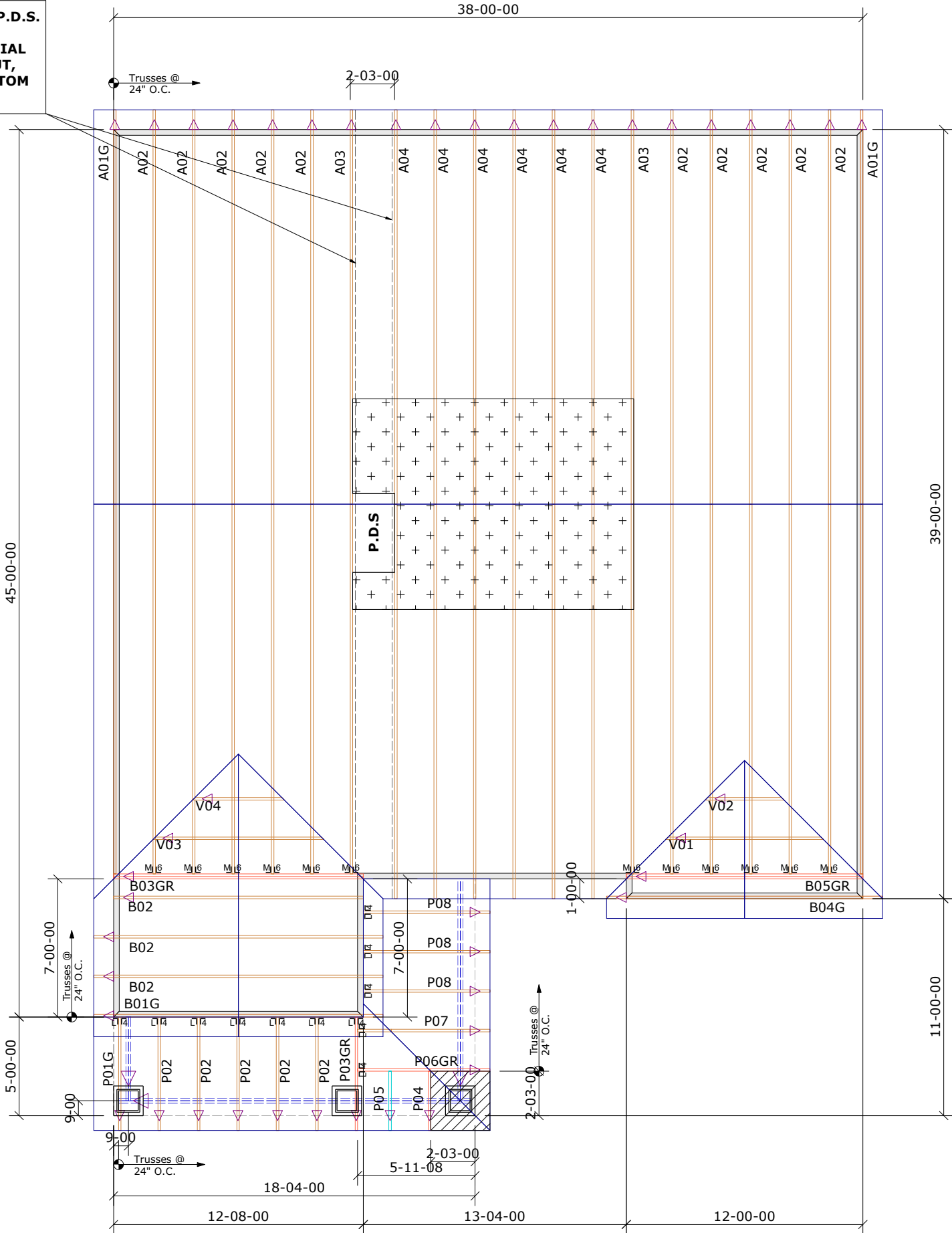


SPACE TRUSSES 2' O.C. UNLESS A WIDE P.D.S. IS GOING TO BE INSTALLED.
IF WIDE P.D.S. IS USED, FOLLOW SPECIAL TRUSS SPACING AS NOTED ON LAYOUT, & ATTACH 2X4 LEDGERS TO TOP & BOTTOM CHORDS W/12d NAILS @ 16" O.C



Builders First Source
23 Red Cedar Way
Apex, NC 27523
Phone: (919) 363-4956
Fax: (919) 387-8565
<http://www.blr.com>

General Notes:
- Per ANSI/TPI 1-2002 all " Truss to Wall" connections are the responsibility of the Building Designer, not the Truss Manufacturer.

- Dimensions are Feet-Inches- Sixteenths.
- Trusses are to be 24" o.c. unless noted otherwise (U.N.O.)
- Trusses are not designed to support brick U.N.O.
- Do not cut or modify trusses without first contacting Builders FirstSource.
- Immediately contact Builders FirstSource if trusses are damaged.

Connection Notes:
- All hangers are to be Simpson or equivalent U.N.O.
- Use Manufacturer's specifications for all hanger connections U.N.O.
- Use 10d x 1 1/2" Nails in hanger connections to single ply roof girder trusses.

Floor Notes:
- Shift truss as required to avoid plumbing traps.
- Installation Contractor and/or Field Supervisor are to verify all dimensions, trap locations, and options prior to installation

Dimension Notes:
- Drawing not to scale. Do not scale dimensions

<u>Hanger List</u>			All Tie Downs H2.5A Unless noted		
12	LUS24	1/4	<u>Special Items List</u>		
12	HTU26	3/8			
			<u>Misc Material</u>		
MATTAMY HOMES					
SHENANDOAH			Elev:	CRAFTSMAN	
BLOOM					
WAKE		NC	Lot:	3	
			<u>Appwright #</u>		
			4682488		
			<u>Code:</u>	IRC 2015	
			<u>Loading:</u>		
			T.C.L.L.	20.0 lb/ft2	
<u>Designed By:</u> MWA			T.C.D.L	10.0 lb/ft2	
<u>Layout:</u> SHENANDOAH			B.C.L.L.	0.0 lb/ft2	
<u>L/O Date:</u> 06/04/2025			B.C.D.L.	10.0 lb/ft2	
<u>Revision History</u>			<u>Wind:</u>		
Rev1:	xx/xx/xx		M.P.H.	115	
Rev2:	xx/xx/xx		Exposure Category		
Rev3:	xx/xx/xx		B		
<u>Pick Ticket:</u>	---		<u>Job No:</u>	---	
<u>Sales No:</u>	---		<u>Acct No:</u>	---	

Hatch Legend	
	Attic Room
	Volume Ceiling
	Stick Framing

MATTAMY homes