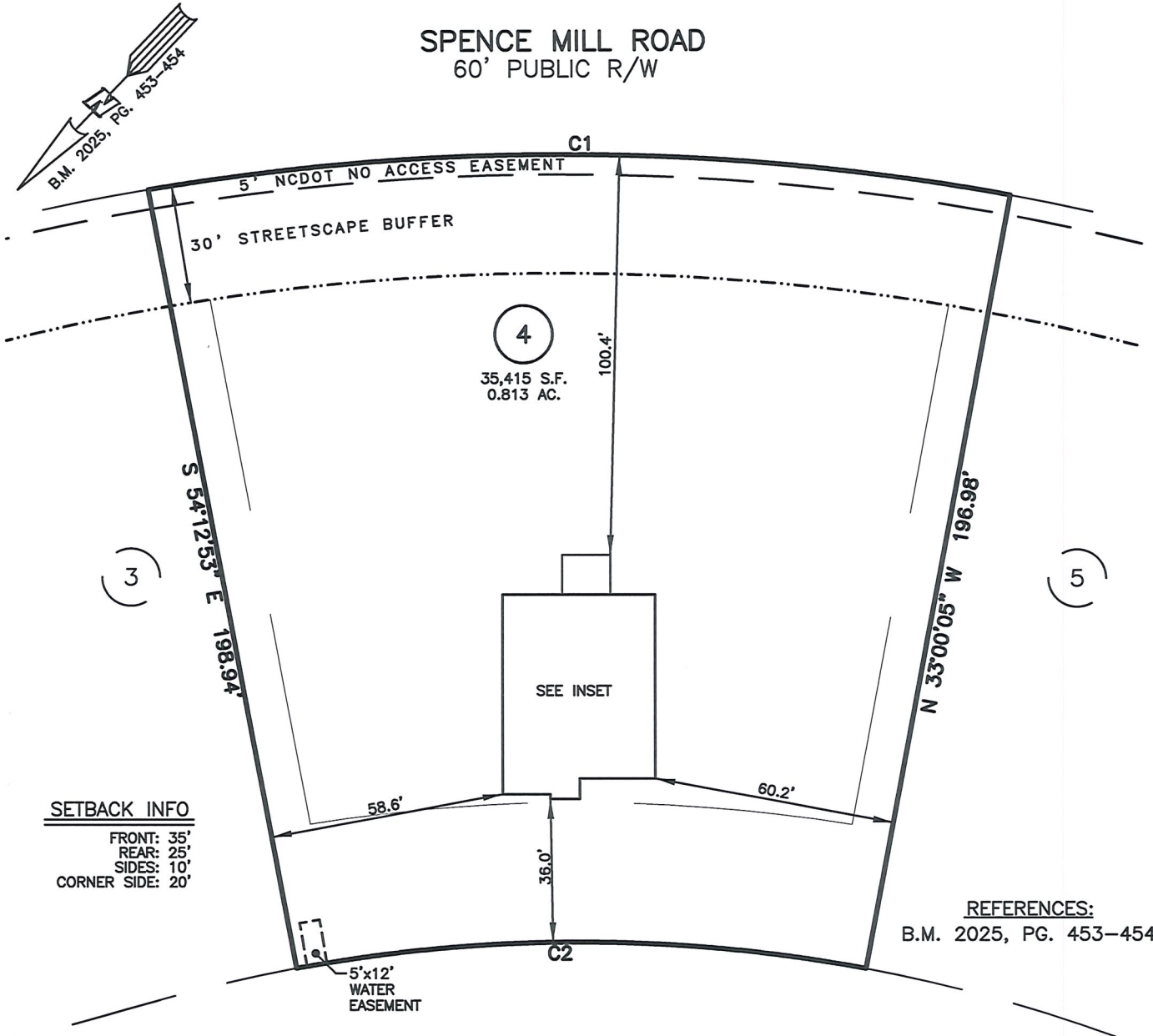


AS-BUILT IMPROVEMENTS FOR
MATTAMY HOMES
199 SCARLET SAGE DRIVE
LOT 4, BLOOM SUBDIVISION-NORTH
HECTORS CREEK TOWNSHIP, HARNETT COUNTY, NORTH CAROLINA

SPENCE MILL ROAD
60' PUBLIC R/W



SETBACK INFO

FRONT: 35'
REAR: 25'
SIDES: 10'
CORNER SIDE: 20'

REFERENCES:

B.M. 2025, PG. 453-454

SCARLET SAGE DRIVE
50' PUBLIC R/W

NUM	RADIUS	ARC	CHORD	CHORD BRG	DELTA
C1	606.62	215.75'	214.61'	S 46°54'16" W 20°22'40"	
C2	385.00'	142.54'	141.73'	N 46°23'31" E 21°12'37"	

LEGEND

△	AIR CONDITIONER	INV.	INVERT
BC	BACK OF CURB	IPS	IRON PIPE SET
BFP	BACK FLOW PREVENTER	IRS	IRON ROD SET
○	CLEANOUT	○	LIGHT POLE
□	CURB INLET	MNS	MAGNETIC NAIL SET
DHS	DRILL HOLE SET	○	MANHOLE SANITARY SEWER
ECM	EXISTING CONCRETE MONUMENT	○	MANHOLE STORM SEWER
EDH	EXISTING DRILL HOLE	OHW	OVERHEAD WIRES
EIS	EXISTING IRON STAKE	PKS	PK NAIL SET
EIP	EXISTING IRON PIPE	PNS	POINT NOT SET
EM	ELECTRIC METER	RRS	RAIL ROAD SPIKE
EPK	EXISTING PK NAIL	○	TELEPHONE PEDESTAL
ES	ELECTRIC STUB	○	TRANSFORMER
FS	FLARED END SECTION	○	CABLE TV PEDESTAL
○	FIRE HYDRANT	○	UTILITY POLE
○	FIBER OPTIC PEDESTAL	○	WATER METER
GM	GAS METER	○	WATER VALVE
GUY	GUY	○	YARD INLET
△	REVISION TRIANGLE	()	FIELD MEASUREMENT

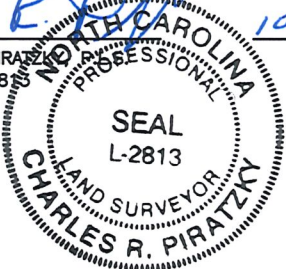
THIS AS-BUILT IS
FOR CODE COMPLIANCE.
NOT FOR SALES OR
CONVEYANCE

WAKE COUNTY, NORTH CAROLINA

I CERTIFY THAT THIS MAP WAS DRAWN UNDER MY
SUPERVISION FROM FIELDWORK DONE UNDER
MY SUPERVISION; THAT THE IMPROVEMENTS LIE
FULLY UPON THE LOT UNLESS OTHERWISE SHOWN
AND THAT THE PROPERTY SHOWN IS AN EXISTING
PARCEL OR PARCELS OF LAND.

CHARLES R. PIRATZKY

L-2813

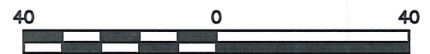
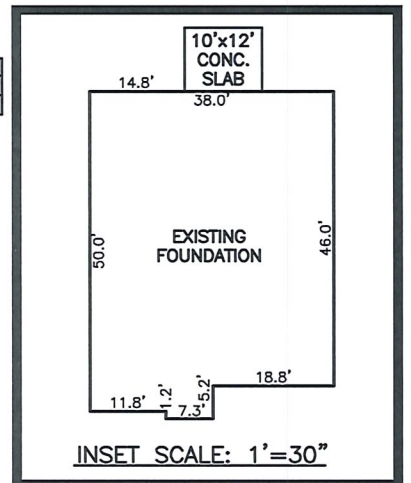


DATE

10-14-25

DATE: OCT. 09, 2025

G:\FieldLoc\BLOOMFDN2-5 CTRL.txt



SCALE: 1" = 40'

NOTES

1. THIS SURVEY SUBJECT TO ANY FACTS THAT MAY BE DISCLOSED BY A FULL AND ACCURATE TITLE SEARCH.
2. THIS MAP MAY NOT BE A CERTIFIED SURVEY AND HAS NOT BEEN REVIEWED BY A LOCAL GOVERNMENT AGENCY FOR COMPLIANCE WITH ANY APPLICABLE LAND DEVELOPMENT REGULATIONS AND HAS NOT BEEN REVIEWED FOR COMPLIANCE WITH RECORDING REQUIREMENTS FOR PLATS.

RWK, PA
ENGINEERING ~ SURVEYING
CORPORATE LICENSE: C-1771
101 W. MAIN ST., SUITE 202
GARNER, NC 27529
PHONE (919) 779-4854
FAX (919) 779-4056

G:\BLOOM\BLM 04\BLOOM 4.DWG