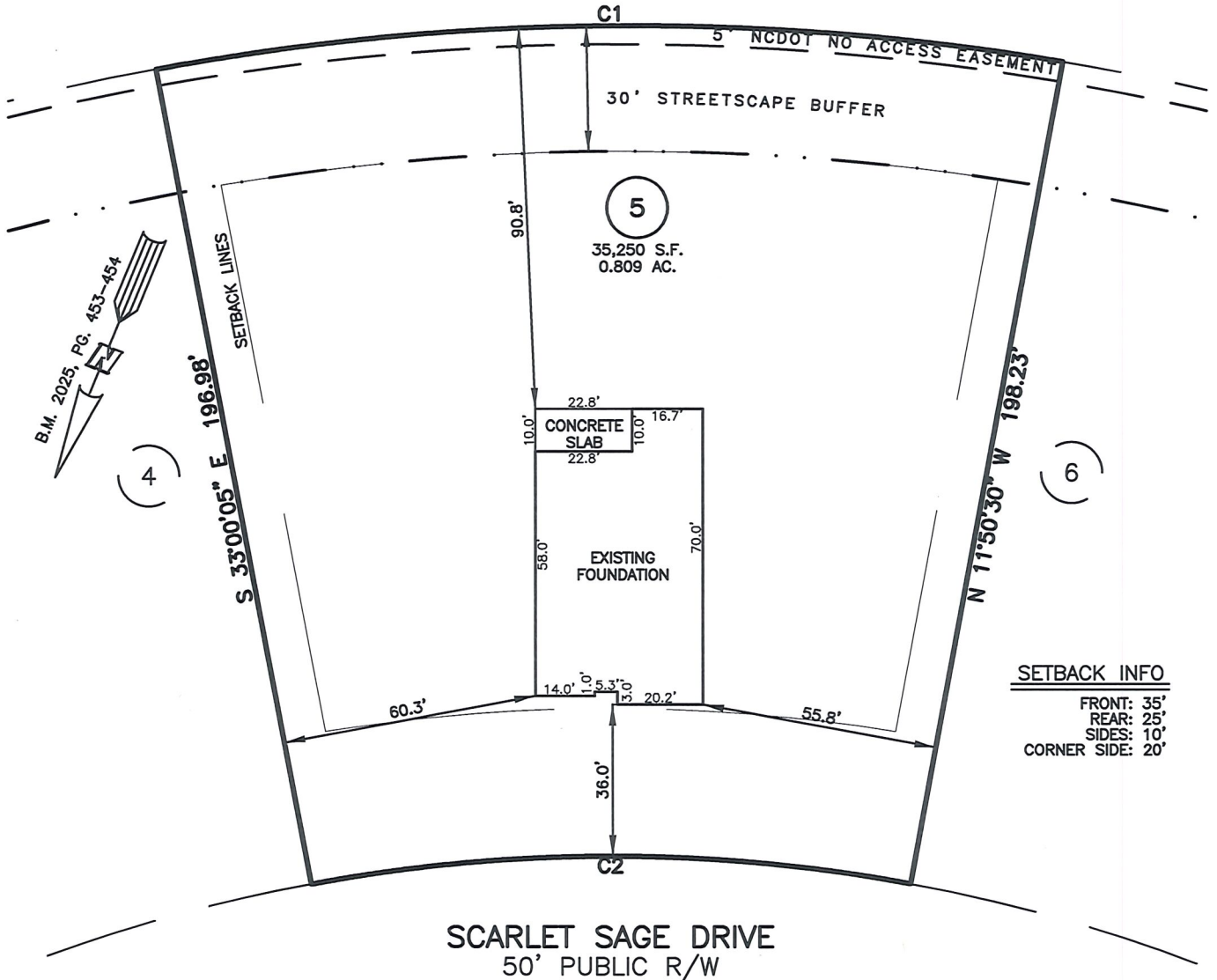


AS-BUILT IMPROVEMENTS FOR
MATTAMY HOMES
223 SCARLET SAGE DRIVE
LOT 5, BLOOM SUBDIVISION-NORTH
HECTORS CREEK TOWNSHIP, HARNETT COUNTY, NORTH CAROLINA

SPENCE MILL ROAD
60' PUBLIC R/W



SETBACK INFO

FRONT: 35'
REAR: 25'
SIDES: 10'
CORNER SIDE: 20'

NUM	RADIUS	ARC	CHORD	CHORD BRG	DELTA
C1	606.62'	215.07'	213.94'	S 67°15'00\"	W 20°18'48\"
C2	385.00'	142.18'	141.38'	N 67°34'42\"	E 21°09'35\"

LEGEND

BC	AIR CONDITIONER	INV.	INVERT
BFP	BACK OF CURB	IPS	IRON PIPE SET
○	BACK FLOW PREVENTER	IRS	IRON ROD SET
□	CLEANOUT	○	LIGHT POLE
ECM	CURB INLET	MNS	MAGNETIC NAIL SET
DHS	DRILL HOLE SET	○	MANHOLE SANITARY SEWER
EDH	EXISTING CONCRETE MONUMENT	○	MANHOLE STORM SEWER
EIS	EXISTING DRILL HOLE	OHW	OVERHEAD WIRES
EIP	EXISTING IRON STAKE	PKS	PK NAIL SET
EM	EXISTING IRON PIPE	PNS	POINT NOT SET
EPK	ELECTRIC METER	RPS	RAIL ROAD SPIKE
ES	EXISTING PK NAIL	○	TELEPHONE PEDESTAL
ES	ELECTRIC STUB	○	TRANSFORMER
FL	FLARED END SECTION	○	CABLE TV PEDESTAL
FM	FIRE HYDRANT	○	UTILITY POLE
FO	FIBER OPTIC PEDESTAL	○	WATER METER
GM	GUY	○	WATER VALVE
△	REVISION TRIANGLE	○	YARD INLET
		○	FIELD MEASUREMENT

WAKE COUNTY, NORTH CAROLINA

I CERTIFY THAT THIS MAP WAS DRAWN UNDER MY SUPERVISION FROM FIELDWORK DONE UNDER MY SUPERVISION; THAT THE IMPROVEMENTS LIE FULLY UPON THE LOT UNLESS OTHERWISE SHOWN AND THAT THE PROPERTY SHOWN IS AN EXISTING PARCEL OR PARCELS OF LAND.

CHARLES R. PIRATZKY
L-2813



DATE

THIS AS-BUILT IS
FOR CODE COMPLIANCE.
NOT FOR SALES OR
CONVEYANCE

DATE: OCT. 09, 2025

Q:\FieldLoc\BLOOMFDN2-5_CTRL.txt

REFERENCES:

B.M. 2025, PG. 453-454



SCALE: 1" = 40'

NOTES

- THIS SURVEY SUBJECT TO ANY FACTS THAT MAY BE DISCLOSED BY A FULL AND ACCURATE TITLE SEARCH.
- THIS MAP MAY NOT BE A CERTIFIED SURVEY AND HAS NOT BEEN REVIEWED BY A LOCAL GOVERNMENT AGENCY FOR COMPLIANCE WITH ANY APPLICABLE LAND DEVELOPMENT REGULATIONS AND HAS NOT BEEN REVIEWED FOR COMPLIANCE WITH RECORDING REQUIREMENTS FOR PLATS.

RWK, PA
ENGINEERING ~ SURVEYING
CORPORATE LICENSE: C-1771
101 W. MAIN ST., SUITE 202
GARNER, NC 27529
PHONE (919) 779-4854
FAX (919) 779-4056

Q:\BLOOM\BLM 05\BLOOM 5.DWG