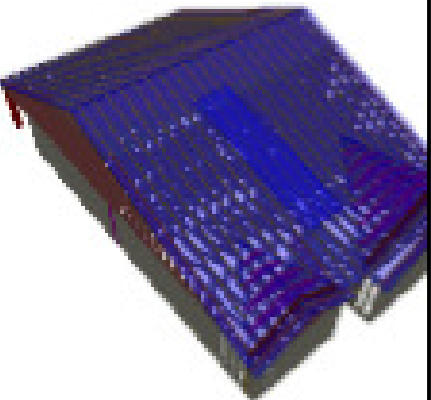


Builders First Source
23 Red Cedar Way
Apex, NC 27523
Phone: (919) 363-4956
Fax: (919) 387-8565
<https://www.bldr.com>

- General Notes:**
- Per ANSI/TPI 1-2002 all " Truss to Wall" connections are the responsibility of the Building Designer, not the Truss Manufacturer.
 - Dimensions are Feet-Inches- Sixteenths.
 - Trusses are to be 24" o.c. unless noted otherwise (U.N.O.)
 - Trusses are not designed to support brick U.N.O.
 - Do not cut or modify trusses without first contacting Builders FirstSource.
 - Immediately contact Builders FirstSource if trusses are damaged.
- Connection Notes:**
- All hangers are to be Simpson or equivalent U.N.O.
 - Use Manufacturer's specifications for all hanger connections U.N.O.
 - Use 10d x 1 1/2" Nails in hanger connections to single ply roof girder trusses.
- Floor notes:**
- Shift truss as required to avoid plumbing traps.
 - Installation Contractor and/or Field Supervisor are to verify all dimensions, trap locations, and options prior to installation
- Dimension Notes:**
- Drawing not to scale. Do not scale dimensions

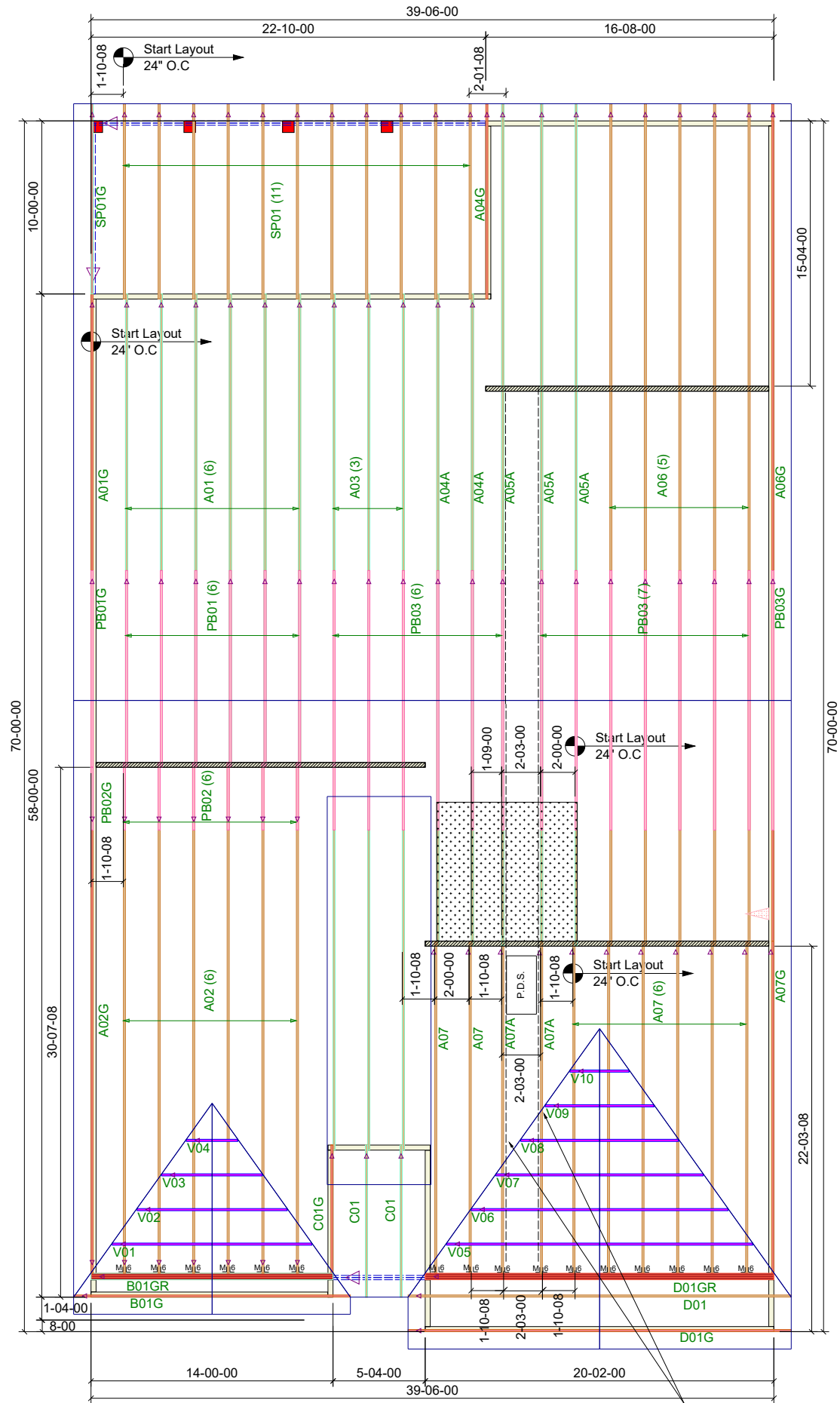
△◁▷▽ LEFT END OF TRUSS AS SHOWN ON TRUSS
DETAIL DRAWINGS ARE INDICATED BY TRIANGLE ICONS.



HANGER LIST		ALL TIE DOWNS H2.5A UNLESS NOTED
16	HTU26 M 6	SPECIAL ITEMS LIST
		MISC MATERIAL

MATTAMY HOMES		
GLADES	ELEV:	FARMHOUSE
5 BLOOM		
County	NC	LOT: ---
<ul style="list-style-type: none">• [OPTION 1]• [OPTION 2]• [OPTION 3]	APPWRIGHT #	
	4682627	
	CODE:	IRC 2015
	WIND:	
M.P.H.		120 MPH
DESIGNED BY:	NJH	HATCH LEGEND
LAYOUT:	---	ATTIC ROOM
L/O DATE:	6/5/2025	VOLUME CEILING
		STICK FRAMING

Summation of limited excerpts of the Code, ANSI/TPI 1-2014, and BCSI, and associated commentary, are provided within the truss submittal package in the Builders First-Source Component Truss Responsibility and Liability Disclosure. These critical excerpts include, among other elements, critical safety information as well as specific Scope-of-Work assignments (and limitations of the same) for the Owner, Contractor, Building Designer, Truss Designer, and Truss Manufacturer. It is essential that ALL parties to the design and use of the trusses review and become familiar with the information provided in the Builders FirstSource Component Truss Responsibility and Liability Disclosure, as well as the referenced sources, prior to performing work on the associated project.



SPACE TRUSSES 2' O.C. UNLESS A WIDE P.D.S. IS GOING TO BE
INSTALLED. IF WIDE P.D.S. IS USED, FOLLOW SPECIAL TRUSS
SPACING AS NOTED ON LAYOUT, & ATTACH 2X4 LEDGERS TO
TOP & BOTTOM CHORDS W/12d NAILS @ 16" O.C.