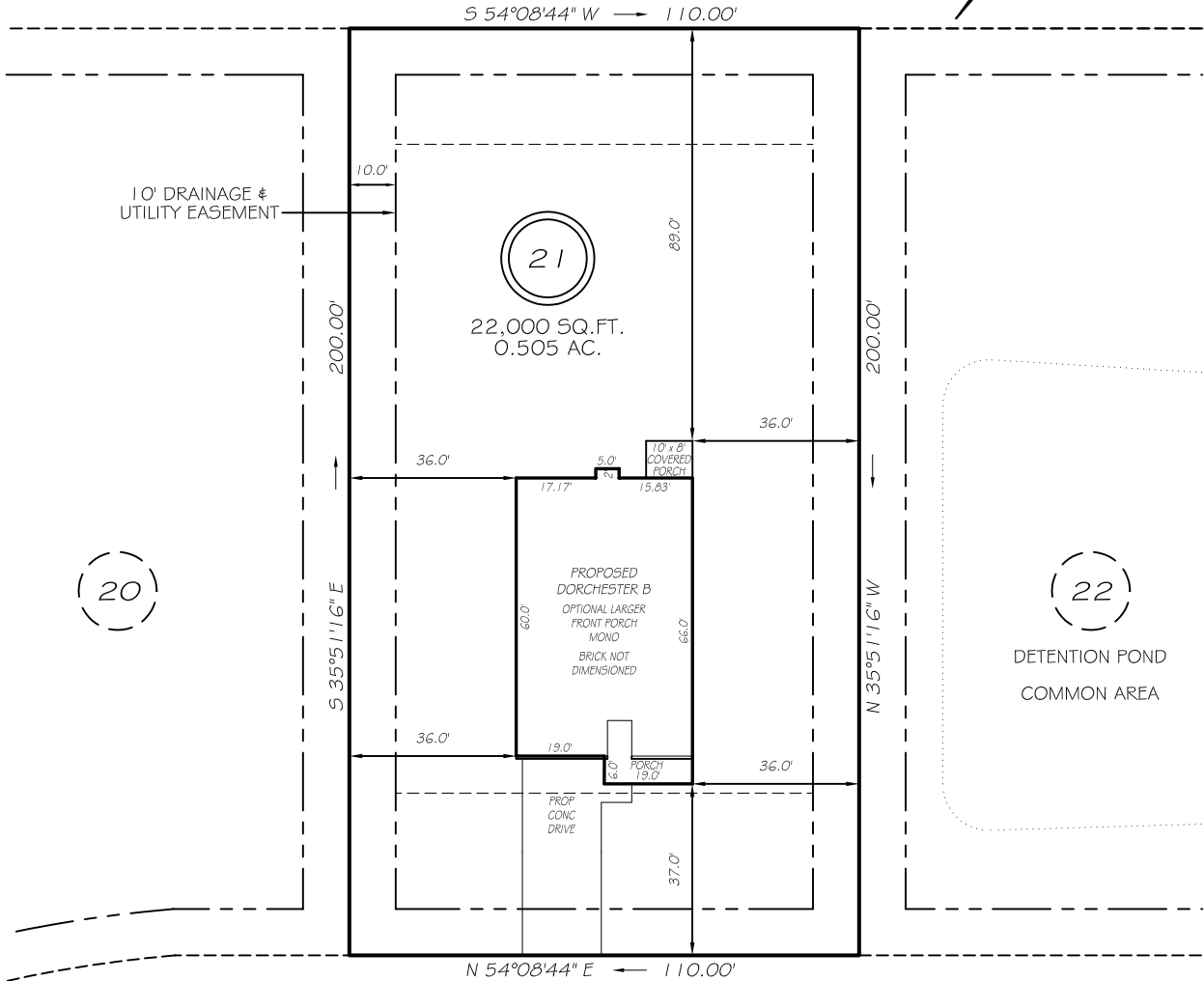


I, MICHAEL P. GRIFFIN, certify that under my direction and supervision this map was drawn from an actual field survey; that the error of closure of the survey as calculated by coordinates is 1: 10,000+ ; that the area shown hereon was calculated by coordinates. Dashed lines shown hereon were not surveyed.

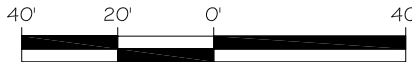
Witness my hand and seal this day of MONTH 2025.

N/F
LOUS CHAPEL CHURCH
DB 857 PG 927
PIN 0513-55-0549



IMPERVIOUS AREAS

HOUSE	2484 SQ. FT.
DRIVE & WALKS	761 SQ. FT.
PATIO	0 SQ. FT.
TOTAL	3245 SQ. FT.



GRAPHIC SCALE
1"=40'

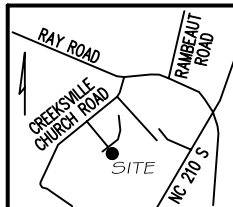
SETBACKS

FRONT	35'
REAR	25'
SIDE	10'
CORNER SIDE	20'

LEGEND

PRELIMINARY
NOT FOR RECORDATION,
SALES OR CONVEYANCE

EIP	EXISTING IRON PIPE	FES	FLARED END SECTION
RBS	REBAR SET	WM	WATER METER
R/W	RIGHT OF WAY	CO	CLEAN OUT
N/F	NOW OR FORMERLY	FH	FIRE HYDRANT
EIS	EXISTING IRON STAKE	CB	CATCH BASIN



GRIFFIN LAND SURVEYING, INC.

P. O. BOX 148
FUQUAY-VARINA, NC 27526
(919) - 567 - 1963

FIRM LIC.# C-1345

PLOT PLAN
FOR

A & G RESIDENTIAL

JAYLIN OAKS

LOT 21

119 JAYLIN OAKS DRIVE

SPRING LAKE, N.C.

HARNETT COUNTY ANDERSON CREEK TOWNSHIP

DRAWN BY KDF

DATE 8/22/25

CHECKED BY MPG

SCALE 1" = 40'