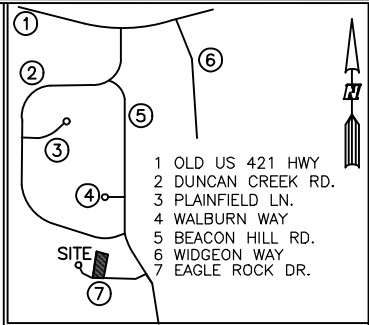


SITE PLAN FOR
NEW HOME INC.
292 BLUESTONE DRIVE
LOT 80, DUNCAN'S CREEK PHASE 3
UPPER LITTLE CREEK TOWNSHIP, HARNETT COUNTY, NORTH CAROLINA



VICINITY MAP NO SCALE

B.M. 2025, PGS. 400-401

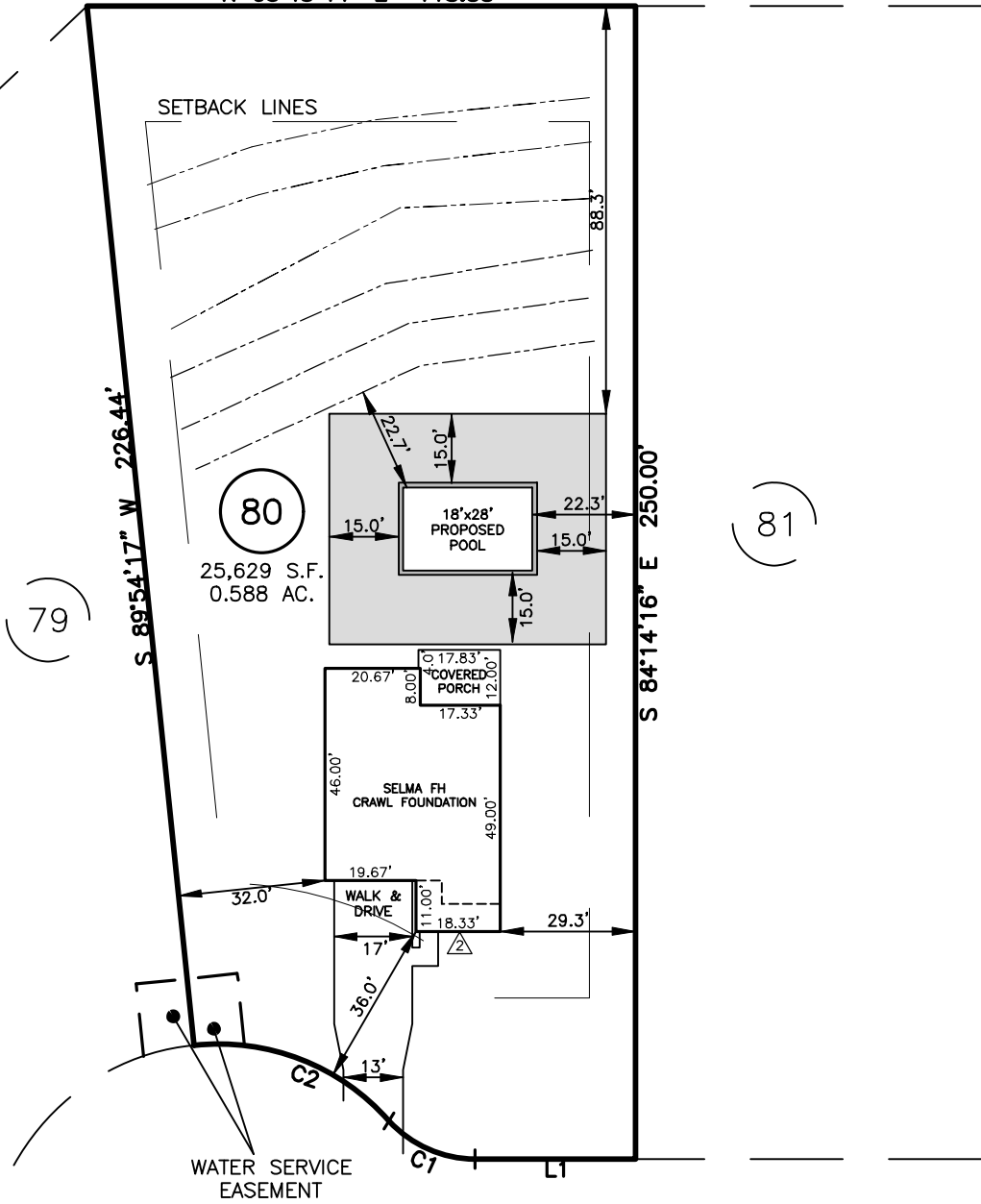
OPEN SPACE

N 05°45'44" E 118.88'

SETBACK LINES

LEGEND

- AIR CONDITIONER
- BACK OF CURB
- BACK FLOW PREVENTER
- CLEANOUT
- CURB INLET
- DHS DRILL HOLE SET
- ECM EXISTING CONCRETE MONUMENT
- EDH EXISTING DRILL HOLE
- EIS EXISTING IRON STAKE
- EIP EXISTING IRON PIPE
- EM ELECTRIC METER
- EPK EXISTING PK NAIL
- ES ELECTRIC STUB
- FLARED END SECTION
- FIRE HYDRANT
- FIBER OPTIC PEDESTAL
- GAS METER
- GUY
- INVERT
- IPS IRON PIPE SET
- IRS IRON ROD SET
- LIGHT POLE
- MNS MAGNETIC NAIL SET
- MANHOLE SANITARY SEWER
- MANHOLE STORM SEWER
- OVERHEAD WIRES
- PKS PK NAIL SET
- PNS POINT NOT SET
- RRS RAIL ROAD SPIKE
- TELEPHONE PEDESTAL
- TRANSFORMER
- CABLE TV PEDESTAL
- UTILITY POLE
- WATER METER
- WATER VALVE
- YARD INLET
- FIELD MEASUREMENT
- REVISION TRIANGLE
- PROPOSED DECK
- PROPOSED POOL COPING
- INITIAL DRAINFIELD
- REPAIR DRAINFIELD



BLUESTONE DRIVE
50' PUBLIC R/W

SETBACK INFO

FRONT: 35'
REAR: 25'
SIDES: 10'
CORNER SIDE: 20'

LINE	BEARING	DISTANCE
L1	S 05°45'44" W	34.76'

NUM	RADIUS	ARC	CHORD	CHORD BRG	DELTA
C1	25.00'	21.03'	20.41'	S 29°51'25" W	48°11'23"
C2	50.00'	47.16'	45.44'	S 26°55'42" W	54°02'49"

IMPERVIOUS SURFACES	
HOUSE	1,820 S.F.
WALK & DRIVE	820 S.F.
PORCH	210 S.F.
TOTAL	2,850 S.F.
IMPERVIOUS SURFACES	
PROPOSED POOL COPING	100 S.F.
PROPOSED POOL DECK	2,400 S.F.
SUBTOTAL	2,500 S.F.
TOTAL	5,280 S.F.

REFERENCES:

B.M. 2025, PGS. 400-401

40 0 40
SCALE: 1" = 40'

NOTES

1. DRAINFIELD LINES ARE SHOWN BASED ON WORK BY ADAMS SOIL CONSULTING DATED 7-1-2025

THIS IS A SITE PLAN AS DEFINED BY G.S. 160D-102 AND IS NOT INTENDED TO BE ATTACHED TO ANY INSTRUMENT RECORDED IN THE REGISTER OF DEEDS OFFICE

FLIPPED HOUSE

SITE PLAN
NOT FOR RECORDATION,
CONVEYANCE OR SALES

REV CODE: 1.FLIP, 2.PLAN, 3.ROTATE, 4.MOVE, 5.SS
6.SEVERAL OF ABOVE, 7.LAND FEATURE, 8. OTHER

REV2: AUG. 20, 2025(1)
REV1: JULY 23, 2025(2)
DATE: JULY 18, 2025

F.B. _____

RWK, PA
ENGINEERING ~ SURVEYING
CORPORATE LICENSE: C-1771
101 W. MAIN ST., SUITE 202
GARNER, NC 27529
PHONE (919) 779-4854
FAX (919) 779-4056

O:\DUNCAN'S CREEK\DNCK80\DUNCAN_CREEK80.DWG