

PRELIMINARY PLOT PLAN FOR

MUNGO HOMES

LOT 91, CAMBRIDGE SUBDIVISION

BAINBRIDGE COURT

REF: P.B. 2025, PG. 447

NEILL’S CREEK TOWNSHIP

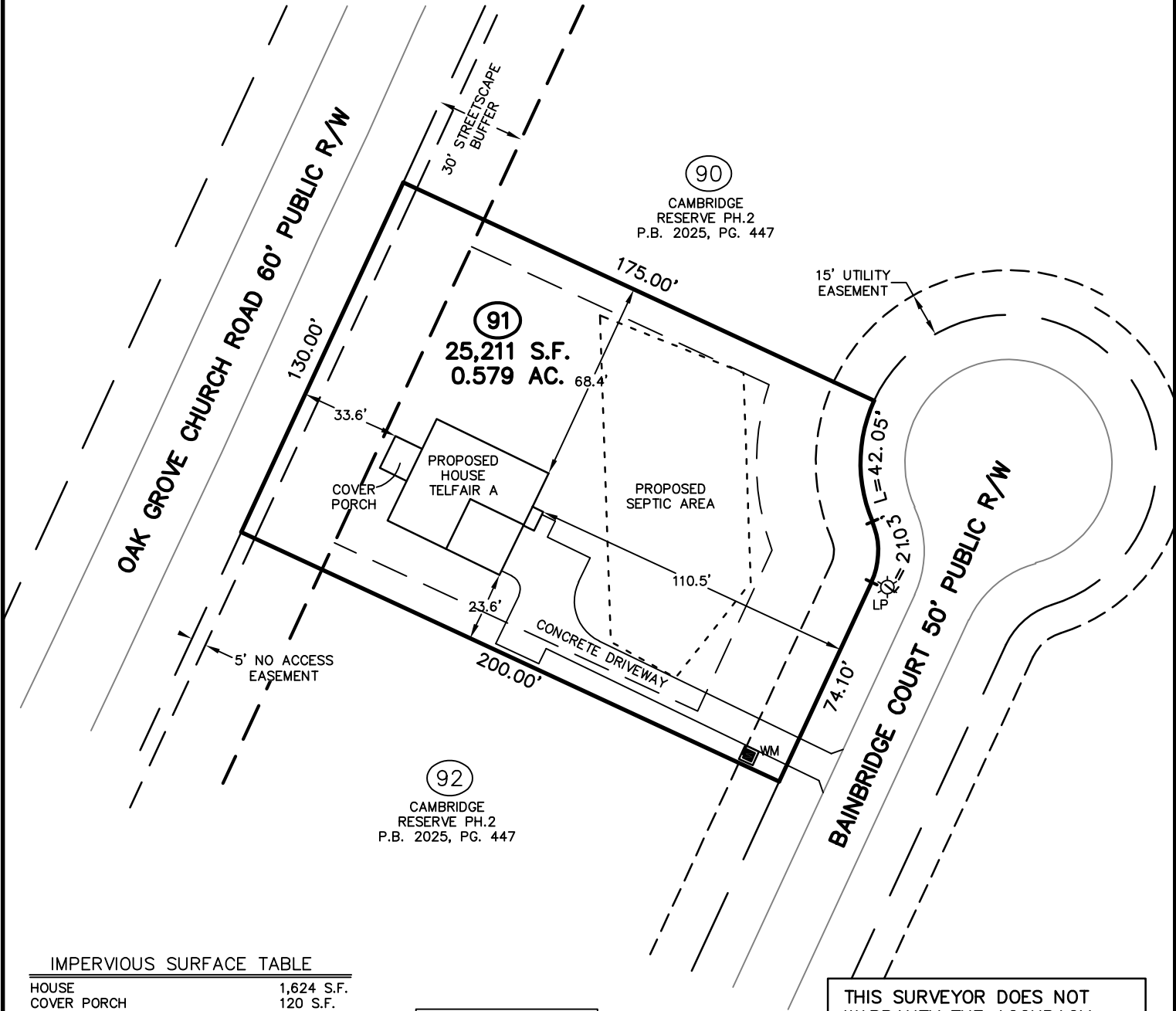
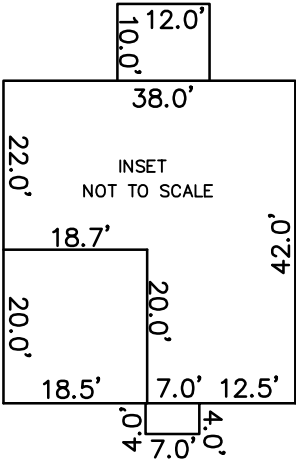
HARNETT COUNTY, NORTH CAROLINA

AUGUST 5, 2025

ZONED RA-30



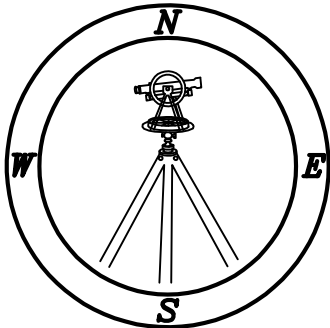
SCALE 1"=50'



IMPERVIOUS SURFACE TABLE	
HOUSE	1,624 S.F.
COVER PORCH	120 S.F.
DRIVEWAY/SIDEWALK	1,775 S.F.
MISC/UTILITIES	9 S.F.
TOTAL IMPERVIOUS AREA	3,528 S.F.
TOTAL LOT AREA	25,211 S.F.
PERCENTAGE OF IMPERVIOUS AREA	13.99 %

TOTAL CONCRETE & LANDSCAPE	
CONCRETE	1,925 S.F.
LANDSCAPE	21,557 S.F.

THIS SURVEYOR DOES NOT WARRANTY THE ACCURACY OF ARCHITECTURAL DIMENSIONS. THEY ARE TO BE VERIFIED BY THE CONTRACTOR.



CMP

Professional Land Surveyors
C-1525

333 S. White Street
Post Office Box 1253
Wake Forest, N.C. 27588
(919)556-3148

NOTES:
-THIS PLAN DOES NOT REFLECT AN ACTUAL SURVEY. IT IS A PRELIMINARY PLAN AND SHOULD BE USED FOR ITS INTENDED PURPOSE ONLY.
-NOT FOR RECORDATION, CONVEYANCES, OR SALES.