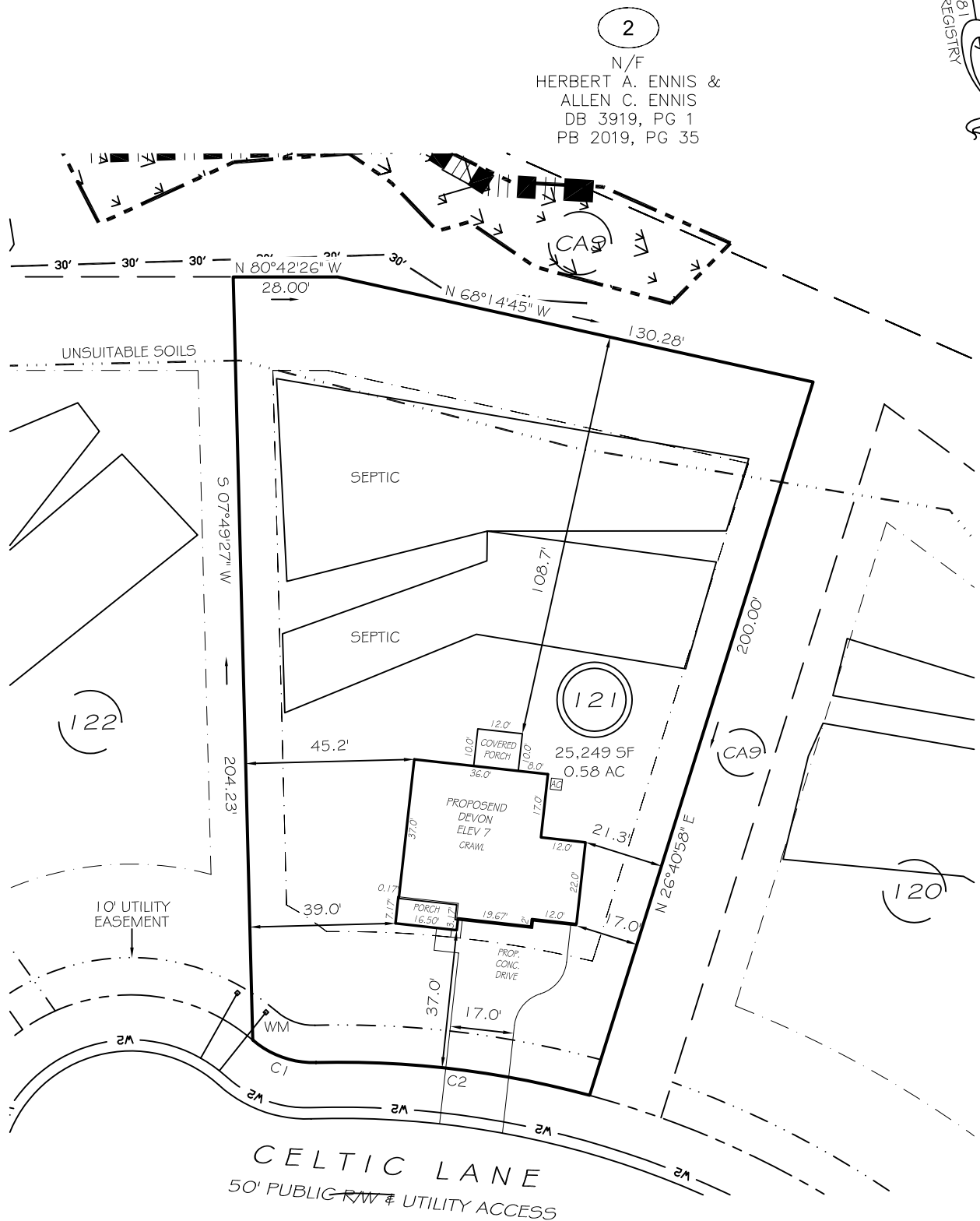


I, MICHAEL P. GRIFFIN, certify that under my direction and supervision this map was drawn from an actual field survey; that the error of closure of the survey as calculated by coordinates is 1: 10,000+; that the area shown hereon was calculated by coordinates. Dashed lines shown hereon were not surveyed.

Witness my hand and seal this day of MONTH 2025.

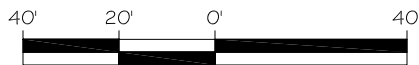
BK 2023 PG 381  
HARNETT CO. REGISTRY



ZONING: RA-30  
SETBACKS

FRONT 35'  
REAR 25'  
SIDE 10'  
CORNER SIDE 20'

C1 R=25.00 L=18.40' N61°06'36"W 17.99'  
C2 R=255.00 L=74.03' S73°52'54"E 73.77'

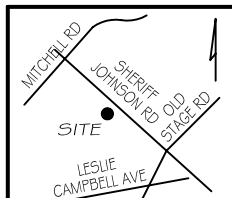


GRAPHIC SCALE  
1"=40'

### LEGEND

**P R E L I M I N A R Y**  
NOT FOR RECORDATION,  
SALES OR CONVEYANCE

EIP	EXISTING IRON PIPE	FES	FLARED END SECTION
IPS	IRON PIPE SET	WM	WATER METER
R/W	RIGHT OF WAY	CO	CLEAN OUT
N/F	NOW OR FORMERLY	PP	POWER POLE
EIS	EXISTING IRON STAKE	CB	CATCH BASIN



GRIFFIN LAND SURVEYING, INC.

P. O. BOX 148  
FUQUAY-VARINA, NC 27526  
(919) - 567-1963

FIRM LIC.# C-1345

PLOT PLAN  
FOR

**DRB HOMES**

BLAKE POND SUBDIVISION

LOT 121

108 CELTIC LANE

LILLINGTON, N.C.

HARNETT COUNTY NEILL'S CREEK & GROVE TOWNSHIP

DRAWN BY **KDF**

DATE **7/21/25**

CHECKED BY **MPG**

SCALE **1" = 40'**