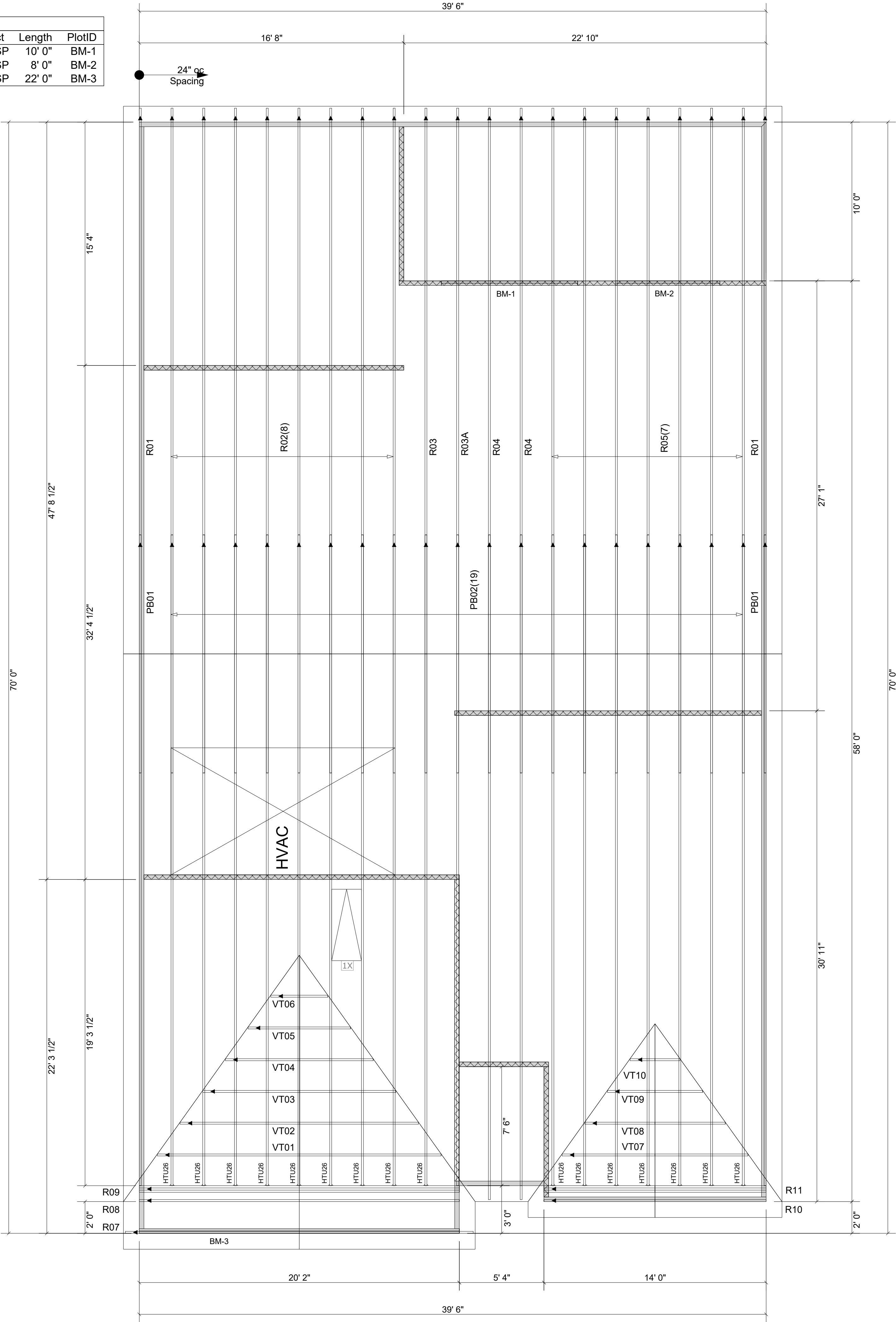


Products					
Net Qty	Plies		Product	Length	PlotID
2	2	1-3/4" x 9-1/2"	VERSA-LAM® 2.0 3100 SP	10' 0"	BM-1
2	2	1-3/4" x 9-1/2"	VERSA-LAM® 2.0 3100 SP	8' 0"	BM-2
2	2	1-3/4" x 11-7/8"	VERSA-LAM® 2.0 3100 SP	22' 0"	BM-3

Truss Connector Total List		
Qty	Product	Manuf
16	HTU26	Simpson

Extreme care must be taken to not set any of these trusses backwards.



WARNING! Long span trusses, 60' or greater in length, require extreme care and experience for proper and safe handling and installation. For general handling and installation guidance, see the "Guide to Good Practice for Handling, Installing, Restraining & Bracing of Metal Plate Connected Wood Trusses ("BCSI")", JOINTLY PRODUCED BY SBCA and TPI. For project specific guidance, consult with a registered design professional. ATLANTIC assumes no responsibility for the handling, installation or bracing of trusses.

FOR PERMIT

Client: MATTAMY HOMES-RALEIGH

Job: LOT 135 PROVIDENCE CREEK

Plan Information: GLADES-FC

NOT TO SCALE

Drawn By: MBB

Date: / /

Job #: 25-6339-R01

Sales Rep: KYLE GIBSON

Phone:

REVISIONS:



Moncks Corner/Easley, SC (800) 475-3999
Sparta, NC (336) 372-2226

▲ = LEFT END OF TRUSS

ROOF