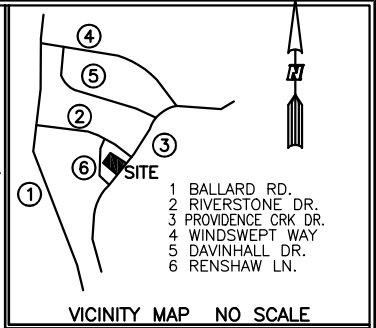
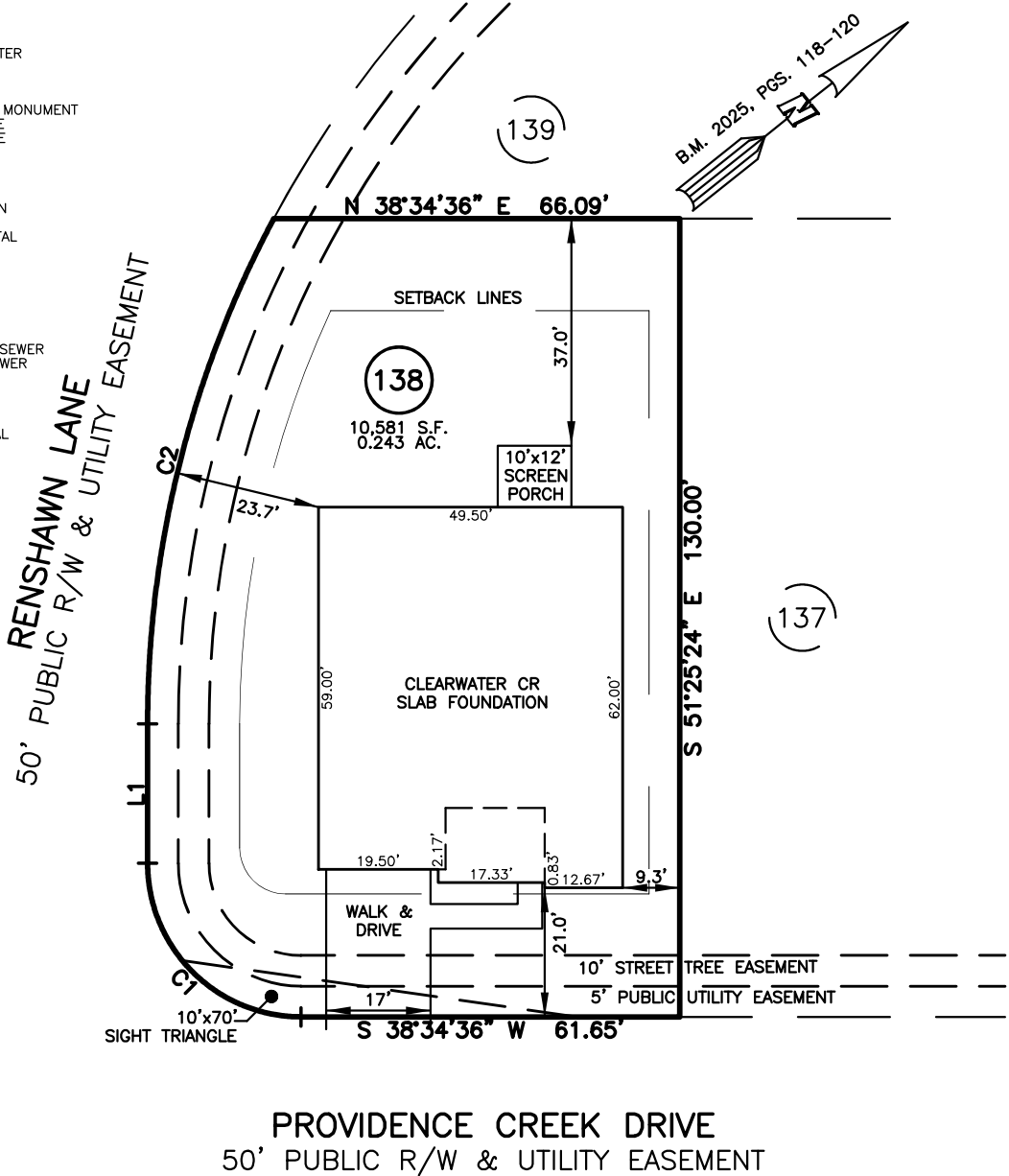


SITE PLAN FOR  
**MATTAMY HOMES**  
398 PROVIDENCE CREEK DRIVE  
LOT 138, PROVIDENCE CREEK PHASE 3  
HECTORS CREEK AND BLACK RIVER TOWNSHIP, HARNETT COUNTY, NORTH CAROLINA



**LEGEND**

- AIR CONDITIONER
- BACK OF CURB
- BACK FLOW PREVENTER
- CLEANOUT
- CURB INLET
- DRILL HOLE SET
- EXISTING CONCRETE MONUMENT
- EXISTING DRILL HOLE
- EXISTING IRON STAKE
- EXISTING IRON PIPE
- ELECTRIC METER
- EXISTING PK NAIL
- ELECTRIC STUB
- FLARED END SECTION
- FIRE HYDRANT
- FIBER OPTIC PEDESTAL
- GAS METER
- GUY
- INVERT
- IRON PIPE SET
- IRON ROD SET
- LIGHT POLE
- MAGNETIC NAIL SET
- MANHOLE SANITARY SEWER
- MANHOLE STORM SEWER
- OVERHEAD WIRES
- PK NAIL SET
- POINT NOT SET
- RAIL ROAD SPIKE
- TELEPHONE PEDESTAL
- TRANSFORMER
- CABLE TV PEDESTAL
- UTILITY POLE
- WATER METER
- WATER VALVE
- YARD INLET
- FIELD MEASUREMENT



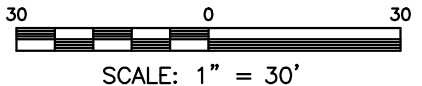
LINE	BEARING	DISTANCE
L1	S 51°25'24" E	22.71'

NUM	RADIUS	ARC	DELTA	CHORD BRG	CHORD
C1	25.00'	39.27'	90°00'00"	N 83°34'36" E	35.36'
C2	175.00'	85.68'	28°03'01"	S 37°23'54" E	84.82'

SETBACK INFO	
FRONT:	20'
REAR:	15'
SIDES:	5'
CORNER SIDE:	15'

IMPERVIOUS SURFACES	S.F.
HOUSE	3,000
WALK & DRIVE	500
SCREEN PORCH	120
TOTAL	3,620

REFERENCES:  
B.M. 2025, PGS. 118-120



THIS IS A SITE PLAN AS DEFINED BY G.S. 160D-102 AND IS NOT INTENDED TO BE ATTACHED TO ANY INSTRUMENT RECORDED IN THE REGISTER OF DEEDS OFFICE

**SITE PLAN**  
NOT FOR RECORDATION,  
CONVEYANCE OR SALES

REV CODE: 1.FLIP, 2.PLAN, 3.ROTATE, 4.MOVE, 5.SS  
6.SEVERAL OF ABOVE, 7.LAND FEATURE, 8. OTHER

DATE: JULY 14, 2025

F.B. \_\_\_\_\_

**RWK, PA**  
ENGINEERING ~ SURVEYING  
CORPORATE LICENSE: C-1771  
101 W. MAIN ST., SUITE 202  
GARNER, NC 27529  
PHONE (919) 779-4854  
FAX (919) 779-4056

O:\Providence\_Creek\PC138\PC138.dwg