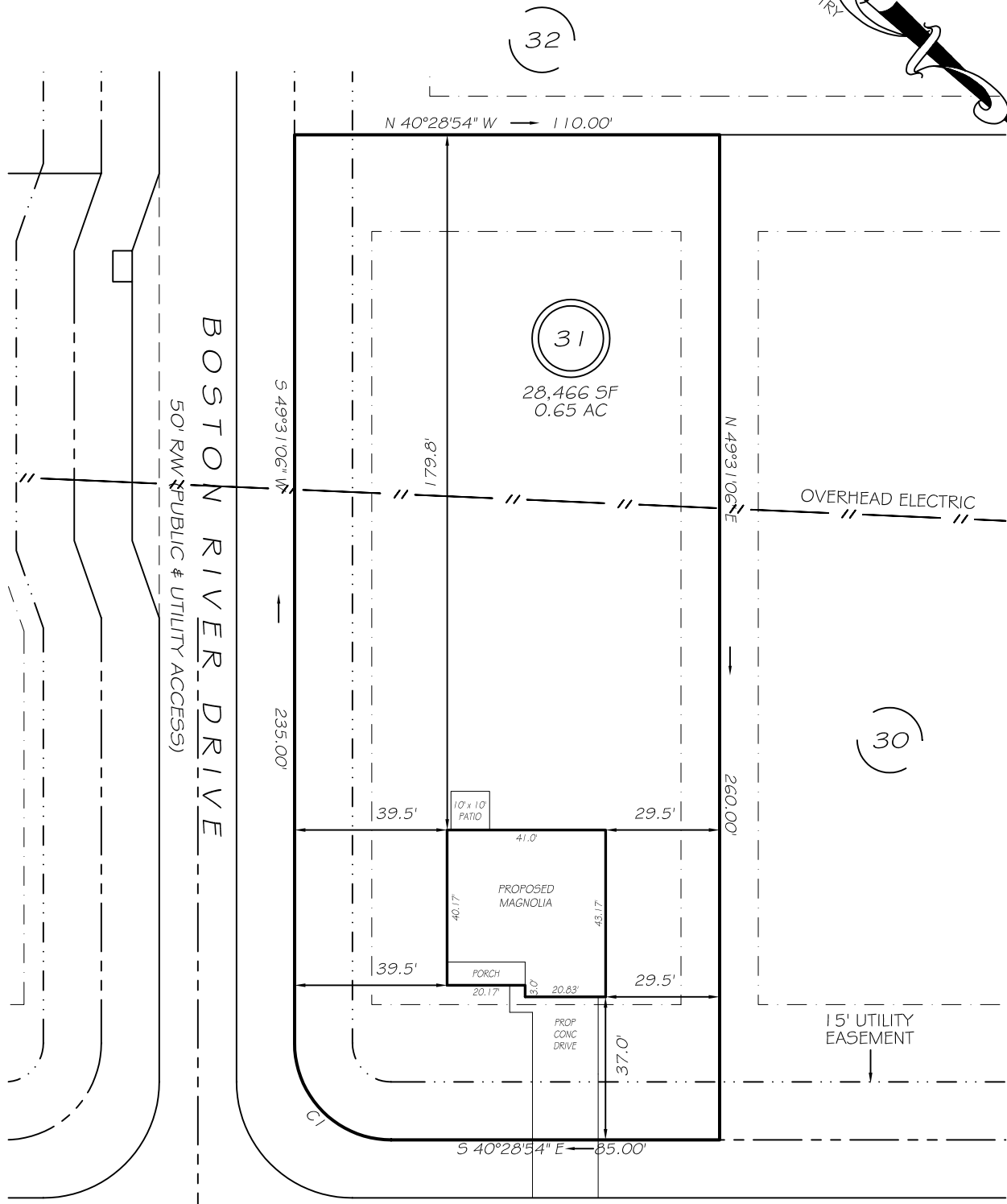


I, MICHAEL P. GRIFFIN, certify that under my direction and supervision this map was drawn from an actual field survey; that the error of closure of the survey as calculated by coordinates is 1: 10,000+; that the area shown hereon was calculated by coordinates. Dashed lines shown hereon were not surveyed.

Witness my hand and seal this day of MONTH 2025.

BK 2025 PG 23A
WAKE CO. REGISTRY



REVISION: NEW PLANS 9/8/25

IMPERVIOUS AREAS

HOUSE	1709 SQ. FT.
DRIVE & WALKS	665 SQ. FT.
PATIO	100 SQ. FT.
TOTAL	2474 SQ. FT.
ALLOWED	5767 SQ. FT.

CI R=25.00' L=39.27' S04°31'06"W 35.36'

BAXLEY DRIVE
50' R/W (PUBLIC & UTILITY ACCESS)



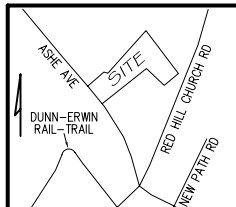
GRAPHIC SCALE
1"=40'

SETBACKS

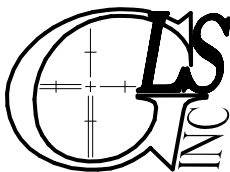
FRONT	35'
REAR	25'
SIDE	10'
CORNER SIDE	20'

LEGEND

EIP	EXISTING IRON PIPE	FES	FLARED END SECTION
RBS	REBAR SET	WM	WATER METER
R/W	RIGHT OF WAY	CO	CLEAN OUT
N/F	NOW OR FORMERLY	FH	FIRE HYDRANT
EIS	EXISTING IRON STAKE	CB	CATCH BASIN



P R E L I M I N A R Y
NOT FOR RECORDATION,
SALES OR CONVEYANCE



GRIFFIN LAND SURVEYING, INC.

P. O. BOX 148
FUQUAY-VARINA, NC 27526
(919) - 567 - 1963

FIRM LIC.# C-1345

PLOT PLAN
FOR
BEN STOUT
CONSTRUCTION
ILA'S WAY

LOT 31
BAXLEY DRIVE
ERWIN, N.C.

HARNETT COUNTY AVERASBORO TOWNSHIP

DRAWN BY **KDF**

DATE **4/14/25**

CHECKED BY **MPG**

SCALE **1" = 40'**