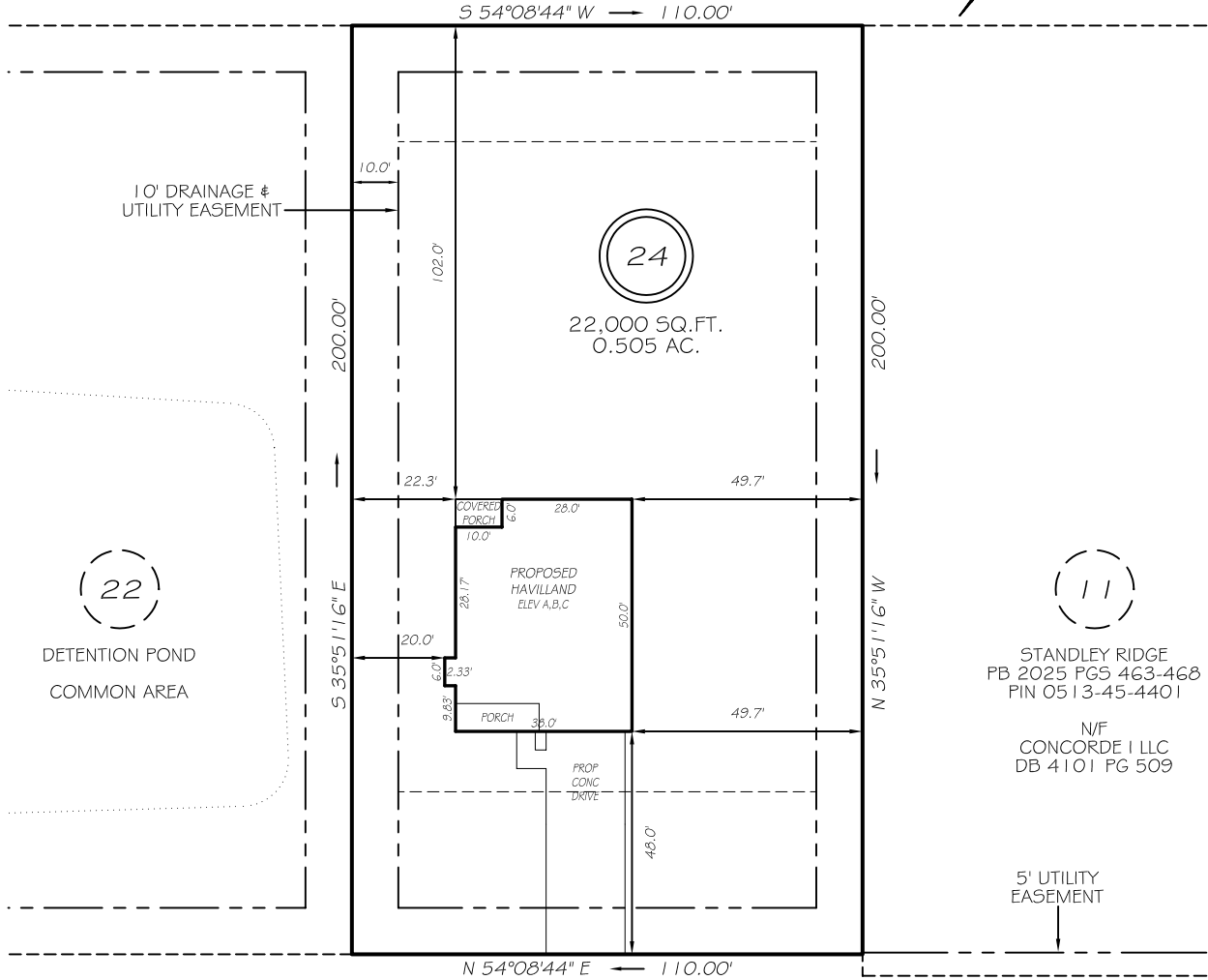


I, MICHAEL P. GRIFFIN, certify that under my direction and supervision this map was drawn from an actual field survey; that the error of closure of the survey as calculated by coordinates is 1: 10,000+; that the area shown hereon was calculated by coordinates. Dashed lines shown hereon were not surveyed.

Witness my hand and seal this day of MONTH 2025.

N/F
LOUISE MCLAUGHLIN
DB 302 PG 484
PIN 0513-44-6766

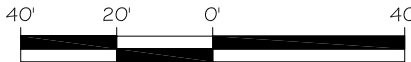


JAYLIN OAKS DRIVE
60' PUBLIC ROW

REVISION MOVE BACK 8/28/25
REVISION MOVE RIGHT 8/27/25

IMPERVIOUS AREAS

HOUSE	1914 SQ. FT.
DRIVE & WALKS	857 SQ. FT.
PATIO	0 SQ. FT.
TOTAL	2771 SQ. FT.



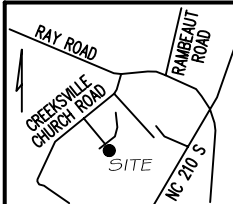
GRAPHIC SCALE
1"=40'

SETBACKS

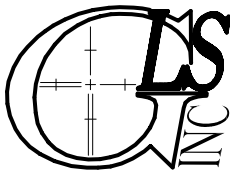
FRONT	35'
REAR	25'
SIDE	10'
CORNER SIDE	20'

LEGEND

EIP	EXISTING IRON PIPE	FES	FLARED END SECTION
RBS	REBAR SET	WM	WATER METER
R/W	RIGHT OF WAY	CO	CLEAN OUT
N/F	NOW OR FORMERLY	FH	FIRE HYDRANT
EIS	EXISTING IRON STAKE	CB	CATCH BASIN



PRELIMINARY
NOT FOR RECORDATION,
SALES OR CONVEYANCE



GRIFFIN LAND SURVEYING, INC.

P. O. BOX 148
FUQUAY-VARINA, NC 27526
(919) - 567 - 1963

FIRM LIC.# C-1345

PLOT PLAN
FOR

A & G RESIDENTIAL

JAYLIN OAKS

LOT 24

175 JAYLIN OAKS DRIVE

SPRING LAKE, N.C.

HARNETT COUNTY ANDERSON CREEK TOWNSHIP

DRAWN BY KDF

DATE 8/22/25

CHECKED BY MPG

SCALE 1" = 40'