

Job	Truss	Truss Type	Qty	Ply	MUNGO HOMES - TELFAIR C 2ND FLR
72503774	F200	Truss	3	1	Job Reference (optional)

UFP Mid Atlantic LLC, 5631 S. NC 62, Burlington, NC, Joy Perry

Run: 8.81 S Sep 13 2024 Print: 8.810 S Sep 13 2024 MiTek Industries, Inc. Fri Feb 07 12:57:44

Page: 1

ID:a?q6?71yTv6SHVH?OlZqv2z8gqv-QrJ0lwb7ElvrF9bl3Go1WwH5zfZhNyfaCUXlb2znXjb

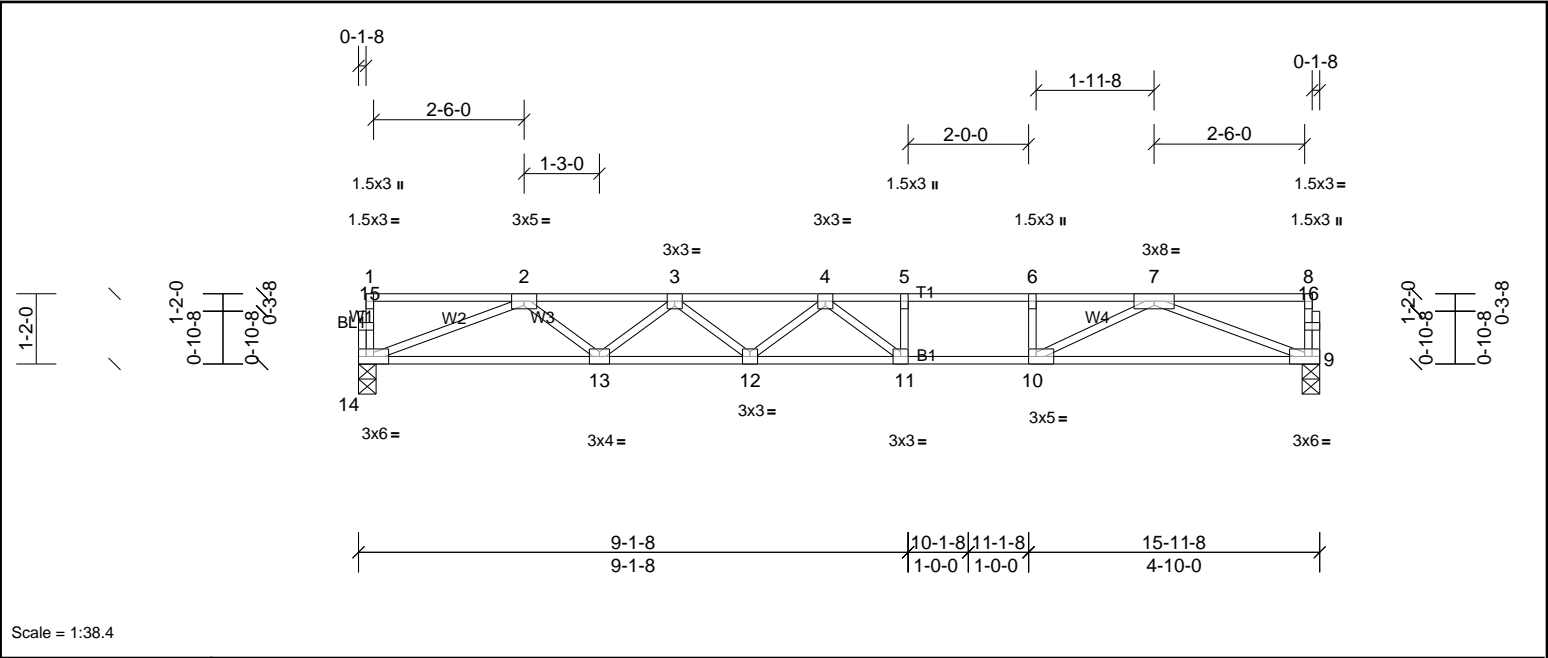


Plate Offsets (X, Y):		[10:0-1-8,Edge]										
<b>Loading</b>	(psf)	<b>Spacing</b>	2-0-0	<b>CSI</b>		<b>DEFL</b>	in	(loc)	I/defl	L/d	<b>PLATES</b>	<b>GRIP</b>
TCLL	40.0	Plate Grip DOL	1.00	TC	0.71	Vert(LL)	-0.32	11-12	>595	480	MT20	244/190
TCDL	10.0	Lumber DOL	1.00	BC	0.75	Vert(CT)	-0.43	11-12	>439	360		
BCLL	0.0	Rep Stress Incr	YES	WB	0.61	Horz(CT)	0.05	9	n/a	n/a		
BCDL	5.0	Code	IRC2015/TPI2014	Matrix-SH							Weight: 77 lb	FT = 20%F, 12%E

**LUMBER**  
TOP CHORD 2x4 SP SS(flat)  
BOT CHORD 2x4 SP SS(flat)  
WEBS 2x4 SP No.3(flat)  
OTHERS 2x4 SP No.3(flat)

**BRACING**  
TOP CHORD Structural wood sheathing directly applied or 6-0-0 oc purlins, except end verticals.  
BOT CHORD Rigid ceiling directly applied or 10-0-0 oc bracing.

**REACTIONS** (lb/size) 9=858/0-3-8, (min. 0-1-8), 14=858/0-3-8, (min. 0-1-8)

**FORCES** (lb) - Max. Comp./Max. Ten. - All forces 250 (lb) or less except when shown.  
TOP CHORD 2-3=-2391/0, 3-4=-3135/0, 4-5=-2950/0, 5-6=-2950/0, 6-7=-2950/0  
BOT CHORD 13-14=0/1852, 12-13=0/2903, 11-12=0/3260, 10-11=0/2950, 9-10=0/1854  
WEBS 6-10=-421/0, 2-14=-1986/0, 2-13=0/700, 3-13=-667/0, 3-12=0/302, 4-11=-561/170, 7-9=-1987/0, 7-10=0/1281

**NOTES**  
1) Unbalanced floor live loads have been considered for this design.  
2) This truss is designed in accordance with the 2015 International Residential Code sections R502.11.1 and R802.10.2 and referenced standard ANSI/TPI 1.  
3) Recommend 2x6 strongbacks, on edge, spaced at 10-00-00 oc and fastened to each truss with 3-10d (0.131" X 3") nails. Strongbacks to be attached to walls at their outer ends or restrained by other means.



UFP Mid Atlantic LLC, 5631 S. NC 62, Burlington, NC, Joy Perry Run: 8.81 S Sep 13 2024 Print: 8.810 S Sep 13 2024 MiTek Industries, Inc. Fri Feb 07 12:57:44 Page: 1  
ID:a?g6?71yTv6SHVH?OIzqv2z8ggv-QrJ0lb7ElvrF9bl3Go1WwH5ofW0NwNaCUXlb2znXjb

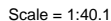


Plate Offsets (X, Y):	[5:0-2-0,Edge], [8:0-3-0,Edge], [9:0-1-8,Edge], [10:0-1-8,Edge], [13:0-1-8,Edge], [14:0-1-8,Edge]
-----------------------	---

<b>LUMBER</b>		<b>BRACING</b>	
TOP CHORD	2x4 SP No.2(flat)	TOP CHORD	Structural wood sheathing directly applied or 5-2-7 oc purlins, except end verticals.
BOT CHORD	2x4 SP No.1(flat)	BOT CHORD	Rigid ceiling directly applied or 10-0-0 oc bracing, Except: 2-2-0 oc bracing: 14-15.
WEBS	2x4 SP No.3(flat)		
OTHERS	2x4 SP No.3(flat)		
<b>REACTIONS</b>	(lb/size)	10=904/0-2-15, (min. 0-1-8), 18=898/0-3-8, (min. 0-1-8)	
<b>FORCES</b>	(lb) - Max. Comp./Max. Ten. - All forces 250 (lb) or less except when shown.		
TOP CHORD	2-3=-2532/0, 3-4=-3419/0, 4-5=-3424/0, 5-6=-3325/0, 6-7=-3325/0, 7-8=-3325/0, 8-9=-3325/0, 9-10=-1008/0		
BOT CHORD	17-18=0/1962, 16-17=0/3071, 15-16=0/3071, 14-15=0/3720, 13-14=0/3325, 12-13=0/1983		
WEBS	8-13=-645/0, 9-13=0/1589, 9-12=-1239/0, 10-12=0/1257, 2-18=-2104/0, 2-17=0/743, 3-17=-701/0, 3-15=0/452, 5-15=-383/0, 5-14=-615/224		

## NOTES

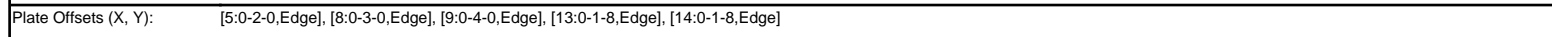
- 1) Unbalanced floor live loads have been considered for this design.
- 2) All plates are MT20 plates unless otherwise indicated.
- 3) Provide mechanical connection (by others) of truss to bearing plate at joint(s) 10.
- 4) This truss is designed in accordance with the 2015 International Residential Code sections R502.11.1 and R802.10.2 and referenced standard ANSI/TPI 1.
- 5) Recommend 2x6 strongbacks, on edge, spaced at 10-00-00 oc and fastened to each truss with 3-10d (0.131" X 3") nails. Strongbacks to be attached to walls at their outer ends or restrained by other means.
- 6) Gap between inside of top chord bearing and first diagonal or vertical web shall not exceed 0.500in.
- 7) CAUTION. Do not erect truss backwards.



This design is based upon parameters shown, and is for an individual building component to be installed and loaded vertically. Applicability of design parameters and proper incorporation of component is responsibility of the Building Designer. Building Designer shall verify all design information on this sheet for conformance with conditions and requirements of the specific building and governing codes and ordinances. Building Designer accepts responsibility for the correctness or accuracy of the design information as it may relate to a specific building. Certification is valid only when truss is fabricated by a UFPI plant. Bracing shown is for lateral support of truss members only and does not replace erection and permanent bracing. Refer to Building Component Safety Information (BCSI) for general guidance regarding storage, erection and bracing available from SBCA and Truss Plate Institute.



UFP Mid Atlantic LLC, 5631 S. NC 62, Burlington, NC, Joy Perry Run: 8.81 S Sep 13 2024 Print: 8.810 S Sep 13 2024 MiTek Industries, Inc. Fri Feb 07 12:57:44 Page: 1  
ID:a?g6?71yTv6SHVH?OIzQv2z8ggv-QrJ0wb7ElvrF9bl3Go1WwH4qfWnNwHaCUXlb2znXjb



<b>LUMBER</b>		<b>BRACING</b>	
TOP CHORD	2x4 SP No.2(flat)	TOP CHORD	Structural wood sheathing directly applied or 4-5-7 oc purlins, except end verticals.
BOT CHORD	2x4 SP No.1(flat)		
WEBS	2x4 SP No.3(flat)	BOT CHORD	Rigid ceiling directly applied or 10-0-0 oc bracing, Except:
OTHERS	2x4 SP No.3(flat)		2-2-0 oc bracing: 14-15.

<b>REACTIONS</b>	(lb/size)	12=913/0-3-8, (min. 0-1-8), 18=913/0-3-8, (min. 0-1-8)
<b>FORCES</b>	(lb) - Max. Comp./Max. Ten. - All forces 250 (lb) or less except when shown.	
TOP CHORD	2-3=-2588/0, 3-4=-3502/0, 4-5=-3504/0, 5-6=-3481/0, 6-7=-3481/0, 7-8=-3481/0, 8-9=-3481/0	
BOT CHORD	17-18=0/1999, 16-17=0/3145, 15-16=0/3145, 14-15=0/3814, 13-14=0/3481, 12-13=0/2115	
WEBS	8-13=-597/0, 2-18=-2144/0, 2-17=0/767, 3-17=-725/0, 3-15=0/465, 5-15=-397/0, 5-14=-571/277, 9-12=-2250/0, 9-13=0/1601	

NOTES	
1)	Unbalanced floor live loads have been considered for this design.
2)	All plates are MT20 plates unless otherwise indicated.
3)	This truss is designed in accordance with the 2015 International Residential Code sections R502.11.1 and R802.10.2 and referenced standard ANSI/TPI 1.
4)	Recommend 2x6 strongbacks, on edge, spaced at 10'-00"-00" oc and fastened to each truss with 3-10d (0.131" X 3") nails. Strongbacks to be attached to walls at their outer ends or restrained by other means.

A red circular professional engineer seal for John M. Presley, North Carolina. The seal contains the text "NORTH CAROLINA", "PROFESSIONAL", "SEAL", "025046", "ENGINEER", and "JOHN M. PRESLEY". A blue ink signature "John M. Presley" is written across the seal, and the date "2/7/25" is handwritten in blue ink next to the license number.

This design is based upon parameters shown, and is for an individual building component to be installed and loaded vertically. Applicability of design parameters and proper incorporation of component is responsibility of the Building Designer. Building Designer shall verify all design information on this sheet for conformance with conditions and requirements of the specific building and governing codes and ordinances. Building Designer accepts responsibility for the correctness or accuracy of the design information as it may relate to a specific building. Certification is valid only when truss is fabricated by a UFPI plant. Bracing shown is for lateral support of truss members only and does not replace erection and permanent bracing. Refer to Building Component Safety Information (BCSI) for general guidance regarding storage, erection and bracing available from SBCA and Truss Plate Institute.

Job 72503774	Truss F202	Truss Type Truss	Qty 3	Ply 1	MUNGO HOMES - TELFAIR C 2ND FLR Job Reference (optional)
-----------------	---------------	---------------------	----------	----------	---

UFP Mid Atlantic LLC, 5631 S. NC 62, Burlington, NC, Joy Perry

Run: 8.81 S Sep 13 2024 Print: 8.810 S Sep 13 2024 MiTek Industries, Inc. Fri Feb 07 12:57:44

Page: 1

ID:a?q6?71yTv6SHVH?OIzqv2z8gqv-QrJ0lwb7ElvrF9bl3Go1WwH3IfW5Nw0aCUXIb2znXjb

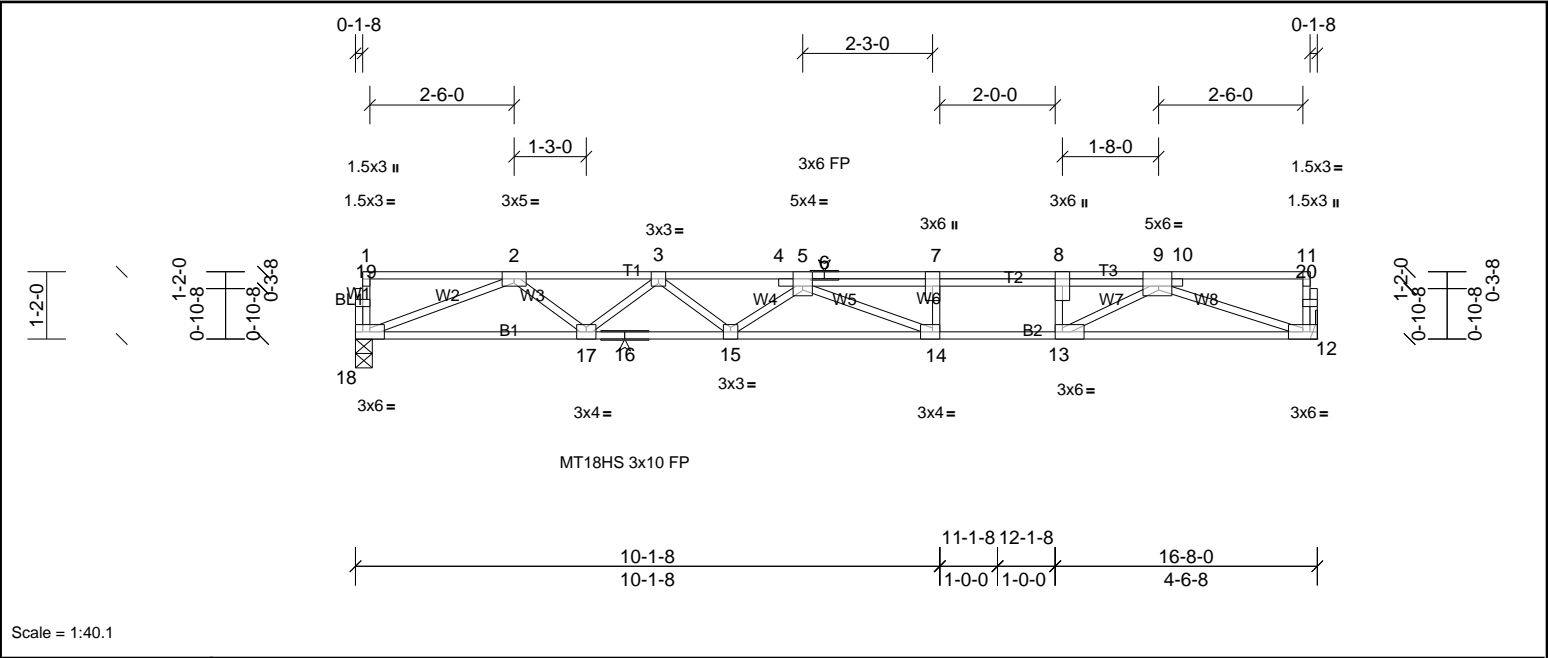


Plate Offsets (X, Y): [5:0-2-0,Edge], [8:0-3-0,Edge], [9:0-2-12,Edge], [13:0-1-8,Edge], [14:0-1-8,Edge]

Loading	(psf)	Spacing	2-0-0	CSI	DEFL	in	(loc)	I/defl	L/d	PLATES	GRIP
TCLL	40.0	Plate Grip DOL	1.00	TC	0.85	Vert(LL)	-0.32	14-15	>612	480	MT18HS 244/190
TCDL	10.0	Lumber DOL	1.00	BC	0.91	Vert(CT)	-0.45	14-15	>438	360	MT20 244/190
BCLL	0.0	Rep Stress Incr	YES	WB	0.72	Horz(CT)	0.06	12	n/a	n/a	
BCDL	5.0	Code	IRC2015/TPI2014	Matrix-SH							Weight: 90 lb FT = 20%F, 12%E

LUMBER		BRACING	
TOP CHORD	2x4 SP No.2(flat)	TOP CHORD	Structural wood sheathing directly applied or 2-2-0 oc purlins, except end verticals.
BOT CHORD	2x4 SP No.1(flat)	BOT CHORD	Rigid ceiling directly applied or 10-0-0 oc bracing.
WEBS	2x4 SP No.3(flat)		
OTHERS	2x4 SP No.3(flat)		

REACTIONS	(lb/size)	12=897/ Mechanical, (min. 0-1-8), 18=897/0-3-8, (min. 0-1-8)
FORCES	(lb) - Max. Comp./Max. Ten. - All forces 250 (lb) or less except when shown.	
TOP CHORD	2-3=-2530/0, 3-4=-3393/0, 4-5=-3381/0, 5-6=-3311/0, 6-7=-3311/0, 7-8=-3311/0, 8-9=-3311/0	
BOT CHORD	17-18=0/1958, 16-17=0/3070, 15-16=0/3070, 14-15=0/3668, 13-14=0/3311, 12-13=0/2091	
WEBS	8-13=-640/0, 2-18=-2099/0, 2-17=0/745, 3-17=-703/0, 3-15=0/420, 5-15=-349/0, 5-14=-571/240, 9-12=-2224/0, 9-13=0/1502	

- NOTES**
- Unbalanced floor live loads have been considered for this design.
  - All plates are MT20 plates unless otherwise indicated.
  - This truss is designed in accordance with the 2015 International Residential Code sections R502.11.1 and R802.10.2 and referenced standard ANSI/TPI 1.
  - Recommend 2x6 strongbacks, on edge, spaced at 10-00-00 oc and fastened to each truss with 3-10d (0.131" X 3") nails. Strongbacks to be attached to walls at their outer ends or restrained by other means.



Job 72503774	Truss F203	Truss Type Truss	Qty 11	Ply 1	MUNGO HOMES - TELFAIR C 2ND FLR Job Reference (optional)
-----------------	---------------	---------------------	-----------	----------	---

UFP Mid Atlantic LLC, 5631 S. NC 62, Burlington, NC, Joy Perry

Run: 8.81 S Sep 13 2024 S Sep 13 2024 MiTek Industries, Inc. Fri Feb 07 12:57:45

Page: 1

ID:gybFDKc1Jhrnb30WAxcCoLz1jXX-QrJ0lb7ElvrF9bl3Go1WwH3IfYeNuOaCUXIb2znXjb

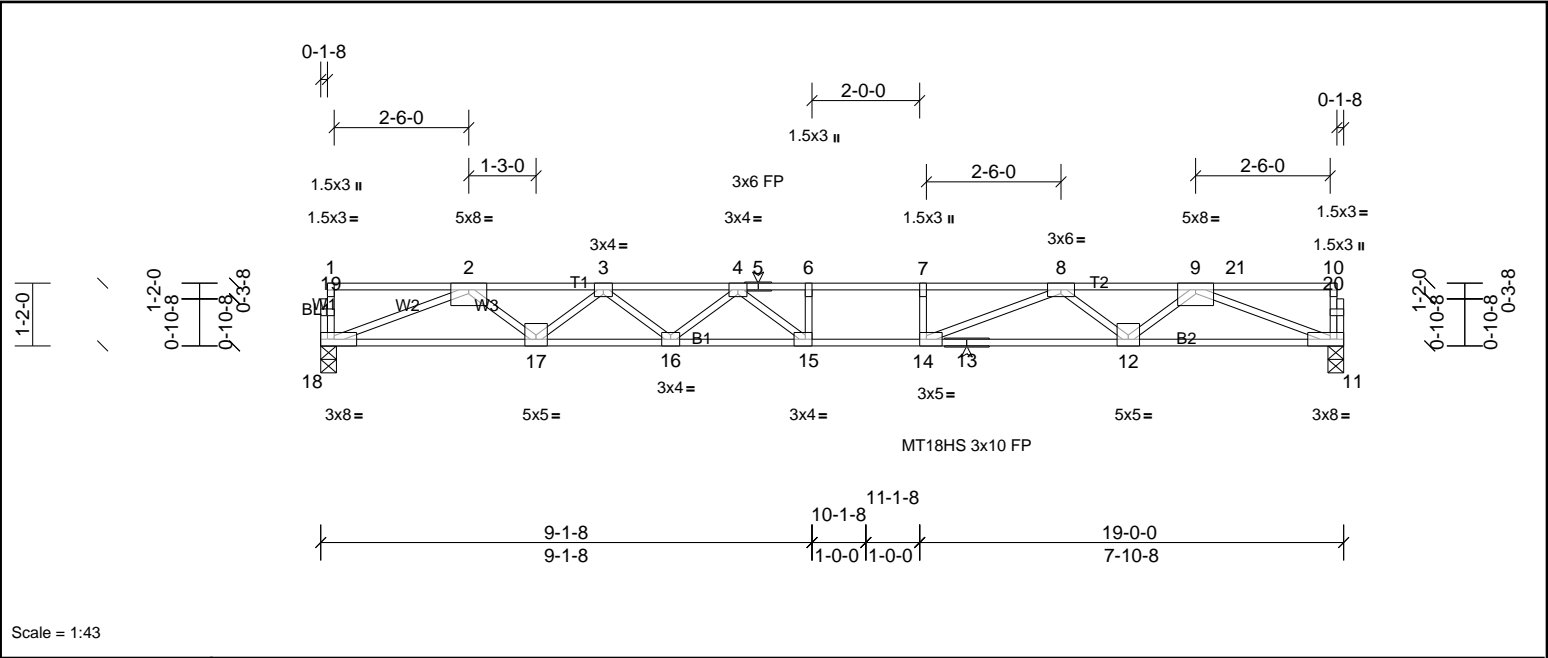


Plate Offsets (X, Y): [14:0-1-8,Edge], [15:0-1-8,Edge]												
<b>Loading</b>	(psf)	<b>Spacing</b>	2-0-0	<b>CSI</b>		<b>DEFL</b>	in	(loc)	l/defl	L/d	<b>PLATES</b>	<b>GRIP</b>
TCLL	40.0	Plate Grip DOL	1.00	TC	0.85	Vert(LL)	-0.36	15-16	>617	480	MT18HS	244/190
TCDL	10.0	Lumber DOL	1.00	BC	0.81	Vert(CT)	-0.59	14-15	>382	360	MT20	244/190
BCLL	0.0	Rep Stress Incr	NO	WB	0.88	Horz(CT)	0.10	11	n/a	n/a		
BCDL	5.0	Code	IRC2015/TPI2014	Matrix-SH							Weight: 92 lb	FT = 20%F, 12%E

<b>LUMBER</b>		<b>BRACING</b>	
TOP CHORD	2x4 SP SS(flat)	TOP CHORD	Structural wood sheathing directly applied or 5'-1-3 oc purlins, except end verticals.
BOT CHORD	2x4 SP SS(flat)	BOT CHORD	Rigid ceiling directly applied or 10'-0-0 oc bracing.
WEBS	2x4 SP No.3(flat)		
OTHERS	2x4 SP No.3(flat)		

<b>REACTIONS</b>	(lb/size)	11=1397/0-3-8, (min. 0-1-8), 18=1160/0-3-8, (min. 0-1-8)
<b>FORCES</b>	(lb) - Max. Comp./Max. Ten. - All forces 250 (lb) or less except when shown.	
TOP CHORD	2-3=-3517/0, 3-4=-4944/0, 4-5=-5753/0, 5-6=-5753/0, 6-7=-5753/0, 7-8=-5753/0, 8-9=-3935/0	
BOT CHORD	17-18=0/2611, 16-17=0/4381, 15-16=0/5475, 14-15=0/5753, 13-14=0/4807, 12-13=0/4807, 11-12=0/3014	
WEBS	6-15=-380/0, 7-14=-361/0, 2-18=-2802/0, 2-17=0/1180, 3-17=-1126/0, 3-16=0/732, 4-16=-692/0, 4-15=-30/816, 8-14=0/1253, 8-12=-1135/0, 9-12=0/1199, 9-11=-3231/0	

- NOTES**
- Unbalanced floor live loads have been considered for this design.
  - All plates are MT20 plates unless otherwise indicated.
  - This truss is designed in accordance with the 2015 International Residential Code sections R502.11.1 and R802.10.2 and referenced standard ANSI/TPI 1.
  - Load case(s) 1 has/have been modified. Building designer must review loads to verify that they are correct for the intended use of this truss.
  - Recommend 2x6 strongbacks, on edge, spaced at 10'-00-00 oc and fastened to each truss with 3-10d (0.131" X 3") nails. Strongbacks to be attached to walls at their outer ends or restrained by other means.
- LOAD CASE(S)** Standard
- Dead + Floor Live (balanced): Lumber Increase=1.00, Plate Increase=1.00  
Uniform Loads (lb/ft)  
Vert: 11-18=-10, 1-4=-100, 4-21=-140, 20-21=-176



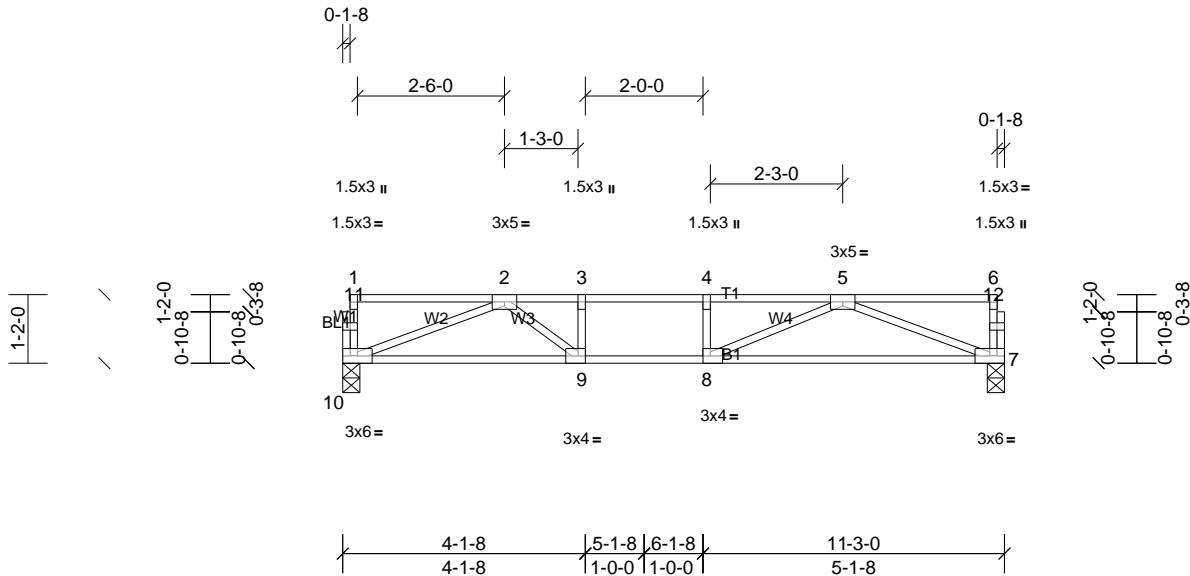
Job 72503774	Truss F204	Truss Type Truss	Qty 2	Ply 1	MUNGO HOMES - TELFAIR C 2ND FLR Job Reference (optional)
-----------------	---------------	---------------------	----------	----------	---

UFP Mid Atlantic LLC, 5631 S. NC 62, Burlington, NC, Joy Perry

Run: 8.81 S Sep 13 2024 Print: 8.810 S Sep 13 2024 MiTek Industries, Inc. Fri Feb 07 12:57:45

Page: 1

ID:a?q6?71yTv6SHVH?OlZqv2z8gqv-u1tOzGcm?b1tJAXdzKG28pEI2tC6RvjQ8HI7UznXja



Scale = 1:39.3

Plate Offsets (X, Y): [8:0-1-8,Edge], [9:0-1-8,Edge]

Loading	(psf)	Spacing	2-0-0	CSI		DEFL	in	(loc)	l/defl	L/d	PLATES	GRIP
TCLL	40.0	Plate Grip DOL	1.00	TC	0.86	Vert(LL)	-0.15	7-8	>859	480	MT20	244/190
TCDL	30.0	Lumber DOL	1.00	BC	0.86	Vert(CT)	-0.29	7-8	>454	360		
BCLL	0.0	Rep Stress Incr	YES	WB	0.48	Horz(CT)	0.03	7	n/a	n/a		
BCDL	5.0	Code	IRC2015/TPI2014	Matrix-SH							Weight: 55 lb	FT = 20%F, 12%E

LUMBER		BRACING	
TOP CHORD	2x4 SP No.2(flat)	TOP CHORD	Structural wood sheathing directly applied or 5-6-0 oc purlins, except end verticals.
BOT CHORD	2x4 SP No.2(flat)	BOT CHORD	Rigid ceiling directly applied or 10-0-0 oc bracing.
WEBS	2x4 SP No.3(flat)		
OTHERS	2x4 SP No.3(flat)		

**REACTIONS** (lb/size) 7=816/0-3-8, (min. 0-1-8), 10=816/0-3-8, (min. 0-1-8)

**FORCES** (lb) - Max. Comp./Max. Ten. - All forces 250 (lb) or less except when shown.

TOP CHORD 2-3=-2128/0, 3-4=-2128/0, 4-5=-2128/0

BOT CHORD 9-10=0/1647, 8-9=0/2128, 7-8=0/1639

WEBS 3-9=-377/0, 2-10=-1762/0, 2-9=0/751, 5-7=-1754/0, 5-8=0/668

- NOTES**
- Unbalanced floor live loads have been considered for this design.
  - This truss is designed in accordance with the 2015 International Residential Code sections R502.11.1 and R802.10.2 and referenced standard ANSI/TPI 1.
  - Recommend 2x6 strongbacks, on edge, spaced at 10-00-00 oc and fastened to each truss with 3-10d (0.131" X 3") nails. Strongbacks to be attached to walls at their outer ends or restrained by other means.



Job 72503774	Truss F205	Truss Type Truss	Qty 3	Ply 1	MUNGO HOMES - TELFAIR C 2ND FLR Job Reference (optional)
-----------------	---------------	---------------------	----------	----------	---

UFP Mid Atlantic LLC, 5631 S. NC 62, Burlington, NC, Joy Perry

Run: 8.81 S Sep 13 2024 Print: 8.810 S Sep 13 2024 MiTek Industries, Inc. Fri Feb 07 12:57:45

Page: 1

ID:a?q6?71yTv6SHVH?OIzqv2z8gqv-u1tOzGcm?b1itJAXdzKG28pHf2xK6TGjQ8HI7UznXja

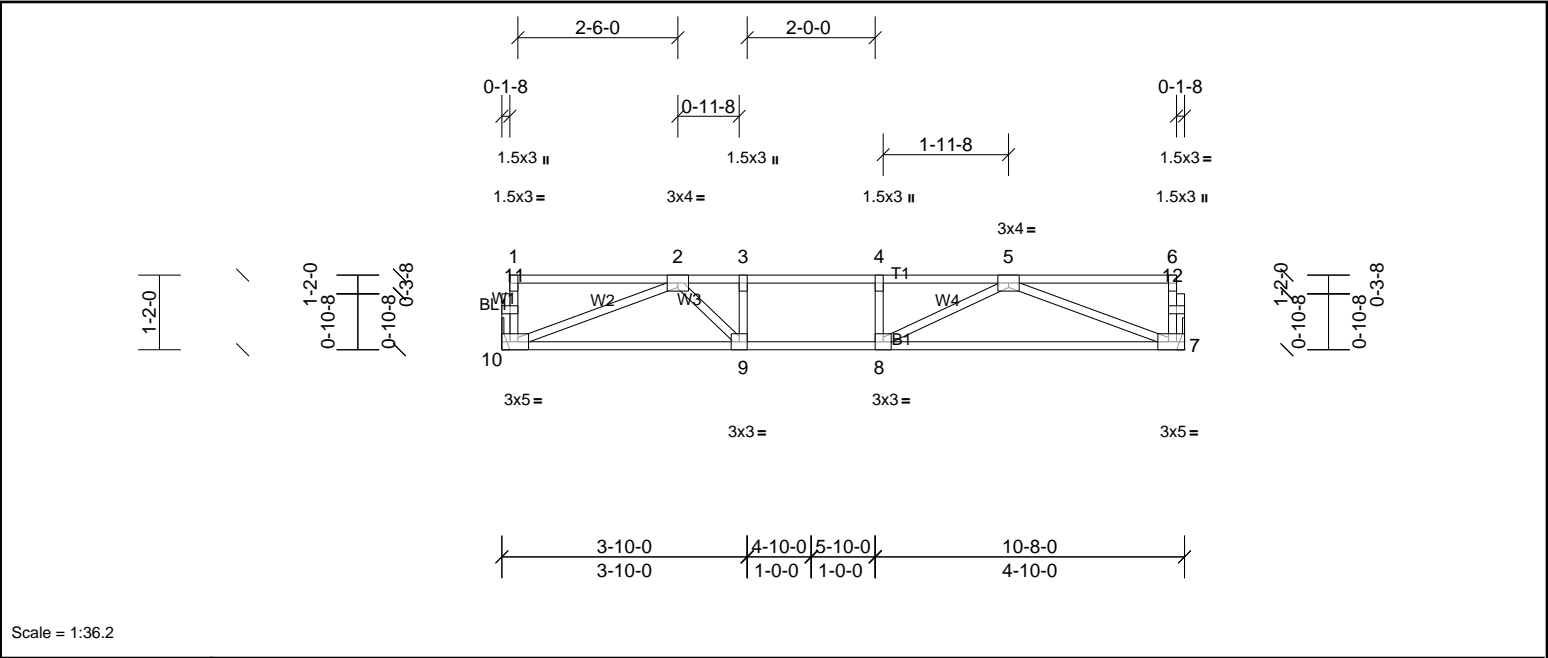
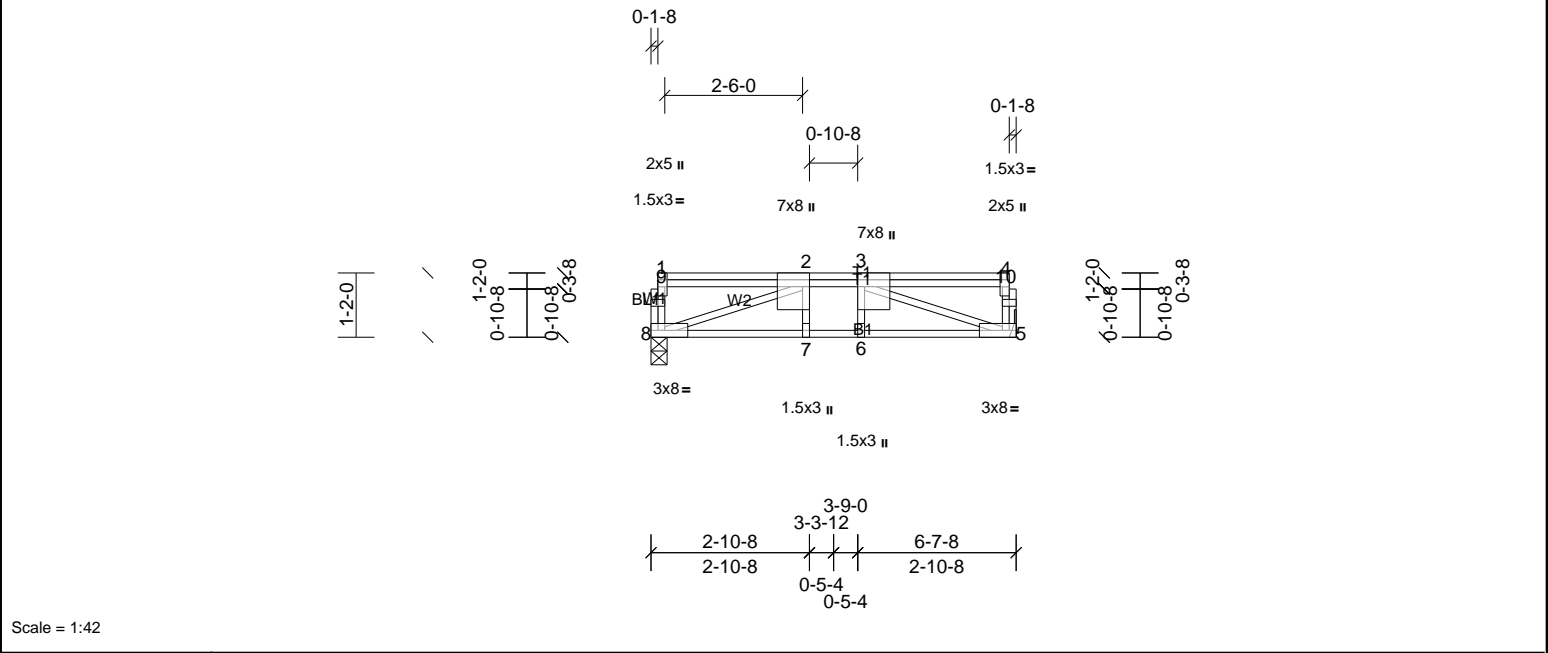


Plate Offsets (X, Y): [7:0-2-0,Edge], [10:0-2-0,Edge]												
<b>Loading</b>	(psf)	<b>Spacing</b>	2-0-0	<b>CSI</b>		<b>DEFL</b>	in	(loc)	I/defl	L/d	<b>PLATES</b>	<b>GRIP</b>
TCLL	40.0	Plate Grip DOL	1.00	TC	0.65	Vert(LL)	-0.12	7-8	>999	480	MT20	244/190
TCDL	10.0	Lumber DOL	1.00	BC	0.59	Vert(CT)	-0.19	7-8	>647	360		
BCLL	0.0	Rep Stress Incr	YES	WB	0.33	Horz(CT)	0.02	7	n/a	n/a		
BCDL	5.0	Code	IRC2015/TPI2014	Matrix-SH							Weight: 52 lb	FT = 20%F, 12%E

<b>LUMBER</b>		<b>BRACING</b>	
TOP CHORD	2x4 SP No.2(flat)	TOP CHORD	Structural wood sheathing directly applied or 6-0-0 oc purlins, except end verticals.
BOT CHORD	2x4 SP No.2(flat)	BOT CHORD	Rigid ceiling directly applied or 10-0-0 oc bracing.
WEBS	2x4 SP No.3(flat)		
OTHERS	2x4 SP No.3(flat)		
<b>REACTIONS</b>		<b>NOTES</b>	
(lb/size)		7=567/ Mechanical, (min. 0-1-8), 10=567/ Mechanical, (min. 0-1-8)	
<b>FORCES</b>		(lb) - Max. Comp./Max. Ten. - All forces 250 (lb) or less except when shown.	
TOP CHORD		2-3=-1396/0, 3-4=-1396/0, 4-5=-1396/0	
BOT CHORD		9-10=0/1129, 8-9=0/1396, 7-8=0/1112	
WEBS		3-9=-308/0, 2-10=-1207/0, 2-9=0/534, 5-7=-1190/0, 5-8=0/458	
<b>NOTES</b>		1) Unbalanced floor live loads have been considered for this design.	
		2) This truss is designed in accordance with the 2015 International Residential Code sections R502.11.1 and R802.10.2 and referenced standard ANSI/TPI 1.	
		3) Recommend 2x6 strongbacks, on edge, spaced at 10-00-00 oc and fastened to each truss with 3-10d (0.131" X 3") nails. Strongbacks to be attached to walls at their outer ends or restrained by other means.	



Job 72503774	Truss F206	Truss Type Truss	Qty 1	Ply 1	MUNGO HOMES - TELFAIR C 2ND FLR Job Reference (optional)
-----------------	---------------	---------------------	----------	----------	---



Scale = 1:42

Plate Offsets (X, Y): [2:0-3-0,Edge], [3:0-3-0,Edge], [4:0-3-0,Edge]

Loading	(psf)	Spacing	2-0-0	CSI		DEFL	in	(loc)	I/defl	L/d	PLATES	GRIP
TCLL	40.0	Plate Grip DOL	1.00	TC	0.77	Vert(LL)	-0.09	5-6	>865	480	MT20	244/190
TCDL	10.0	Lumber DOL	1.00	BC	0.94	Vert(CT)	-0.12	5-6	>623	360		
BCLL	0.0	Rep Stress Incr	NO	WB	0.77	Horz(CT)	0.02	5	n/a	n/a		
BCDL	5.0	Code	IRC2015/TPI2014	Matrix-SH							Weight: 44 lb	FT = 20%F, 12%E

LUMBER		BRACING	
TOP CHORD	2x4 SP No.2(flat)	TOP CHORD	Structural wood sheathing directly applied or 6-0-0 oc purlins, except end verticals.
BOT CHORD	2x4 SP No.1(flat)	BOT CHORD	Rigid ceiling directly applied or 10-0-0 oc bracing.
WEBS	2x4 SP No.3(flat)		
OTHERS	2x4 SP No.3(flat)		

REACTIONS	(lb/size)	5=1247/ Mechanical, (min. 0-1-8), 8=1002/0-3-8, (min. 0-1-8)
FORCES	(lb) - Max. Comp./Max. Ten. - All forces 250 (lb) or less except when shown.	
TOP CHORD	5-10=-254/0, 4-10=-253/0, 2-3=-2660/0	
BOT CHORD	7-8=0/2660, 6-7=0/2660, 5-6=0/2660	
WEBS	2-8=-2829/0, 3-5=-2815/0	

- NOTES**
- Unbalanced floor live loads have been considered for this design.
  - This truss is designed in accordance with the 2015 International Residential Code sections R502.11.1 and R802.10.2 and referenced standard ANSI/TPI 1.
  - Magnitude of user added load(s) on this truss have been applied uniformly across all gravity load cases with no adjustments.
  - Recommend 2x6 strongbacks, on edge, spaced at 10-00-00 oc and fastened to each truss with 3-10d (0.131" X 3") nails. Strongbacks to be attached to walls at their outer ends or restrained by other means.

LOAD CASE(S)	Standard
1) Dead + Floor Live (balanced): Lumber Increase=1.00, Plate Increase=1.00	
Uniform Loads (lb/ft)	
Vert: 5-8=-10, 1-4=-100	
Concentrated Loads (lb)	
Vert: 3=-1560	



Job 72503774	Truss F207	Truss Type Truss	Qty 2	Ply 1	MUNGO HOMES - TELFAIR C 2ND FLR Job Reference (optional)
-----------------	---------------	---------------------	----------	----------	---

UFP Mid Atlantic LLC, 5631 S. NC 62, Burlington, NC, Joy Perry

Run: 8.81 S Sep 13 2024 Print: 8.810 S Sep 13 2024 MiTek Industries, Inc. Fri Feb 07 12:57:45

Page: 1

ID:a?q6?71yTv6SHVH?OlZqv2z8gqv-u1tOzGcm?b1itJAxdzKG28pGs2w56OOjQ8HI7UznXja

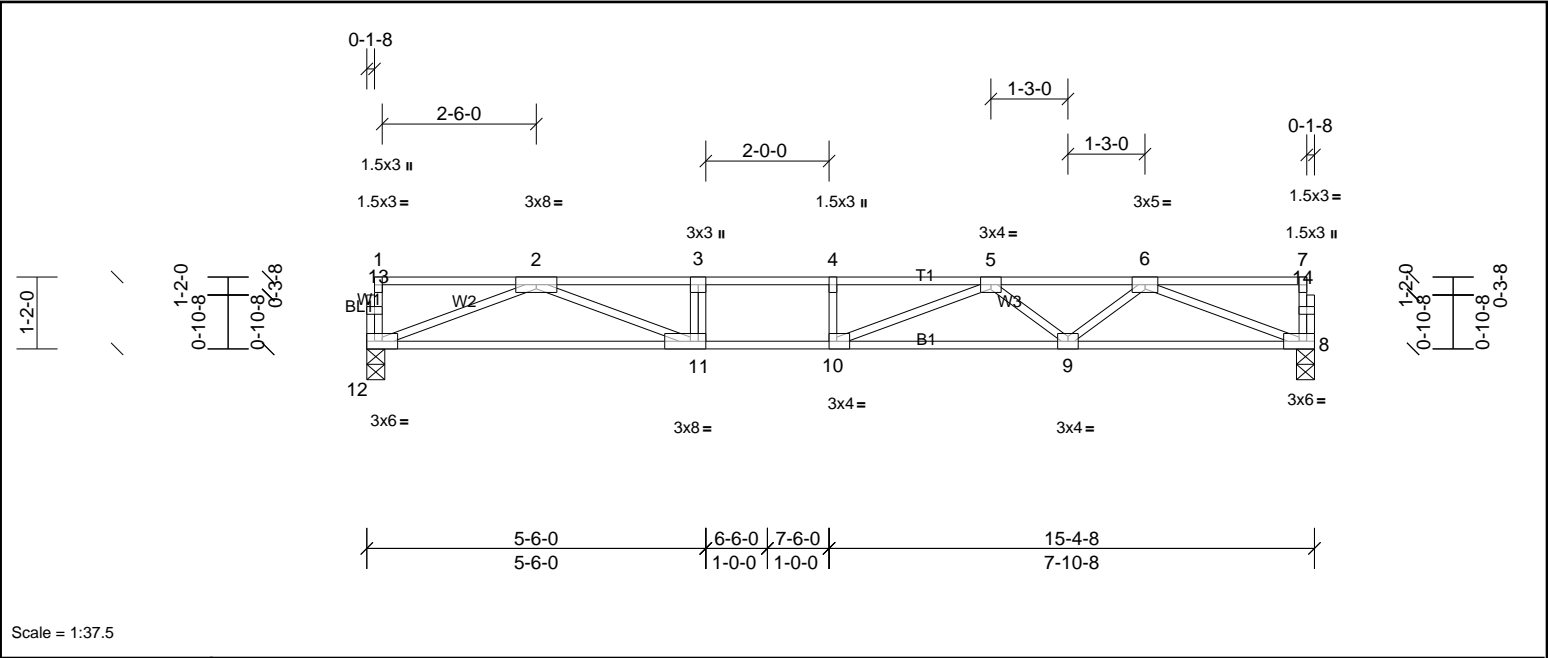


Plate Offsets (X, Y): [10-0-1-8,Edge], [11-0-3-0,Edge]

Loading	(psf)	Spacing	1-7-3	CSI		DEFL	in	(loc)	l/defl	L/d	PLATES	GRIP
TCLL	40.0	Plate Grip DOL	1.00	TC	0.76	Vert(LL)	-0.26	9-10	>694	480	MT20	244/190
TCDL	30.0	Lumber DOL	1.00	BC	0.67	Vert(CT)	-0.45	9-10	>402	360		
BCLL	0.0	Rep Stress Incr	YES	WB	0.64	Horz(CT)	0.05	8	n/a	n/a		
BCDL	5.0	Code	IRC2015/TPI2014	Matrix-SH							Weight: 75 lb	FT = 20%F, 12%E

LUMBER		BRACING	
TOP CHORD	2x4 SP No.1(flat)	TOP CHORD	Structural wood sheathing directly applied or 5-6-0 oc purlins, except end verticals.
BOT CHORD	2x4 SP SS(flat)	BOT CHORD	Rigid ceiling directly applied or 10-0-0 oc bracing.
WEBS	2x4 SP No.3(flat)		
OTHERS	2x4 SP No.3(flat)		

REACTIONS	(lb/size)	8=900/0-3-8, (min. 0-1-8), 12=900/0-3-8, (min. 0-1-8)
FORCES	(lb) - Max. Comp./Max. Ten. - All forces 250 (lb) or less except when shown.	
TOP CHORD	2-3=-3169/0, 3-4=-3169/0, 4-5=-3169/0, 5-6=-2511/0	
BOT CHORD	11-12=0/1944, 10-11=0/3169, 9-10=0/3000, 8-9=0/1947	
WEBS	3-11=-378/0, 2-12=-2084/0, 2-11=0/1350, 6-8=-2087/0, 6-9=0/735, 5-9=-636/0, 5-10=-51/486	

- NOTES
- Unbalanced floor live loads have been considered for this design.
  - This truss is designed in accordance with the 2015 International Residential Code sections R502.11.1 and R802.10.2 and referenced standard ANSI/TPI 1.
  - Recommend 2x6 strongbacks, on edge, spaced at 10-00-00 oc and fastened to each truss with 3-10d (0.131" X 3") nails. Strongbacks to be attached to walls at their outer ends or restrained by other means.



Job 72503774	Truss F208	Truss Type Truss	Qty 6	Ply 1	MUNGO HOMES - TELFAIR C 2ND FLR Job Reference (optional)
-----------------	---------------	---------------------	----------	----------	---

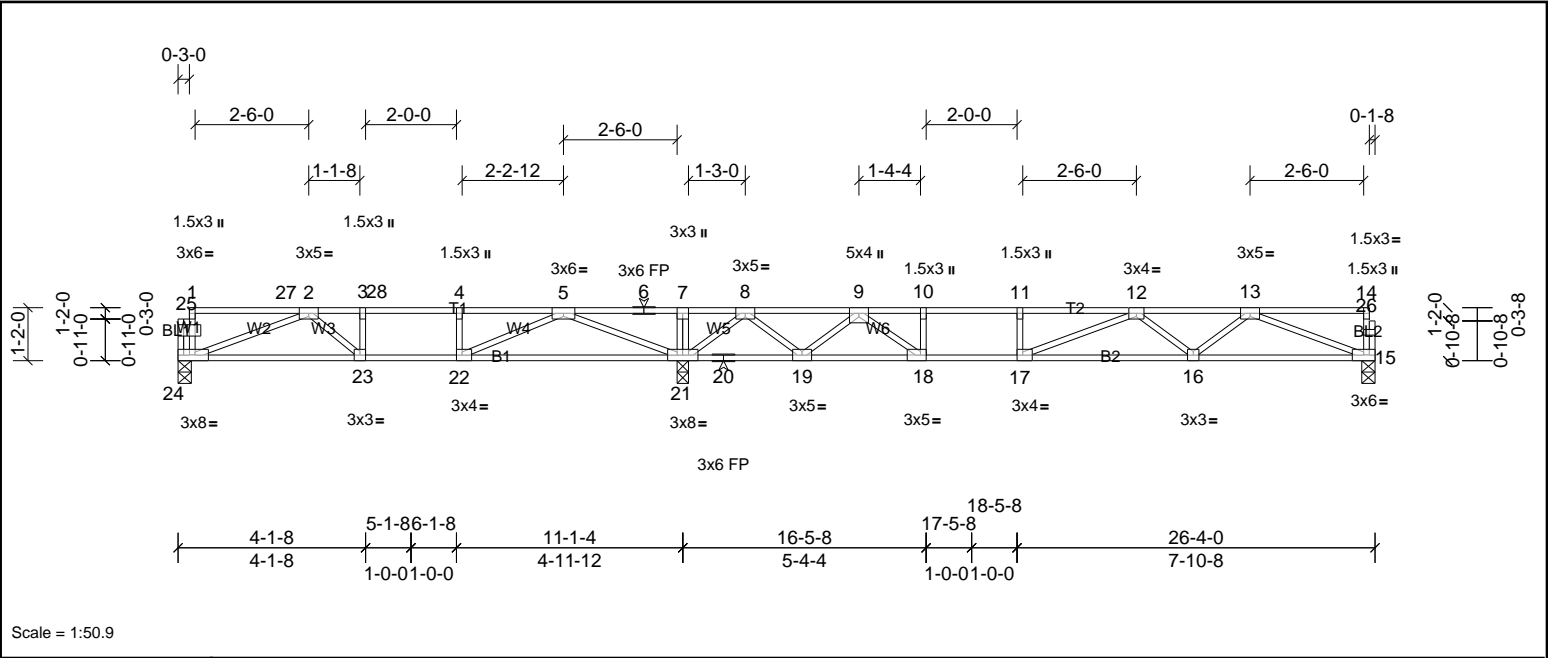


Plate Offsets (X, Y):	[17:0-1-8,Edge], [18:0-1-8,Edge], [22:0-1-8,Edge], [24:0-3-8,Edge]
-----------------------	--

Loading	(psf)	Spacing	2-0-0	CSI		DEFL	in	(loc)	L/defl	L/d	PLATES	GRIP
TCLL	40.0	Plate Grip DOL	1.00	TC	0.74	Vert(LL)	-0.26	16-17	>686	480	MT20	244/190
TCDL	10.0	Lumber DOL	1.00	BC	0.68	Vert(CT)	-0.37	16-17	>495	360		
BCLL	0.0	Rep Stress Incr	NO	WB	0.56	Horz(CT)	0.04	15	n/a	n/a		
BCDL	5.0	Code	IRC2015/TPI2014	Matrix-SH							Weight: 128 lb	FT = 20%F, 12%E

LUMBER	BRACING
TOP CHORD 2x4 SP SS(flat)	TOP CHORD Structural wood sheathing directly applied or 6-0-0 oc purlins, except end verticals.
BOT CHORD 2x4 SP SS(flat)	BOT CHORD Rigid ceiling directly applied or 10-0-0 oc bracing, Except:
WEBS 2x4 SP No.3(flat)	6-0-0 oc bracing: 19-21,18-19.
OTHERS 2x4 SP No.3(flat)	
REACTIONS (lb/size)	
15=733/0-3-8, (min. 0-1-8), 21=1896/0-3-0, (min. 0-1-8), 24=719/0-3-8, (min. 0-1-8)	
Max Grav 15=760 (LC 14), 21=1896 (LC 1), 24=765 (LC 8)	
FORCES (lb) - Max. Comp./Max. Ten. - All forces 250 (lb) or less except when shown.	
TOP CHORD 2-3=-1790/0, 3-28=-1790/0, 4-28=-1790/0, 4-5=-1790/0, 5-6=0/1362, 6-7=0/1362, 7-8=0/1352, 8-9=-888/270, 9-10=-2383/0, 10-11=-2383/0, 11-12=-2383/0, 12-13=-2072/0	
BOT CHORD 23-24=0/1551, 22-23=0/1790, 21-22=0/979, 20-21=-518/178, 19-20=-518/178, 18-19=-9/1640, 17-18=0/2383, 16-17=0/2434, 15-16=0/1619	
WEBS 4-22=-382/0, 10-18=-440/0, 7-21=-291/0, 2-24=-1644/0, 2-23=0/318, 5-21=-2040/0, 5-22=0/1064, 8-21=-1349/0, 8-19=0/964, 9-19=-1047/0, 9-18=0/1097, 13-15=-1735/0, 13-16=0/590, 12-16=-471/0, 12-17=-337/179	

- NOTES**
- Unbalanced floor live loads have been considered for this design.
  - This truss is designed in accordance with the 2015 International Residential Code sections R502.11.1 and R802.10.2 and referenced standard ANSI/TPI 1.
  - Load case(s) 1 has/have been modified. Building designer must review loads to verify that they are correct for the intended use of this truss.
  - Recommend 2x6 strongbacks, on edge, spaced at 10-00-00 oc and fastened to each truss with 3-10d (0.131" X 3") nails. Strongbacks to be attached to walls at their outer ends or restrained by other means.
  - CAUTION, Do not erect truss backwards.
- LOAD CASE(S)** Standard
- 1) Dead + Floor Live (balanced): Lumber Increase=1.00, Plate Increase=1.00
- Uniform Loads (lb/ft)
- Vert: 15-24=-10, 1-27=-140, 27-28=-176, 7-28=-140, 7-14=-100



Job 72503774	Truss F209	Truss Type Truss	Qty 5	Ply 1	MUNGO HOMES - TELFAIR C 2ND FLR Job Reference (optional)
-----------------	---------------	---------------------	----------	----------	---

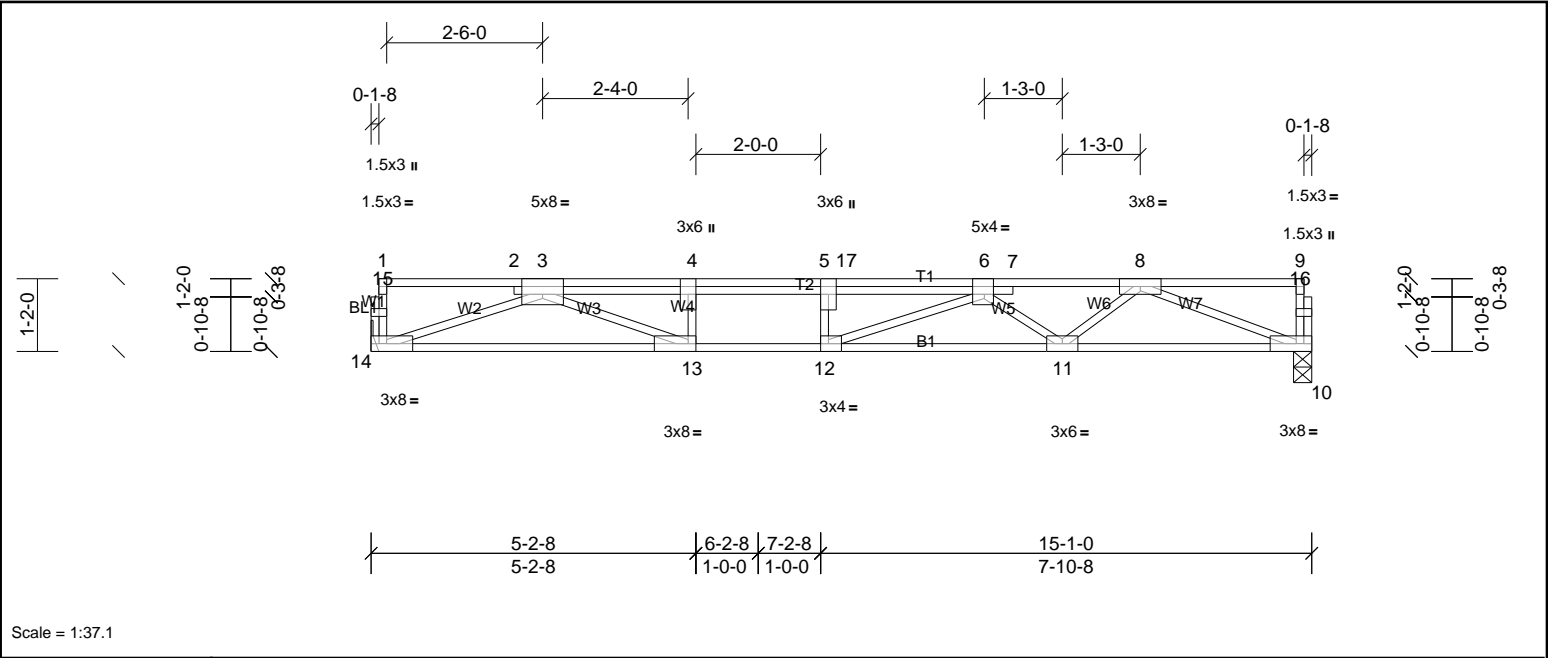


Plate Offsets (X, Y): [3:0-4-0,Edge], [5:0-3-0,Edge], [6:0-1-12,Edge], [12:0-1-8,Edge], [13:0-1-8,Edge]

Loading	(psf)	Spacing	2-0-0	CSI		DEFL	in	(loc)	I/defl	L/d	PLATES	GRIP
TCLL	40.0	Plate Grip DOL	1.00	TC	0.98	Vert(LL)	-0.19	11-12	>925	480	MT20	244/190
TCDL	30.0	Lumber DOL	1.00	BC	0.66	Vert(CT)	-0.39	11-12	>462	360		
BCLL	0.0	Rep Stress Incr	NO	WB	0.88	Horz(CT)	0.06	10	n/a	n/a		
BCDL	5.0	Code	IRC2015/TPI2014	Matrix-SH							Weight: 84 lb	FT = 20%F, 12%E

LUMBER		BRACING	
TOP CHORD	2x4 SP No.2(flat)	TOP CHORD	Structural wood sheathing directly applied or 4-1-1 oc purlins, except end verticals.
BOT CHORD	2x4 SP SS(flat)	BOT CHORD	Rigid ceiling directly applied or 10-0-0 oc bracing.
WEBS	2x4 SP No.3(flat)		
OTHERS	2x4 SP No.3(flat)		

REACTIONS (lb/size) 10=1141/0-3-8, (min. 0-1-8), 14=1155/ Mechanical, (min. 0-1-8)

FORCES (lb) - Max. Comp./Max. Ten. - All forces 250 (lb) or less except when shown.  
TOP CHORD 3-4=-4301/0, 4-5=-4301/0, 5-17=-4301/0, 6-17=-4301/0, 6-7=-3210/0, 7-8=-3211/0  
BOT CHORD 13-14=0/2678, 12-13=0/4301, 11-12=0/3941, 10-11=0/2455  
WEBS 4-13=-594/0, 5-12=-255/0, 3-14=-2849/0, 3-13=0/1841, 8-10=-2631/0, 8-11=0/984, 6-11=-928/0, 6-12=0/733

- NOTES
- Unbalanced floor live loads have been considered for this design.
  - This truss is designed in accordance with the 2015 International Residential Code sections R502.11.1 and R802.10.2 and referenced standard ANSI/TPI 1.
  - Load case(s) 1 has/have been modified. Building designer must review loads to verify that they are correct for the intended use of this truss.
  - Recommend 2x6 strongbacks, on edge, spaced at 10-00-00 oc and fastened to each truss with 3-10d (0.131" X 3") nails. Strongbacks to be attached to walls at their outer ends or restrained by other means.

LOAD CASE(S) Standard  
1) Dead + Floor Live (balanced): Lumber Increase=1.00, Plate Increase=1.00  
Uniform Loads (lb/ft)  
Vert: 10-14=-10, 1-4=-140, 4-17=-176, 9-17=-140

UFP Mid Atlantic LLC, 5631 S. NC 62, Burlington, NC, Joy Perry Run: 8.81 S Sep 13 2024 Print: 8.810 S Sep 13 2024 MiTek Industries, Inc. Fri Feb 07 12:57:46 Page: 1  
ID:a?q6?71yTv6SHVH?OIzqv2z8qqv-MERmAccOmv9ZVTi7BhrvblMQXSburspsfo0sfwnXjZ



<b>Loading</b>	(psf)	<b>Spacing</b>	2-0-0	<b>CSI</b>		<b>DEFL</b>	in	(loc)	l/defl	L/d	<b>PLATES</b>	<b>GRIP</b>
TCLL	40.0	Plate Grip DOL	1.00	TC	0.83	Vert(LL)	-0.35	15-16	>621	480	MT18HS	244/190
TCDL	10.0	Lumber DOL	1.00	BC	0.95	Vert(CT)	-0.46	15-16	>467	360	MT20	244/190
BCLL	0.0	Rep Stress Incr	YES	WB	0.63	Horz(CT)	0.07	13	n/a	n/a		
BCDL	5.0	Code	IRC2015/TPI2014	Matrix-SH							Weight: 108 lb	FT = 20%F, 12%E

<b>REACTIONS</b>	(lb/size)	13=949/0-3-8, (min. 0-1-8), 20=1405/0-3-8, (min. 0-1-8)
	Max Grav	13=975 (LC 4), 20=1405 (LC 1)

NOTES	
1)	Unbalanced floor live loads have been considered for this design.
2)	All plates are MT20 plates unless otherwise indicated.
3)	This truss is designed in accordance with the 2015 International Residential Code sections R502.11.1 and R802.10.2 and referenced standard ANSI/TPI 1.
4)	Recommend 2x6 strongbacks, on edge, spaced at 10-00-00 oc and fastened to each truss with 3-10d (0.131" X 3") nails. Strongbacks to be attached to walls at their outer ends or restrained by other means.
5)	CAUTION, Do not erect truss backwards.

A circular red professional engineer seal for John M. Presley, North Carolina. The seal contains the text "NORTH CAROLINA", "PROFESSIONAL", "SEAL", "025046", "ENGINEER", and "JOHN M. PRESLEY". A blue ink signature "John M. Presley" is written over the seal, and the date "2/7/25" is handwritten in blue ink at the bottom right of the seal.

This design is based upon parameters shown, and is for an individual building component to be installed and loaded vertically. Applicability of design parameters and proper incorporation of component is responsibility of the Building Designer. Building Designer shall verify all design information on this sheet for conformance with conditions and requirements of the specific building and governing codes and ordinances. Building Designer accepts responsibility for the correctness or accuracy of the design information as it may relate to a specific building. Certification is valid only when truss is fabricated by a UFPI plant. Bracing shown is for lateral support of truss members only and does not replace erection and permanent bracing. Refer to Building Component Safety Information (BCSI) for general guidance regarding storage, erection and bracing available from SBCA and Truss Plate Institute.

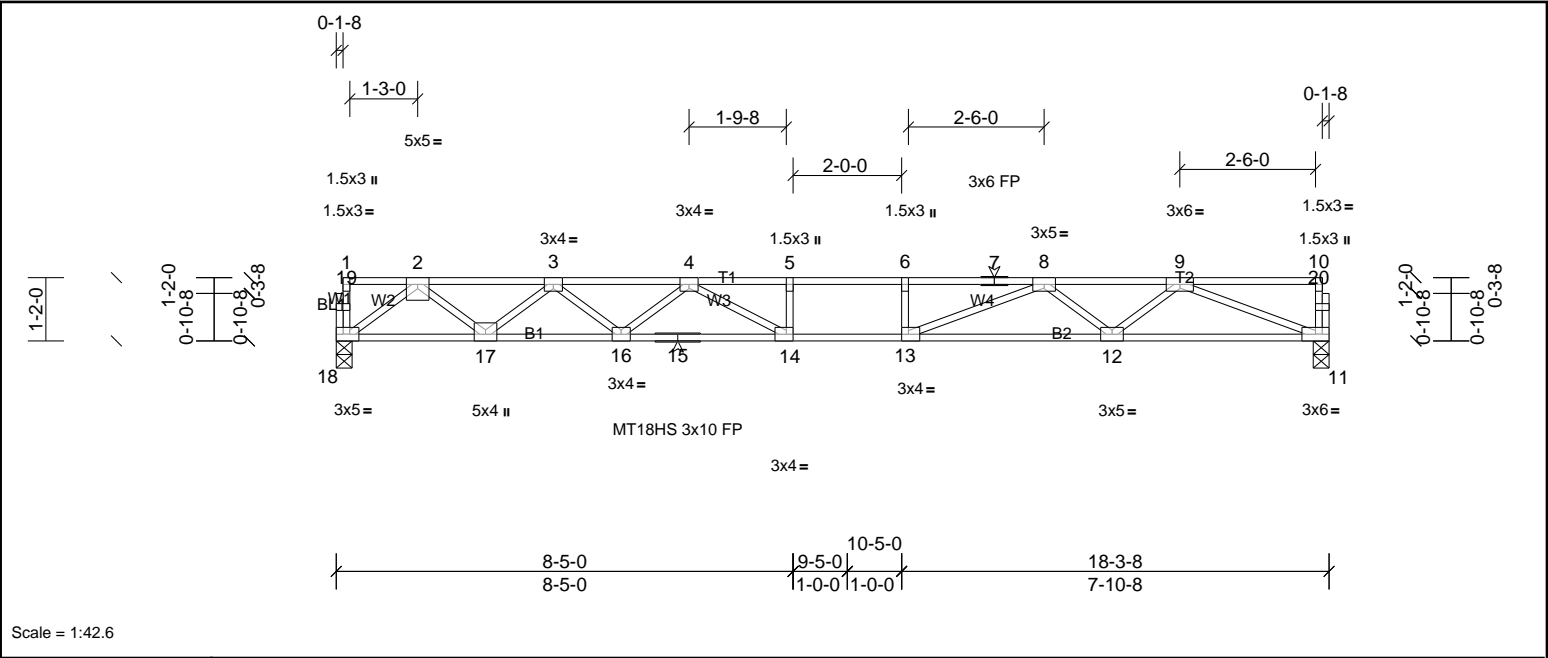
Job 72503774	Truss F211	Truss Type Truss	Qty 3	Ply 1	MUNGO HOMES - TELFAIR C 2ND FLR Job Reference (optional)
-----------------	---------------	---------------------	----------	----------	---

UFP Mid Atlantic LLC, 5631 S. NC 62, Burlington, NC, Joy Perry

Run: 8.81 S Sep 13 2024 Print: 8.810 S Sep 13 2024 MiTek Industries, Inc. Fri Feb 07 12:57:46

Page: 1

ID:a?q6?71yTv6SHVH?OIzqv2z8gqv-MERmAccOmv9ZVTI7BhrVbLMP9SA8rsisfo0sfwznXjZ



Scale = 1:42.6

Plate Offsets (X, Y): [13:0-1-8,Edge], [14:0-1-8,Edge], [18:0-2-0,Edge]

Loading	(psf)	Spacing	2-0-0	CSI		DEFL	in	(loc)	l/defl	L/d	PLATES	GRIP
TCLL	40.0	Plate Grip DOL	1.00	TC	0.85	Vert(LL)	-0.35	13-14	>619	480	MT18HS	244/190
TCDL	10.0	Lumber DOL	1.00	BC	1.00	Vert(CT)	-0.48	14	>450	360	MT20	244/190
BCLL	0.0	Rep Stress Incr	YES	WB	0.64	Horz(CT)	0.08	11	n/a	n/a		
BCDL	5.0	Code	IRC2015/TPI2014	Matrix-SH							Weight: 89 lb	FT = 20%F, 12%E

LUMBER		BRACING	
TOP CHORD	2x4 SP No.2(flat)	TOP CHORD	Structural wood sheathing directly applied or 2-2-0 oc purlins, except end verticals.
BOT CHORD	2x4 SP No.1(flat)	BOT CHORD	Rigid ceiling directly applied or 1-4-12 oc bracing.
WEBS	2x4 SP No.3(flat)		
OTHERS	2x4 SP No.3(flat)		

REACTIONS	(lb/size)	11=986/0-3-8, (min. 0-1-8), 18=986/0-3-8, (min. 0-1-8)
FORCES	(lb) - Max. Comp./Max. Ten. - All forces 250 (lb) or less except when shown.	
TOP CHORD	2-3=-2102/0, 3-4=-3461/0, 4-5=-4251/0, 5-6=-4251/0, 6-7=-4251/0, 7-8=-4251/0, 8-9=-2876/0	
BOT CHORD	17-18=0/1235, 16-17=0/2938, 15-16=0/3943, 14-15=0/3943, 13-14=0/4251, 12-13=0/3525, 11-12=0/2178	
WEBS	6-13=-264/0, 2-18=-1547/0, 2-17=0/1128, 3-17=-1089/0, 3-16=0/680, 4-16=-627/0, 4-14=-84/732, 9-11=-2337/0, 9-12=0/908, 8-12=-845/0, 8-13=0/1040	

- NOTES**
- Unbalanced floor live loads have been considered for this design.
  - All plates are MT20 plates unless otherwise indicated.
  - This truss is designed in accordance with the 2015 International Residential Code sections R502.11.1 and R802.10.2 and referenced standard ANSI/TPI 1.
  - Recommend 2x6 strongbacks, on edge, spaced at 10-00-00 oc and fastened to each truss with 3-10d (0.131" X 3") nails. Strongbacks to be attached to walls at their outer ends or restrained by other means.



This design is based upon parameters shown, and is for an individual building component to be installed and loaded vertically. Applicability of design parameters and proper incorporation of component is responsibility of the Building Designer. Building Designer shall verify all design information on this sheet for conformance with conditions and requirements of the specific building and governing codes and ordinances. Building Designer accepts responsibility for the correctness or accuracy of the design information as it may relate to a specific building. Certification is valid only when truss is fabricated by a UFPI plant. Bracing shown is for lateral support of truss members only and does not replace erection and permanent bracing. Refer to Building Component Safety Information (BCSI) for general guidance regarding storage, erection and bracing available from SBCA and Truss Plate Institute.



Job 72503774	Truss F212	Truss Type Truss	Qty 3	Ply 1	MUNGO HOMES - TELFAIR C 2ND FLR Job Reference (optional)
-----------------	---------------	---------------------	----------	----------	---

UFP Mid Atlantic LLC, 5631 S. NC 62, Burlington, NC, Joy Perry

Run: 8.81 S Sep 13 2024 Print: 8.810 S Sep 13 2024 MiTek Industries, Inc. Fri Feb 07 12:57:46

Page: 1

ID:a?q6?71yTv6SHVH?OIzqv2z8gqv-MERmAccOmv9ZVTI7BhrVbLMQ6SA9rrlsfo0sfwznXjZ

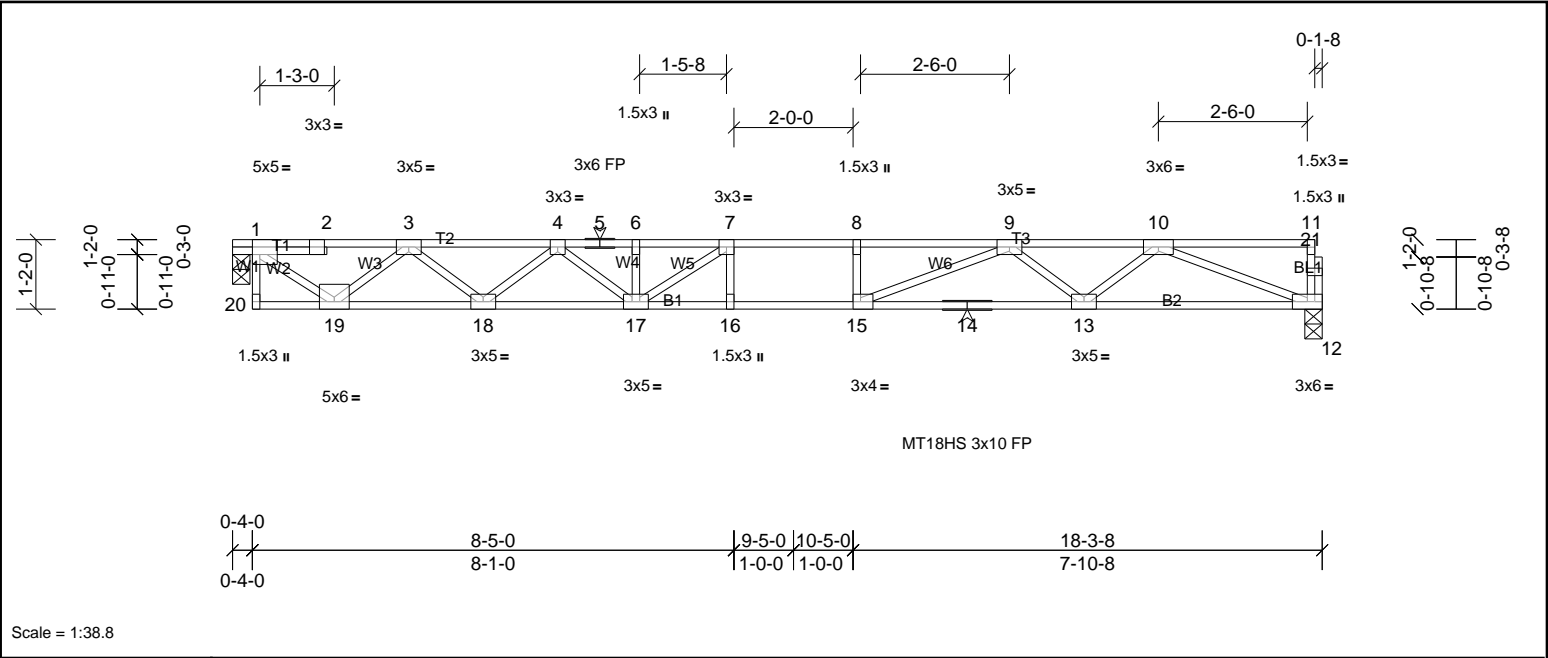


Plate Offsets (X, Y):		[1:0-1-8,Edge], [15:0-1-8,Edge]										
<b>Loading</b>	(psf)	<b>Spacing</b>	2-0-0	<b>CSI</b>		<b>DEFL</b>	in	(loc)	I/defl	L/d	<b>PLATES</b>	<b>GRIP</b>
TCLL	40.0	Plate Grip DOL	1.00	TC	0.79	Vert(LL)	-0.32	15-16	>659	480	MT20	244/190
TCDL	10.0	Lumber DOL	1.00	BC	1.00	Vert(CT)	-0.44	15-16	>479	360	MT18HS	244/190
BCLL	0.0	Rep Stress Incr	YES	WB	0.66	Horz(CT)	0.02	12	n/a	n/a		
BCDL	5.0	Code	IRC2015/TPI2014	Matrix-SH							Weight: 90 lb	FT = 20%F, 12%E

<b>LUMBER</b>		<b>BRACING</b>	
TOP CHORD	2x4 SP No.2(flat)	TOP CHORD	Structural wood sheathing directly applied or 4-8-2 oc purlins, except end verticals.
BOT CHORD	2x4 SP No.1(flat)	BOT CHORD	Rigid ceiling directly applied or 10-0-0 oc bracing, Except:
WEBS	2x4 SP No.3(flat)		2-2-0 oc bracing: 16-17
OTHERS	2x4 SP No.3(flat)		1-4-12 oc bracing: 15-16.

<b>REACTIONS</b>	(lb/size)	1=977/0-3-8, (min. 0-1-8), 12=971/0-3-8, (min. 0-1-8)
<b>FORCES</b>	(lb) - Max. Comp./Max. Ten. - All forces 250 (lb) or less except when shown.	
TOP CHORD	1-2=-1123/0, 2-3=-1119/0, 3-4=-2770/0, 4-5=-3829/0, 5-6=-3829/0, 6-7=-3829/0, 7-8=-4128/0, 8-9=-4128/0, 9-10=-2823/0	
BOT CHORD	18-19=0/2095, 17-18=0/3415, 16-17=0/4128, 15-16=0/4128, 14-15=0/3453, 13-14=0/3453, 12-13=0/2142	
WEBS	1-19=0/1396, 3-19=-1271/0, 3-18=0/879, 4-18=-839/0, 4-17=0/529, 7-17=-752/124, 10-12=-2297/0, 10-13=0/887, 9-13=-821/0, 9-15=0/978	

- NOTES**
- 1) Unbalanced floor live loads have been considered for this design.
  - 2) All plates are MT20 plates unless otherwise indicated.
  - 3) This truss is designed in accordance with the 2015 International Residential Code sections R502.11.1 and R802.10.2 and referenced standard ANSI/TPI 1.
  - 4) Recommend 2x6 strongbacks, on edge, spaced at 10-00-00 oc and fastened to each truss with 3-10d (0.131" X 3") nails. Strongbacks to be attached to walls at their outer ends or restrained by other means.
  - 5) Gap between inside of top chord bearing and first diagonal or vertical web shall not exceed 0.500in.
  - 6) CAUTION, Do not erect truss backwards.



Job	Truss	Truss Type	Qty	Ply	MUNGO HOMES - TELFAIR C 2ND FLR
72503774	FG1	Truss	1	1	Job Reference (optional)

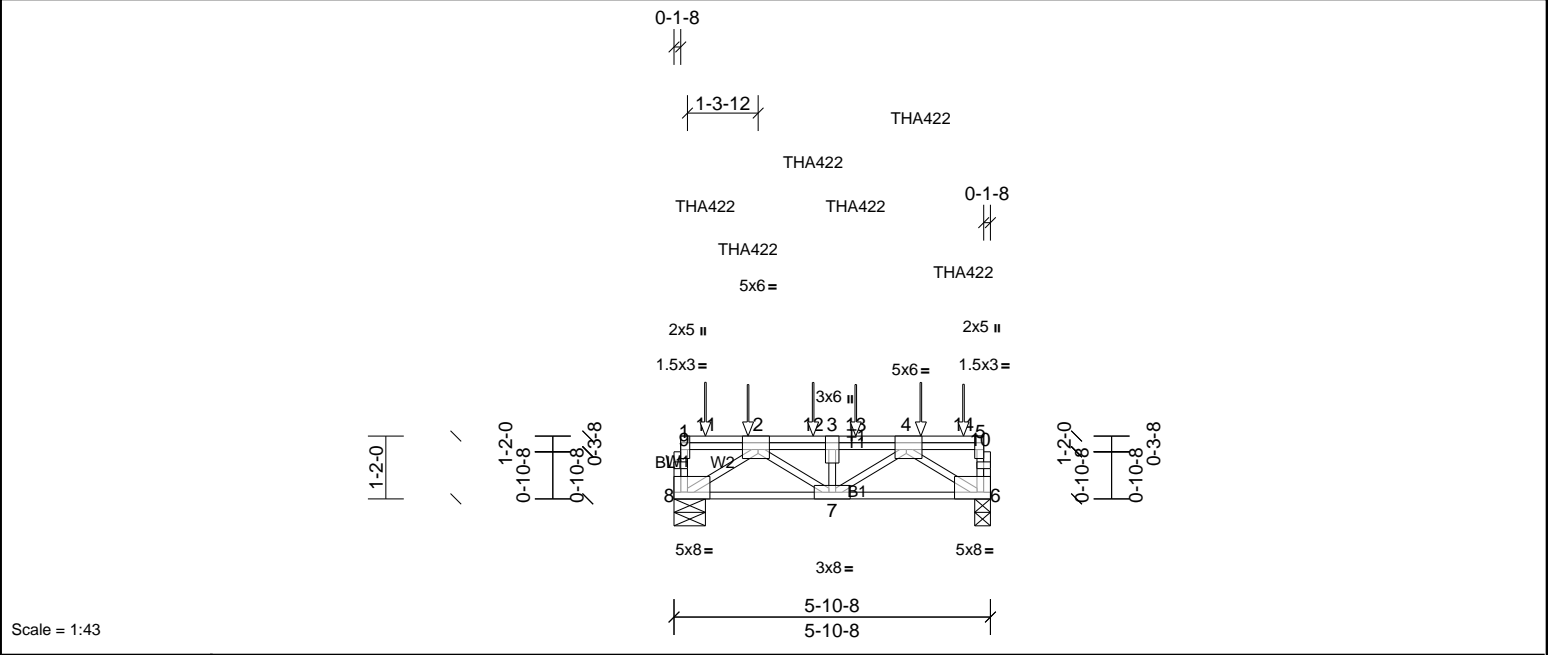


Plate Offsets (X, Y): [2:0-2-8,Edge], [4:0-2-8,Edge], [5:0-3-0,Edge], [6:Edge,0-1-8], [8:Edge,0-1-8]

Loading	(psf)	Spacing	2-0-0	CSI	DEFL	in	(loc)	I/defl	L/d	PLATES	GRIP	
TCLL	40.0	Plate Grip DOL	1.00	TC	0.50	Vert(LL)	-0.03	7	>999	480	MT20	244/190
TCDL	10.0	Lumber DOL	1.00	BC	0.81	Vert(CT)	-0.05	7	>999	360		
BCLL	0.0	Rep Stress Incr	NO	WB	0.71	Horz(CT)	0.02	6	n/a	n/a		
BCDL	5.0	Code	IRC2015/TPI2014	Matrix-SH							Weight: 40 lb	FT = 20%F, 12%E

LUMBER		BRACING	
TOP CHORD	2x4 SP No.2(flat)	TOP CHORD	Structural wood sheathing directly applied or 5-10-8 oc purlins, except end verticals.
BOT CHORD	2x4 SP No.2(flat)	BOT CHORD	Rigid ceiling directly applied or 10-0-0 oc bracing.
WEBS	2x4 SP No.3(flat)		
OTHERS	2x4 SP No.3(flat)		

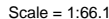
REACTIONS	(lb/size)	6=2168/0-3-8, (min. 0-1-8), 8=2293/0-7-0, (min. 0-1-9)
FORCES	(lb) - Max. Comp./Max. Ten. - All forces 250 (lb) or less except when shown.	
TOP CHORD	8-9=-608/0, 1-9=-607/0, 6-10=-450/0, 5-10=-449/0, 2-12=-3304/0, 3-12=-3304/0, 3-13=-3304/0, 4-13=-3304/0	
BOT CHORD	7-8=0/2491, 6-7=0/2529	
WEBS	4-6=-3025/0, 2-8=-2967/0, 4-7=0/951, 3-7=-1106/0, 2-7=0/998	

- NOTES**
- This truss is designed in accordance with the 2015 International Residential Code sections R502.11.1 and R802.10.2 and referenced standard ANSI/TPI 1.
  - Recommend 2x6 strongbacks, on edge, spaced at 10-00-00 oc and fastened to each truss with 3-10d (0.131" X 3") nails. Strongbacks to be attached to walls at their outer ends or restrained by other means.
  - Use Simpson Strong-Tie THA422 (6-16d Girder, 6-10d Truss) or equivalent spaced at 2-0-0 oc max. starting at 1-4-8 from the left end to 5-4-8 to connect truss(es) to front face of top chord.
  - Use Simpson Strong-Tie THA422 (6-16d Girder, 6-10d Truss) or equivalent spaced at 2-0-0 oc max. starting at 0-7-0 from the left end to 4-7-0 to connect truss(es) to back face of top chord.
  - Fill all nail holes where hanger is in contact with lumber.
  - In the LOAD CASE(S) section, loads applied to the face of the truss are noted as front (F) or back (B).

LOAD CASE(S)	Standard
1) Dead + Floor Live (balanced): Lumber Increase=1.00, Plate Increase=1.00	
Uniform Loads (lb/ft)	Vert: 6-8=-10, 1-5=-100
Concentrated Loads (lb)	Vert: 4=-797 (B), 2=-467 (F), 11=-827 (B), 12=-797 (B), 13=-467 (F), 14=-501 (F)



UFP Mid Atlantic LLC, 5631 S. NC 62, Burlington, NC, Joy Perry Run: 8.81 S Sep 13 2024 Print: 8.810 S Sep 13 2024 MiTek Industries, Inc. Fri Feb 07 12:57:46 Page: 1  
ID:a?q6?771vTv6SHVH?OIzqv2z8gqv-MERmAccOmv9ZVTI7BhrVbLMPnSE3rqysfo0sfwnXjZ



<b>Loading</b>	(psf)	<b>Spacing</b>	2-0-0	<b>CSI</b>		<b>DEFL</b>	in	(loc)	I/defl	L/d	<b>PLATES</b>	<b>GRIP</b>
TCLL	40.0	Plate Grip DOL	1.00	TC	0.88	Vert(LL)	-0.07	9	>999	480	M18AHS	186/179
TCDL	10.0	Lumber DOL	1.00	BC	0.75	Vert(CT)	-0.12	9-10	>773	360	MT20	244/190
BCLL	0.0	Rep Stress Incr	NO	WB	0.75	Horz(CT)	0.03	7	n/a	n/a		
BCDL	5.0	Code	IRC2015/TPI2014	Matrix-SH							Weight: 72 lb	FT = 20%F, 12%E

<b>REACTIONS</b>	(lb/size)	7=4243/0-3-8, (min. 0-2-15), 12=4520/0-7-0, (min. 0-3-1)
	Max Grav	7=4356 (LC 4), 12=4520 (LC 1)

<b>FORCES</b>	(lb) - Max. Comp./Max. Ten. - All forces 250 (lb) or less except when shown.
TOP CHORD	1-12=-1079/0, 6-7=-353/0, 2-13=-6217/0, 3-13=-6217/0, 3-14=-8192/0, 4-14=-8192/0, 4-15=-6605/0, 5-15=-6605/0
BOT CHORD	11-12=0/4194, 10-11=0/8183, 9-10=0/8192, 8-9=0/8207, 7-8=0/4881
WEBS	2-12=-5410/0, 5-7=-6296/0, 2-11=0/3139, 3-11=-3281/0, 3-10=-403/377, 4-8=-2885/0, 4-9=-452/332, 5-8=0/2760

- 1) Unbalanced floor live loads have been considered for this design.
- 2) All plates are MT20 plates unless otherwise indicated.
- 3) The Fabrication Tolerance at joint 12 = 8%, joint 7 = 8%
- 4) This truss is designed in accordance with the 2015 International Residential Code sections R502.11.1 and R802.10.2 and referenced standard ANSI/TPI 1.
- 5) Recommend 2x6 strongbacks, on edge, spaced at 10-00-00 oc and fastened to each truss with 3-10d (0.131" X 3") nails. Strongbacks to be attached to walls at their outer ends or restrained by other means.
- 6) Use Simpson Strong-Tie THAC422 (6-16d Girder, 6-16d Truss) or equivalent spaced at 2-0-0 oc max. starting at 0-2-2 from the left end to 6-9-8 to connect truss(es) to front face of top chord.
- 7) Use Simpson Strong-Tie THAC422 (6-16d Girder, 6-16d Truss) or equivalent spaced at 2-0-0 oc max. starting at 1-4-8 from the left end to 7-4-8 to connect truss(es) to back face of top chord.
- 8) Fill all nail holes where hanger is in contact with lumber.
- 9) In the LOAD CASE(S) section, loads applied to the face of the truss are noted as front (F) or back (B).

LOAD CASE(S)	Standard
1) Dead + Floor Live (balanced): Lumber Increase=1.00, Plate Increase=1.00 Uniform Loads (lb/ft)	

Concentrated Loads (lb)  
Vert: 1=1103 (F), 2=467 (B), 5=1055 (F), 3=467 (B), 4=1055 (F), 13=1055 (F), 14=1055 (F), 15=467 (B), 16=1159 (B)



This design is based upon parameters shown, and is for an individual building component to be installed and loaded vertically. Applicability of design parameters and proper incorporation of component is responsibility of the Building Designer. Building Designer shall verify all design information on this sheet for conformance with conditions and requirements of the specific building and governing codes and ordinances. Building Designer accepts responsibility for the correctness or accuracy of the design information as it may relate to a specific building. Certification is valid only when truss is fabricated by a UFPI plant. Bracing shown is for lateral support of truss members only and does not replace erection and permanent bracing. Refer to Building Component Safety Information (BCSI) for general guidance regarding storage, erection and bracing available from SBCA and Truss Plate Institute.



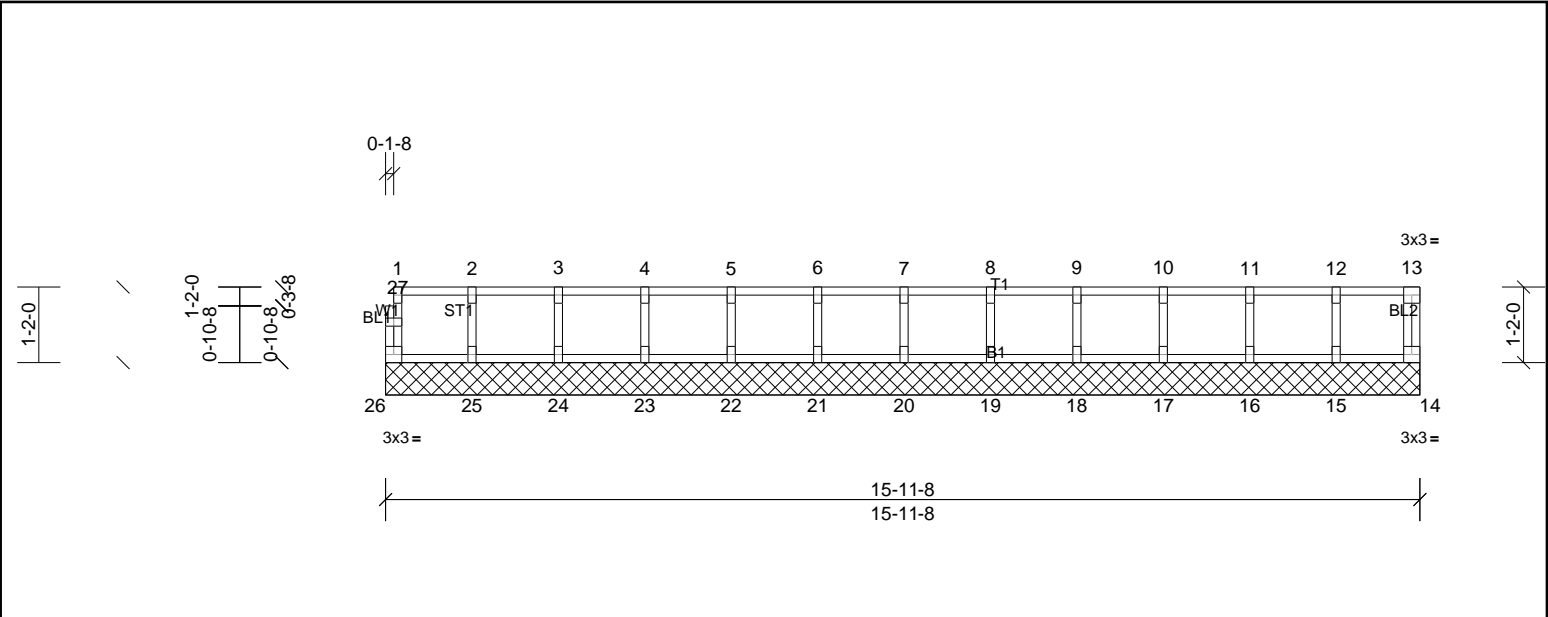
Job	Truss	Truss Type	Qty	Ply	MUNGO HOMES - TELFAIR C 2ND FLR
72503774	K200	Truss	1	1	Job Reference (optional)

UFP Mid Atlantic LLC, 5631 S. NC 62, Burlington, NC, Joy Perry

Run: 8.81 S Sep 13 2024 Print: 8.810 S Sep 13 2024 MiTek Industries, Inc. Fri Feb 07 12:57:47

Page: 1

ID:a?q6?771yTv6SHVH?OIZqv2z8gqv-qQ?9Oyd0XDHQ6dKJIOMk8Zvm3sltaSS0uSmPCNznXjY



Scale = 1:35.7

Loading	(psf)	Spacing	2-0-0	CSI	DEFL	in	(loc)	I/defl	L/d	PLATES	GRIP	
TCLL	40.0	Plate Grip DOL	1.00	TC	0.08	Vert(LL)	n/a	-	n/a	999	MT20	244/190
TCDL	10.0	Lumber DOL	1.00	BC	0.01	Vert(TL)	n/a	-	n/a	999		
BCLL	0.0	Rep Stress Incr	YES	WB	0.03	Horiz(TL)	0.00	14	n/a	n/a		
BCDL	5.0	Code	IRC2015/TPI2014	Matrix-R							Weight: 67 lb	FT = 20%F, 12%E

LUMBER	BRACING
TOP CHORD 2x4 SP No.2(flat)	TOP CHORD Structural wood sheathing directly applied or 6-0-0 oc purlins, except end verticals.
BOT CHORD 2x4 SP No.2(flat)	BOT CHORD Rigid ceiling directly applied or 10-0-0 oc bracing.
WEBS 2x4 SP No.3(flat)	
OTHERS 2x4 SP No.3(flat)	

**REACTIONS** All bearings 15-11-8.  
(lb) - Max Grav All reactions 250 (lb) or less at joint(s) 14, 15, 16, 17, 18, 19, 20, 21, 22, 23, 24, 25, 26

**FORCES** (lb) - Max. Comp./Max. Ten. - All forces 250 (lb) or less except when shown.

- NOTES**
- 1) All plates are 1.5x3 MT20 unless otherwise indicated.
  - 2) Gable requires continuous bottom chord bearing.
  - 3) Truss to be fully sheathed from one face or securely braced against lateral movement (i.e. diagonal web).
  - 4) Gable studs spaced at 1-4-0 oc.
  - 5) This truss is designed in accordance with the 2015 International Residential Code sections R502.11.1 and R802.10.2 and referenced standard ANSI/TPI 1.
  - 6) Recommend 2x6 strongbacks, on edge, spaced at 10-00-00 oc and fastened to each truss with 3-10d (0.131" X 3") nails. Strongbacks to be attached to walls at their outer ends or restrained by other means.



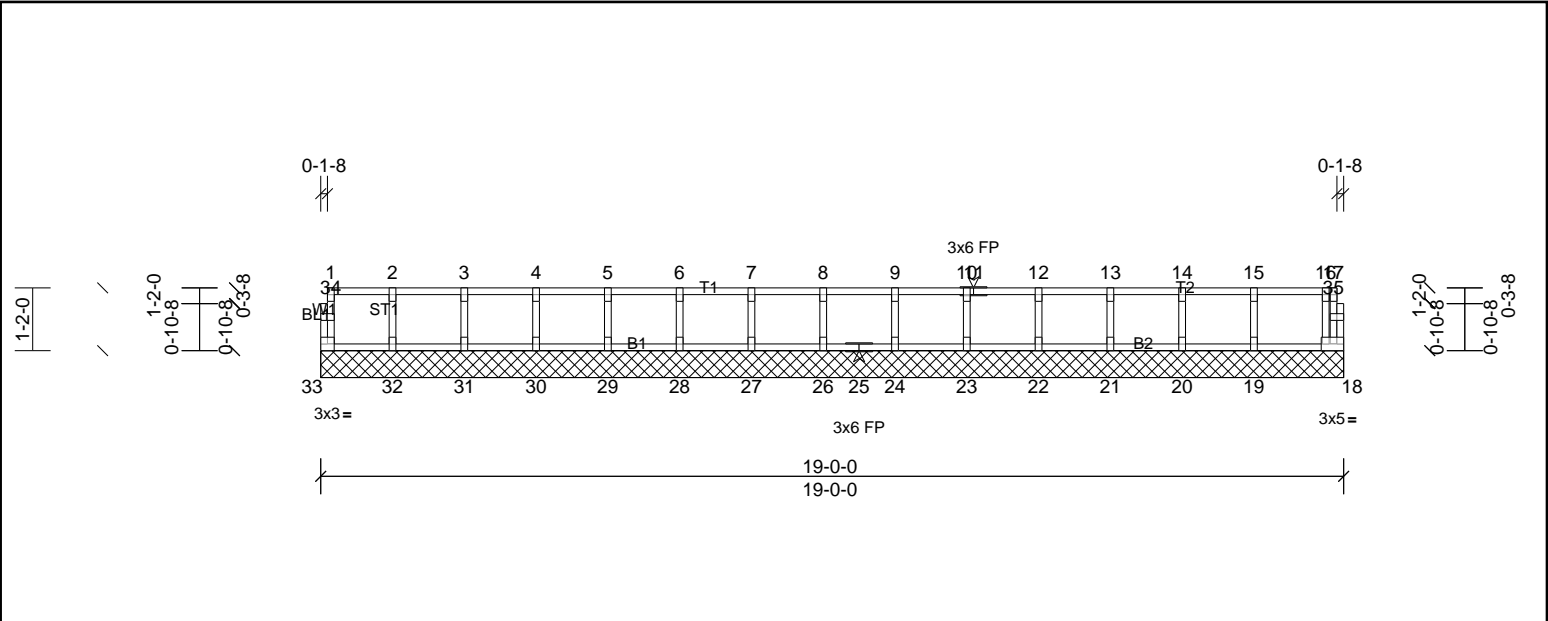
Job	Truss	Truss Type	Qty	Ply	MUNGO HOMES - TELFAIR C 2ND FLR
72503774	K201	Truss	1	1	Job Reference (optional)

UFP Mid Atlantic LLC, 5631 S. NC 62, Burlington, NC, Joy Perry

Run: 8.81 S Sep 13 2024 Print: 8.810 S Sep 13 2024 MiTek Industries, Inc. Fri Feb 07 12:57:47

Page: 1

ID:1vjDFRyPmFpgB?c\_sLBQ\_eyx75I-qQ?9Qyd0XDHQ6dKJIOMk8ZvmwslhaSQ0uSmPCNznXjY



<b>Loading</b>	(psf)	<b>Spacing</b>	2-0-0	<b>CSI</b>		<b>DEFL</b>	in	(loc)	l/defl	L/d	<b>PLATES</b>	<b>GRIP</b>
TCLL	40.0	Plate Grip DOL	1.00	TC	0.09	Vert(LL)	n/a	-	n/a	999	MT20	244/190
TCDL	10.0	Lumber DOL	1.00	BC	0.02	Vert(TL)	n/a	-	n/a	999		
BCLL	0.0	Rep Stress Incr	YES	WB	0.03	Horiz(TL)	0.00	18	n/a	n/a		
BCDL	5.0	Code	IRC2015/TPI2014	Matrix-R							Weight: 80 lb	FT = 20%F, 12%E

<b>LUMBER</b>		<b>BRACING</b>	
TOP CHORD	2x4 SP No.2(flat)	TOP CHORD	Structural wood sheathing directly applied or 6-0-0 oc purlins, except end verticals.
BOT CHORD	2x4 SP No.2(flat)	BOT CHORD	Rigid ceiling directly applied or 10-0-0 oc bracing.
WEBS	2x4 SP No.3(flat)		
OTHERS	2x4 SP No.3(flat)		

**REACTIONS** All bearings 19-0-0.

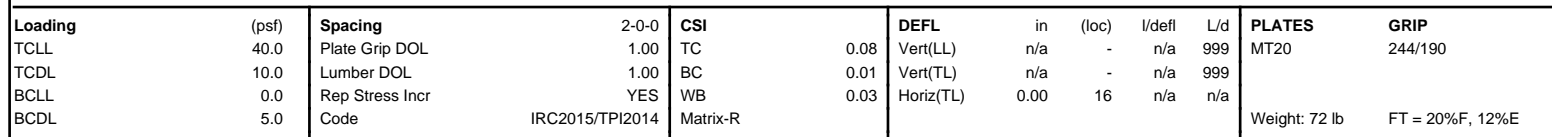
(lb) - Max Grav All reactions 250 (lb) or less at joint(s) 18, 19, 20, 21, 22, 23, 24, 26, 27, 28, 29, 30, 31, 32, 33

**FORCES** (lb) - Max. Comp./Max. Ten. - All forces 250 (lb) or less except when shown.

- NOTES**
- 1) All plates are 1.5x3 MT20 unless otherwise indicated.
  - 2) Gable requires continuous bottom chord bearing.
  - 3) Truss to be fully sheathed from one face or securely braced against lateral movement (i.e. diagonal web).
  - 4) Gable studs spaced at 1-4-0 oc.
  - 5) This truss is designed in accordance with the 2015 International Residential Code sections R502.11.1 and R802.10.2 and referenced standard ANSI/TPI 1.
  - 6) Recommend 2x6 strongbacks, on edge, spaced at 10-00-00 oc and fastened to each truss with 3-10d (0.131" X 3") nails. Strongbacks to be attached to walls at their outer ends or restrained by other means.



UFP Mid Atlantic LLC, 5631 S. NC 62, Burlington, NC, Joy Perry Run: 8.81 S Sep 13 2024 Print: 8.810 S Sep 13 2024 MiTek Industries, Inc. Fri Feb 07 12:57:47 Page: 1  
ID: vLVVcRqglwcs3ft\_AMX8Qxz1jdG-qQ?9Oyd0XDHQ6dKJlOMk8Zvm0sItaSR0uSmPcnZnXjY



<b>REACTIONS</b>	All bearings 17-0-12.
(lb) - Max Grav	All reactions 250 (lb) or less at joint(s) 16, 17, 18, 19, 20, 21, 23, 24, 25, 26, 27, 28, 29, 30
<b>FORCES</b>	(lb) - Max. Comp./Max. Ten. - All forces 250 (lb) or less except when shown.

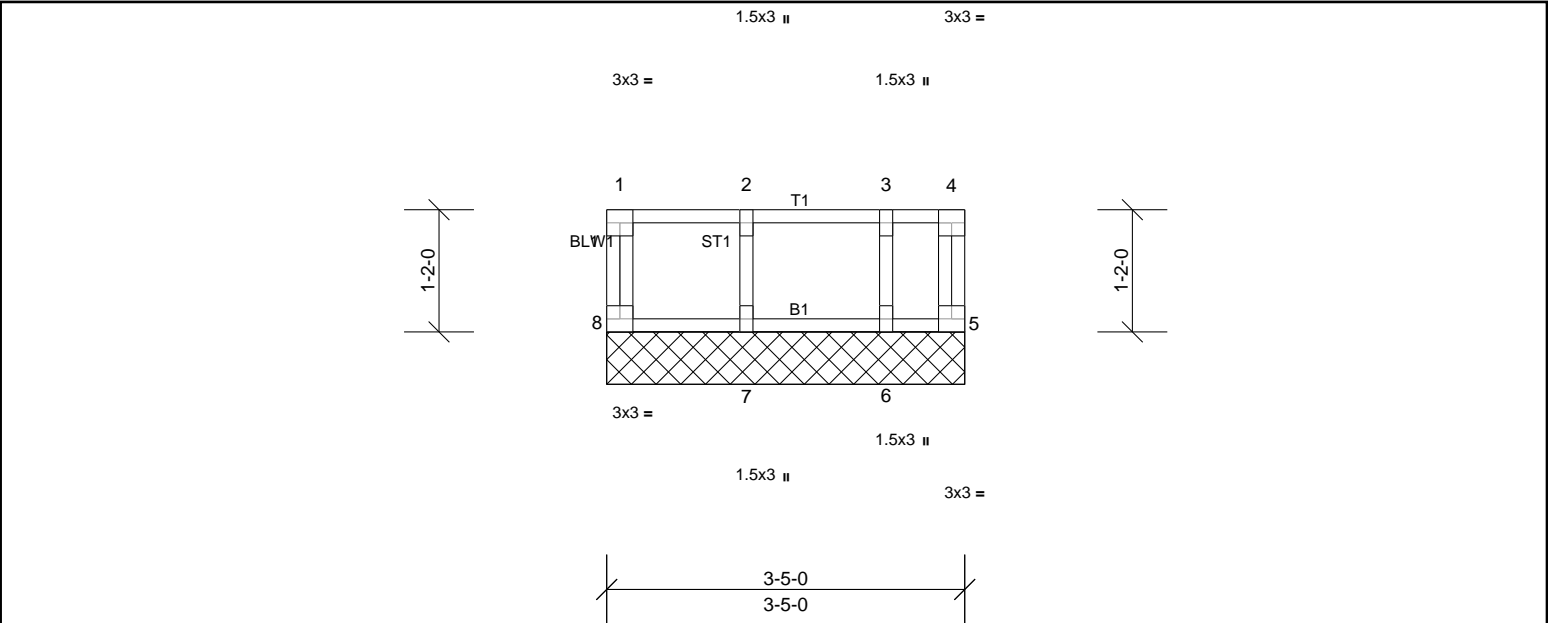
**NOTES**

- 1) Unbalanced floor live loads have been considered for this design.
- 2) All plates are 1.5x3 MT20 unless otherwise indicated.
- 3) Gable requires continuous bottom chord bearing.
- 4) Truss to be fully sheathed from one face or securely braced against lateral movement (i.e. diagonal web).
- 5) Gable studs spaced at 1-4-0 oc.
- 6) Bearing at joint(s) 16 considers parallel to grain value using ANSI/TPI 1 angle to grain formula. Building designer should verify capacity of bearing surface.
- 7) This truss is designed in accordance with the 2015 International Residential Code sections R502.11.1 and R802.10.2 and referenced standard ANSI/TPI 1.
- 8) Recommend 2x6 strongbacks, on edge, spaced at 10-00-00 oc and fastened to each truss with 3-10d (0.131" X 3") nails. Strongbacks to be attached to walls at their outer ends or restrained by other means.



This design is based upon parameters shown, and is for an individual building component to be installed and loaded vertically. Applicability of design parameters and proper incorporation of component is responsibility of the Building Designer. Building Designer shall verify all design information on this sheet for conformance with conditions and requirements of the specific building and governing codes and ordinances. Building Designer accepts responsibility for the correctness or accuracy of the design information as it may relate to a specific building. Certification is valid only when truss is fabricated by a UFPI plant. Bracing shown is for lateral support of truss members only and does not replace erection and permanent bracing. Refer to Building Component Safety Information (BCSI) for general guidance regarding storage, erection and bracing available from SBCA and Truss Plate Institute.

Job	Truss	Truss Type	Qty	Ply	MUNGO HOMES - TELFAIR C 2ND FLR
72503774	K203	Truss	1	1	Job Reference (optional)



Loading	(psf)	Spacing	2-0-0	CSI		DEFL	in	(loc)	I/defl	L/d	PLATES	GRIP
TCLL	40.0	Plate Grip DOL	1.00	TC	0.08	Vert(LL)	n/a	-	n/a	999	MT20	244/190
TCDL	10.0	Lumber DOL	1.00	BC	0.02	Vert(TL)	n/a	-	n/a	999		
BCLL	0.0	Rep Stress Incr	YES	WB	0.03	Horiz(TL)	0.00	5	n/a	n/a		
BCDL	5.0	Code	IRC2015/TPI2014	Matrix-R							Weight: 18 lb	FT = 20%F, 12%E

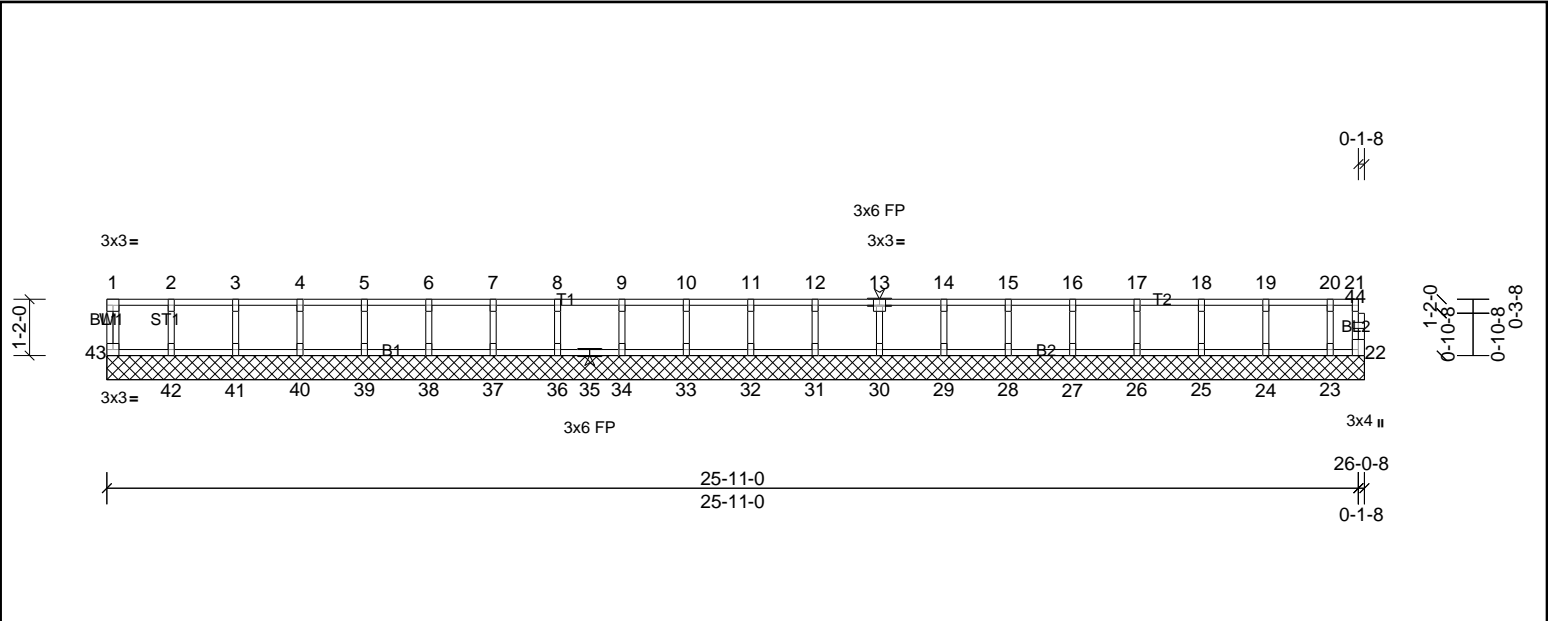
LUMBER		BRACING	
TOP CHORD	2x4 SP No.2(flat)	TOP CHORD	Structural wood sheathing directly applied or 3-5-0 oc purlins, except end verticals.
BOT CHORD	2x4 SP No.2(flat)	BOT CHORD	Rigid ceiling directly applied or 10-0-0 oc bracing.
WEBS	2x4 SP No.3(flat)		
OTHERS	2x4 SP No.3(flat)		

REACTIONS	All bearings 3-5-0. (lb) - Max Grav All reactions 250 (lb) or less at joint(s) 5, 6, 7, 8
FORCES	(lb) - Max. Comp./Max. Ten. - All forces 250 (lb) or less except when shown.

- NOTES**
- 1) Gable requires continuous bottom chord bearing.
  - 2) Truss to be fully sheathed from one face or securely braced against lateral movement (i.e. diagonal web).
  - 3) Gable studs spaced at 1-4-0 oc.
  - 4) This truss is designed in accordance with the 2015 International Residential Code sections R502.11.1 and R802.10.2 and referenced standard ANSI/TPI 1.
  - 5) Recommend 2x6 strongbacks, on edge, spaced at 10-00-00 oc and fastened to each truss with 3-10d (0.131" X 3") nails. Strongbacks to be attached to walls at their outer ends or restrained by other means.



Job	Truss	Truss Type	Qty	Ply	MUNGO HOMES - TELFAIR C 2ND FLR
72503774	K204	Truss	1	1	Job Reference (optional)



Scale = 1:47.9

Loading	(psf)	Spacing	2-0-0	CSI		DEFL	in	(loc)	I/defl	L/d	PLATES	GRIP
TCLL	40.0	Plate Grip DOL	1.00	TC	0.08	Vert(LL)	n/a	-	n/a	999	MT20	244/190
TCDL	10.0	Lumber DOL	1.00	BC	0.02	Vert(TL)	n/a	-	n/a	999		
BCLL	0.0	Rep Stress Incr	YES	WB	0.03	Horiz(TL)	0.00	22	n/a	n/a		
BCDL	5.0	Code	IRC2015/TPI2014	Matrix-R							Weight: 108 lb	FT = 20%F, 12%E

LUMBER	BRACING
TOP CHORD 2x4 SP No.2(flat)	TOP CHORD Structural wood sheathing directly applied or 6-0-0 oc purlins, except end verticals.
BOT CHORD 2x4 SP No.2(flat)	BOT CHORD Rigid ceiling directly applied or 10-0-0 oc bracing.
WEBS 2x4 SP No.3(flat)	
OTHERS 2x4 SP No.3(flat)	

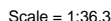
**REACTIONS** All bearings 26-0-8.  
(lb) - Max Grav All reactions 250 (lb) or less at joint(s) 22, 23, 24, 25, 26, 27, 28, 29, 30, 31, 32, 33, 34, 36, 37, 38, 39, 40, 41, 42, 43

**FORCES** (lb) - Max. Comp./Max. Ten. - All forces 250 (lb) or less except when shown.

- NOTES**
- 1) All plates are 1.5x3 MT20 unless otherwise indicated.
  - 2) Gable requires continuous bottom chord bearing.
  - 3) Truss to be fully sheathed from one face or securely braced against lateral movement (i.e. diagonal web).
  - 4) Gable studs spaced at 1-4-0 oc.
  - 5) Bearing at joint(s) 22 considers parallel to grain value using ANSI/TPI 1 angle to grain formula. Building designer should verify capacity of bearing surface.
  - 6) This truss is designed in accordance with the 2015 International Residential Code sections R502.11.1 and R802.10.2 and referenced standard ANSI/TPI 1.
  - 7) Recommend 2x6 strongbacks, on edge, spaced at 10-00-00 oc and fastened to each truss with 3-10d (0.131" X 3") nails. Strongbacks to be attached to walls at their outer ends or restrained by other means.



UFP Mid Atlantic LLC, 5631 S. NC 62, Burlington, NC, Joy Perry Run: 8.81 S Sep 13 2024 Print: 8.810 S Sep 13 2024 MiTek Industries, Inc. Fri Feb 07 12:57:47 Page: 1  
ID:a?g6?71yTv6SHVH?OIZqv2z8gqv-qQ?9Oy0XDHQ6dKJIOMk8Zvm0slvaSR0uSmPCnznXy



<b>Loading</b>	(psf)	<b>Spacing</b>	2-0-0	<b>CSI</b>		<b>DEFL</b>	in	(loc)	I/defl	L/d	<b>PLATES</b>	<b>GRIP</b>
TCLL	40.0	Plate Grip DOL	1.00	TC	0.08	Vert(LL)	n/a	-	n/a	999	MT20	244/190
TCDL	10.0	Lumber DOL	1.00	BC	0.01	Vert(CT)	n/a	-	n/a	999		
BCLL	0.0	Rep Stress Incr	YES	WB	0.03	Horz(CT)	0.00	18	n/a	n/a		
BCDL	5.0	Code	IRC2015/TPI2014	Matrix-R							Weight: 77 lb	FT = 20%F, 12%E

**REACTIONS** All bearings 18-3-8.  
(lb) - Max Grav All reactions 250 (lb) or less at joint(s) 18, 19, 20, 21, 22, 24, 25, 26, 27, 28, 29, 30, 31, 32, 33

**FORCES** (lb) - Max. Comp./Max. Ten. - All forces 250 (lb) or less except when shown.

- 1) All plates are 1.5x3 MT20 unless otherwise indicated.
- 2) Gable requires continuous bottom chord bearing.
- 3) Truss to be fully sheathed from one face or securely braced against lateral movement (i.e. diagonal web).
- 4) Gable studs spaced at 1-4-0 oc.
- 5) This truss is designed in accordance with the 2015 International Residential Code sections R502.11.1 and R802.10.2 and referenced standard ANSI/TPI 1.
- 6) Recommend 2x6 strongbacks, on edge, spaced at 10-00-00 oc and fastened to each truss with 3-10d (0.131" X 3") nails. Strongbacks to be attached to walls at their outer ends or restrained by other means.
- 7) CAUTION, Do not erect truss backwards.

TOP CHORD	Structural wood sheathing directly applied or 6-0-0 oc purlins, except end verticals.
BOT CHORD	Rigid ceiling directly applied or 10-0-0 oc bracing.



This design is based upon parameters shown, and is for an individual building component to be installed and loaded vertically. Applicability of design parameters and proper incorporation of component is responsibility of the Building Designer. Building Designer shall verify all design information on this sheet for conformance with conditions and requirements of the specific building and governing codes and ordinances. Building Designer accepts responsibility for the correctness or accuracy of the design information as it may relate to a specific building. Certification is valid only when truss is fabricated by a UFPI plant. Bracing shown is for lateral support of truss members only and does not replace erection and permanent bracing. Refer to Building Component Safety Information (BCSI) for general guidance regarding storage, erection and bracing available from SBCE and Truss Plate Institute.

