

AS-BUILT IMPROVEMENTS FOR
MATTAMY HOMES
207 KINDNESS DRIVE
LOT 75, SEAGRASS LANDING, PHASE 1
UPPER LITTLE RIVER TOWNSHIP, HARNETT COUNTY, NORTH CAROLINA

LEGEND

△	AIR CONDITIONER	INV.	INVERT
BC	BACK OF CURB	IPS	IRON PIPE SET
BFP	BACK FLOW PREVENTER	IRS	IRON ROD SET
○	CLEANOUT	○	LIGHT POLE
■	CURB INLET	○	MAGNETIC NAIL SET
DHS	DRILL HOLE SET	MNS	MANHOLE SANITARY SEWER
ECM	EXISTING CONCRETE MONUMENT	○	MANHOLE STORM SEWER
EDH	EXISTING DRILL HOLE	OHW	OVERHEAD WIRES
EIS	EXISTING IRON STAKE	PKS	PK NAIL SET
EIP	EXISTING IRON PIPE	PNS	POINT NOT SET
EM	ELECTRIC METER	RRS	RAIL ROAD SPIKE
EPK	EXISTING PK NAIL	○	TELEPHONE PEDESTAL
ES	ELECTRIC STUB	○	TRANSFORMER
FL	FLARED END SECTION	○	CABLE TV PEDESTAL
FM	FIRE HYDRANT	○	UTILITY POLE
FO	FIBER OPTIC PEDESTAL	○	WATER METER
GM	GUY	○	WATER VALVE
○		○	YARD INLET
○		○	FIELD MEASUREMENT
○		○	REVISION TRIANGLE

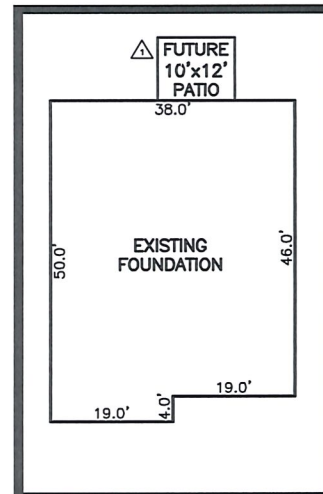
B.M. 2025, PG. 440-444

N/E L. EVANS ET AL
PIN: 0528-55-0210-000
D.B. 914, PG. 535

N/E CAMERON
PIN: 0528-44-9941-000
NO REFERENCES

75
32,944 S.F.
0.760 AC.

76



INSET SCALE: 1' = 30'

SETBACK INFO

FRONT: 35'
REAR: 25'
SIDES: 10'
CORNER SIDE: 20'

10'x70'
SIGHT
DISTANCE
TRIANGLE

QUEST COURT
50' PUBLIC R/W
& UTILITY EASEMENT

NUM	RADIUS	ARC	CHORD	CHORD BRG	DELTA
C1	25.00'	35.79'	32.81'	N 81°36'26" E	82°00'59"
C2	335.00'	125.24'	124.51'	S 68°05'42" E	21°25'14"
C3	285.00'	49.83'	49.77'	S 73°47'46" E	110°01'05"

REFERENCES:

B.M. 2025, PG. 440-444



SCALE: 1" = 40'

NOTES

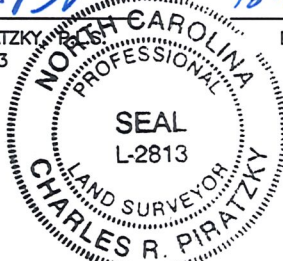
- THIS SURVEY SUBJECT TO ANY FACTS THAT MAY BE DISCLOSED BY A FULL AND ACCURATE TITLE SEARCH.
- THIS MAP MAY NOT BE A CERTIFIED SURVEY AND HAS NOT BEEN REVIEWED BY A LOCAL GOVERNMENT AGENCY FOR COMPLIANCE WITH ANY APPLICABLE LAND DEVELOPMENT REGULATIONS AND HAS NOT BEEN REVIEWED FOR COMPLIANCE WITH RECORDING REQUIREMENTS FOR PLATS.

WAKE COUNTY, NORTH CAROLINA

I CERTIFY THAT THIS MAP WAS DRAWN UNDER MY SUPERVISION FROM FIELDWORK DONE UNDER MY SUPERVISION; THAT THE IMPROVEMENTS LIE FULLY UPON THE LOT UNLESS OTHERWISE SHOWN AND THAT THE PROPERTY SHOWN IS AN EXISTING PARCEL OR PARCELS OF LAND.

CHARLES R. PIRATZKY
L-2813

DATE



△ PATIO

REV1: OCT. 24, 2025
DATE: OCT. 21, 2025

Q:\FieldLoc\SEAGRASS75FDN.txt

RWK, PA
ENGINEERING ~ SURVEYING
CORPORATE LICENSE: C-1771
101 W. MAIN ST., SUITE 202
GARNER, NC 27529
PHONE (919) 779-4854
FAX (919) 779-4056

0:\SEAGRASS\SEGR75\SEGR 75.DWG