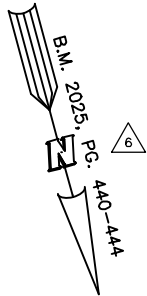
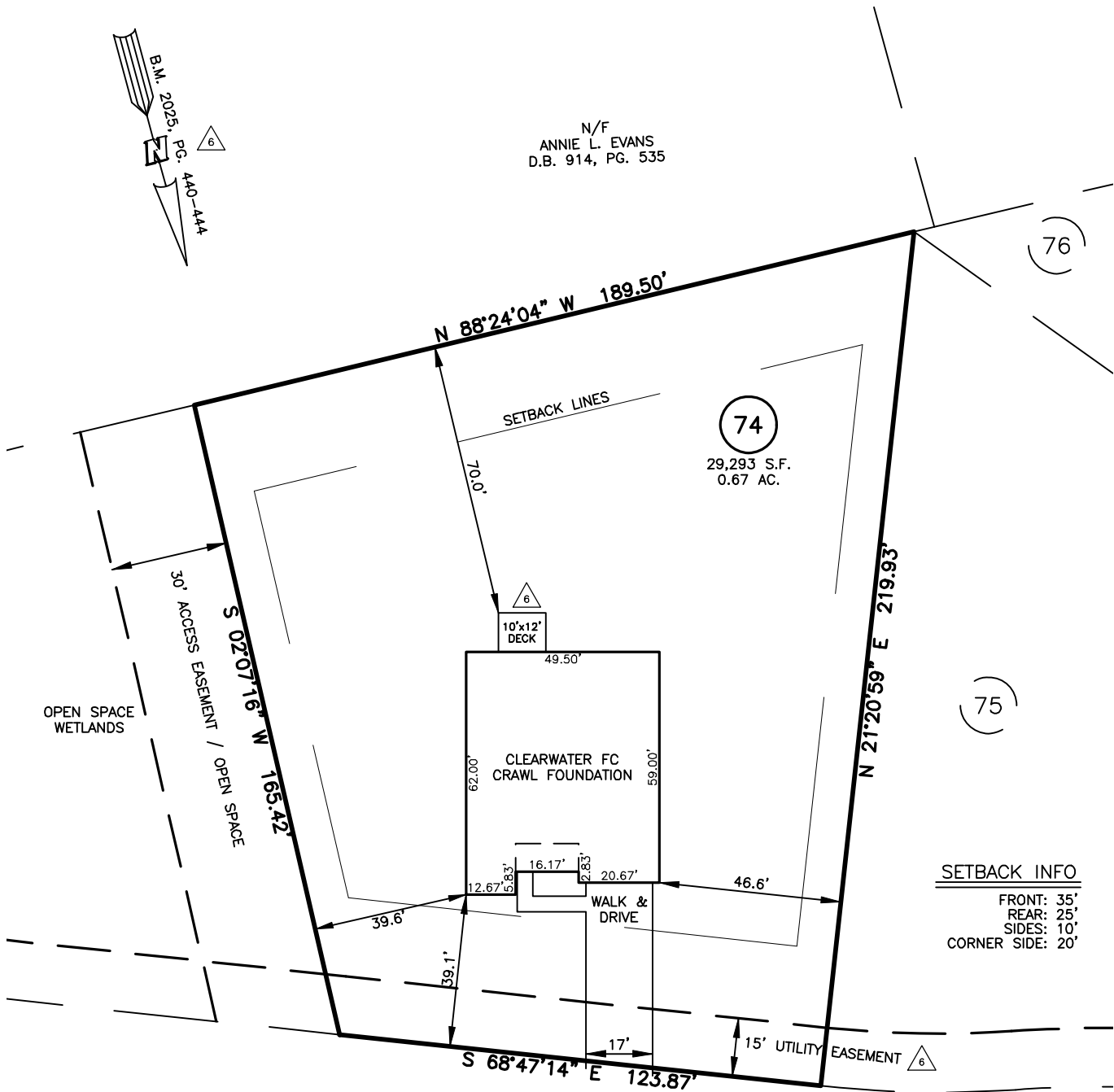


SITE PLAN FOR  
**MATTAMY HOMES**  
175 KINDNESS DRIVE  
LOT 74, SEAGRASS LANDING, PHASE 1  
UPPER LITTLE RIVER TOWNSHIP, HARNETT COUNTY, NORTH CAROLINA



N/F  
ANNIE L. EVANS  
D.B. 914, PG. 535



SETBACK INFO

FRONT:	35'
REAR:	25'
SIDES:	10'
CORNER SIDE:	20'

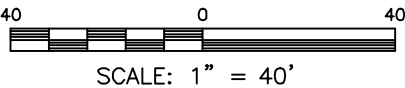
KINDNESS DR  
50' PUBLIC R/W &  
UTILITY EASEMENT

LEGEND

- |     |                            |       |                        |
|-----|----------------------------|-------|------------------------|
| △   | AIR CONDITIONER            | INV.  | INVERT                 |
| BC  | BACK OF CURB               | IPS   | IRON PIPE SET          |
| BFP | BACK FLOW PREVENTER        | IRS   | IRON ROD SET           |
| ○   | CLEANOUT                   | LT    | LIGHT POLE             |
| ■   | CURB INLET                 | MNS   | MAGNETIC NAIL SET      |
| DHS | DRILL HOLE SET             | ○     | MANHOLE SANITARY SEWER |
| ECM | EXISTING CONCRETE MONUMENT | ⊗     | MANHOLE STORM SEWER    |
| EDH | EXISTING DRILL HOLE        | OHW   | OVERHEAD WIRES         |
| EIS | EXISTING IRON STAKE        | PKS   | PK NAIL SET            |
| EIP | EXISTING IRON PIPE         | PNS   | POINT NOT SET          |
| EM  | ELECTRIC METER             | RRS   | RAIL ROAD SPIKE        |
| EPK | EXISTING PK NAIL           | ⊞     | TELEPHONE PEDESTAL     |
| ES  | ELECTRIC STUB              | TRANS | TRANSFORMER            |
| FL  | FLARED END SECTION         | UT    | UTILITY POLE           |
| FH  | FIRE HYDRANT               | WM    | WATER METER            |
| FOP | FIBER OPTIC PEDESTAL       | WV    | WATER VALVE            |
| GM  | GAS METER                  | YI    | YARD INLET             |
| GUY | GUY                        | ( )   | FIELD MEASUREMENT      |
| △   | REVISION TRIANGLE          |       |                        |

IMPERVIOUS SURFACES	S.F.
HOUSE	2,920
WALK & DRIVE	890
PORCH	120
TOTAL	3,930
MAX IMPERVIOUS	7,200

△ REFERENCES:  
B.M. 2025, PG. 440-444



THIS IS A SITE PLAN AS DEFINED BY G.S. 160D-102 AND IS NOT INTENDED TO BE ATTACHED TO ANY INSTRUMENT RECORDED IN THE REGISTER OF DEEDS OFFICE

△ UPDATED TO RERECORDED MAP

**SITE PLAN**  
NOT FOR RECORDATION,  
CONVEYANCE OR SALES

REV CODE: 1.FLIP, 2.PLAN, 3.ROTATE, 4.MOVE, 5.SS  
6.SEVERAL OF ABOVE, 7.LAND FEATURE, 8. OTHER

REV6: SEPT. 25, 2025(8)  
REV5: SEPT. 22, 2025(2)  
DATE: JUNE 18, 2025

F.B. \_\_\_\_\_

**RWK, PA**  
**ENGINEERING ~ SURVEYING**  
CORPORATE LICENSE: C-1771  
101 W. MAIN ST., SUITE 202  
GARNER, NC 27529  
PHONE (919) 779-4854  
FAX (919) 779-4056