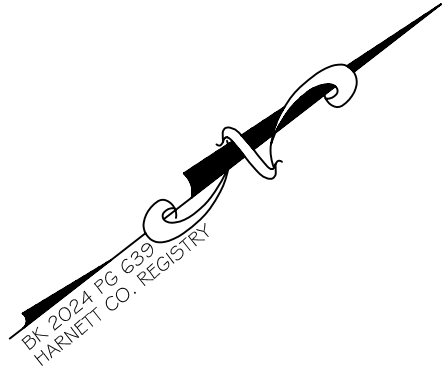


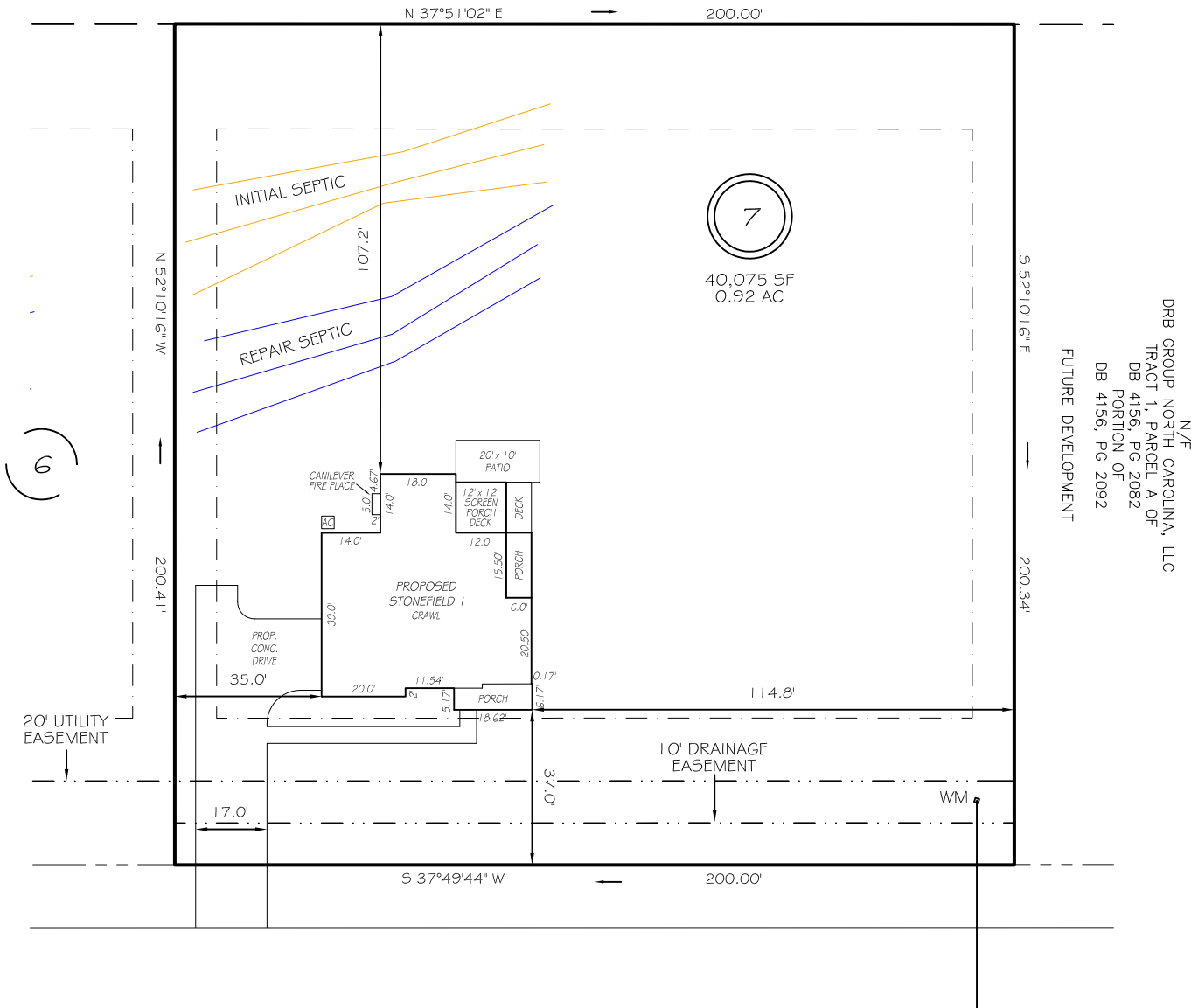
I, MICHAEL P. GRIFFIN, certify that under my direction and supervision this map was drawn from an actual field survey; that the error of closure of the survey as calculated by coordinates is 1: 10,000+; that the area shown hereon was calculated by coordinates. Dashed lines shown hereon were not surveyed.

Witness my hand and seal this day of MONTH 2025.



3

N/F
CHRISTOPHER H. RABA & WIFE,
SUSAN D. RABA
PARCEL 3 OF
DB 2243, PG 680
PB 2010, PG 409



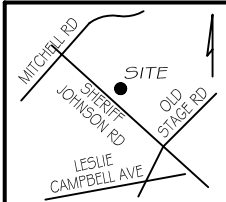
ZONING: RA-30
SETBACKS
FRONT 35'
REAR 25'
SIDE 10'
CORNER SIDE 20'



GRAPHIC SCALE
1"=40'

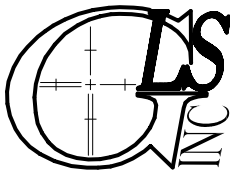
LEGEND

EIP	EXISTING IRON PIPE	FES	FLARED END SECTION
IPS	IRON PIPE SET	WM	WATER METER
R/W	RIGHT OF WAY	CO	CLEAN OUT
N/F	NOW OR FORMERLY	PP	POWER POLE
EIS	EXISTING IRON STAKE	CB	CATCH BASIN



REVISION: MOD DW 7/1/25
REVISION: MOD DW 6/30/25

PRELIMINARY
NOT FOR RECORDATION,
SALES OR CONVEYANCE



GRIFFIN LAND SURVEYING, INC.

P. O. BOX 148
FUQUAY-VARINA, NC 27526
(919) - 567 - 1963

FIRM LIC.# C-1345

PLOT PLAN
FOR

DRB HOMES

BLAKE POND SUBDIVISION

LOT 7

243 BRONZE LEAF DRIVE

LILLINGTON, N.C.

HARNETT COUNTY NEILL'S CREEK & GROVE TOWNSHIP

DRAWN BY KDF

DATE 6/26/25

CHECKED BY MPG

SCALE 1" = 40'