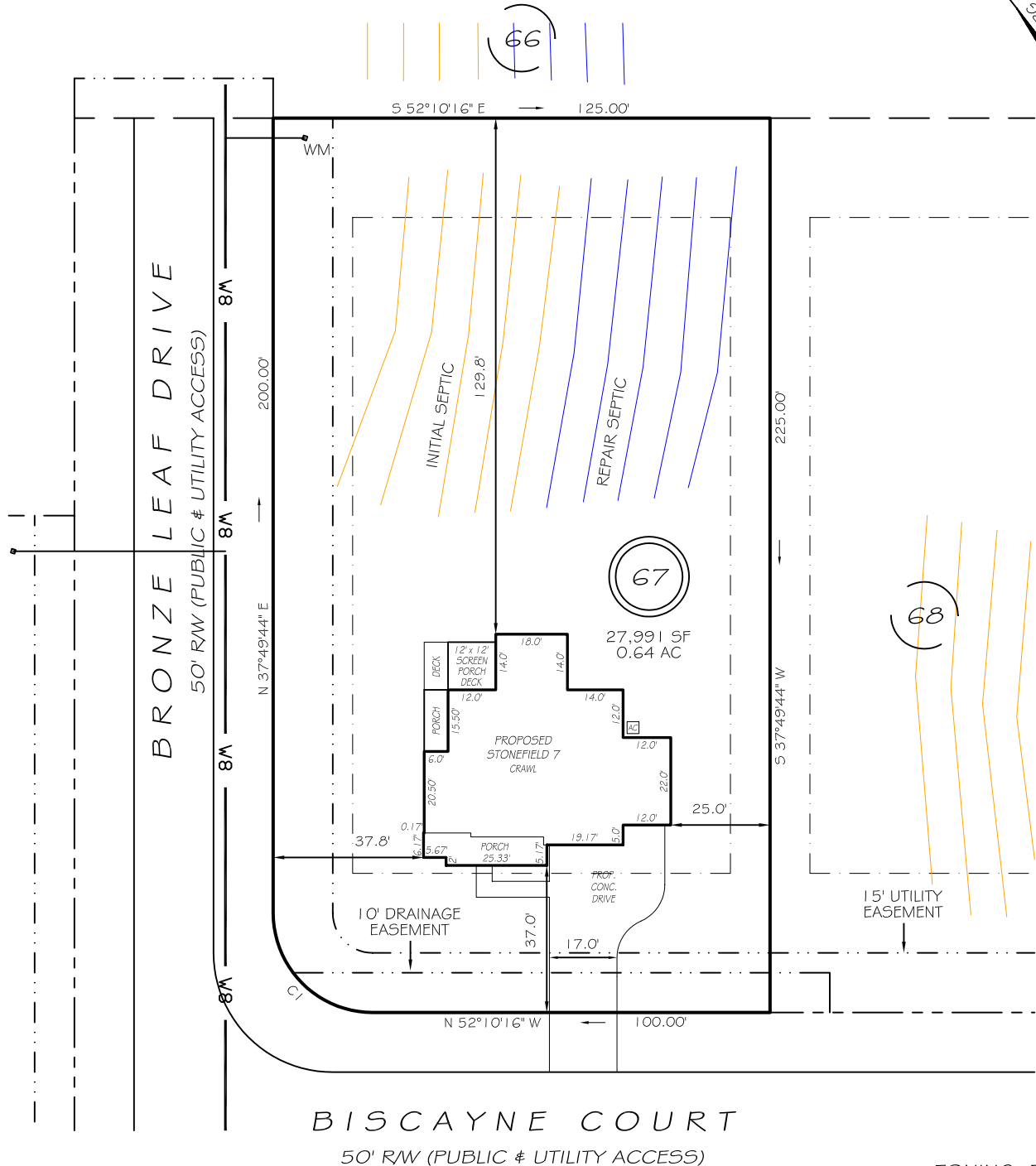


I, MICHAEL P. GRIFFIN, certify that under my direction and supervision this map was drawn from an actual field survey; that the error of closure of the survey as calculated by coordinates is 1: 10,000+ ; that the area shown hereon was calculated by coordinates. Dashed lines shown hereon were not surveyed.

Witness my hand and seal this day of MONTH 2025.

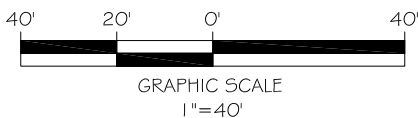
N/F
DRB GROUP NORTH CAROLINA, LLC
TRACT 1, PARCEL A OF
DB 4156, PG 2082
PORTION OF
DB 4156, PG 2092

FUTURE DEVELOPMENT



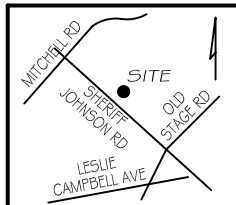
BR 2024 PG 639
HARNETT CO. REGISTRY

ZONING: RA-30
SETBACKS
FRONT 35'
REAR 25'
SIDE 10'
CORNER SIDE 20'



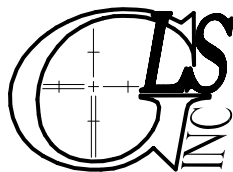
LEGEND

EIP	EXISTING IRON PIPE	FES	FLARED END SECTION
IPS	IRON PIPE SET	WM	WATER METER
R/W	RIGHT OF WAY	CO	CLEAN OUT
N/F	NOW OR FORMERLY	PP	POWER POLE
EIS	EXISTING IRON STAKE	CB	CATCH BASIN



CI R=25.00' L=39.27' 507°10'16"E 35.36'

PRELIMINARY
NOT FOR RECORDATION,
SALES OR CONVEYANCE



GRIFFIN LAND SURVEYING, INC.

P. O. BOX 148
FUQUAY-VARINA, NC 27526
(919) - 567 - 1963

FIRM LIC.# C-1345

PLOT PLAN
FOR

DRB HOMES

BLAKE POND SUBDIVISION

LOT 67

19 BISCAYNE COURT

LILLINGTON, N.C.

HARNETT COUNTY NEILL'S CREEK & GROVE TOWNSHIP

DRAWN BY KDF

DATE 6/4/25

CHECKED BY MPG

SCALE 1" = 40'