

PRELIMINARY PLOT PLAN FOR

MUNGO HOMES

LOT 64, LEANDER LEE PRESERVE SUBDIVISION

192 HARRIETTE COURT

REF: P.B. 2025, PG. 267

LILLINGTON TOWNSHIP

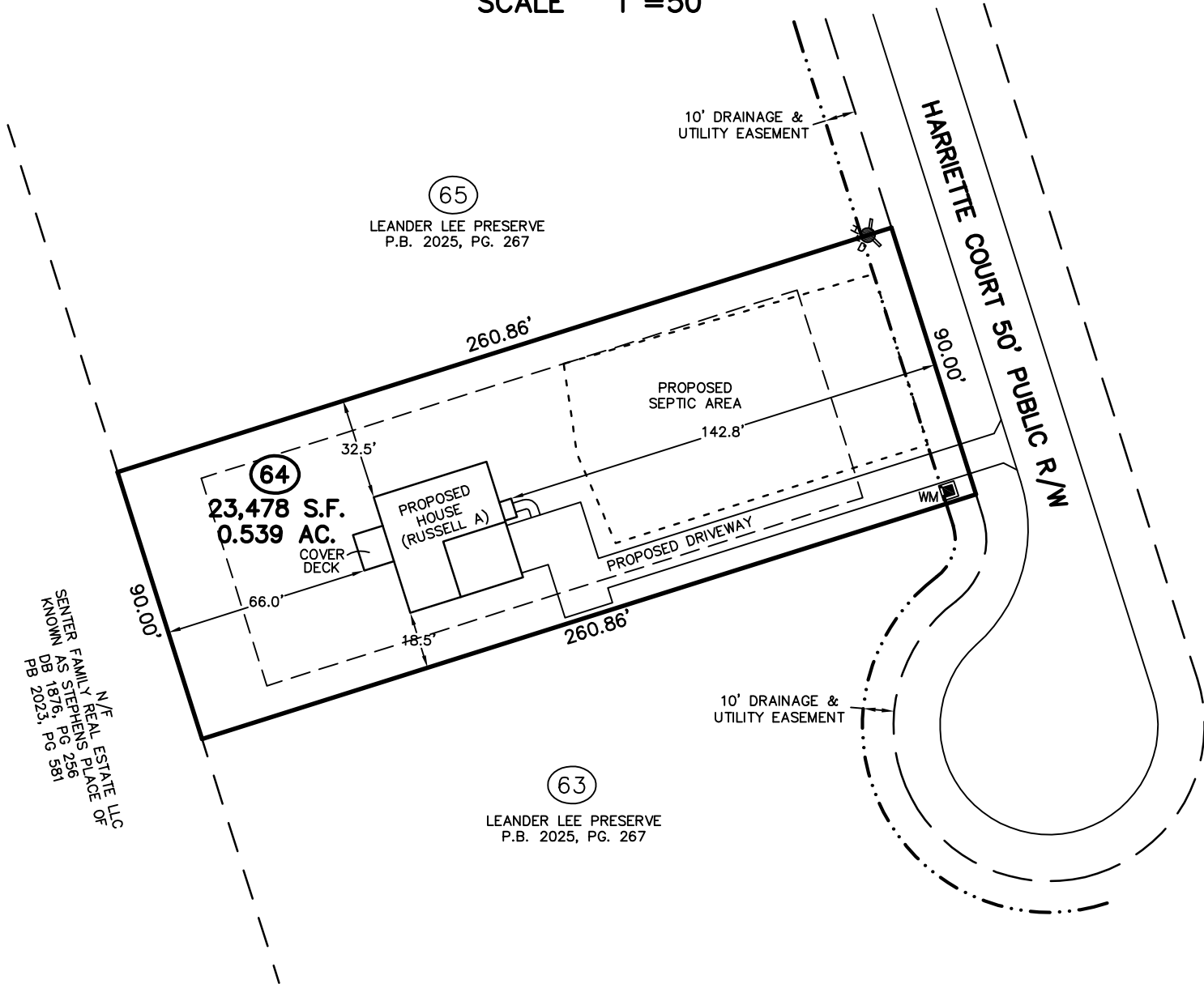
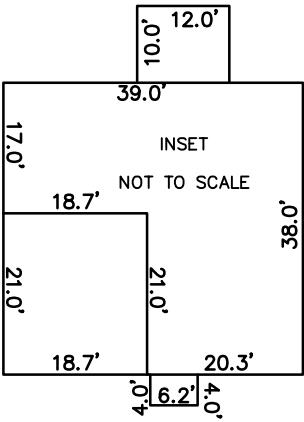
HARNETT COUNTY, NORTH CAROLINA

MAY 12, 2025

ZONED RA-20R



SCALE 1"=50'

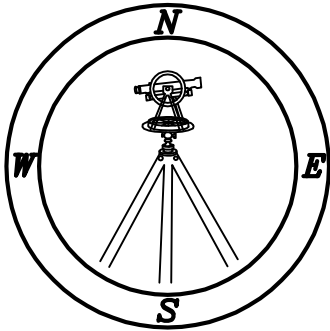


IMPERVIOUS SURFACE TABLE

HOUSE	1,507 S.F.
COVER DECK	120 S.F.
DRIVEWAY	1,906 S.F.
SIDEWALKS	30 S.F.
MISC/UTILITIES	9 S.F.
TOTAL IMPERVIOUS AREA	3,572 S.F.
TOTAL LOT AREA	23,478 S.F.
PERCENTAGE OF IMPERVIOUS AREA	15.21 %

TOTAL CONCRETE & LANDSCAPE	
CONCRETE	2,098 S.F.
LANDSCAPE	21,094 S.F.

THIS SURVEYOR DOES NOT
WARRANTY THE ACCURACY
OF ARCHITECTURAL DIMENSIONS.
THEY ARE TO BE VERIFIED BY
THE CONTRACTOR.



CMP

Professional Land Surveyors
C-1525

333 S. White Street
Post Office Box 1253
Wake Forest, N.C. 27588
(919)556-3148

NOTES:
-THIS PLAN DOES NOT REFLECT AN
ACTUAL SURVEY. IT IS A PRELIMINARY
PLAN AND SHOULD BE USED FOR ITS
INTENDED PURPOSE ONLY.
-NOT FOR RECORDATION, CONVEYANCES,
OR SALES.