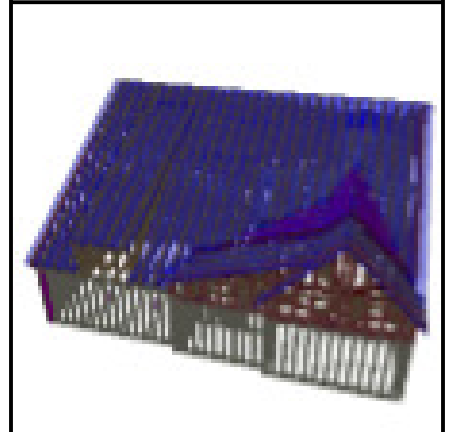


**Connection Notes:**

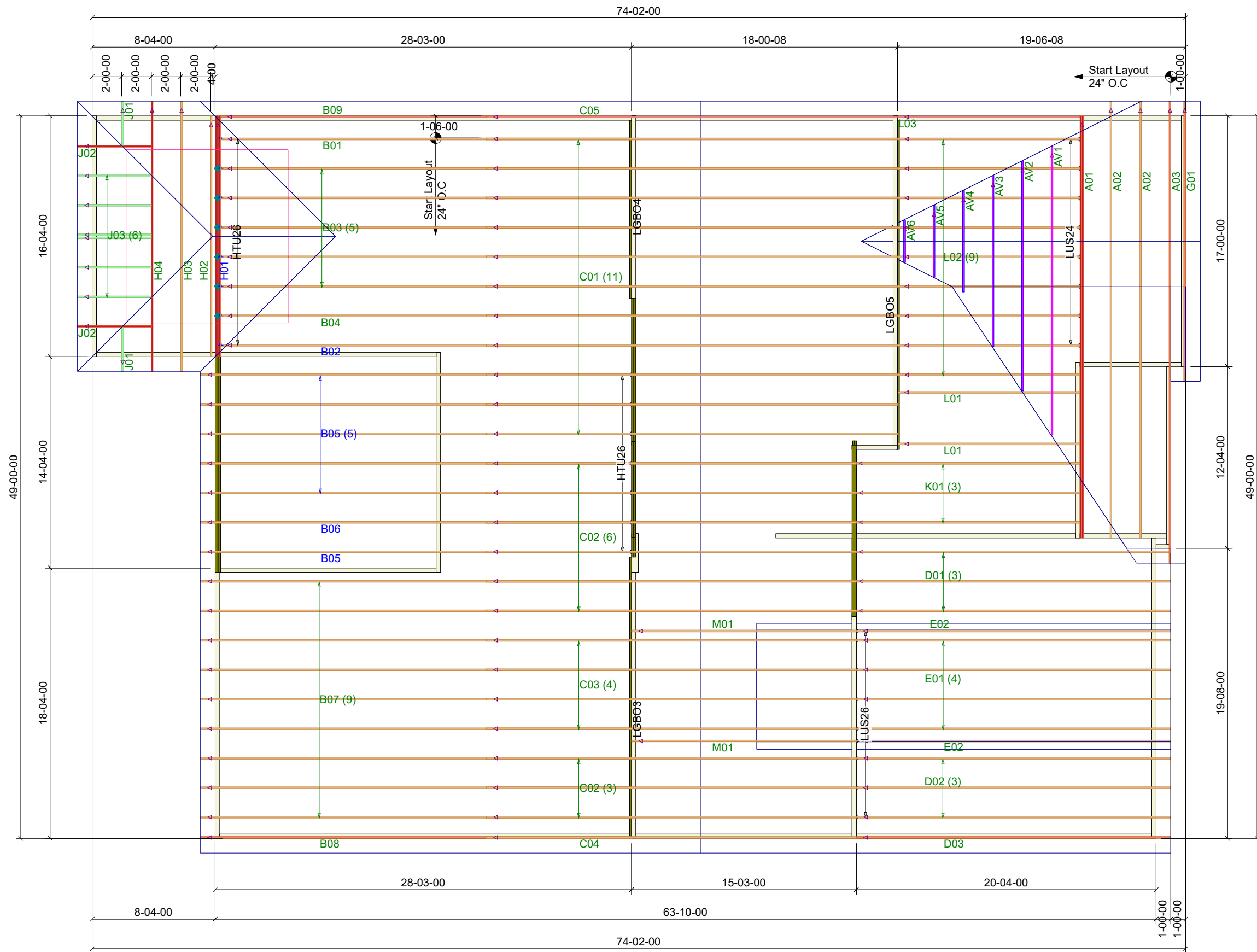
- All hangers are to be Simpson or equivalent U.N.O.
- Use Manufacturer's specifications for all hanger connections U.N.O.
- Use 10d (0.148") x 1 1/2" Nails in hanger connections to single ply roof girder trusses.

△◀▶▷ LEFT END OF TRUSS AS SHOWN ON TRUSS  
DETAIL DRAWINGS ARE INDICATED BY TRIANGLE ICONS.



TRI POINTE HOMES						
346 SERENITY						
WAKE	NC	GARAGE:	LH			
5921-09		ELEVATION:	A			
TRAY CEILING @ PRIMARY SUITE, COVERED OUTDOOR LIVING						
				APPWRIGHT #		4678258
				CODE:	IRC 2018	
				LOADING:		
				T.C.L.L.	20 PSF	
DESIGNED BY:	JHM	T.C.D.L.	10 PSF			
LAUNDRY:	ROOF	B.C.L.L.	PER CODE			
L/O DATE:	9/5/2025	B.C.D.L.	10 PSF			
REVISIONS:		WIND:				
REV 1:	-	SPEED:	115 MPH			
REV 2:	-	EXPOSURE:	B			

Summation of limited excerpts of the Code, ANSI/TPI 1-2014, and BCSI, and associated commentary, are provided within the truss submittal package in the Builders FirstSource Component Truss Responsibility and Liability Disclosure. These critical excerpts include, among other elements, critical safety information as well as specific Scope-of-Work assignments (and limitations of the same) for the Owner, Contractor, Building Designer, Truss Designer, and Truss Manufacturer. It is essential that ALL parties to the design and use of the trusses review and become familiar with the information provided in the Builders FirstSource Component Truss Responsibility and Liability Disclosure, as well as the referenced sources, prior to performing work on the associated project.



## DIMENSIONS TO FRAME

Truss Connector Total List		
Manuf	Product	Qty
Simpson	HTU26	7
Simpson	LUS24	8
Simpson	LUS26	9
Connector Summary		
Qty	Manuf	Product
8	Simpson	HTU26