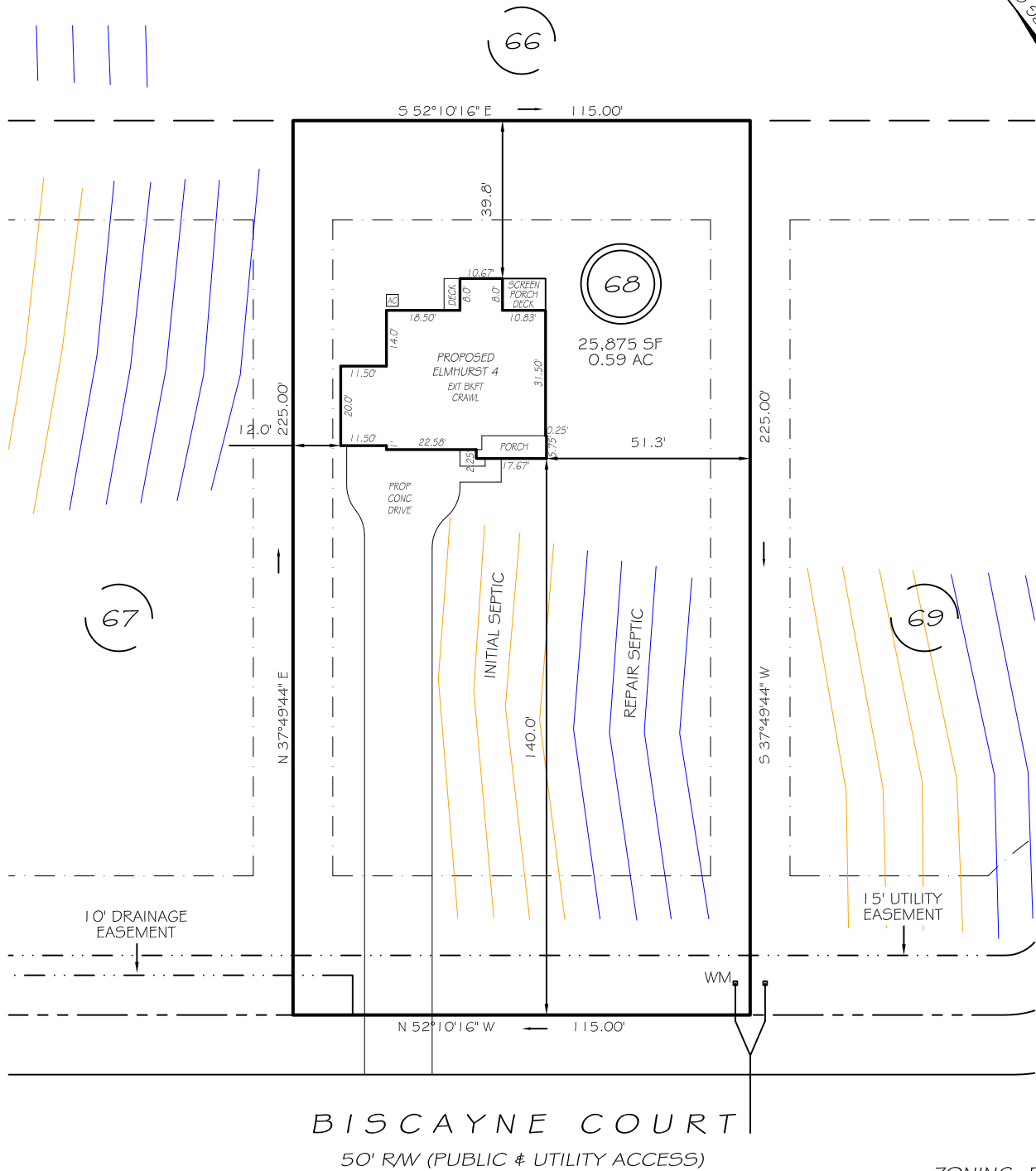


I, MICHAEL P. GRIFFIN, certify that under my direction and supervision this map was drawn from an actual field survey; that the error of closure of the survey as calculated by coordinates is 1: 10,000+; that the area shown hereon was calculated by coordinates. Dashed lines shown hereon were not surveyed.

Witness my hand and seal this day of MONTH 2025.

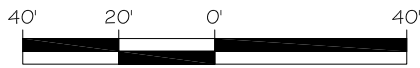
N/F
DRB GROUP NORTH CAROLINA, LLC
TRACT 1, PARCEL A OF
DB 4156, PG 2082
PORTION OF
DB 4156, PG 2092
FUTURE DEVELOPMENT



BISCAYNE COURT
50' R/W (PUBLIC & UTILITY ACCESS)

ZONING: RA-30
SETBACKS

FRONT 35'
REAR 25'
SIDE 10'
CORNER SIDE 20'

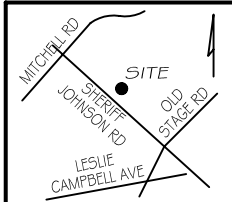


GRAPHIC SCALE
1"=40'

LEGEND

PRELIMINARY
NOT FOR RECORDATION,
SALES OR CONVEYANCE

EIP	EXISTING IRON PIPE	FES	FLARED END SECTION
IPS	IRON PIPE SET	WM	WATER METER
R/W	RIGHT OF WAY	CO	CLEAN OUT
N/F	NOW OR FORMERLY	PP	POWER POLE
EIS	EXISTING IRON STAKE	CB	CATCH BASIN



GRIFFIN LAND SURVEYING, INC.

P. O. BOX 148
FUQUAY-VARINA, NC 27526
(919) - 567 - 1963

FIRM LIC.# C-1345

PLOT PLAN
FOR

DRB HOMES

BLAKE POND SUBDIVISION

LOT 68

41 BISCAYNE COURT

LILLINGTON, N.C.

HARNETT COUNTY NEILL'S CREEK & GROVE TOWNSHIP

DRAWN BY **KDF**

DATE **5/30/25**

CHECKED BY **MPG**

SCALE **1" = 40'**