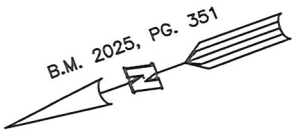


AS-BUILT IMPROVEMENTS FOR
MATTAMY HOMES, LLC.
109 MENDENHALL DRIVE
LOT 51, RIVERFALL SUBDIVISION PHASE TWO
BLACK RIVER TOWNSHIP, HARNETT COUNTY, NORTH CAROLINA



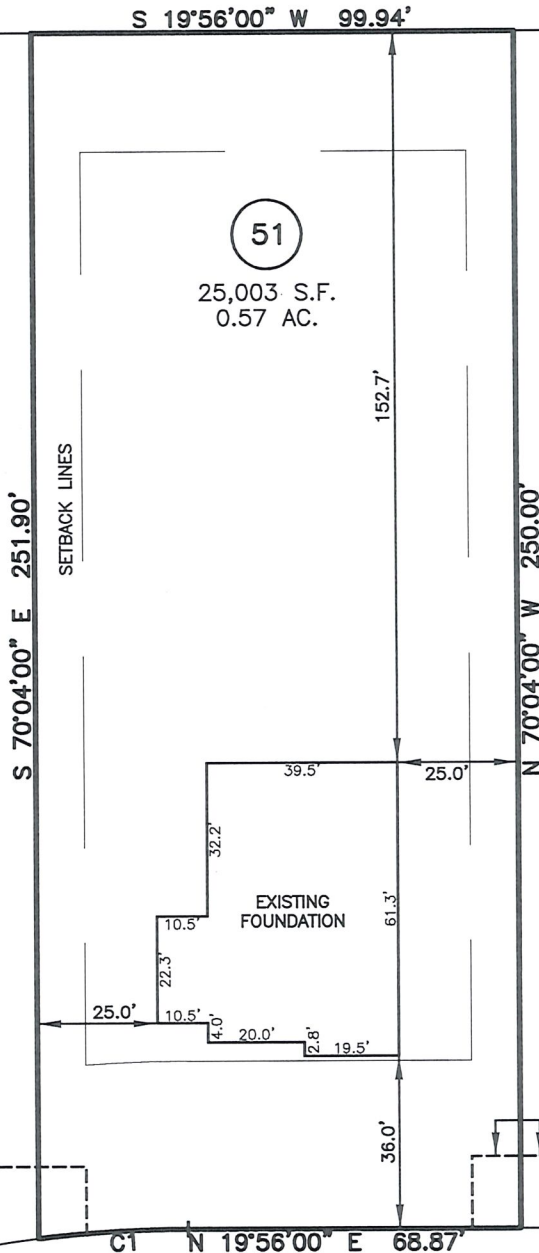
OPEN SPACE

LEGEND

- △ AIR CONDITIONER
- BC BACK OF CURB
- BFP BACK FLOW PREVENTER
- CLEANOUT
- CURB INLET
- DHS DRILL HOLE SET
- ECM EXISTING CONCRETE MONUMENT
- EDH EXISTING DRILL HOLE
- EIS EXISTING IRON STAKE
- EIP EXISTING IRON PIPE
- EM ELECTRIC METER
- EPK EXISTING PK NAIL
- ES ELECTRIC STUB
- ▽ FLARED END SECTION
- ⬮ FIRE HYDRANT
- ⬮ FIBER OPTIC PEDESTAL
- GM GAS METER
- ⬮ GUY
- INV INVERT
- IPS IRON PIPE SET
- IRS IRON ROD SET
- LIGHT POLE
- MNS MAGNETIC NAIL SET
- ⊙ MANHOLE SANITARY SEWER
- ⊙ MANHOLE STORM SEWER
- OHV OVERHEAD WIRES
- PKS PK NAIL SET
- PNS POINT NOT SET
- RRS RAIL ROAD SPIKE
- ⬮ TELEPHONE PEDESTAL
- ⬮ TRANSFORMER
- ⬮ CABLE TV PEDESTAL
- ⬮ UTILITY POLE
- ⬮ WATER METER
- ⬮ WATER VALVE
- ⬮ YARD INLET
- () FIELD MEASUREMENT

SETBACK INFO

FRONT: 35'
REAR: 25'
SIDES: 10'



MENDENHALL DRIVE
50' PUBLIC R/W

NUM	RADIUS	ARC	DELTA	CHORD BRG	CHORD
C1	255.00'	31.15'	6°59'58"	N 16°26'01" E	31.13'

THIS AS-BUILT IS
FOR CODE COMPLIANCE.
NOT FOR SALES OR
CONVEYANCE

WAKE COUNTY, NORTH CAROLINA

I CERTIFY THAT THIS MAP WAS DRAWN UNDER MY
SUPERVISION FROM FIELDWORK DONE UNDER
MY SUPERVISION; THAT THE IMPROVEMENTS LIE
WHOLLY UPON THE LOT AND THAT THE PROPERTY
SHOWN IS AN EXISTING PARCEL OR PARCELS OF
LAND.

CHARLES R. PIRATZKY
L-2813



DATE

DATE: JULY 25, 2025

Q:\FieldLoc\RVFL 34 51 53 FDN.txt

REFERENCES:

B.M. 2025, P. 351



NOTES

SCALE: 1" = 40

- THIS SURVEY SUBJECT TO ANY FACTS THAT MAY BE DISCLOSED BY A FULL AND ACCURATE TITLE SEARCH.
- THIS MAP MAY NOT BE A CERTIFIED SURVEY AND HAS NOT BEEN REVIEWED BY A LOCAL GOVERNMENT AGENCY FOR COMPLIANCE WITH ANY APPLICABLE LAND DEVELOPMENT REGULATIONS AND HAS NOT BEEN REVIEWED FOR COMPLIANCE WITH RECORDING REQUIREMENTS FOR PLATS.

RWK, PA
ENGINEERING ~ SURVEYING
CORPORATE LICENSE: C-1771
101 W. MAIN ST., SUITE 202
GARNER, NC 27529
PHONE (919) 779-4854
FAX (919) 779-4056

Q:\RIVERFALL\RVFL 49\RVFL 49.DWG