

AS-BUILT IMPROVEMENTS FOR
MATTAMY HOMES, LLC.
109 MENDENHALL DRIVE
LOT 51, RIVERFALL SUBDIVISION PHASE TWO
BLACK RIVER TOWNSHIP, HARNETT COUNTY, NORTH CAROLINA

B.M. 2025, PG. 351

OPEN SPACE

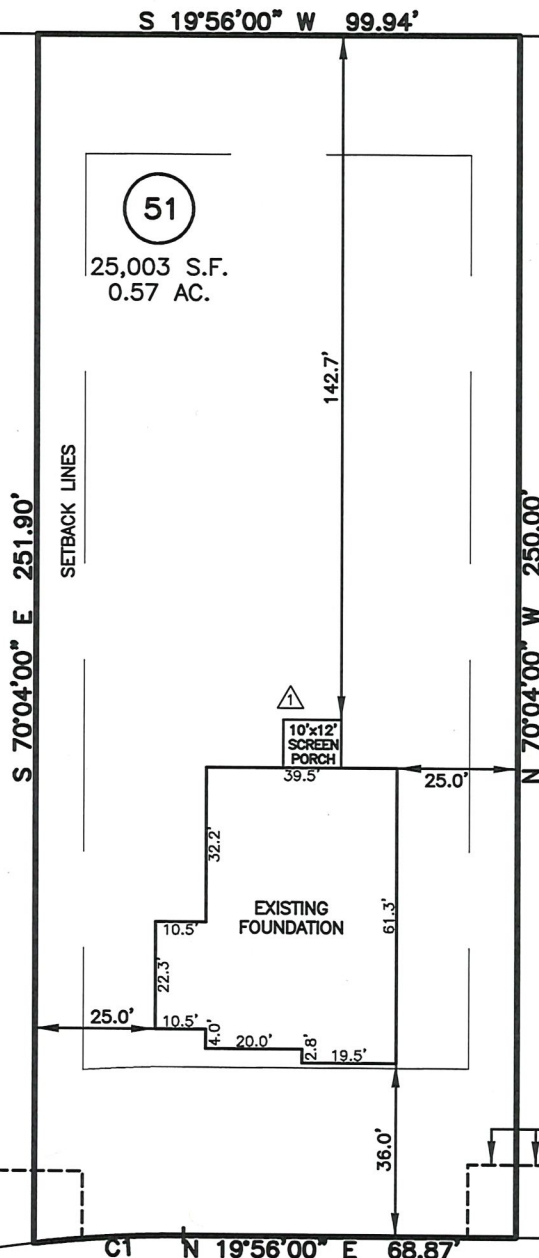
LEGEND

- △ AIR CONDITIONER
BC BACK OF CURB
BFP BACK FLOW PREVENTER
○ CLEANOUT
□ CURB INLET
DHS DRILL HOLE SET
ECM EXISTING CONCRETE MONUMENT
EDH EXISTING DRILL HOLE
EIS EXISTING IRON STAKE
EIP EXISTING IRON PIPE
EM ELECTRIC METER
EPK EXISTING PK NAIL
ES ELECTRIC STUB
FAS FLARED END SECTION
FH FIRE HYDRANT
FOP FIBER OPTIC PEDESTAL
GM GAS METER
GUY GUY
INV INVERT
IPS IRON PIPE SET
IRS IRON ROD SET
LP LIGHT POLE
MNS MAGNETIC NAIL SET
MS MANHOLE SANITARY SEWER
MSW MANHOLE STORM SEWER
OHV OVERHEAD WIRES
PKS PK NAIL SET
PNS POINT NOT SET
RRS RAIL ROAD SPIKE
TEP TELEPHONE PEDESTAL
TRF TRANSFORMER
CVP CABLE TV PEDESTAL
UP UTILITY POLE
WM WATER METER
WV WATER VALVE
YI YARD INLET
FM FIELD MEASUREMENT
△ REVISION TRIANGLE

SETBACK INFO

FRONT: 35'
REAR: 25'
SIDES: 10'

51
25,003 S.F.
0.57 AC.



MENDENHALL DRIVE
50' PUBLIC R/W

NUM	RADIUS	ARC	DELTA	CHORD BRG	CHORD
C1	255.00'	31.15'	6°59'58"	N 16°26'01" E	31.13'

THIS AS-BUILT IS
FOR CODE COMPLIANCE.
NOT FOR SALES OR
CONVEYANCE

WAKE COUNTY, NORTH CAROLINA

I CERTIFY THAT THIS MAP WAS DRAWN UNDER MY
SUPERVISION FROM FIELDWORK DONE UNDER
MY SUPERVISION; THAT THE IMPROVEMENTS LIE
WHOLLY UPON THE LOT AND THAT THE PROPERTY
SHOWN IS AN EXISTING PARCEL OR PARCELS OF
LAND.

CHARLES R. PIRATZKY

L-2813

DATE



REV1: AUG. 22, 2025
DATE: JULY 25, 2025

Q:\FieldLoc\RVFL 34 51 53 FDN.txt

REFERENCES:

B.M. 2025, P. 351



NOTES

SCALE: 1" = 40

1. THIS SURVEY SUBJECT TO ANY FACTS THAT MAY BE DISCLOSED BY A FULL AND ACCURATE TITLE SEARCH.
2. THIS MAP MAY NOT BE A CERTIFIED SURVEY AND HAS NOT BEEN REVIEWED BY A LOCAL GOVERNMENT AGENCY FOR COMPLIANCE WITH ANY APPLICABLE LAND DEVELOPMENT REGULATIONS AND HAS NOT BEEN REVIEWED FOR COMPLIANCE WITH RECORDING REQUIREMENTS FOR PLATS.

RWK, PA
ENGINEERING ~ SURVEYING
CORPORATE LICENSE: C-1771
101 W. MAIN ST., SUITE 202
GARNER, NC 27529
PHONE (919) 779-4854
FAX (919) 779-4056

Q:\RIVERFALL\RVFL 49\RVFL 49.DWG