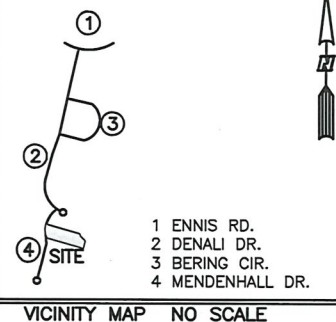


AS-BUILT IMPROVEMENTS FOR
MATTAMY HOMES, LLC.
77 MENDENHALL DRIVE
LOT 53, RIVERFALL SUBDIVISION PHASE TWO
BLACK RIVER TOWNSHIP, HARNETT COUNTY, NORTH CAROLINA

B.M. 2025, PG. 351

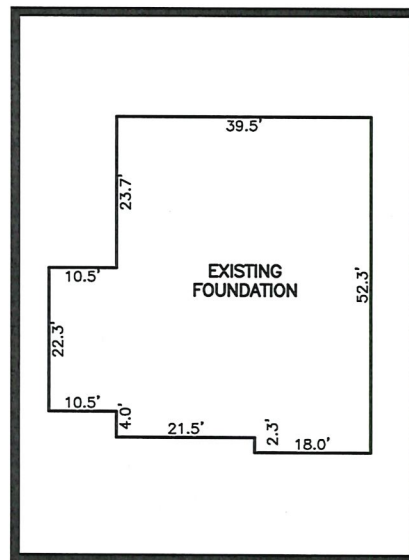
OPEN SPACE



LEGEND

- AIR CONDITIONER
- BC BACK OF CURB
- BFP BACK FLOW PREVENTER
- CLEANOUT
- CURB INLET
- DHS DRILL HOLE SET
- ECM EXISTING CONCRETE MONUMENT
- EDH EXISTING DRILL HOLE
- EIS EXISTING IRON STAKE
- EIP EXISTING IRON PIPE
- EM ELECTRIC METER
- EPK EXISTING PK NAIL
- ES ELECTRIC STUB
- FLARED END SECTION
- FIRE HYDRANT
- FIBER OPTIC PEDESTAL
- GM GAS METER
- GUY
- INV. INVERT
- IPS IRON PIPE SET
- IRS IRON ROD SET
- LIGHT POLE
- MNS MAGNETIC NAIL SET
- MANHOLE SANITARY SEWER
- MANHOLE STORM SEWER
- OHV OVERHEAD WIRES
- PKS PK NAIL SET
- PNS POINT NOT SET
- RSS RAIL ROAD SPIKE
- TELEPHONE PEDESTAL
- TRANSFORMER
- CABLE TV PEDESTAL
- UTILITY POLE
- WATER METER
- WATER VALVE
- YARD INLET
- FIELD MEASUREMENT
- REVISION TRIANGLE

53
26,763 S.F.
0.61 AC.



INSET SCALE: 1"=30'

SETBACK INFO

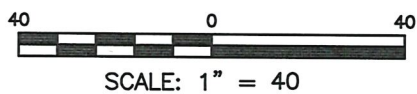
FRONT: 35'
REAR: 25'
SIDES: 10'

REFERENCES:

B.M. 2025, PG. 351

LINE	BEARING	DISTANCE
L1	S 01°04'10" W	13.10'
L2	S 39°50'56" E	60.56'
L3	N 05°22'46" W	40.16'

MENDENHALL DRIVE
50' PUBLIC R/W



WAKE COUNTY, NORTH CAROLINA

CURVE	RADIUS	ARC	DELTA	CHORD BRG	CHORD DIS
C1	205.00'	59.84'	16°43'31"	N 02°58'59" E	59.63'

I CERTIFY THAT THIS MAP WAS DRAWN UNDER MY SUPERVISION FROM FIELDWORK DONE UNDER MY SUPERVISION; THAT THE IMPROVEMENTS LIE WHOLLY UPON THE LOT AND THAT THE PROPERTY SHOWN IS AN EXISTING PARCEL OR PARCELS OF LAND.

THIS AS-BUILT IS
FOR CODE COMPLIANCE.
NOT FOR SALES OR
CONVEYANCE

NOTES

- THIS SURVEY SUBJECT TO ANY FACTS THAT MAY BE DISCLOSED BY A FULL AND ACCURATE TITLE SEARCH.
- THIS MAP MAY NOT BE A CERTIFIED SURVEY AND HAS NOT BEEN REVIEWED BY A LOCAL GOVERNMENT AGENCY FOR COMPLIANCE WITH ANY APPLICABLE LAND DEVELOPMENT REGULATIONS AND HAS NOT BEEN REVIEWED FOR COMPLIANCE WITH RECORDING REQUIREMENTS FOR PLATS.

CHARLES R. PIRATZKY, P.L.S.

L-2813

SEAL

L-2813



DATE

DATE: JULY 25, 2025

Q:\FieldLoc\RVL 34 51 53 FDN.txt

RWK, PA
ENGINEERING ~ SURVEYING
CORPORATE LICENSE: C-1771
101 W. MAIN ST., SUITE 202
GARNER, NC 27529
PHONE (919) 779-4854
FAX (919) 779-4056

Q:\RIVERFALL\RVL 53\RVL 53.DWG