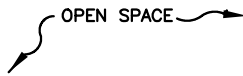
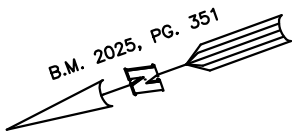


SITE PLAN FOR  
MATTAMY HOMES, LLC.  
77 MENDENHALL DRIVE  
LOT 53, RIVERFALL SUBDIVISION PHASE TWO  
BLACK RIVER TOWNSHIP, HARNETT COUNTY, NORTH CAROLINA



IMPERVIOUS SURFACES	S.F.
HOUSE	2,250
WALK & DRIVE	1,320
PORCH	120
MISC	40
TOTAL	3,730
MAX. IMPERVIOUS	5,500

54

53

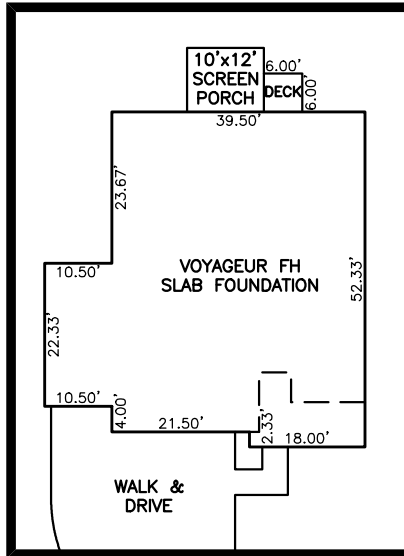
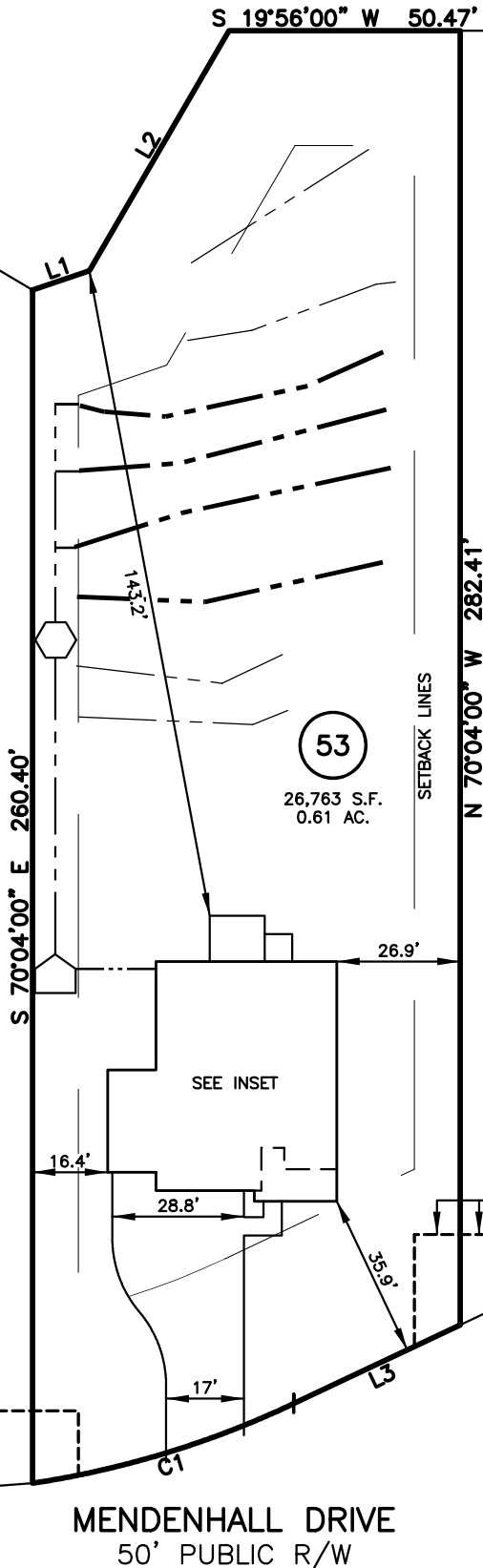
52

LEGEND

- △ AIR CONDITIONER  
BC BACK OF CURB  
BFP BACK FLOW PREVENTER  
○ CLEANOUT  
CURB INLET  
DHS DRILL HOLE SET  
ECM EXISTING CONCRETE MONUMENT  
EDH EXISTING DRILL HOLE  
EIS EXISTING IRON STAKE  
EIP EXISTING IRON PIPE  
EIM EXISTING IRON METER  
EPK EXISTING PK NAIL  
ES ELECTRIC STUB  
FLARED END SECTION  
FIRE HYDRANT  
FIBER OPTIC PEDESTAL  
GAS METER  
GUY  
INV. INVERT  
IPS IRON PIPE SET  
IRS IRON ROD SET  
LIGHT POLE  
MNS MAGNETIC NAIL SET  
MANHOLE SANITARY SEWER  
MANHOLE STORM SEWER  
OHW OVERHEAD WIRES  
PK NAIL SET  
PNS POINT NOT SET  
RAIL ROAD SPIKE  
TELEPHONE PEDESTAL  
TRANSFORMER  
CABLE TV PEDESTAL  
UTILITY POLE  
WATER METER  
WATER VALVE  
YARD INLET  
FIELD MEASUREMENT  
REVISION TRIANGLE  
REPAIR DRAINFIELD  
INITIAL DRAINFIELD  
TANK  
MANIFOLD

LINE	BEARING	DISTANCE
L1	S 01°04'10" W	13.10'
L2	S 39°50'56" E	60.56'
L3	S 05°22'46" E	40.16'

CURVE	RADIUS	ARC	DELTA	CHORD BRG	CHORD DIS
C1	205.00'	59.84'	16°43'31"	N 02°58'59" E	59.63'



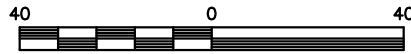
INSET SCALE: 1"=30'

SETBACK INFO

FRONT: 35'  
REAR: 25'  
SIDES: 10'

REFERENCES:

B.M. 2025, PG. 351



SCALE: 1" = 40

NOTES

1. SEPTIC & INFRASTRUCTURE LOCATIONS SHOWN PER PLAN TITLED "SEPTIC SYSTEM LAYOUT, LOT 53 RIVERFALL SUBDIVISION PHASE 2," DATED AUGUST 2, 2024 PROVIDED BY HAL OWEN & ASSOCIATES INC.

THIS IS A SITE PLAN AS DEFINED BY G.S. 160D-102 AND IS NOT INTENDED TO BE ATTACHED TO ANY INSTRUMENT RECORDED IN THE REGISTER OF DEEDS OFFICE

SITE PLAN  
NOT FOR RECORDATION,  
CONVEYANCE OR SALES

REV CODE: 1.FLIP, 2.PLAN, 3.ROTATE, 4.MOVE, 5.SS  
6.SEVERAL OF ABOVE, 7.LAND FEATURE, 8. OTHER

DATE: JUN. 12, 2025

F.B. \_\_\_\_\_

**RWK, PA**  
ENGINEERING ~ SURVEYING  
CORPORATE LICENSE: C-1771  
101 W. MAIN ST., SUITE 202  
GARNER, NC 27529  
PHONE (919) 779-4854  
FAX (919) 779-4056

C:\RIVERFALL\RVFL53\RVFL53.DWG