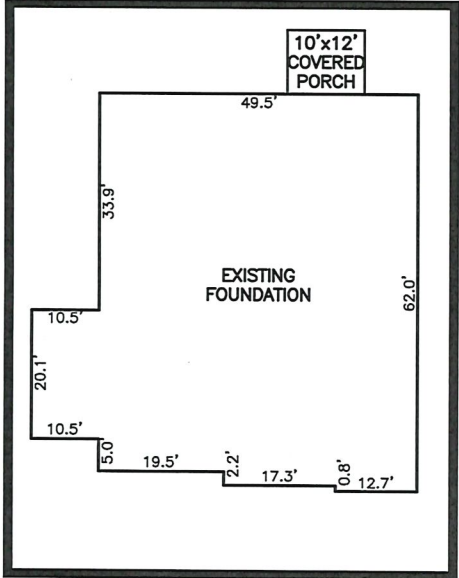
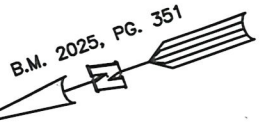
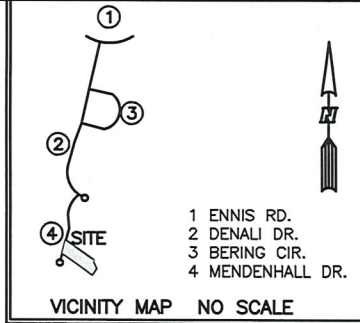


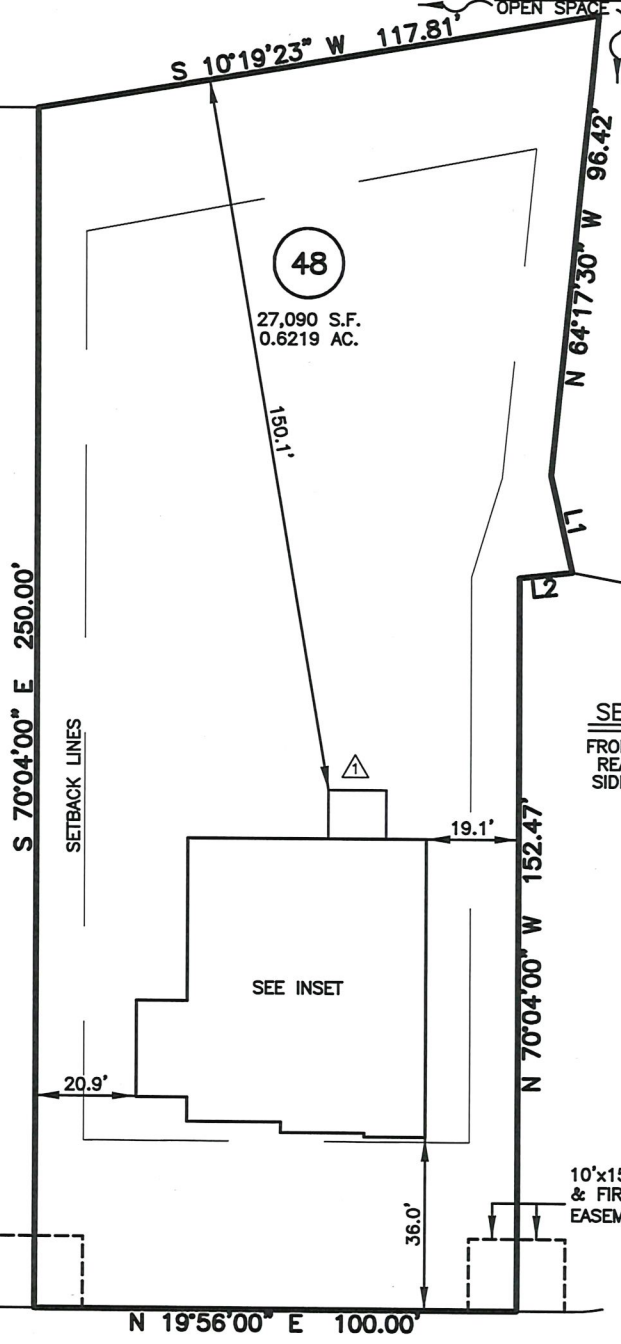
AS-BUILT IMPROVEMENTS FOR
MATTAMY HOMES, LLC.
167 MENDENHALL DRIVE
LOT 48, RIVERFALL SUBDIVISION PHASE TWO
BLACK RIVER TOWNSHIP, HARNETT COUNTY, NORTH CAROLINA



LEGEND

- AIR CONDITIONER
- BACK OF CURB
- BACK FLOW PREVENTER
- CLEANOUT
- CURB INLET
- DHS DRILL HOLE SET
- ECM EXISTING CONCRETE MONUMENT
- EDH EXISTING DRILL HOLE
- EIS EXISTING IRON STAKE
- EIP EXISTING IRON PIPE
- EM ELECTRIC METER
- EPK EXISTING PK NAIL
- ES ELECTRIC STUB
- FLARED END SECTION
- FIRE HYDRANT
- FIBER OPTIC PEDESTAL
- GAS METER
- GUY
- INVERT
- IRON PIPE SET
- IRON ROD SET
- LIGHT POLE
- MNS MAGNETIC NAIL SET
- MANHOLE SANITARY SEWER
- MANHOLE STORM SEWER
- OVERHEAD WIRES
- PKS PK NAIL SET
- PNS POINT NOT SET
- RRS RAIL ROAD SPIKE
- TELEPHONE PEDESTAL
- TRANSFORMER
- CABLE TV PEDESTAL
- UTILITY POLE
- WATER METER
- WATER VALVE
- YARD INLET
- FIELD MEASUREMENT
- REVISION TRIANGLE

49



47

MENDENHALL DRIVE
50' PUBLIC R/W

LINE	BEARING	DISTANCE
L1	N 82°37'52" W	20.59'
L2	N 13°47'46" E	11.00'

REFERENCES:

B.M. 2025, PG. 351



SCALE: 1" = 40

NOTES

- THIS SURVEY SUBJECT TO ANY FACTS THAT MAY BE DISCLOSED BY A FULL AND ACCURATE TITLE SEARCH.
- THIS MAP MAY NOT BE A CERTIFIED SURVEY AND HAS NOT BEEN REVIEWED BY A LOCAL GOVERNMENT AGENCY FOR COMPLIANCE WITH ANY APPLICABLE LAND DEVELOPMENT REGULATIONS AND HAS NOT BEEN REVIEWED FOR COMPLIANCE WITH RECORDING REQUIREMENTS FOR PLATS.

WAKE COUNTY, NORTH CAROLINA

I CERTIFY THAT THIS MAP WAS DRAWN UNDER MY SUPERVISION FROM FIELDWORK DONE UNDER MY SUPERVISION; THAT THE IMPROVEMENTS LIE WHOLLY UPON THE LOT AND THAT THE PROPERTY SHOWN IS AN EXISTING PARCEL OR PARCELS OF LAND.

THIS AS-BUILT IS
FOR CODE COMPLIANCE.
NOT FOR SALES OR
CONVEYANCE



8-22-25

DATE

REV1: AUG. 22, 2025
DATE: JULY 23, 2025

Q:\FieldLoc\RIVERFALL44 48FDN.txt

RWK, PA
ENGINEERING ~ SURVEYING
CORPORATE LICENSE: C-1771
101 W. MAIN ST., SUITE 202
GARNER, NC 27529
PHONE (919) 779-4854
FAX (919) 779-4056

C:\RIVERFALL\RVFL48\RVFL48.DWG