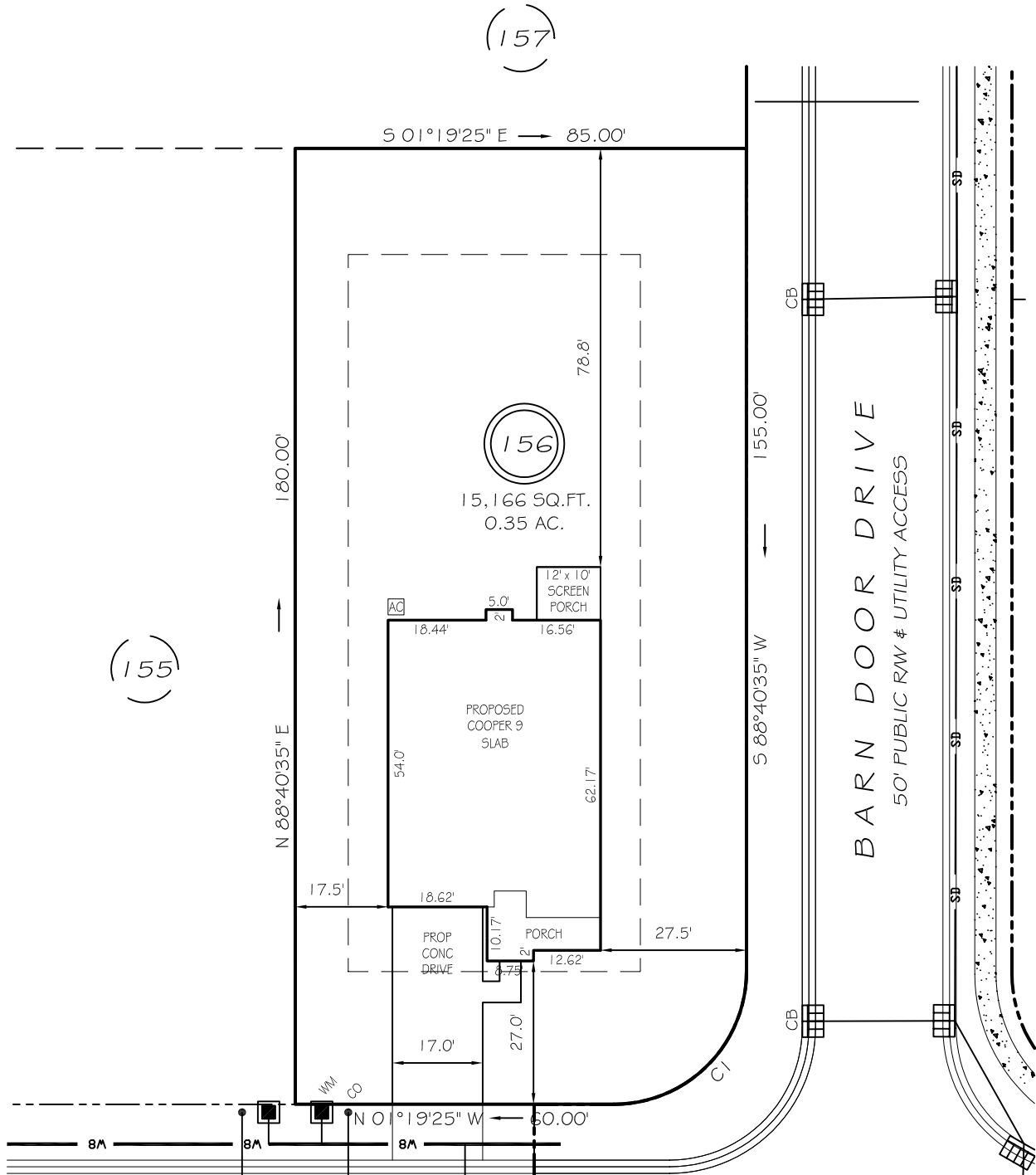


I, MICHAEL P. GRIFFIN, certify that under my direction and supervision this map was drawn from an actual field survey; that the error of closure of the survey as calculated by coordinates is 1: 10,000+; that the area shown hereon was calculated by coordinates. Dashed lines shown hereon were not surveyed.

Witness my hand and seal this day of MONTH 2025.

BK 2024 PGS 572-573
HARNETT CO. REGISTRY



LITTLE BRANCH DRIVE

IMPERVIOUS AREAS

HOUSE 2482 SQ. FT.
DRIVE & WALKS 676 SQ. FT.
A/C PAD 9 SQ. FT.

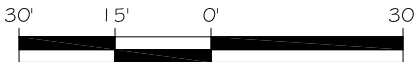
TOTAL 3167 SQ. FT.
ALLOWED 3800 SQ. FT.

C1 R=25.00' L=39.27' S46°19'25"E 35.36'

50' PUBLIC RW & UTILITY ACCESS

SETBACKS

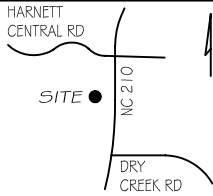
FRONT 25'
REAR 20'
SIDE 10'
CORNER SIDE 20'



GRAPHIC SCALE
1"=30'

LEGEND

EIP	EXISTING IRON PIPE	FES	FLARED END SECTION
IPS	IRON PIPE SET	WM	WATER METER
R/W	RIGHT OF WAY	CO	CLEAN OUT
N/F	NOW OR FORMERLY	FH	FIRE HYDRANT
EIS	EXISTING IRON STAKE	CB	CATCH BASIN



PRELIMINARY

NOT FOR RECORDATION,
SALES OR CONVEYANCE



GRIFFIN LAND SURVEYING, INC.

P. O. BOX 148
FUQUAY-VARINA, NC 27526
(919) - 567 - 1963

FIRM LIC.# C-1345

PLOT PLAN

FOR

DRB HOMES

THE FARM AT
NEILLS CREEK

LOT 156

LITTLE BRANCH DRIVE

NORTH CAROLINA

HARNETT COUNTY NEILL'S CREEK TWSHP

DRAWN BY KDF

DATE 5/29/25

CHECKED BY MPG

SCALE 1" = 30'