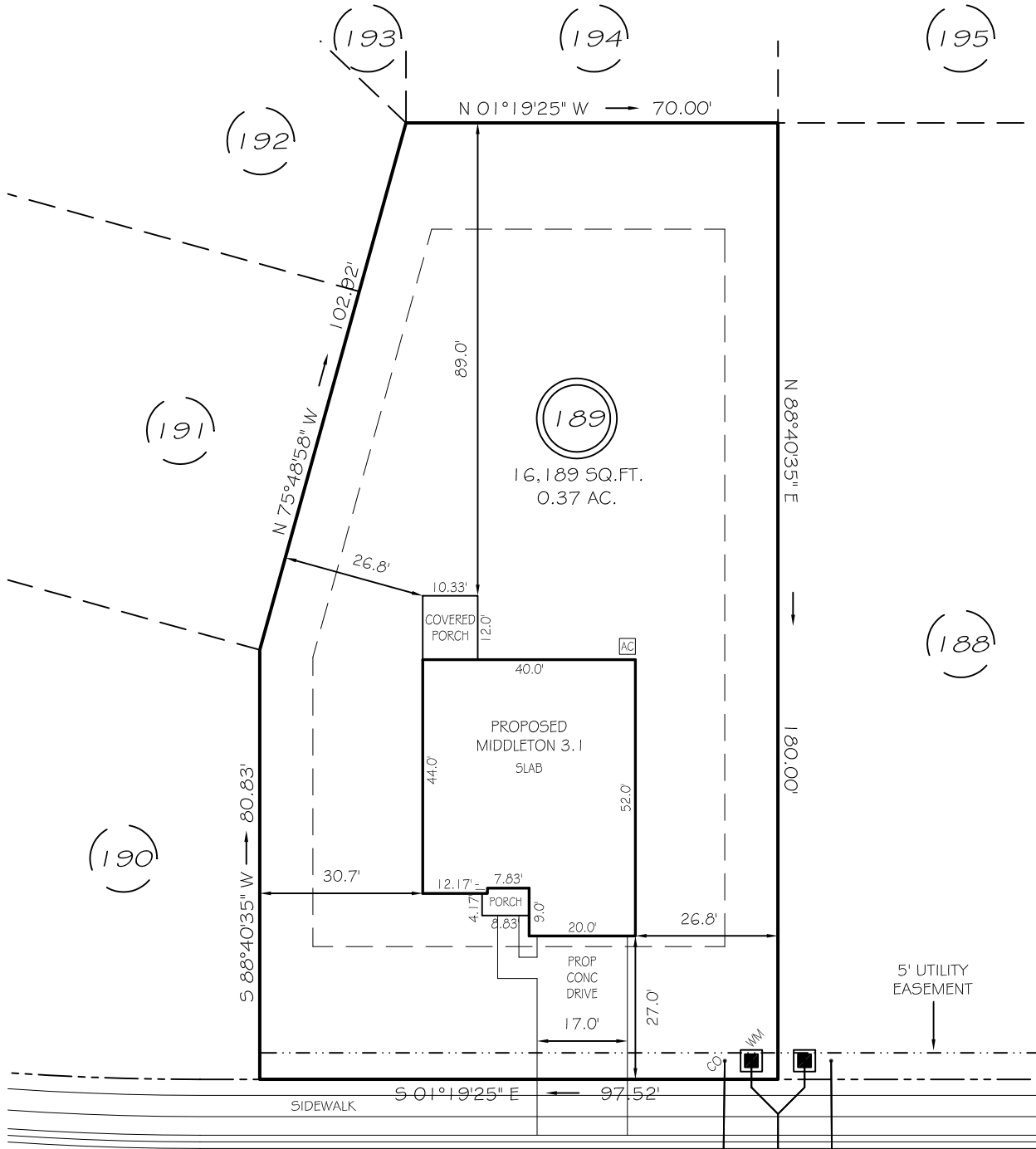


I, MICHAEL P. GRIFFIN, certify that under my direction and supervision this map was drawn from an actual field survey; that the error of closure of the survey as calculated by coordinates is 1: 10,000+; that the area shown hereon was calculated by coordinates. Dashed lines shown hereon were not surveyed.

Witness my hand and seal this day of MONTH 2025.

BK 2023 PGS 658-660
HARNETT CO. REGISTRY



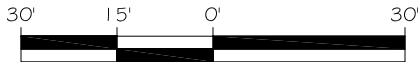
APPLESEED DRIVE

50' PUBLIC RW & UTILITY ACCESS

IMPERVIOUS AREAS

HOUSE 2081 SQ. FT.
DRIVE & WALKS 520 SQ. FT.
A/C PAD 9 SQ. FT.

TOTAL 2610 SQ. FT.
ALLOWED 3800 SQ. FT.



GRAPHIC SCALE
1"=30'

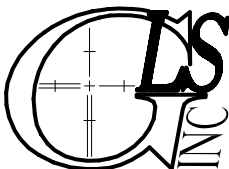
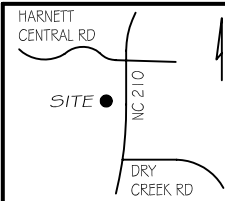
SETBACKS

FRONT 25'
REAR 20'
SIDE 10'
CORNER SIDE 20'

PRELIMINARY

NOT FOR RECORDATION,
SALES OR CONVEYANCE

EIP	EXISTING IRON PIPE	FES	FLARED END SECTION
IPS	IRON PIPE SET	WM	WATER METER
R/W	RIGHT OF WAY	CO	CLEAN OUT
N/F	NOW OR FORMERLY	FH	FIRE HYDRANT
EIS	EXISTING IRON STAKE	CB	CATCH BASIN



GRIFFIN LAND SURVEYING, INC.

P. O. BOX 148
FUQUAY-VARINA, NC 27526
(919) - 567 - 1963

FIRM LIC.# C-1345

PLOT PLAN
FOR
DRB HOMES

THE FARM AT
NEILLS CREEK
LOT 189

172 APPLESEED DRIVE
NORTH CAROLINA

HARNETT COUNTY NEILL'S CREEK TWSHP

DRAWN BY KDF

DATE 5/29/25

CHECKED BY MPG

SCALE 1" = 30'