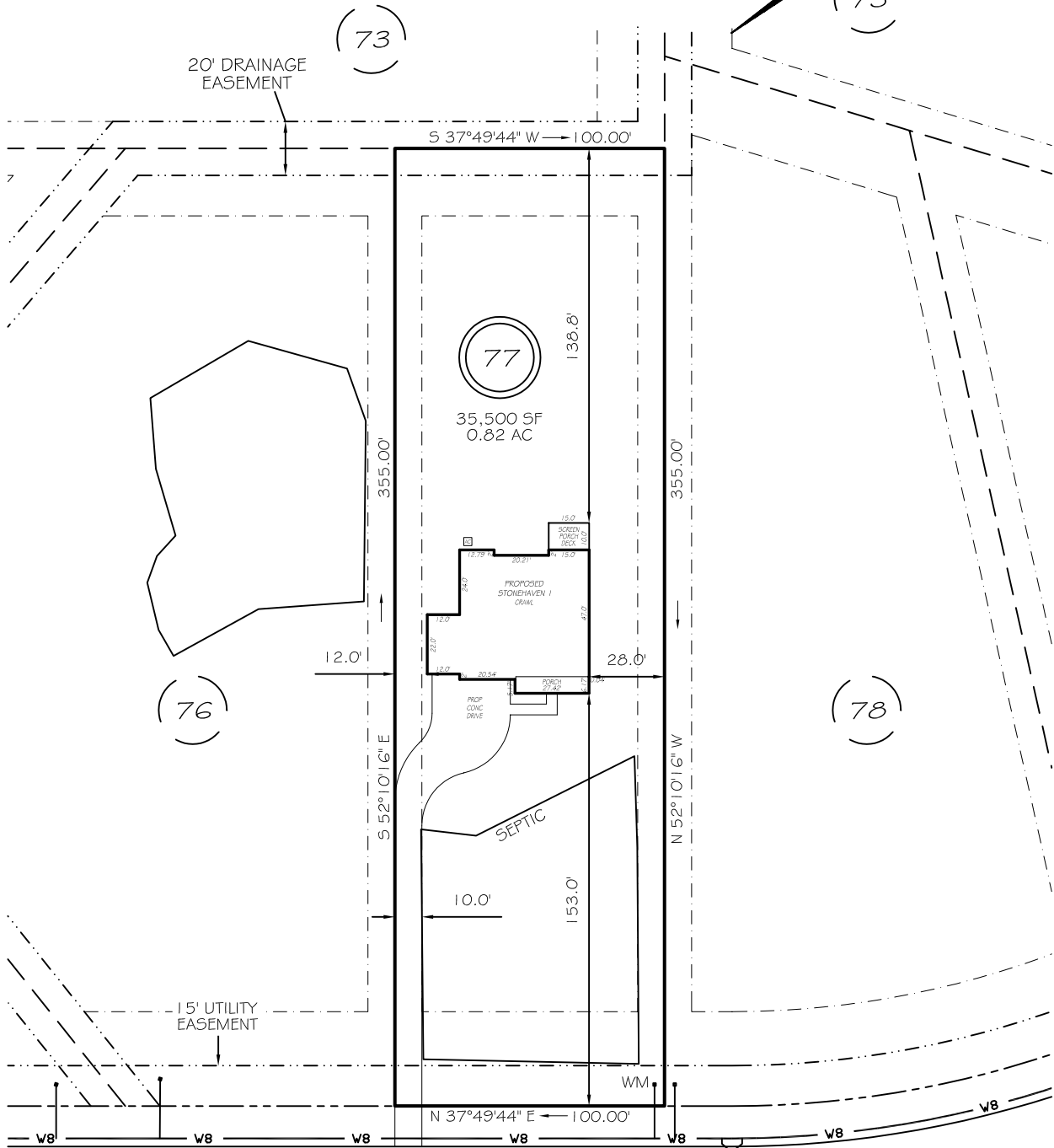


I, MICHAEL P. GRIFFIN, certify that under my direction and supervision this map was drawn from an actual field survey; that the error of closure of the survey as calculated by coordinates is 1: 10,000+; that the area shown hereon was calculated by coordinates. Dashed lines shown hereon were not surveyed.

Witness my hand and seal this day of MONTH 2025.

BK 2024 PG 638
HARNETT CO. REGISTRY



BRONZE LEAF DRIVE
50' RW (PUBLIC & UTILITY ACCESS)



GRAPHIC SCALE
1"=60'

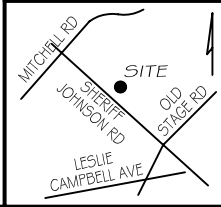
LEGEND

PRELIMINARY
NOT FOR RECORDATION,
SALES OR CONVEYANCE

EIP	EXISTING IRON PIPE	FES	FLARED END SECTION
IPS	IRON PIPE SET	WM	WATER METER
R/W	RIGHT OF WAY	CO	CLEAN OUT
N/F	NOW OR FORMERLY	PP	POWER POLE
EIS	EXISTING IRON STAKE	CB	CATCH BASIN

ZONING: RA-30
SETBACKS

FRONT	35'
REAR	25'
SIDE	10'
CORNER SIDE	20'



GRIFFIN LAND SURVEYING, INC.

P. O. BOX 148
FUQUAY-VARINA, NC 27526
(919) - 567 - 1963

FIRM LIC.# C-1345

PLOT PLAN
FOR

DRB HOMES

BLAKE POND SUBDIVISION

LOT 77

BRONZE LEAF DRIVE

LILLINGTON, N.C.

HARNETT COUNTY NEILL'S CREEK & GROVE TOWNSHIP

DRAWN BY KDF

DATE 5/27/25

CHECKED BY MPG

SCALE 1" = 60'