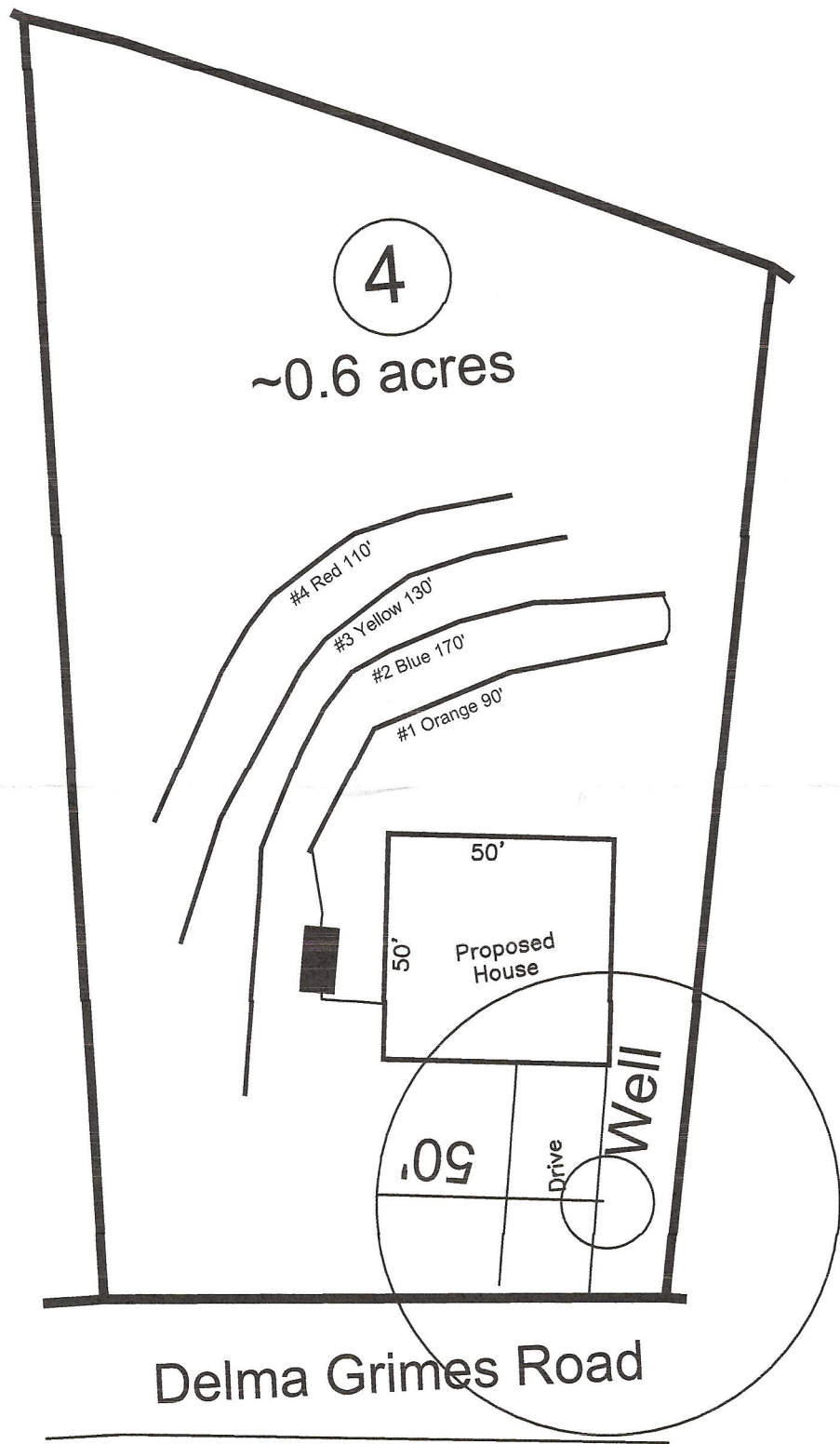


Delma Grimes Road  
3-Bedroom Septic Proposal  
Lot #4



System: Serial Distribution  
Lines: 1-2 (260')  
0.35 LTAR  
18" Trench Bottom  
Accepted Status System  
Repair: Serial Distribution  
Lines: 3-4 (240')  
0.35 LTAR  
18" Trench Bottom  
Accepted Status System

GRAPHIC SCALE  
1" = 50'



Adams  
Soil Consulting  
919-414-6761  
Job #636