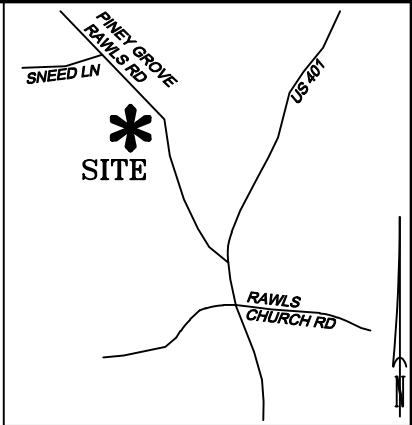
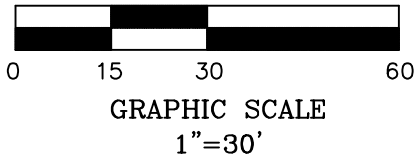


LEGEND

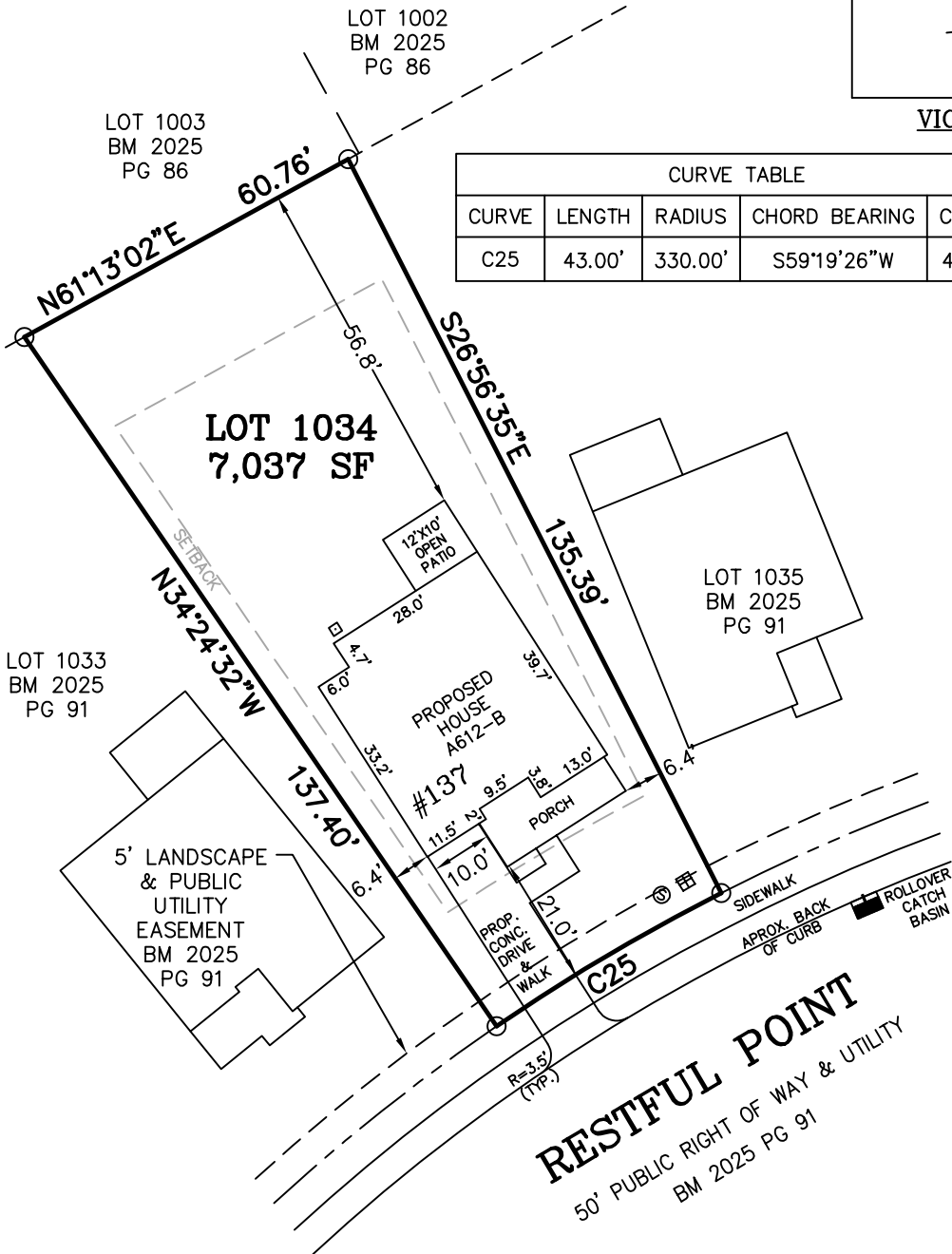
- MATHEMATICAL POINT
- CONTROL CORNER
- 田 WATER METER
- ⊙ SEWER CLEAN OUT
- ⛑ FIRE HYDRANT



VICINITY MAP (NTS)

CURVE TABLE				
CURVE	LENGTH	RADIUS	CHORD BEARING	CHORD
C25	43.00'	330.00'	S59°19'26"W	42.97'

SEE NOTES



NOTES:

- REFERENCE HARNETT CO. BM 2025, PG 89-93 FOR BOUNDARY INFORMATION, NORTH INDEX & TIE LINES TO SUBDIVISION CONTROL CORNERS.
- ZONED: RA-30, RA-40, & CONSERVATION.
- SETBACKS, PER BM 2025 PG 89:
43' LOT WIDTH:
FRONT YARD-20', SIDE YARD-4' & 4' OR 0' & 8',
REAR YARD-20', CORNER YARD-12'.
>43' LOT WIDTH:
FRONT YARD-20', SIDE YARD-5', REAR YARD-20',
CORNER YARD-12'.
- PROPERTY IS NOT LOCATED WITHIN A SPECIAL FLOOD HAZARD AREA AS SCALED FROM THE NFIP FIRM No. 3720065500L (EFFECTIVE DATE: JULY 19, 2022).

MAXIMUM BUILT-UPON AREA-2,300 SF

TOTAL ESTIMATED IMPERVIOUS-1,932 SF	
SITE	SQ. FT.
HOUSE	1,457
DRIVEWAY	295
LEAD WALK	51
COV. PORCH	120
A/C PAD	9

PERMIT PLAN LOT: 1034

SERENITY SUBDIVISION, PHASE 3B
HECTOR'S CREEK TOWNSHIP, HARNETT COUNTY, NC

SURVEYED FOR
DAVID WEEKLEY HOMES
1901 N. HARRISON AVENUE, SUITE 200
CARY, NC 27513

I HEREBY CERTIFY THAT THE BUILDING WILL LIE WHOLLY ON THE LOT. THIS PLAT IS OF AN EXISTING PARCEL OF LAND. THIS IS NOT A SURVEY AND NOT FOR RECORDATION PURPOSES.

PRELIMINARY PLAN

MATTHEW A. HAYES, PLS L-4516



MSS LAND CONSULTANTS, PC
"Committed to Total Quality Service"
Firm License: C-2070
E S T. 1 9 9 8

6118 St. Giles St Phone (919) 510-4464
(Suite E) Fax (919) 510-9102
Raleigh, NC 27612 Email: hayesm@mssland.com