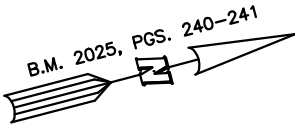
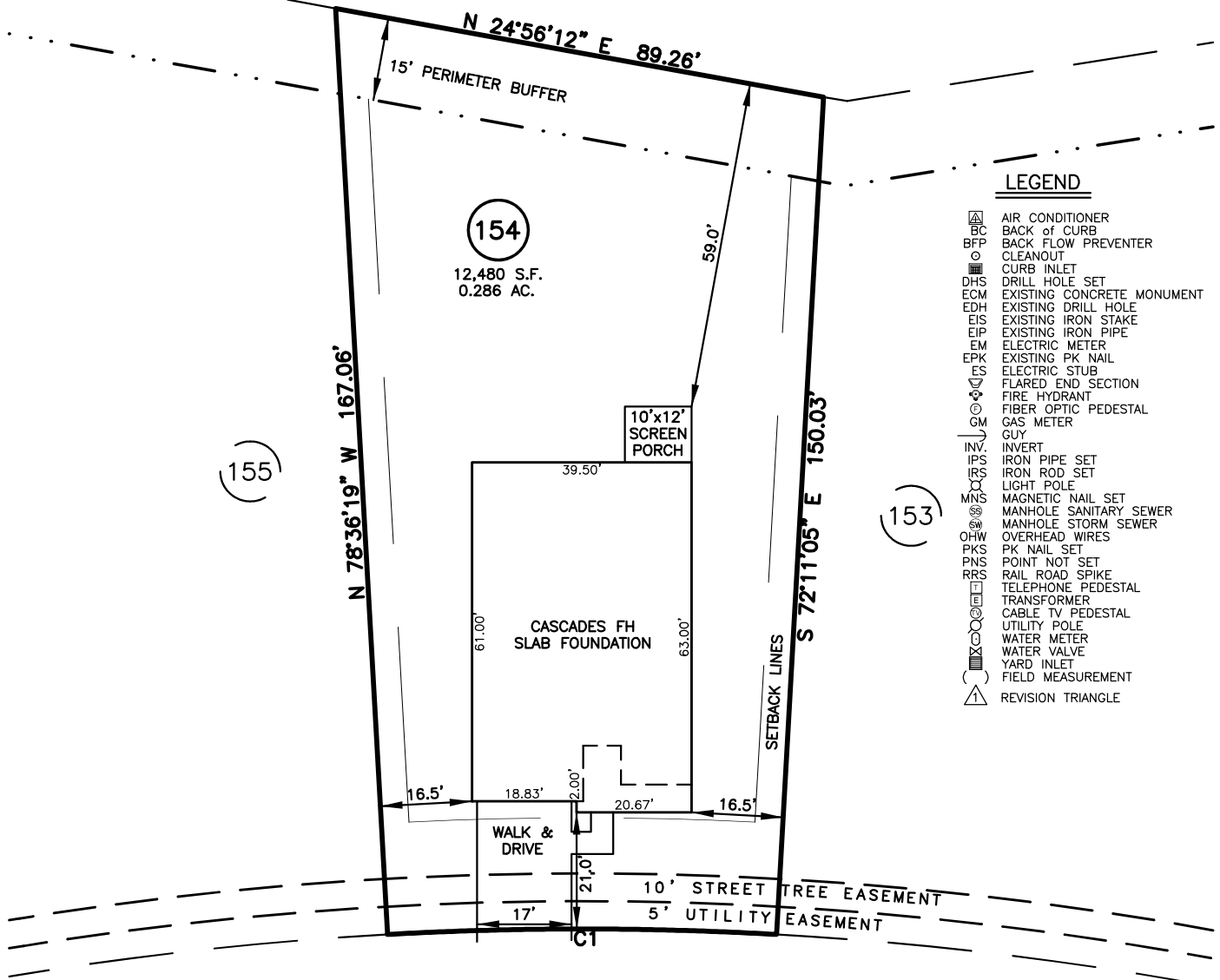


**SITE PLAN FOR
MATTAMY HOMES**
478 PROVIDENCE CREEK DRIVE
LOT 154, PROVIDENCE CREEK PHASE 3B
HECTORS CREEK AND BLACK RIVER TOWNSHIP, HARNETT COUNTY, NORTH CAROLINA



N/F
JOHNNY MITCHELL COTTON
D.B 4226, PG. 1909



LEGEND

- ▲ AIR CONDITIONER
- BC BACK OF CURB
- BFP BACK FLOW PREVENTER
- CLEANOUT
- ◻ CURB INLET
- DHS DRILL HOLE SET
- ECM EXISTING CONCRETE MONUMENT
- EDH EXISTING DRILL HOLE
- EIS EXISTING IRON STAKE
- EIP EXISTING IRON PIPE
- EM ELECTRIC METER
- EPK EXISTING PK NAIL
- ES ELECTRIC STUB
- ▽ FLARED END SECTION
- ⊕ FIRE HYDRANT
- ⊙ FIBER OPTIC PEDESTAL
- ⊙ GAS METER
- GUY
- INV INVERT
- IPS IRON PIPE SET
- IRS IRON ROD SET
- LIGHT POLE
- MNS MAGNETIC NAIL SET
- ⊙ MANHOLE SANITARY SEWER
- ⊙ MANHOLE STORM SEWER
- OHV OVERHEAD WIRES
- PKS PK NAIL SET
- PNS POINT NOT SET
- RRS RAIL ROAD SPIKE
- ⊕ TELEPHONE PEDESTAL
- ⊕ TRANSFORMER
- ⊕ CABLE TV PEDESTAL
- ⊕ UTILITY POLE
- ⊕ WATER METER
- ⊕ WATER VALVE
- ⊕ YARD INLET
- () FIELD MEASUREMENT
- △ REVISION TRIANGLE

PROVIDENCE CREEK DRIVE
50' PUBLIC R/W & UTILITY EASEMENT

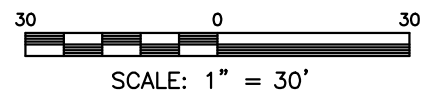
NUM	RADIUS	ARC	DELTA	CHORD BRG	CHORD
C1	625.00'	70.04'	6°25'14"	S 14°36'18" W	70.00'

IMPERVIOUS SURFACES	S.F.
HOUSE	2,460
WALK & DRIVE	440
SCREEN PORCH	120
TOTAL	3,020

SETBACK INFO

FRONT:	20'
REAR:	15'
SIDES:	5'
CORNER SIDE:	15'

REFERENCES:
B.M. 2025, PGS. 240-241



THIS IS A SITE PLAN AS DEFINED BY G.S. 160D-102 AND IS NOT INTENDED TO BE ATTACHED TO ANY INSTRUMENT RECORDED IN THE REGISTER OF DEEDS OFFICE

SITE PLAN
NOT FOR RECORDATION,
CONVEYANCE OR SALES

DATE: MAY 22, 2025

F.B. _____

RWK, PA
ENGINEERING ~ SURVEYING
CORPORATE LICENSE: C-1771
101 W. MAIN ST., SUITE 202
GARNER, NC 27529
PHONE (919) 779-4854
FAX (919) 779-4056

REV CODE: 1.FLIP, 2.PLAN, 3.ROTATE, 4.MOVE, 5.SS
6.SEVERAL OF ABOVE, 7.LAND FEATURE, 8. OTHER