

PRELIMINARY PLOT PLAN FOR

MUNGO HOMES

LOT 63, LEANDER LEE PRESERVE SUBDIVISION

214 HARRIETTE COURT
REF: P.B. 2025, PG. 267

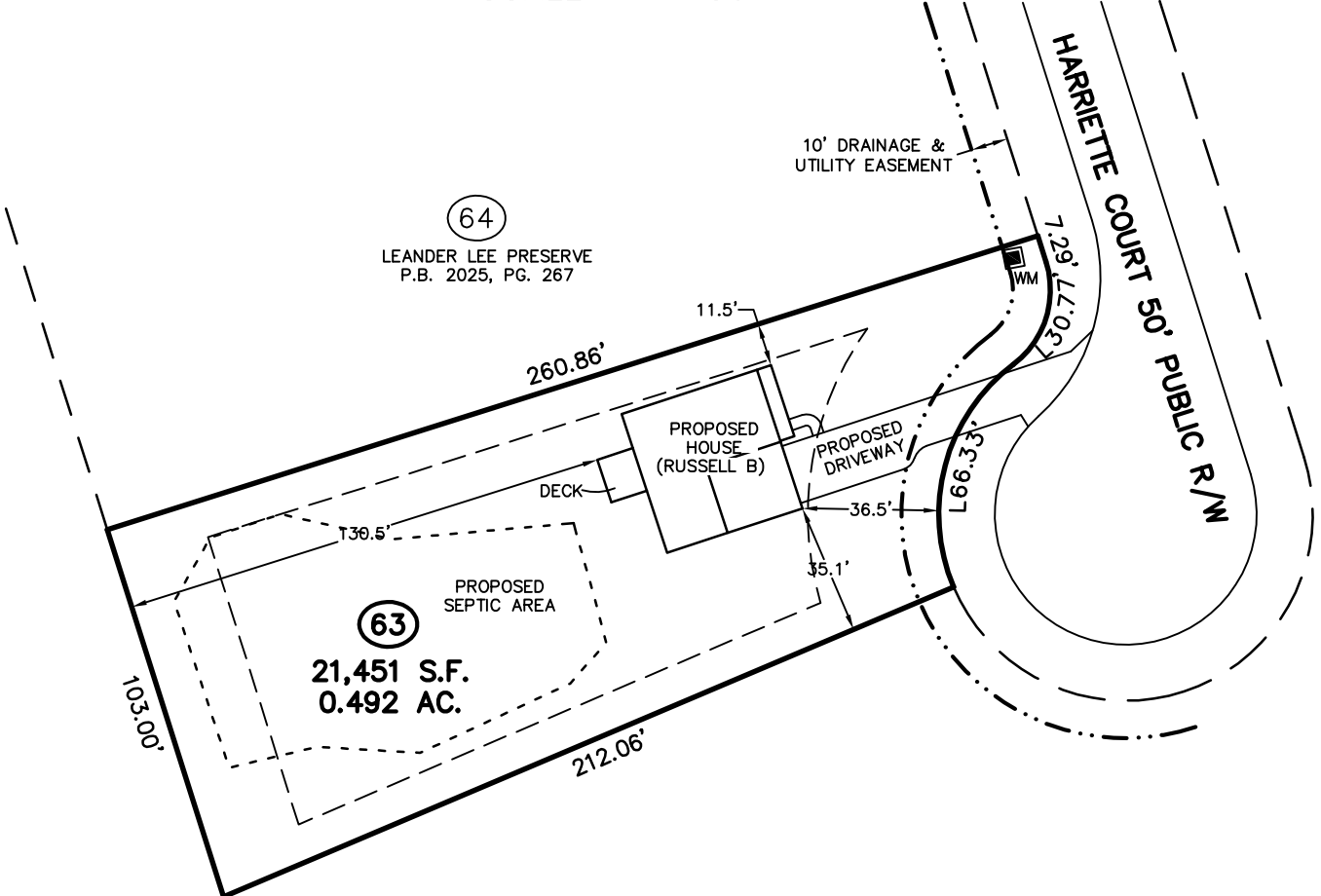
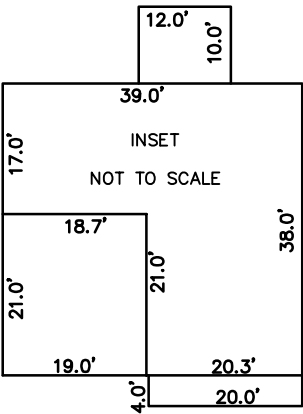
LILLINGTON TOWNSHIP
HARNETT COUNTY, NORTH CAROLINA

MAY 12, 2025

ZONED RA-20R



SCALE 1"=50'



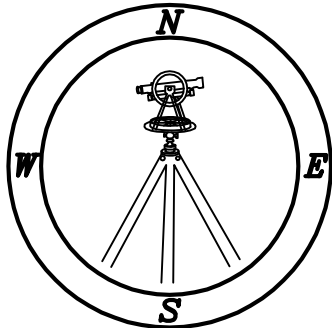
N/F
SENER FAMILY REAL ESTATE LLC
KNOWN AS STEPHENS PLACE OF
DB 1876, PG 256
PB 2023, PG 581

62
LEANDER LEE PRESERVE
P.B. 2025, PG. 267

IMPERVIOUS SURFACE TABLE	
HOUSE	1,562 S.F.
DECK	120 S.F.
DRIVEWAY	755 S.F.
SIDEWALKS	30 S.F.
MISC/UTILITIES	9 S.F.
TOTAL IMPERVIOUS AREA	2,476 S.F.
TOTAL LOT AREA	21,451 S.F.
PERCENTAGE OF IMPERVIOUS AREA	11.51 %

TOTAL CONCRETE & LANDSCAPE	
CONCRETE	1,137 S.F.
LANDSCAPE	18,372 S.F.

THIS SURVEYOR DOES NOT
WARRANTY THE ACCURACY
OF ARCHITECTURAL DIMENSIONS.
THEY ARE TO BE VERIFIED BY
THE CONTRACTOR.



CMP
Professional Land Surveyors
C-1525
333 S. White Street
Post Office Box 1253
Wake Forest, N.C. 27588
(919)556-3148

NOTES:
-THIS PLAN DOES NOT REFLECT AN
ACTUAL SURVEY. IT IS A PRELIMINARY
PLAN AND SHOULD BE USED FOR ITS
INTENDED PURPOSE ONLY.
-NOT FOR RECORDATION, CONVEYANCES,
OR SALES.