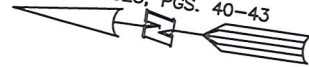


AS-BUILT IMPROVEMENTS FOR
NEW HOME, INC.
613 BEACON HILL ROAD
LOT 35, DUNCAN'S CREEK, PHASE 2
UPPER LITTLE CREEK TOWNSHIP, HARNETT COUNTY, NORTH CAROLINA

N/F
JOHNNY LYNWOOD HOLLAND
D.B. 2433, PG. 915
PLAT CABINET F SLIDE 586-A

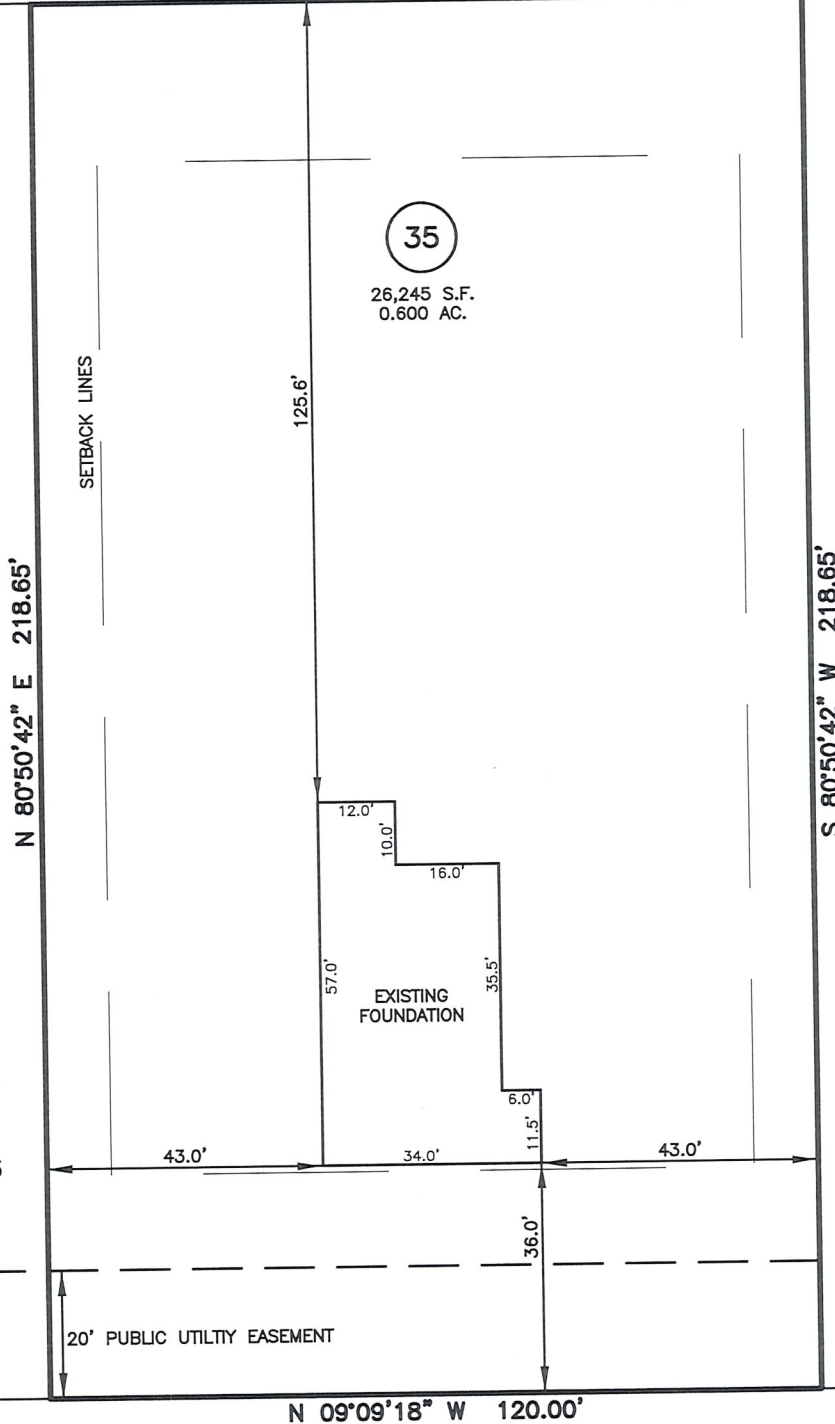
B.M. 2025, PGS. 40-43



S 09°08'32" E 120.00'

LEGEND

- △ AIR CONDITIONER
- BC BACK OF CURB
- BFP BACK FLOW PREVENTER
- CLEANOUT
- CURB INLET
- DHS DRILL HOLE SET
- ECM EXISTING CONCRETE MONUMENT
- EDH EXISTING DRILL HOLE
- EIS EXISTING IRON STAKE
- EIP EXISTING IRON PIPE
- EM ELECTRIC METER
- EPK EXISTING PK NAIL
- ES ELECTRIC STUB
- FLARED END SECTION
- FIRE HYDRANT
- FIBER OPTIC PEDESTAL
- GM GAS METER
- GUY
- INV INVERT
- IPS IRON PIPE SET
- IRS IRON ROD SET
- LIGHT POLE
- MNS MAGNETIC NAIL SET
- MANHOLE SANITARY SEWER
- MANHOLE STORM SEWER
- OVERHEAD WIRES
- PKS PK NAIL SET
- PNS POINT NOT SET
- RRS RAIL ROAD SPIKE
- TELEPHONE PEDESTAL
- TRANSFORMER
- CABLE TV PEDESTAL
- BURNING OIL RING
- WATER METER
- WATER VALVE
- YARD INLET
- () FIELD MEASUREMENT



REFERENCES:

B.M. 2025, PGS. 40-43

SETBACK INFO

FRONT: 35'
REAR: 25'
SIDES: 10'
CORNER SIDE: 20'

WAKE COUNTY, NORTH CAROLINA

I CERTIFY THAT THIS MAP WAS DRAWN UNDER MY SUPERVISION; THAT THE IMPROVEMENTS LIE WHOLLY UPON THE LOT AND THAT THE PROPERTY SHOWN IS AN EXISTING PARCEL OR PARCELS OF LAND.

BEACON HILL ROAD
50' PUBLIC R/W



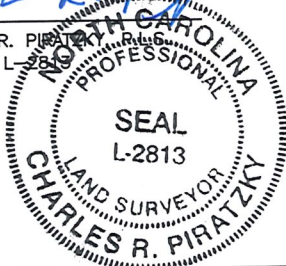
SCALE: 1" = 30'

NOTES

1. THIS SURVEY SUBJECT TO ANY FACTS THAT MAY BE DISCLOSED BY A FULL AND ACCURATE TITLE SEARCH.
2. THIS MAP MAY NOT BE A CERTIFIED SURVEY AND HAS NOT BEEN REVIEWED BY A LOCAL GOVERNMENT AGENCY FOR COMPLIANCE WITH ANY APPLICABLE LAND DEVELOPMENT REGULATIONS AND HAS NOT BEEN REVIEWED FOR COMPLIANCE WITH RECORDING REQUIREMENTS FOR PLATS.

THIS AS-BUILT IS
FOR CODE COMPLIANCE.
NOT FOR SALES OR
CONVEYANCE

CHARLES R. PIRATZKY



7-29-25

DATE

DATE: JULY 22, 2025

Q:\FieldLoc\DUNCANCREEK34 35 37FDN.txt

RWK, PA
ENGINEERING ~ SURVEYING
CORPORATE LICENSE: C-1771
101 W. MAIN ST., SUITE 202
GARNER, NC 27529
PHONE (919) 779-4854
FAX (919) 779-4056

0:\DUNCAN'S CREEK\DNCK35\DNCK 35.DWG