

PRELIMINARY PLOT PLAN FOR

MUNGO HOMES

LOT 68, LEANDER LEE PRESERVE SUBDIVISION

122 HARRIETTE COURT

REF: P.B. 2025, PG. 267

LILLINGTON TOWNSHIP

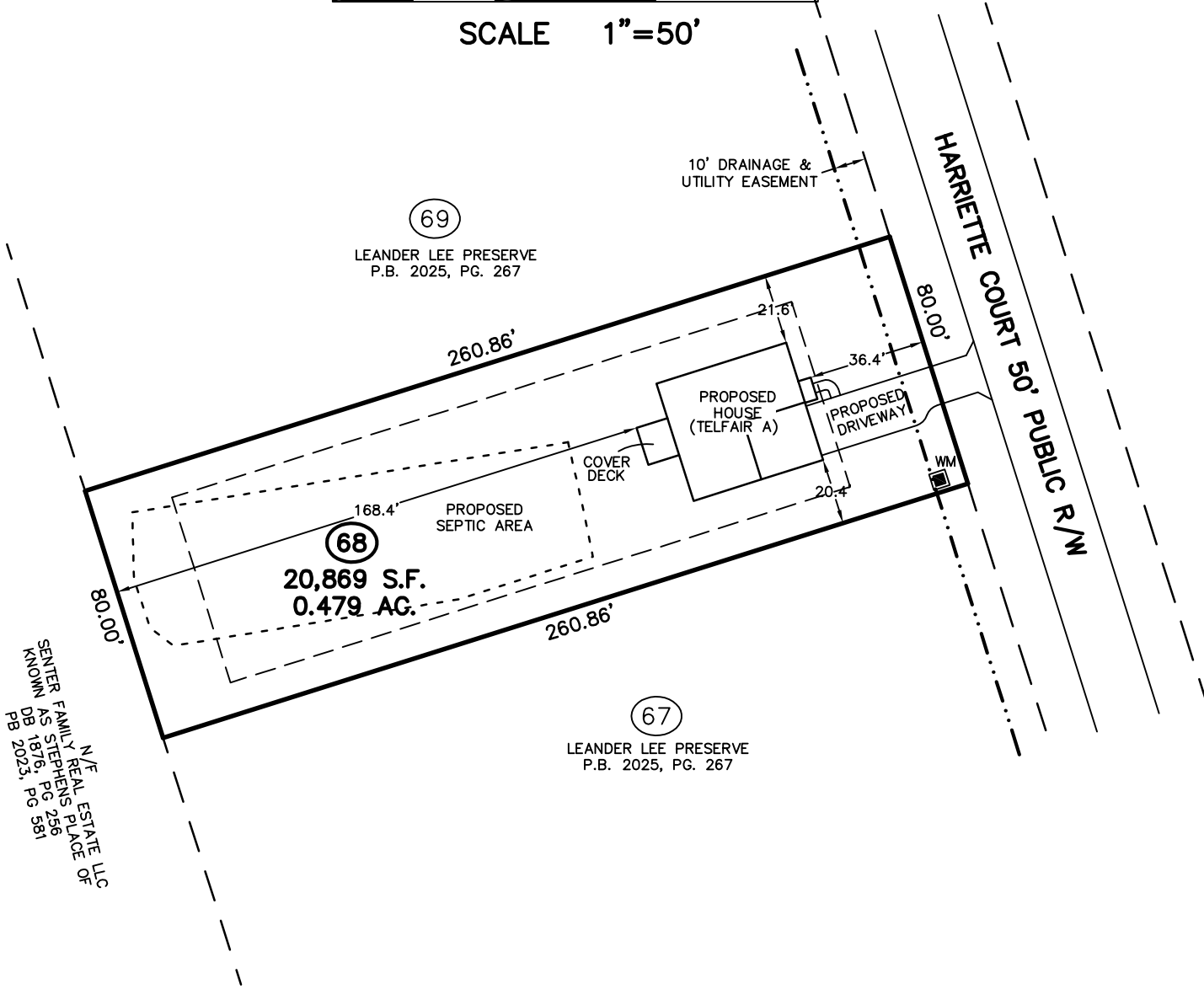
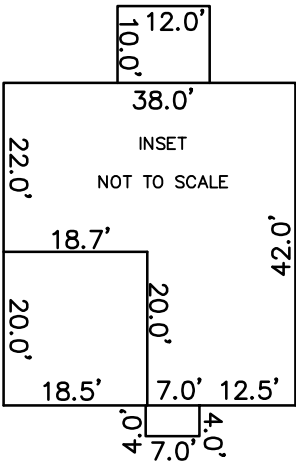
HARNETT COUNTY, NORTH CAROLINA

MAY 12, 2025

ZONED RA-20R



SCALE 1"=50'



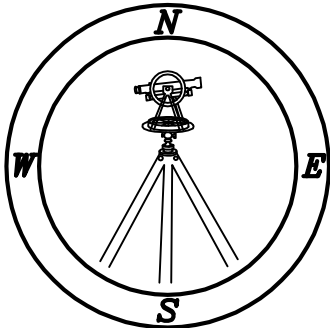
N/F
SENIOR FAMILY REAL ESTATE LLC
AS STEPHENS PLACE
DB 1876, PG 256
PB 2023, PG 561

IMPERVIOUS SURFACE TABLE

HOUSE	1,624 S.F.
COVER DECK	120 S.F.
DRIVEWAY	624 S.F.
SIDEWALKS	30 S.F.
MISC/UTILITIES	9 S.F.
TOTAL IMPERVIOUS AREA	2,407 S.F.
TOTAL LOT AREA	20,869 S.F.
PERCENTAGE OF IMPERVIOUS AREA	11.53 %

TOTAL CONCRETE & LANDSCAPE	
CONCRETE	846 S.F.
LANDSCAPE	19,470 S.F.

THIS SURVEYOR DOES NOT WARRANTY THE ACCURACY OF ARCHITECTURAL DIMENSIONS. THEY ARE TO BE VERIFIED BY THE CONTRACTOR.



CMP

Professional Land Surveyors
C-1525

333 S. White Street
Post Office Box 1253
Wake Forest, N.C. 27588
(919)556-3148

NOTES:
-THIS PLAN DOES NOT REFLECT AN ACTUAL SURVEY. IT IS A PRELIMINARY PLAN AND SHOULD BE USED FOR ITS INTENDED PURPOSE ONLY.
-NOT FOR RECORDATION, CONVEYANCES, OR SALES.