

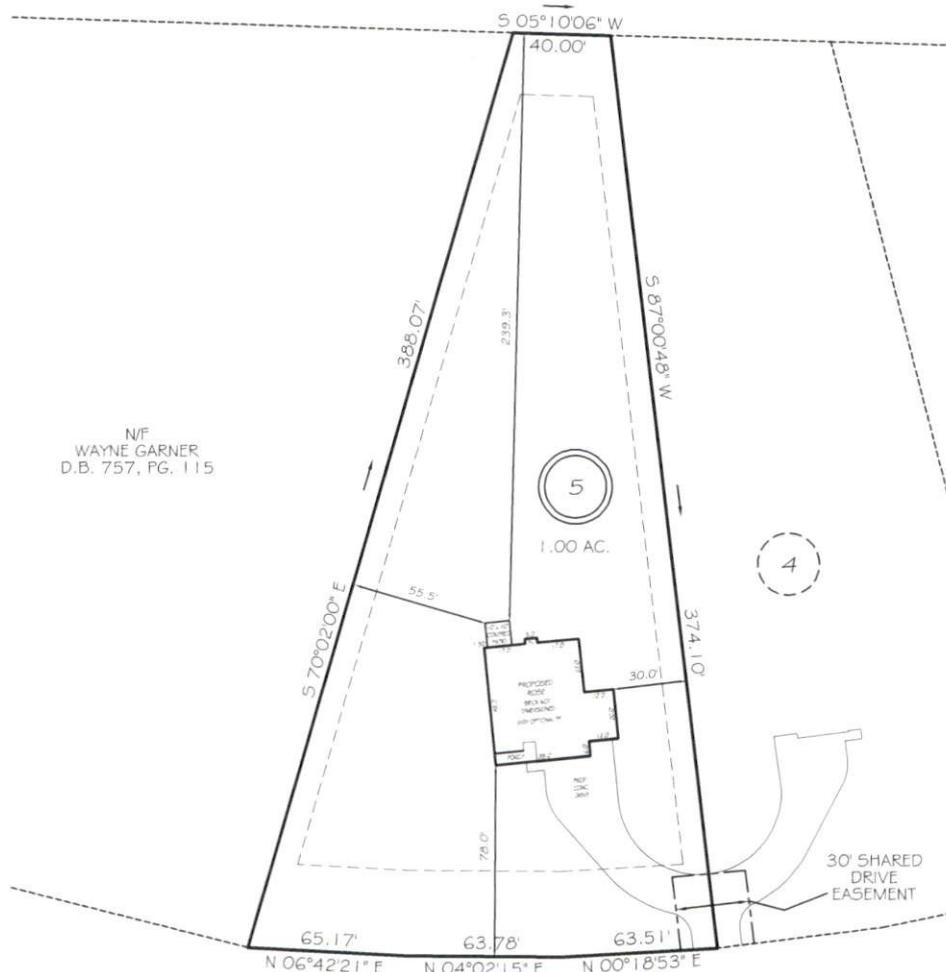
I, MICHAEL P. GRIFFIN, certify that under my direction and supervision this map was drawn from an actual field survey; that the error of closure of the survey as calculated by coordinates is 1: 10,000+; that the area shown hereon was calculated by coordinates. Dashed lines shown hereon were not surveyed.

Witness my hand and seal this day of MONTH 2025.

BM 2025 PAGE 215  
HARNETT CO. REGISTRY

N/F  
RICKY D. HOPPER  
D.B. 1288, PG. 984

N/F  
WAYNE GARNER  
D.B. 757, PG. 115



PONDEROSA ROAD

S.R. 1201  
60' PUBLIC R/W

ZONED RA-20R  
SETBACKS

FRONT 35'  
REAR 25'  
SIDE 10'  
CORNER SIDE 20'

REVISION: MOVE FORWARD 5/1/25  
REVISION: MOVE HOUSE 4/30/25



GRAPHIC SCALE  
1" = 60'

10' x 70' SITE TRIANGLE EASEMENTS AT EACH DRIVEWAY FOR ADEQUATE SITE DISTANCE

**PRELIMINARY**  
NOT FOR RECORDATION,  
SALES OR CONVEYANCE

**LEGEND**  
EIP EXISTING IRON PIPE FES FLARED END SECTION  
RBS REBAR SET WM WATER METER  
R/W RIGHT OF WAY CO CLEAN OUT  
N/F NOW OR FORMERLY FH FIRE HYDRANT  
EIS EXISTING IRON STAKE CB CATCH BASIN



GRIFFIN LAND SURVEYING, INC.

P.O. BOX 148  
FUQUAY-VARINA, NC 27526  
(919) - 567-1963

FIRM LIC # C-1345

PLOT PLAN  
FOR

**A & G RESIDENTIAL**

MINOR SUBDIVISION SURVEY FOR:  
ATLANTIS HOME BUYERS  
434 FAYETTEVILLE STREET # 1140  
LOT 5

PONDEROSA ROAD  
CAMERON, N.C.

HARNETT COUNTY JOHNSONVILLE TOWNSHIP

DRAWN BY KDF

DATE 4/28/25

CHECKED BY MPG

SCALE 1" = 60'