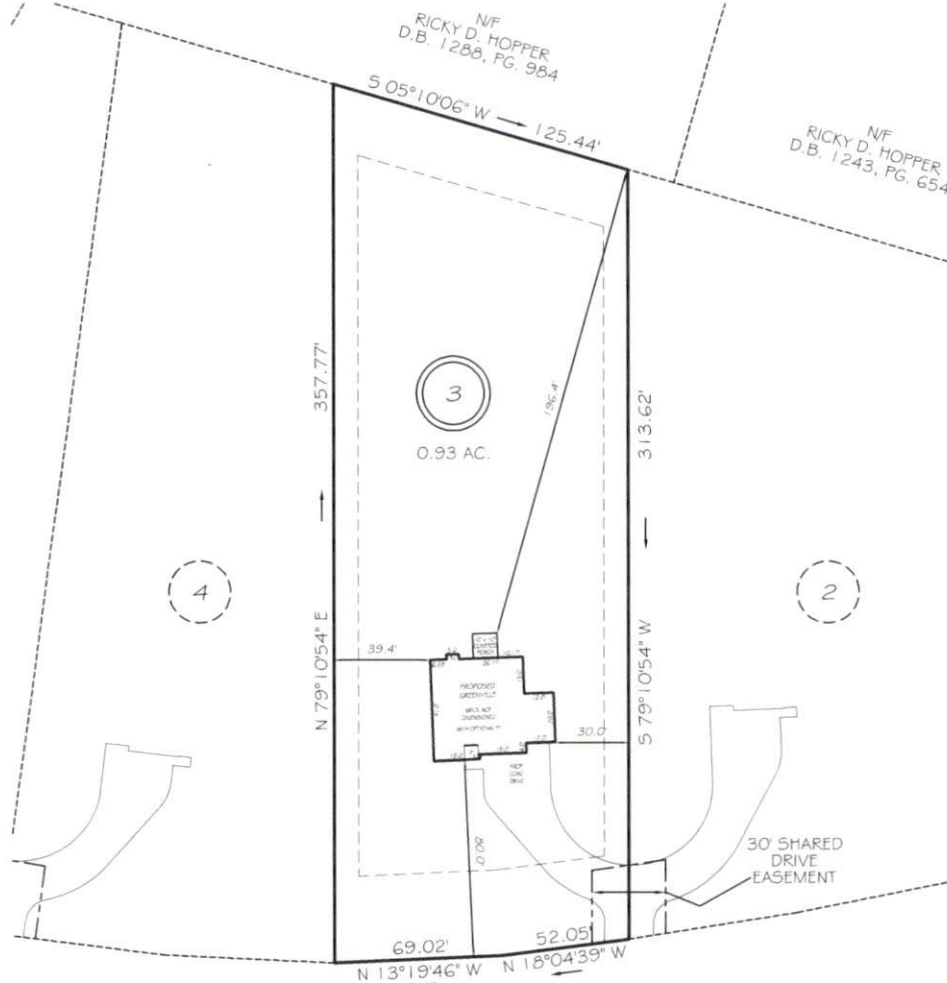


I, MICHAEL P. GRIFFIN, certify that under my direction and supervision this map was drawn from an actual field survey; that the error of closure of the survey as calculated by coordinates is 1:10,000+; that the area shown hereon was calculated by coordinates. Dashed lines shown hereon were not surveyed.

Witness my hand and seal this day of MONTH 2025.

BM 2025 PAGE 215
HARNETT CO. REGISTRY



PONDEROSA ROAD
S.R. 1201
60' PUBLIC RW

REVISION: MOVE HOUSE 4/30/25

10' x 70' SITE TRIANGLE EASEMENTS AT EACH DRIVEWAY FOR ADEQUATE SITE DISTANCE

PRELIMINARY
NOT FOR RECORDATION,
SALES OR CONVEYANCE

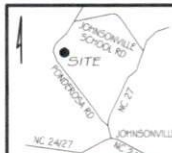
EIP EXISTING IRON PIPE FES FLARED END SECTION
RBS REBAR SET WM WATER METER
RW RIGHT OF WAY CO CLEAN OUT
N/F NOW OR FORMERLY FH FIRE HYDRANT
EIS EXISTING IRON STAKE CB CATCH BASIN



GRAPHIC SCALE
1"=60'

LEGEND

ZONED RA-20R
SETBACKS
FRONT 35'
REAR 25'
SIDE 10'
CORNER SIDE 20'



GRiffin LAND SURVEYING, INC.
P.O. BOX 148
FUQUAY-VARINA, NC 27526
(919) - 567-1963
FIRM LIC.# C-1345

DRAWN BY KDF DATE 4/28/25
CHECKED BY MPG SCALE 1" = 60'

PLOT PLAN
FOR
A & G RESIDENTIAL
MINOR SUBDIVISION SURVEY FOR:
ATLANTIS HOME BUYERS
434 FAYETTEVILLE STREET # 1140
RALEIGH, NC 27601
LOT 3
PONDEROSA ROAD
CAMERON, N.C.
HARNETT COUNTY JOHNSONVILLE TOWNSHIP