

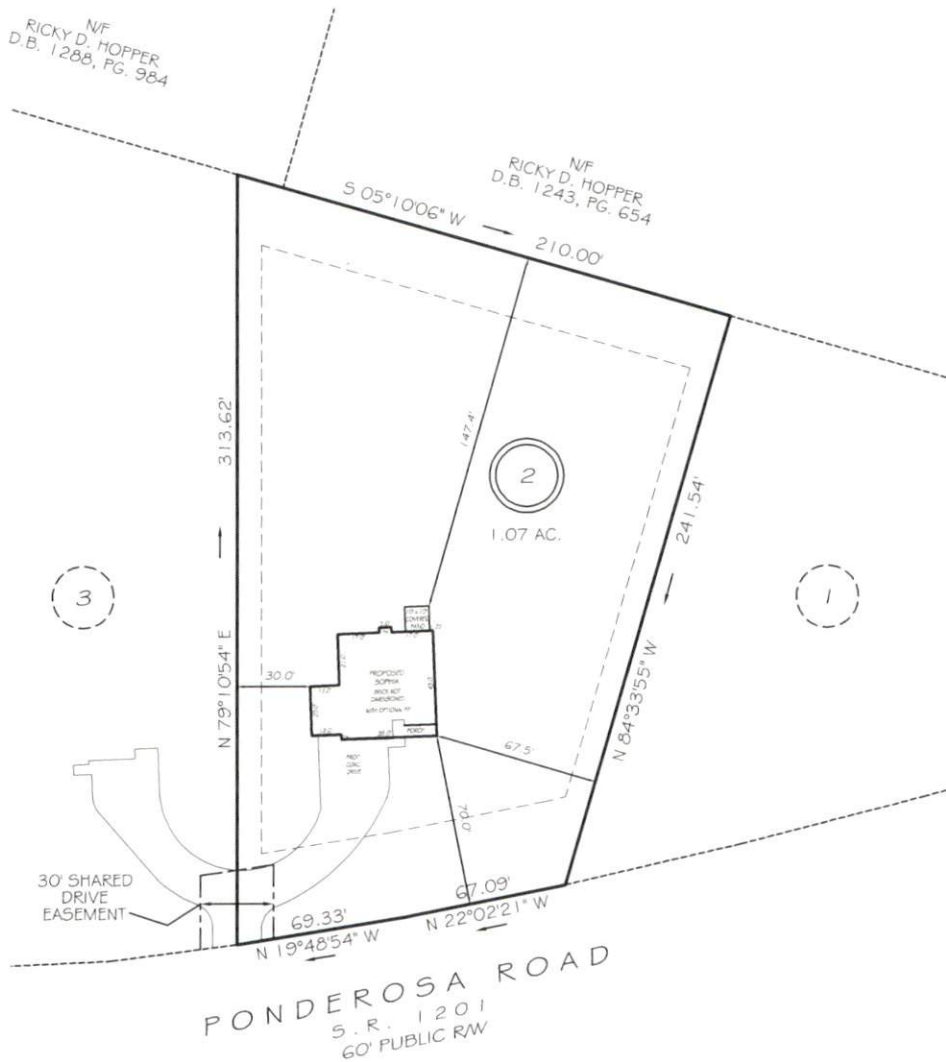
I, MICHAEL P. GRIFFIN, certify that under my direction and supervision this map was drawn from an actual field survey; that the error of closure of the survey as calculated by coordinates is 1:10,000+; that the area shown hereon was calculated by coordinates. Dashed lines shown hereon were not surveyed.

Witness my hand and seal this day of MONTH 2025.

BM 2025 PAGE 215
HARNETT CO. REGISTRY

NF
RICKY D. HOPPER
D.B. 1288, PG. 984

NF
RICKY D. HOPPER
D.B. 1243, PG. 654



PONDEROSA ROAD
S.R. 1201
60' PUBLIC RW

REVISION: MOVE FORWARD 5/1/25
REVISION: MOVE HOUSE 4/30/25

10' x 70' SITE TRIANGLE EASEMENTS AT EACH DRIVEWAY FOR ADEQUATE SITE DISTANCE

PRELIMINARY
NOT FOR RECORDATION,
SALES OR CONVEYANCE



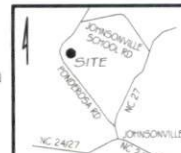
GRAPHIC SCALE
1"=60'

LEGEND

EIP	EXISTING IRON PIPE	FES	FLARED END SECTION
RBS	REBAR SET	WM	WATER METER
R/W	RIGHT OF WAY	CO	CLEAN OUT
NF	NOW OR FORMERLY	FH	FIRE HYDRANT
EIS	EXISTING IRON STAKE	CB	CATCH BASIN

ZONED RA-20R
SETBACKS

FRONT 35'
REAR 25'
SIDE 10'
CORNER SIDE 20'



GRIFFIN LAND SURVEYING, INC.

P.O. BOX 148
FUQUAY-VARINA, NC 27526
(919) 567-1963

FIRM LIC # C-1345

DRAWN BY **KDF**

DATE **4/28/25**

CHECKED BY **MPG**

SCALE **1" = 60'**

PLOT PLAN
FOR

A & G RESIDENTIAL

MINOR SUBDIVISION SURVEY FOR:
ATLANTIS HOME BUYERS
434 FAYETTEVILLE STREET # 1140
RALEIGH, NC 27601

LOT 2

PONDEROSA ROAD
CAMERON, N.C.

HARNETT COUNTY JOHNSONVILLE TOWNSHIP