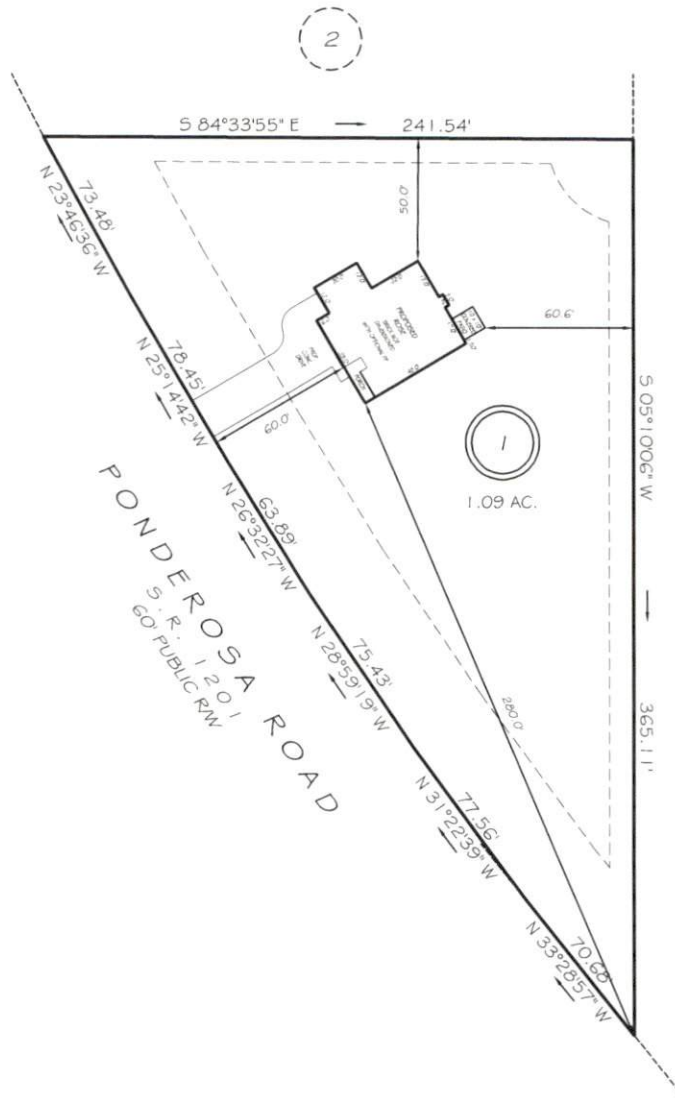


I, MICHAEL P. GRIFFIN, certify that under my direction and supervision this map was drawn from an actual field survey; that the error of closure of the survey as calculated by coordinates is 1:10,000+; that the area shown hereon was calculated by coordinates. Dashed lines shown hereon were not surveyed.

Witness my hand and seal this day of MONTH 2025.

BM 2025 PAGE 215  
HARNETT CO. REGISTRY



N/F  
RICKY D. HOPPER  
D.B. 1243, PG. 654

ZONED RA-20R  
SETBACKS

FRONT 35'  
REAR 25'  
SIDE 10'  
CORNER SIDE 20'



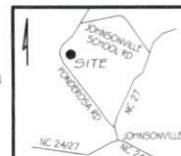
GRAPHIC SCALE  
1" = 60'

10' x 70' SITE TRIANGLE EASEMENTS AT EACH  
DRIVEWAY FOR ADEQUATE SITE DISTANCE

**PRELIMINARY**  
NOT FOR RECORDATION,  
SALES OR CONVEYANCE

**LEGEND**

EIP	EXISTING IRON PIPE	FES	FLARED END SECTION
RBS	REBAR SET	WM	WATER METER
RAW	RIGHT OF WAY	CO	CLEAN OUT
N/F	NOW OR FORMERLY	FH	FIRE HYDRANT
EIS	EXISTING IRON STAKE	CB	CATCH BASIN



**GRIFFIN LAND SURVEYING, INC.**

P.O. BOX 148  
FUQUAY-VARINA, NC 27526  
(919) 567-1963

FIRM LIC. # C-1345

**PLOT PLAN**  
FOR

**A & G RESIDENTIAL**

MINOR SUBDIVISION SURVEY FOR:  
ATLANTIS HOME BUYERS  
434 FAYETTEVILLE STREET # 1140  
RALEIGH, NC 27601  
LOT 1

PONDEROSA ROAD  
CAMERON, N.C.

HARNETT COUNTY JOHNSONVILLE TOWNSHIP

DRAWN BY **KDF**

DATE **4/28/25**

CHECKED BY **MPG**

SCALE **1" = 60'**