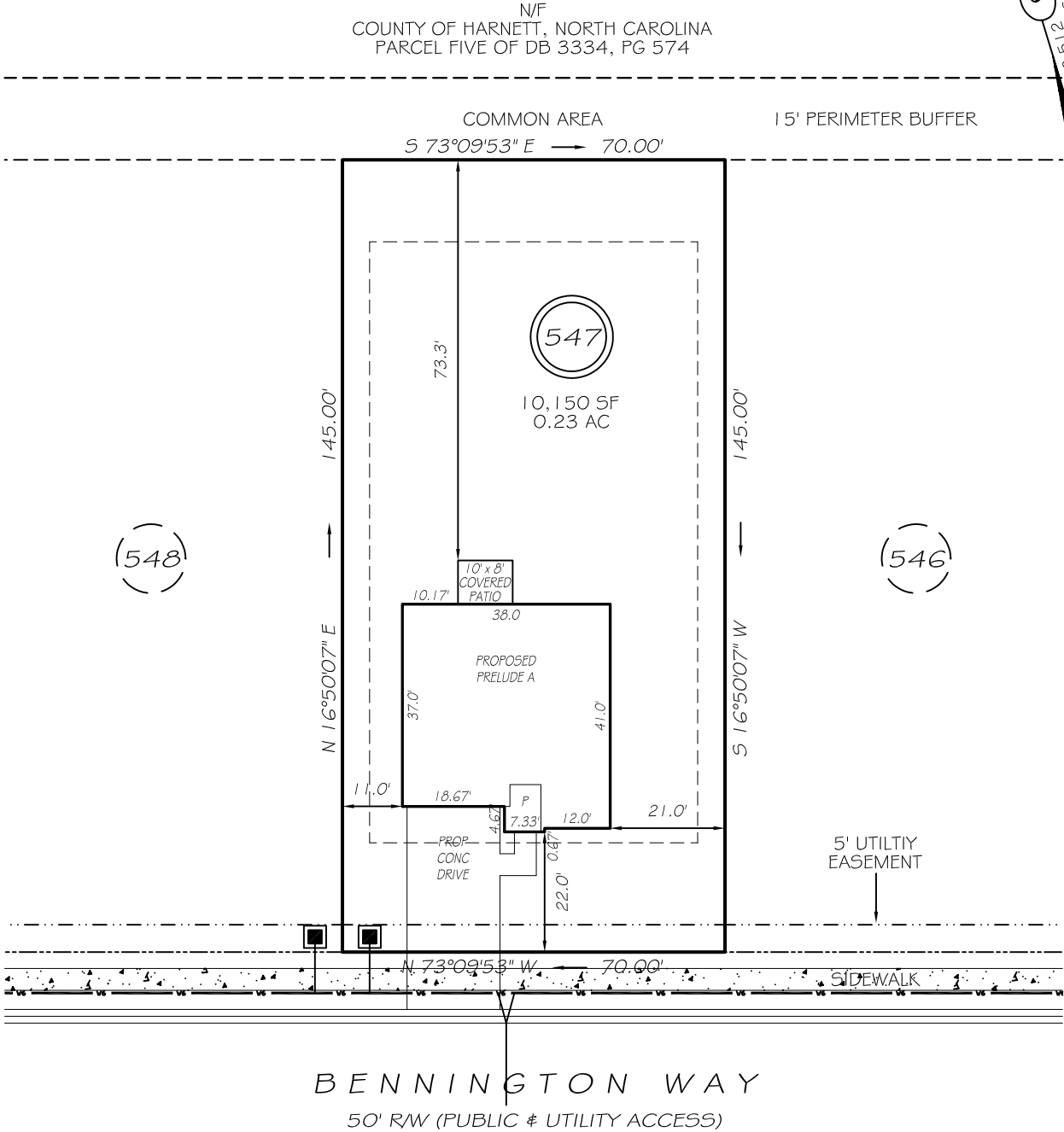
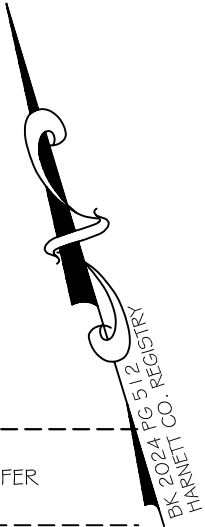


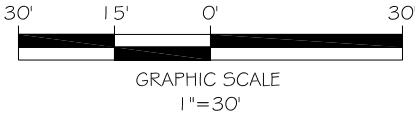
I, MICHAEL P. GRIFFIN, certify that under my direction and supervision this map was drawn from an actual field survey; that the error of closure of the survey as calculated by coordinates is 1: 10,000+; that the area shown hereon was calculated by coordinates. Dashed lines shown hereon were not surveyed.  
Witness my hand and seal this day of MONTH 2025.



REVISION: MOVE LEFT 5/7/25

IMPERVIOUS AREAS

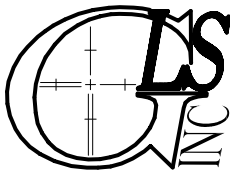
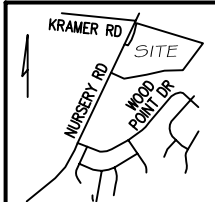
HOUSE	1488 SQ. FT.
DRIVE & WALKS	496 SQ. FT.
COVERED PATIO	80 SQ. FT.
TOTAL	2064 SQ. FT.
ALLOWED	3000 SQ. FT.



ZONING: RA-20R  
SETBACKS  
FRONT 20'  
CORNER SIDE 20'  
REAR 15'  
SIDE 5'

PRELIMINARY  
NOT FOR RECORDATION,  
SALES OR CONVEYANCE

EIP	EXISTING IRON PIPE	FES	FLARED END SECTION
RBS	REBAR SET	WM	WATER METER
R/W	RIGHT OF WAY	CO	CLEAN OUT
N/F	NOW OR FORMERLY	FH	FIRE HYDRANT
EIS	EXISTING IRON STAKE	CB	CATCH BASIN



GRIFFIN LAND SURVEYING, INC.

P. O. BOX 148  
FUQUAY-VARINA, NC 27526  
(919) - 567 - 1963

FIRM LIC.# C-1345

PLOT PLAN  
FOR

DREAM FINDERS HOMES LLC

CREEKSIDE OAKS  
NORTH SUBDIVISION  
LOT 547

BENNINGTON WAY

LILLINGTON, N.C.

HARNETT COUNTY ANDERSON CREEK TOWNSHIP

DRAWN BY KDF

DATE 4/22/25

CHECKED BY MPG

SCALE 1" = 30'