

# Harnett County Department of Public Health

PERMIT # SFD2505-0167

## Operation Permit

☒ New Installation ☒ Septic Tank ☒ Nitrification Line ☐ Repair ☐ Expansion

PROPERTY LOCATION: 59 Pine Vista Way

Name: (owner) SDH Raleigh

SUBDIVISION Briarwood Bluff

LOT # 19

System Installer: ATR

Basement with plumbing: ☐ Garage ☒ Number of Bedrooms 4 (8 people)

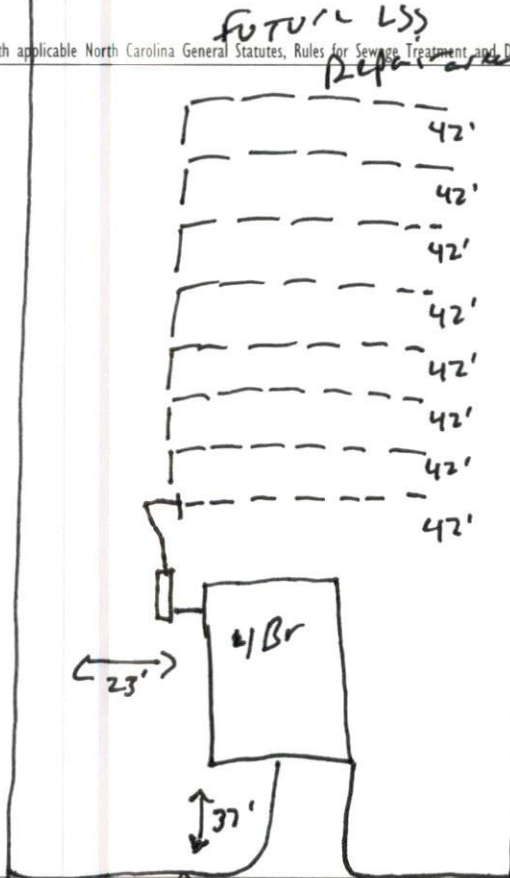
Type of Water Supply: ☐ Community ☒ Public ☐ Well Distance from well \_\_\_\_\_ feet

System Type: TYPE III Types V and VI Systems expire in 5 years.

(In accordance with Table V a)

Owner must contact Health Department 6 months prior to expiration for permit renewal.

This system has been installed in compliance with applicable North Carolina General Statutes, Rules for Sewage Treatment and Disposal, and all conditions of the Improvement Permit and Construction Authorization.



### PERMIT CONDITIONS:

I. Performance: System shall perform in accordance with Rule .1961.

II. Monitoring: As required by Rule .1961.

III. Maintenance: As required by Rule .1961. Other: \_\_\_\_\_

Subsurface system operator required? Yes ☐ No ☒

If yes, see attached sheet for additional operation conditions, maintenance and reporting.

IV. Operation: \_\_\_\_\_

V. Other: \_\_\_\_\_

☐ D-Box ☐ Pump ☐ Alarm ☐ H2O Line ☐ PWR Line

Following are the specifications for the sewage disposal system on the above captioned property.

Type of system: ☐ Conventional ☒ Other 25% reduction IFO Septic Tank: 1000 gallons Pump Tank: \_\_\_\_\_ gallons

Subsurface No. of 8 exact length width of depth of  
Drainage Field ditches of each ditch 42 feet ditches 3 feet ditches 32 inches

French Drain Required: \_\_\_\_\_ Linear feet

Authorized State Agent

Mohd R. R. H.

Date

8-27-25

# Briarwood Bluff Lot 19 System Detail "As Built"

E = 1,276 SF  
 I = 84 SF  
 /ALK = 36 SF  
 WAY = 601 SF  
 = 120 SF  
 MPERVIOUS = 2,117 SF  
 PERVIOUS = 8.86%

NOEL J. MASSEY  
 PIN: 9588-65-8914.000  
 DB: 875 PG: 41

TBACKS

- 20'

PB 2021, PG 336

## Elevation Table

Benchmark = 100'

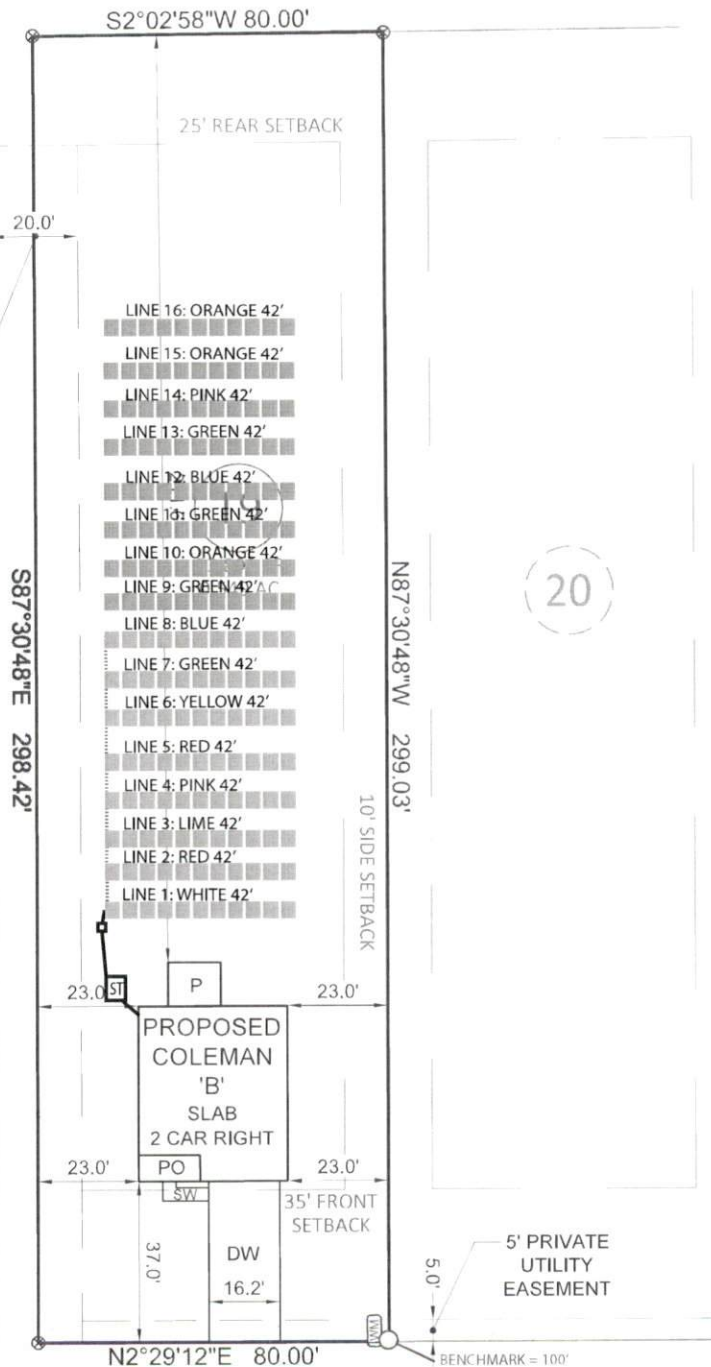
Line 1 = 99.7'  
 Line 2 = 99.4'  
 Line 3 = 99.4'  
 Line 4 = 99.1'  
 Line 5 = 98.5'  
 Line 6 = 98.0  
 Line 7 = 97.7'  
 Line 8 = 97.5'  
 Line 9 = 97.3'  
 Line 10 = 96.8'  
 Line 11 = 96.5'  
 Line 12 = 95.8'  
 Line 13 = 95.0'  
 Line 14 = 94.0'  
 Line 15 = 93.2'

## System Details

Initial:  
 1060 gal Septic Tank  
 0.40 LTAR  
 Lines 1-8 (304')  
 Accepted - Gravity  
 Distribution - Serial  
 Product - Q4 Chamber  
 32" MTD

Repair:  
 1060 gal Septic Tank  
 0.35 LTAR  
 Lines 9-16 (304')  
 Accepted - Gravity  
 Distribution - Serial  
 Product - Q4 Chamber  
 24" MTD

20' PRIVATE  
 DRAINAGE  
 EASEMENT



0' 40'  
 1 inch = 40'



## Legend

Initial  
 Repair  
 Serial

