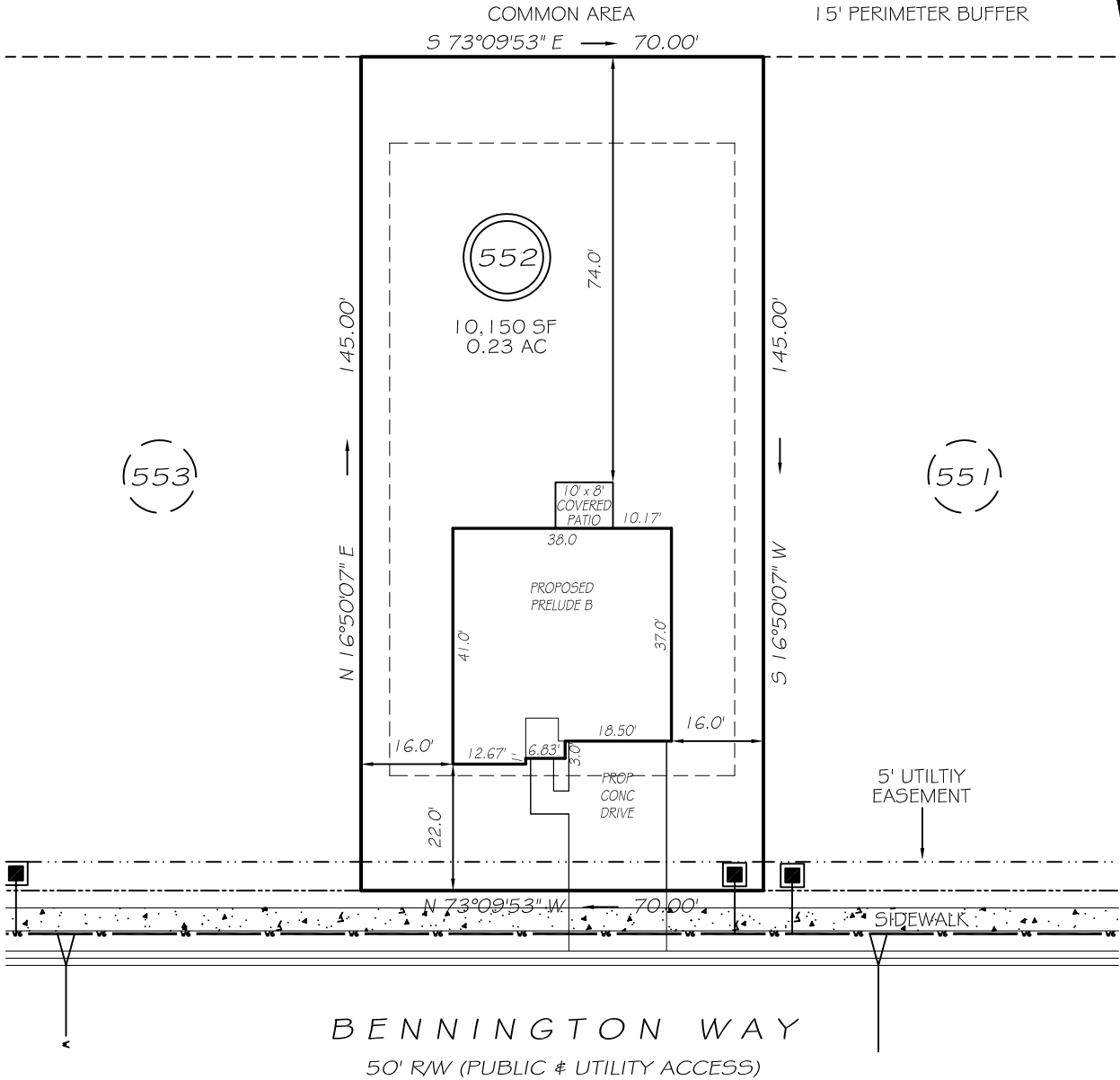


I, MICHAEL P. GRIFFIN, certify that under my direction and supervision this map was drawn from an actual field survey; that the error of closure of the survey as calculated by coordinates is 1: 10,000+; that the area shown hereon was calculated by coordinates. Dashed lines shown hereon were not surveyed.

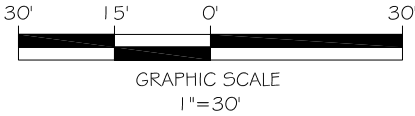
Witness my hand and seal this day of MONTH 2025.

N/F
COUNTY OF HARNETT, NORTH CAROLINA
PARCEL FIVE OF DB 3334, PG 574

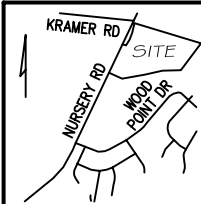


IMPERVIOUS AREAS

HOUSE	1477 SQ. FT.
DRIVE & WALKS	491 SQ. FT.
COVERED PATIO	80 SQ. FT.
TOTAL	2048 SQ. FT.
ALLOWED	3000 SQ. FT.

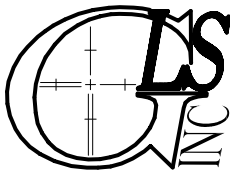


ZONING: RA-20R
SETBACKS
FRONT 20'
CORNER SIDE 20'
REAR 15'
SIDE 5'



PRELIMINARY
NOT FOR RECORDATION,
SALES OR CONVEYANCE

EIP	EXISTING IRON PIPE	FES	FLARED END SECTION
RBS	REBAR SET	WM	WATER METER
R/W	RIGHT OF WAY	CO	CLEAN OUT
N/F	NOW OR FORMERLY	FH	FIRE HYDRANT
EIS	EXISTING IRON STAKE	CB	CATCH BASIN



GRIFFIN LAND SURVEYING, INC.

P. O. BOX 148
FUQUAY-VARINA, NC 27526
(919) - 567 - 1963

FIRM LIC.# C-1345

PLOT PLAN
FOR

DREAM FINDERS HOMES LLC

CREEKSIDE OAKS
NORTH SUBDIVISION
LOT 552

BENNINGTON WAY

LILLINGTON, N.C.

HARNETT COUNTY ANDERSON CREEK TOWNSHIP

DRAWN BY KDF

DATE 4/22/25

CHECKED BY MPG

SCALE 1" = 30'