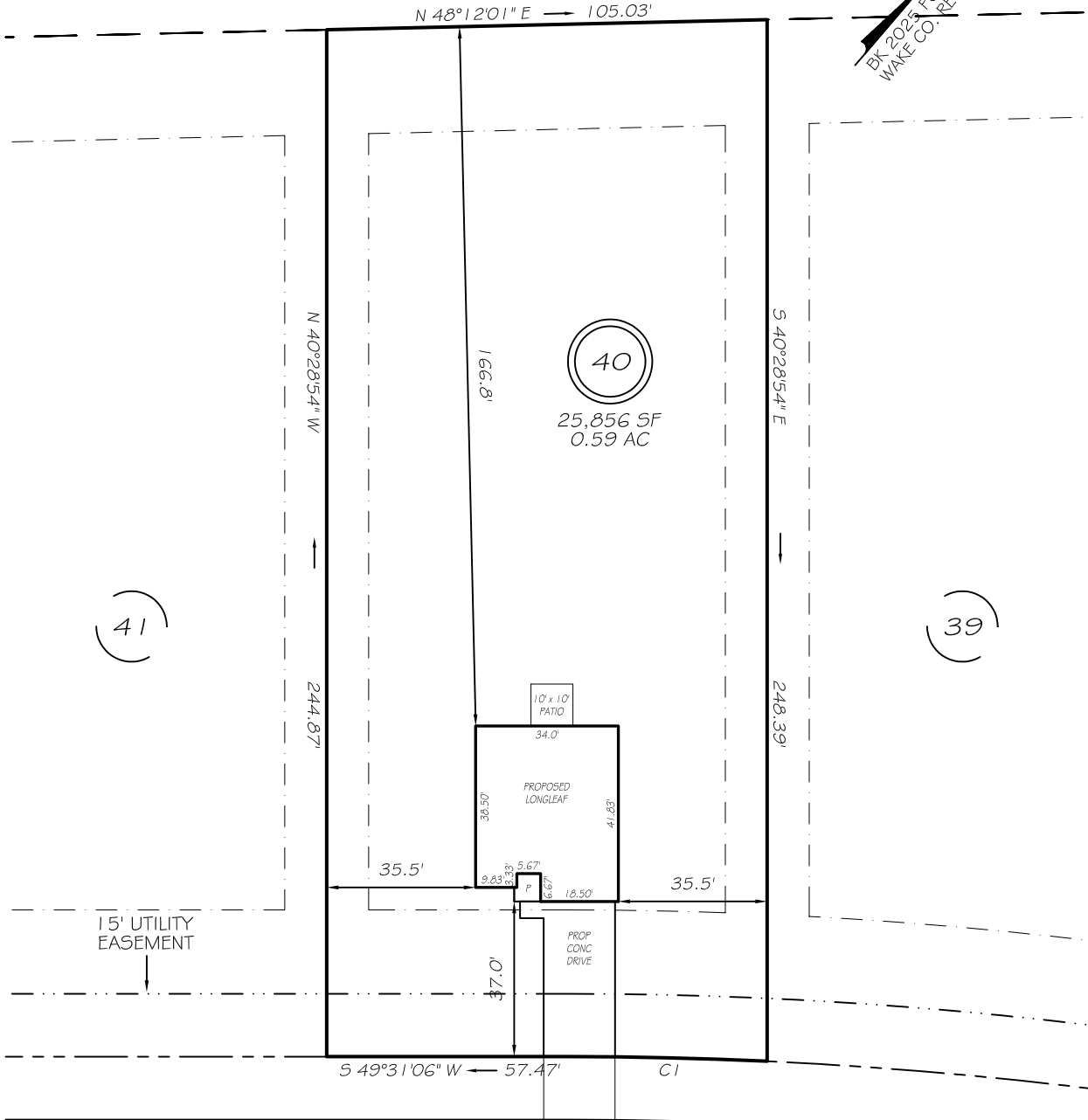
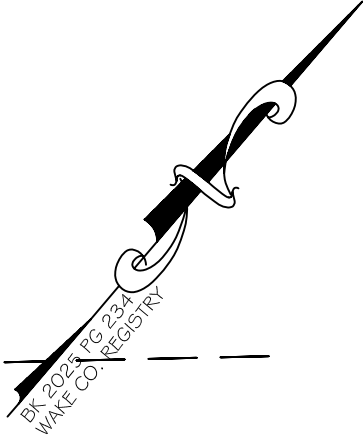


I, MICHAEL P. GRIFFIN, certify that under my direction and supervision this map was drawn from an actual field survey; that the error of closure of the survey as calculated by coordinates is 1: 10,000+; that the area shown hereon was calculated by coordinates. Dashed lines shown hereon were not surveyed.

Witness my hand and seal this day of MONTH 2025.

N/F
ROBERT A. SCANTLIN & WIFE,
DIANA L. SCANTLIN
DB 4036, PG 313
PC 2010, PG 240



BOSTON RIVER DRIVE

50' R/W (PUBLIC & UTILITY ACCESS)

IMPERVIOUS AREAS

HOUSE	1392 SQ. FT.
DRIVE & WALKS	652 SQ. FT.
PATIO	100 SQ. FT.
TOTAL	2144 SQ. FT.
ALLOWED	5767 SQ. FT.

SETBACKS

FRONT	35'
REAR	25'
SIDE	10'
CORNER SIDE	20'



GRAPHIC SCALE
1"=40'

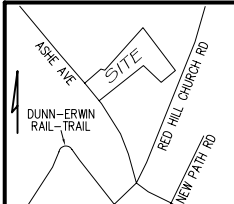
CI R=1025.00' L=47.54' S50°50'49"W 47.54'

P R E L I M I N A R Y

NOT FOR RECORDATION,
SALES OR CONVEYANCE

LEGEND

EIP	EXISTING IRON PIPE	FES	FLARED END SECTION
RBS	REBAR SET	WM	WATER METER
R/W	RIGHT OF WAY	CO	CLEAN OUT
N/F	NOW OR FORMERLY	FH	FIRE HYDRANT
EIS	EXISTING IRON STAKE	CB	CATCH BASIN



GRIFFIN LAND SURVEYING, INC.

P. O. BOX 148
FUQUAY-VARINA, NC 27526
(919) - 567 - 1963

FIRM LIC.# C-1345

PLOT PLAN
FOR
**BEN STOUT
CONSTRUCTION**
ILA'S WAY
LOT 40

BOSTON RIVER DRIVE

ERWIN, N.C.

HARNETT COUNTY AVERASBORO TOWNSHIP

DRAWN BY **KDF**

DATE **4/14/25**

CHECKED BY **MPG**

SCALE **1" = 40'**