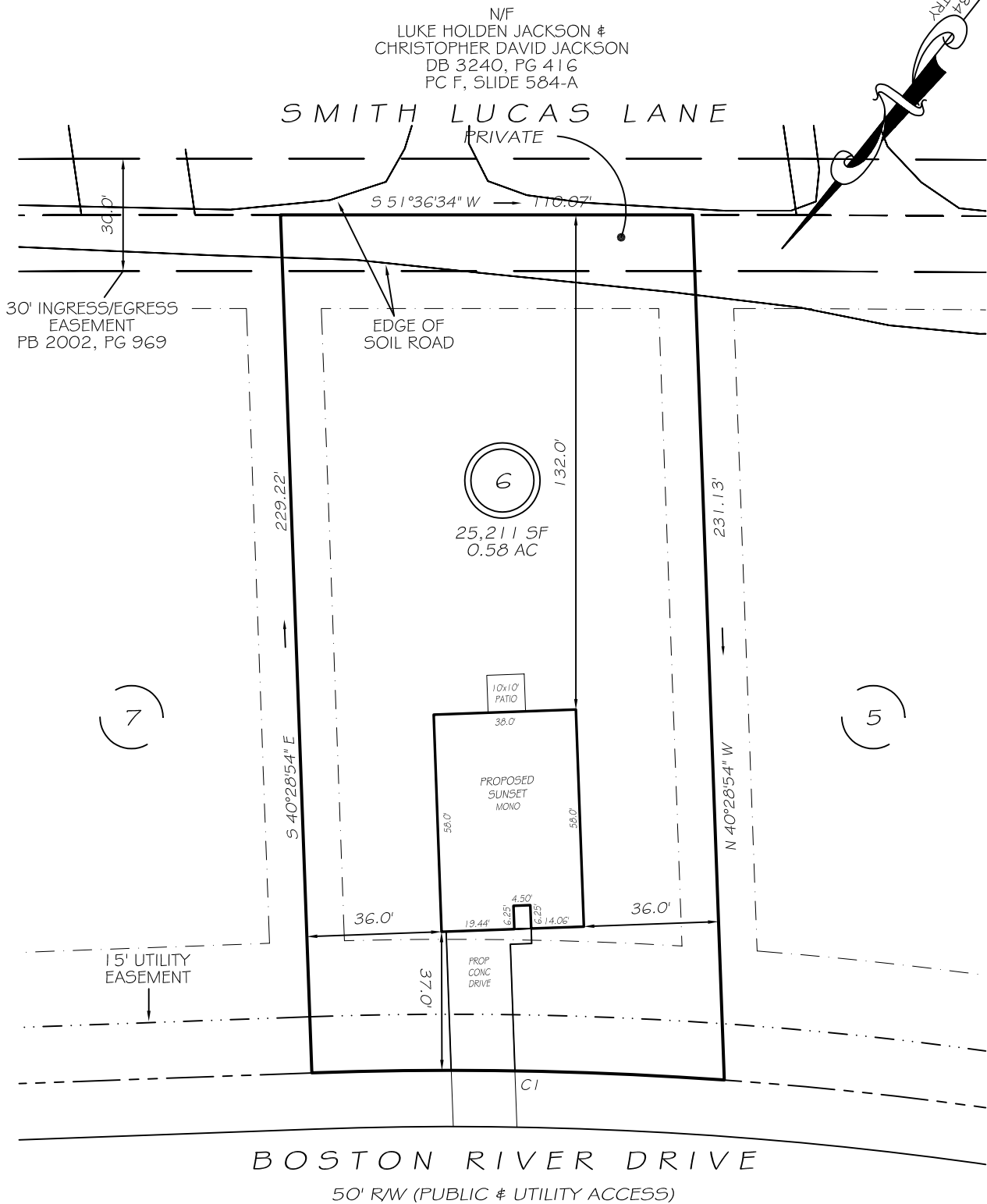


I, MICHAEL P. GRIFFIN, certify that under my direction and supervision this map was drawn from an actual field survey; that the error of closure of the survey as calculated by coordinates is 1: 10,000+; that the area shown hereon was calculated by coordinates. Dashed lines shown hereon were not surveyed.

Witness my hand and seal this day of MONTH 2025.

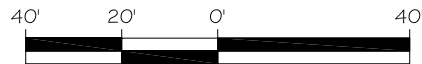


IMPERVIOUS AREAS

HOUSE	2204 SQ. FT.
DRIVE & WALKS	659 SQ. FT.
PATIO	100 SQ. FT.
TOTAL	2963 SQ. FT.
ALLOWED	5767 SQ. FT.

SETBACKS

FRONT	35'
REAR	25'
SIDE	10'
CORNER SIDE	20'



GRAPHIC SCALE  
1"=40'

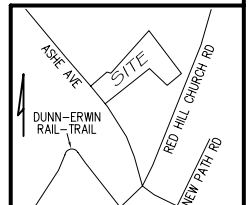
CI R=1025.00' L=110.21' N52°35'55"E 110.16'

PRELIMINARY

NOT FOR RECORDATION,  
SALES OR CONVEYANCE

LEGEND

EIP	EXISTING IRON PIPE	FES	FLARED END SECTION
RBS	REBAR SET	WM	WATER METER
R/W	RIGHT OF WAY	CO	CLEAN OUT
N/F	NOW OR FORMERLY	FH	FIRE HYDRANT
EIS	EXISTING IRON STAKE	CB	CATCH BASIN



GRIFFIN LAND SURVEYING, INC.

P. O. BOX 148  
FUQUAY-VARINA, NC 27526  
(919) - 567 - 1963

FIRM LIC.# C-1345

PLOT PLAN  
FOR

BEN STOUT  
CONSTRUCTION

ILA'S WAY

LOT 6

BOSTON RIVER DRIVE

ERWIN, N.C.

HARNETT COUNTY AVERASBORO TOWNSHIP

DRAWN BY KDF

DATE 4/14/25

CHECKED BY MPG

SCALE 1" = 40'