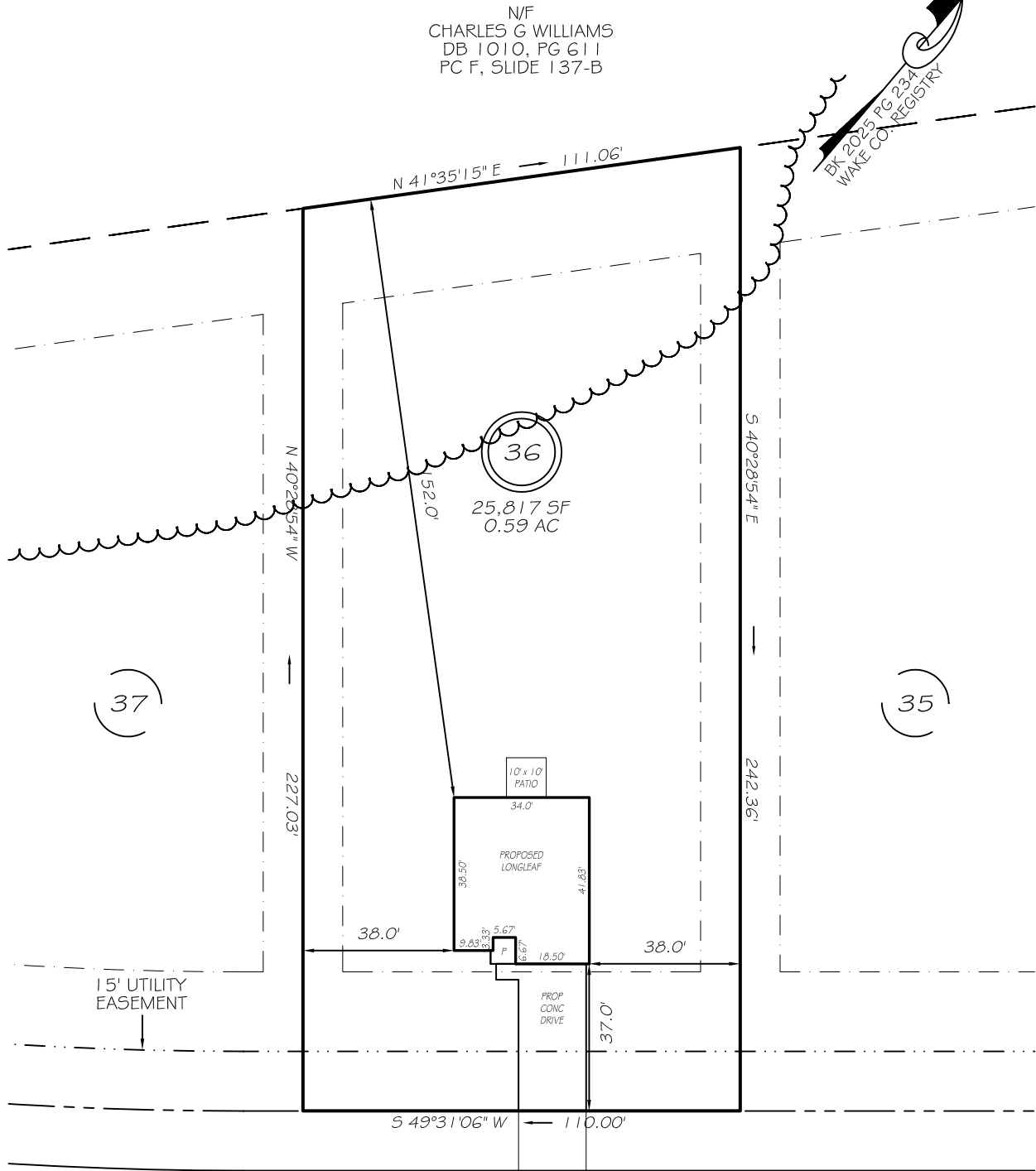


I, MICHAEL P. GRIFFIN, certify that under my direction and supervision this map was drawn from an actual field survey; that the error of closure of the survey as calculated by coordinates is 1: 10,000+ ; that the area shown hereon was calculated by coordinates. Dashed lines shown hereon were not surveyed.

Witness my hand and seal this day of MONTH 2025.



IMPERVIOUS AREAS

HOUSE	1392 SQ. FT.
DRIVE & WALKS	651 SQ. FT.
PATIO	100 SQ. FT.
TOTAL	2143 SQ. FT.
ALLOWED	5767 SQ. FT.

50' R/W (PUBLIC & UTILITY ACCESS)



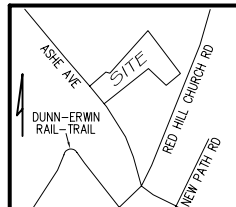
GRAPHIC SCALE  
1"=40'

SETBACKS

FRONT	35'
REAR	25'
SIDE	10'
CORNER SIDE	20'

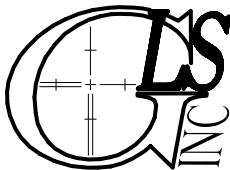
LEGEND

EIP	EXISTING IRON PIPE	FES	FLARED END SECTION
RBS	REBAR SET	WM	WATER METER
R/W	RIGHT OF WAY	CO	CLEAN OUT
N/F	NOW OR FORMERLY	FH	FIRE HYDRANT
EIS	EXISTING IRON STAKE	CB	CATCH BASIN



P R E L I M I N A R Y

NOT FOR RECORDATION,  
SALES OR CONVEYANCE



GRIFFIN LAND SURVEYING, INC.

P. O. BOX 148  
FUQUAY-VARINA, NC 27526  
(919) - 567 - 1963

FIRM LIC.# C-1345

DRAWN BY **KDF**

DATE **4/14/25**

CHECKED BY **MPG**

SCALE **1" = 40'**

PLOT PLAN  
FOR  
**BEN STOUT  
CONSTRUCTION**  
ILA'S WAY

**LOT 36**  
BOSTON RIVER DRIVE  
ERWIN, N.C.

HARNETT COUNTY AVERASBORO TOWNSHIP