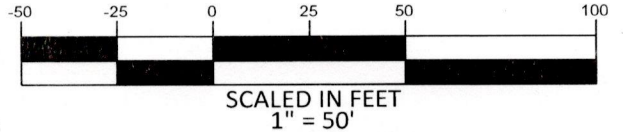


Notes:

- This plat is for location purposes only. Builder should verify foundation information with plans before construction begins.
- There is no USCE or NCGS monument within 2000' of this site.
- The subject property is not within a special flood hazard area as determined by the Department of Housing and Urban Development.
- The easement information shown hereon was obtained from the recorded plat. No updated title search was performed by the surveyor.
- All distances are measured in feet.
- This map reflects the information contained on the Record Plat and does not represent compliance with the Restrictive Covenants.

#### LEGEND

- EXISTING IRON PIPE
- CURVE PT / PC
- SURVEYED LINE
- EASEMENT LINE
- ADJOINER
- SURVEYED BY OTHERS



SCALED IN FEET  
1" = 50'

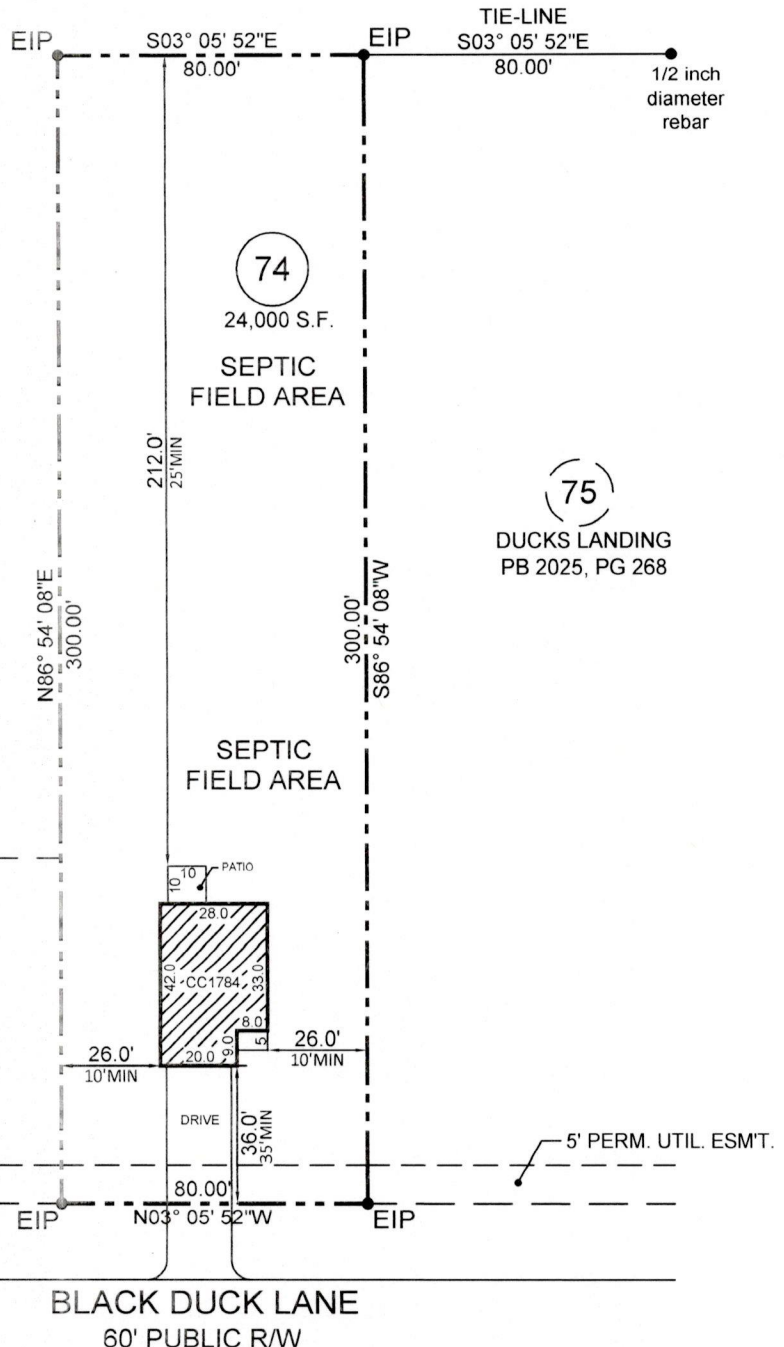
MAP NOT DRAWN IN ACCORDANCE WITH GS 47-30

\*\*NOT FOR CONVEYANCES OR SALES\*\*

MOORE HL PROPERTIES, INC.  
DB 4235, PG 326  
PIN# 0527-51-7533.000

FUTURE  
DEVELOPMENT

PLAT NORTH



MOORE HL PROPERTIES, INC.  
DB 4235, PG 326  
PIN# 0527-51-7533.000

FUTURE  
DEVELOPMENT

(73)  
DUCKS LANDING  
PB 2025, PG 268

5' PERM. UTIL. ESM'T.

(75)  
DUCKS LANDING  
PB 2025, PG 268

5' PERM. UTIL. ESM'T.

#### ZONED RA-20R :

FRONT	35' MIN
SIDE (EXT)	20' MIN
SIDE (INT)	10' MIN
SIDE (COR R/W)	20' MIN
REAR	25' MIN

## - PLOT PLAN FOR - CAVINESS & CATES BUILDING & DEVELOPMENT, CO. - SUBDIVISION - DUCKS LANDING

ANDERSON CREEK TOWNSHIP  
HARNETT COUNTY  
NORTH CAROLINA

JULY 17, 2025  
SCALE 1" = 50'  
FIELD BOOK:

REFERENCE  
PB 2025, PG 268

HARNETT COUNTY NORTH CAROLINA REGISTRY

ENGINEERS  
PLANNERS  
SURVEYORS  
MOORMAN, KIZER & REITZEL, INC.



115 broadfoot ave.  
p.o. box 53774  
fayetteville, n.c., 28305  
phone 910-484-5191  
fax 910-484-0388  
LICENSE #: F-0106

PROF. SURVEYOR NO. L-3196 REVISED 7-17-25