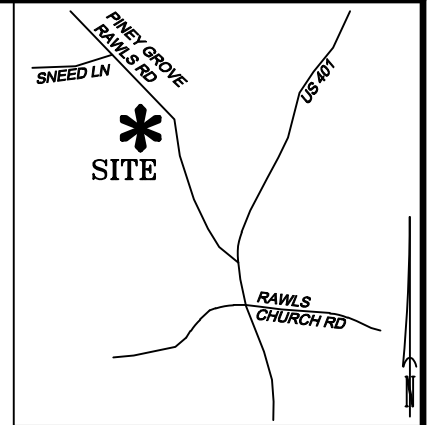
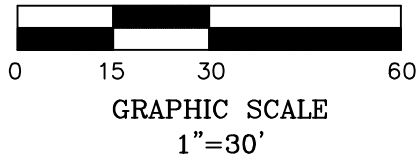
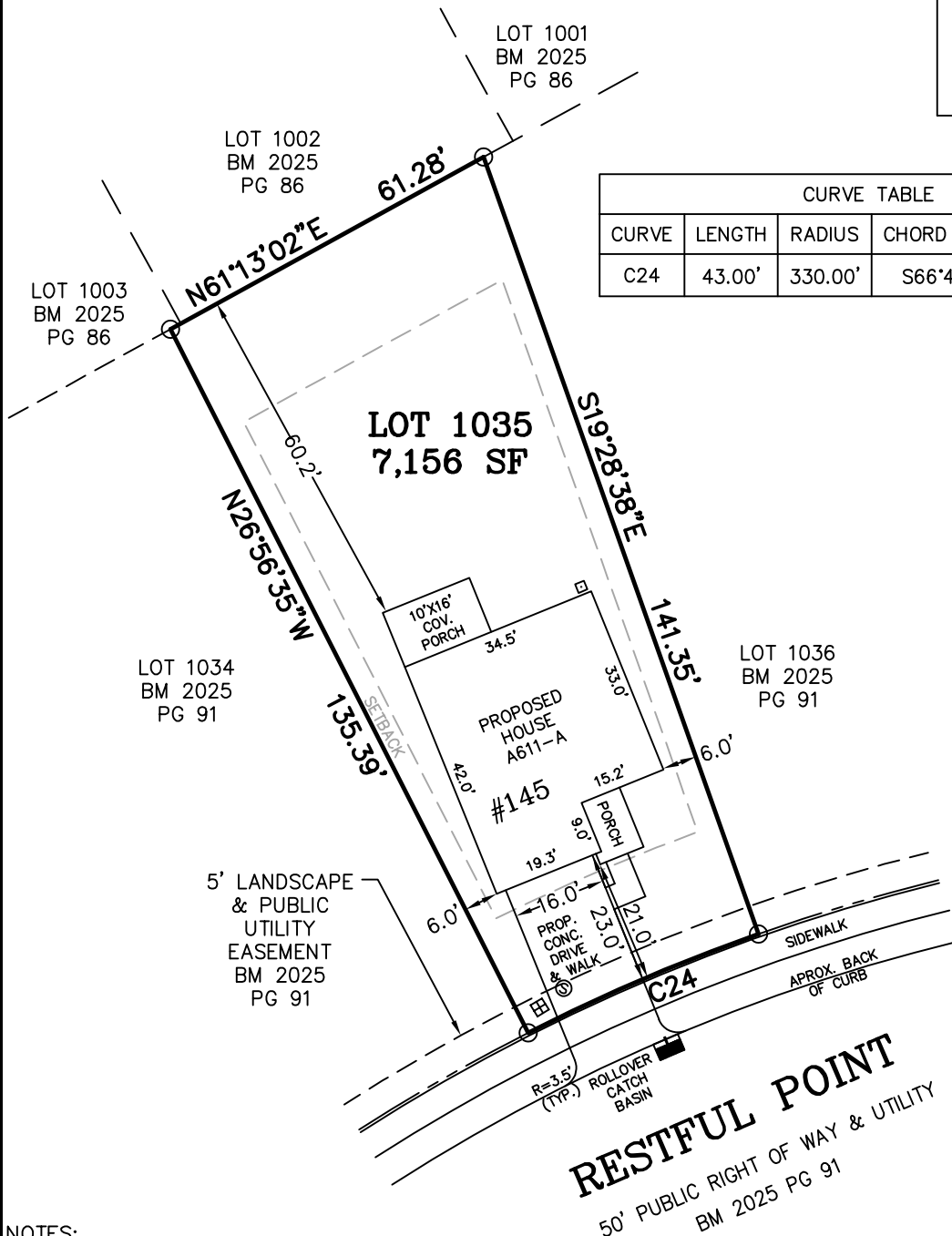


LEGEND

- MATHEMATICAL POINT
■ CONTROL CORNER
田 WATER METER
⑤ SEWER CLEAN OUT
⚡ FIRE HYDRANT

VICINITY MAP (NTS)

CURVE TABLE				
CURVE	LENGTH	RADIUS	CHORD BEARING	CHORD
C24	43.00'	330.00'	S66°47'23"W	42.97'



SEE NOTES

NOTES:

- REFERENCE HARNETT CO. BM 2025, PG 89-93 FOR BOUNDARY INFORMATION, NORTH INDEX & TIE LINES TO SUBDIVISION CONTROL CORNERS.
- ZONED: RA-30, RA-40, & CONSERVATION.
- SETBACKS, PER BM 2025 PG 89:
 - 43' LOT WIDTH:
 - FRONT YARD-20', SIDE YARD-4' & 4' OR 0' & 8',
 - REAR YARD-20', CORNER YARD-12'.
 - >43' LOT WIDTH:
 - FRONT YARD-20', SIDE YARD-5', REAR YARD-20',
 - CORNER YARD-12'.
- PROPERTY IS NOT LOCATED WITHIN A SPECIAL FLOOD HAZARD AREA AS SCALED FROM THE NFIP FIRM No. 3720065500L (EFFECTIVE DATE: JULY 19, 2022).

MAXIMUM BUILT-UPON AREA-2,300 SF

TOTAL ESTIMATED IMPERVIOUS—1,971 SF	
SITE	SQ. FT.
HOUSE	1,391
DRIVEWAY	372
LEAD WALK	39
COV. PORCH	160
A/C PAD	9

PERMIT PLAN LOT: 1035

SERENITY SUBDIVISION, PHASE 3B
 HECTOR'S CREEK TOWNSHIP, HARNETT COUNTY, NC

SURVEYED FOR
DAVID WEEKLEY HOMES
1901 N. HARRISON AVENUE, SUITE 200
CARY, NC 27513



MSS LAND CONSULTANTS, PC
 "Committed to Total Quality Service"
 Firm License: C-2070
 E S T. 1 9 9 8

6118 St. Giles St
(Suite E)
Raleigh, NC 27612

Phone (919) 510-4464
Fax (919) 510-9102
Email: hayesm@mssland.com

I HEREBY CERTIFY THAT THE BUILDING WILL LIE WHOLLY ON THE LOT. THIS PLAT IS OF AN EXISTING PARCEL OF LAND. THIS IS NOT A SURVEY AND NOT FOR RECORDATION PURPOSES.

PRELIMINARY PLAN

MATTHEW A. HAYES, PLS L-4516

DATE: 04/10/2025	SCALE: 1"=30'	DRAWN:CKC	CHECK:	FILE: DWH-22-02
------------------	---------------	-----------	--------	-----------------

REV: 04/28/2025 FLIPPED HOUSE