

5. THIS PARCEL IS NOT LOCATED WITHIN A FLOOD HAZARD ZONE AS INDICATED ON CID NO. 370328 PANEL 1508, SUFFIX J, HARNETT COUNTY WITH AN EFFECTIVE DATE OF 10/03/2006.

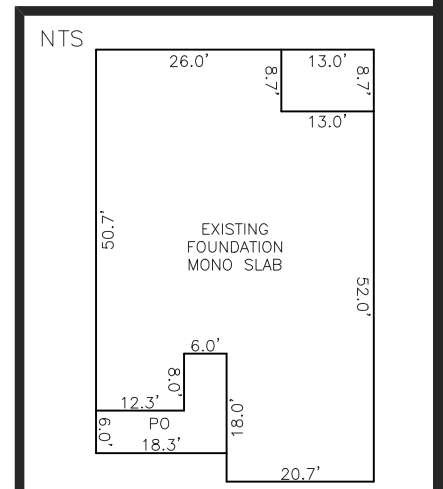
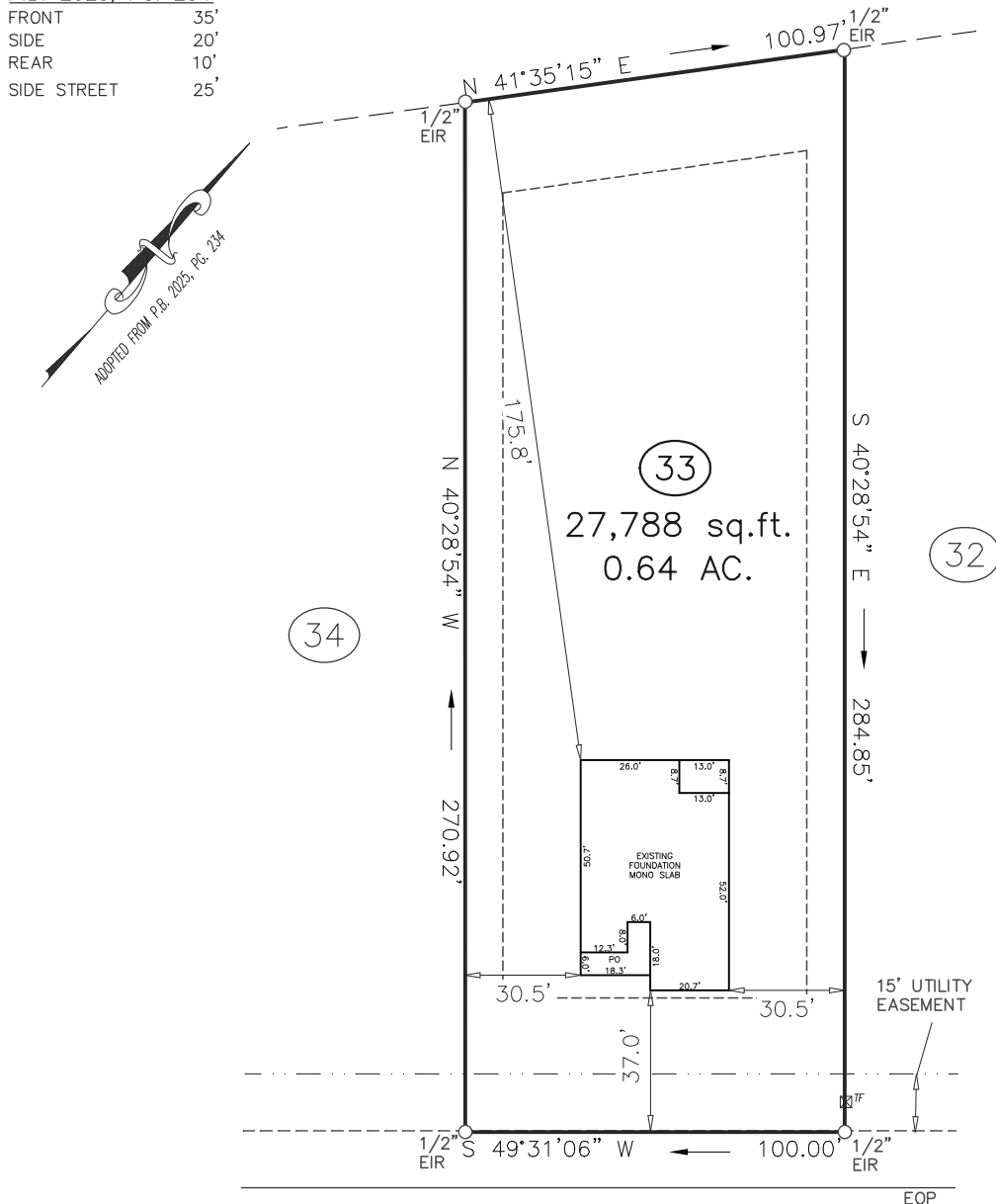
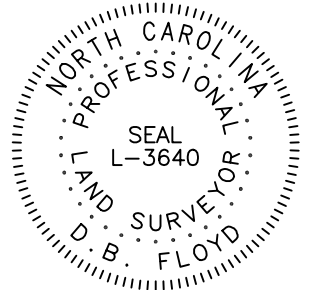
THIS MAP MAY NOT BE A CERTIFIED
SURVEY AND HAS NOT BEEN REVIEWED BY LOCAL
GOVERNMENT AGENCY FOR COMPLIANCE WITH ANY
APPLICABLE LAND DEVELOPMENT REGULATIONS
AND HAS NOT BEEN REVIEWED FOR COMPLIANCE
WITH RECORDING REQUIREMENTS FOR PLATS.

EIP - EXISTING IRON PIPE
EIB - EXISTING IRON BAR
EIPB - EXISTING IRON PIPE
EIBB - BURIED IRON BAR
CM - CONCRETE MONUMENT
NIP - NEW IRON PIPE SET
CATV - CABLE TV BOX
EB - ELECTRIC BOX
TEL - TELEPHONE PEDESTAL
PP - POWER POLE
OHL - OVERHEAD LINE
LP - LIGHT POLE
WM - WATER METER
WV - WATER VALVE
CO - SEWER CLEAN-OUT
SW - SIDEWALK
PO - PORCH
N/F - NOW OR FORMERLY
CVRD - COVERED
CB - CATCH BASIN
EOP - EDGE OF PAVEMENT
BOC - BACK OF CURB

HOUSE	2,293	SQ.FT.
DRIVE TO R/W	511	SQ.FT.
WALK	61	SQ.FT.
PATIO	64	SQ.FT.
TOTAL	2,929	SQ.FT.
MAX. ALLOWED	5,767	SQ.FT.

FRONT	35'
SIDE	20'
REAR	10'
SIDE STREET	25'

N/F
CHARLES G. WILLIAMS
DB 1010 PG 611
PC F, SLIDE 137-B



B O S T O N R I V E R D R I V E
50' PUBLIC & UTILITY ACCESS R/W

1 INCH = 50 FT.

BOSTON RIVER DRIVE
LOT 33 ILA'S WAY SUBDIVISION
AVERASBORO TWP., HARNETT CO., NC
P.B. 2025, PG. 234



ECLS
GLOBAL, INC.
U.S. VETERAN-OWNED
19 N MCKINLEY ST
COATS, NC 27521
8257ECLSGLOBALINC.COM
2329 (FAX) CO#C-4175