

UFP Mid Atlantic LLC, 5631 S. NC 62, Burlington, NC, Joy Perry Run: 8.81 S Sep 13 2024 Print: 8.810 S Sep 13 2024 MiTek Industries, Inc. Mon Nov 18 08:16:52 Page: 1  
ID:a?g6?71yTv6SHVH?OIZqv2z8ggv-NWgcm4a2u4ZbFLsVD0Bk4sTCIwVAFMFwC9\_AabyI0ew

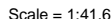


Plate Offsets (X, Y):	[11:0-2-0,Edge], [14:0-1-8,Edge]
-----------------------	----------------------------------

<b>LUMBER</b>		<b>BRACING</b>	
TOP CHORD	2x4 SP No.1(flat)	TOP CHORD	Structural wood sheathing directly applied, except end verticals. Rigid ceiling directly applied or 10-0-0 oc bracing.
BOT CHORD	2x4 SP SS(flat)	BOT CHORD	
WEBS	2x4 SP No.3(flat)		
OTHERS	2x4 SP No.3(flat)		
<b>REACTIONS</b>	(lb/size)	11=913/0-3-8, (min. 0-1-8), 18=913/0-3-8, (min. 0-1-8)	
<b>FORCES</b>	(lb) - Max. Comp./Max. Ten. - All forces 250 (lb) or less except when shown.		
TOP CHORD	2-3=-2597/0, 3-4=-3455/0, 4-5=-3455/0, 5-6=-3525/0, 6-7=-3525/0, 7-8=-3525/0, 8-9=-1896/0		
BOT CHORD	17-18=0/1991, 16-17=0/3172, 15-16=0/3655, 14-15=0/3525, 13-14=0/2649, 12-13=0/2649, 11-12=0/1141		
WEBS	7-14=-343/0, 2-18=-2135/0, 2-17=0/789, 3-17=-748/0, 3-16=0/368, 5-16=-320/0, 5-15=-419/309, 9-11=-1429/0, 9-12=0/983, 8-12=-980/0, 8-14=0/1121		

- NOTES**
- 1) Unbalanced floor live loads have been considered for this design.
  - 2) All plates are MT20 plates unless otherwise indicated.
  - 3) This truss is designed in accordance with the 2015 International Residential Code sections R502.11.1 and R802.10.2 and referenced standard ANS/TPI 1.
  - 4) Recommend 2x6 strongbacks, on edge, spaced at 10-00-00 oc and fastened to each truss with 3-10d (0.131" X 3") nails. Strongbacks to be attached to walls at their outer ends or restrained by other means.



This design is based upon parameters shown, and is for an individual building component to be installed and loaded vertically. Applicability of design parameters and proper incorporation of component is responsibility of the Building Designer. Building Designer shall verify all design information on this sheet for conformance with conditions and requirements of the specific building and governing codes and ordinances. Building Designer accepts responsibility for the correctness or accuracy of the design information as it may relate to a specific building. Certification is valid only when truss is fabricated by a UFPI plant. Bracing shown is for lateral support of truss members only and does not replace erection and permanent bracing. Refer to Building Component Safety Information (BCSI) for general guidance regarding storage, erection and bracing available from SBGA and Truss Plate Institute.



Job	Truss	Truss Type	Qty	Ply	MUNGO HOMES - TELFAIR 2ND FLR
72435959	F201	Truss	1	1	Job Reference (optional)

UFP Mid Atlantic LLC, 5631 S. NC 62, Burlington, NC, Joy Perry

Run: 8.81 S Sep 13 2024 Print: 8.810 S Sep 13 2024 MiTek Industries, Inc. Mon Nov 18 08:16:53

Page: 1

ID:a?q6?71yTv6SHVH?OIzQv2z8gqv-JuoMBmcJQhpJUf0tKREC9HYcWkDvjGIDfTTGeTyI0eu

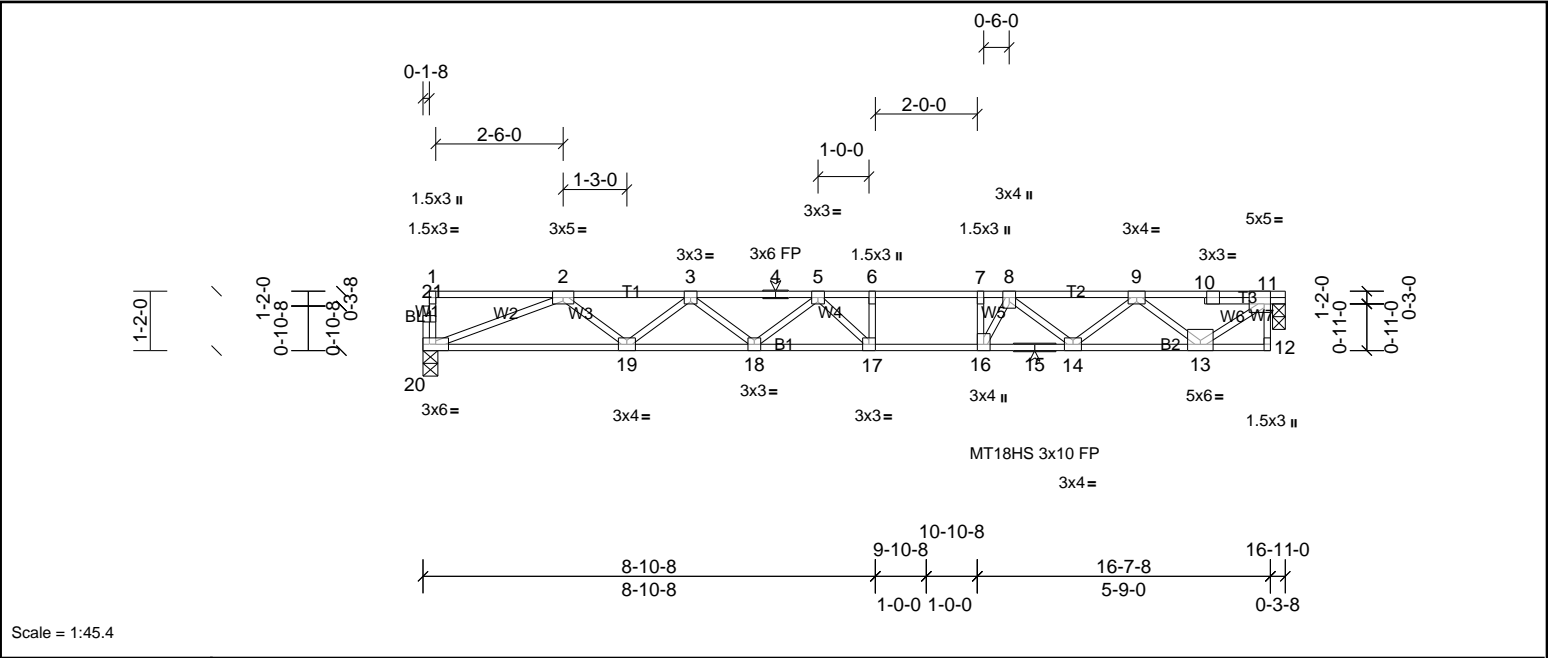


Plate Offsets (X, Y):		[11:0-1-8,Edge]										
<b>Loading</b>	(psf)	<b>Spacing</b>	2-0-0	<b>CSI</b>		<b>DEFL</b>	in	(loc)	I/defl	L/d	<b>PLATES</b>	<b>GRIP</b>
TCLL	40.0	Plate Grip DOL	1.00	TC	0.65	Vert(LL)	-0.26	17-18	>754	480	MT18HS	244/190
TCDL	10.0	Lumber DOL	1.00	BC	0.63	Vert(CT)	-0.36	17-18	>546	360	MT20	244/190
BCLL	0.0	Rep Stress Incr	YES	WB	0.61	Horz(CT)	0.02	11	n/a	n/a		
BCDL	5.0	Code	IRC2015/TPI2014	Matrix-SH							Weight: 84 lb	FT = 20%F, 12%E

LUMBER			BRACING		
TOP CHORD	2x4 SP SS(flat)		TOP CHORD	Structural wood sheathing directly applied or 6-0-0 oc purlins, except end verticals.	
BOT CHORD	2x4 SP SS(flat)		BOT CHORD	Rigid ceiling directly applied or 10-0-0 oc bracing.	
WEBS	2x4 SP No.3(flat)				
OTHERS	2x4 SP No.3(flat)				

REACTIONS	(lb/size)	11=904/0-3-0, (min. 0-1-8), 20=898/0-3-8, (min. 0-1-8)
FORCES	(lb) - Max. Comp./Max. Ten. - All forces 250 (lb) or less except when shown.	
TOP CHORD		2-3=-2542/0, 3-4=-3362/0, 4-5=-3362/0, 5-6=-3404/0, 6-7=-3404/0, 7-8=-3404/0, 8-9=-2483/0, 9-10=-1031/0, 10-11=-1036/0
BOT CHORD		19-20=0/1953, 18-19=0/3098, 17-18=0/3550, 16-17=0/3404, 15-16=0/3096, 14-15=0/3096, 13-14=0/1913
WEBS		2-20=-2095/0, 2-19=0/767, 3-19=-723/0, 3-18=0/344, 5-18=-295/0, 5-17=-410/271, 11-13=0/1287, 9-13=-1147/0, 9-14=0/742, 8-14=-798/0, 7-16=-622/0, 8-16=0/914

- NOTES**
- 1) Unbalanced floor live loads have been considered for this design.
  - 2) All plates are MT20 plates unless otherwise indicated.
  - 3) This truss is designed in accordance with the 2015 International Residential Code sections R502.11.1 and R802.10.2 and referenced standard ANSI/TPI 1.
  - 4) Recommend 2x6 strongbacks, on edge, spaced at 10-00-00 oc and fastened to each truss with 3-10d (0.131" X 3") nails. Strongbacks to be attached to walls at their outer ends or restrained by other means.
  - 5) Gap between inside of top chord bearing and first diagonal or vertical web shall not exceed 0.500in.
  - 6) CAUTION, Do not erect truss backwards.



Job	Truss	Truss Type	Qty	Ply	MUNGO HOMES - TELFAIR 2ND FLR
72435959	F202	Truss	3	1	Job Reference (optional)

UFP Mid Atlantic LLC, 5631 S. NC 62, Burlington, NC, Joy Perry

Run: 8.81 S Sep 13 2024 Print: 8.810 S Sep 13 2024 MiTek Industries, Inc. Mon Nov 18 08:16:54

Page: 1

ID:a?q6?71yTv6SHVH?OIzqv2z8gqv-n5MIP6cxB?yA6pb3u8IRiU5jY8TJSkmNu7DqAwyl0et

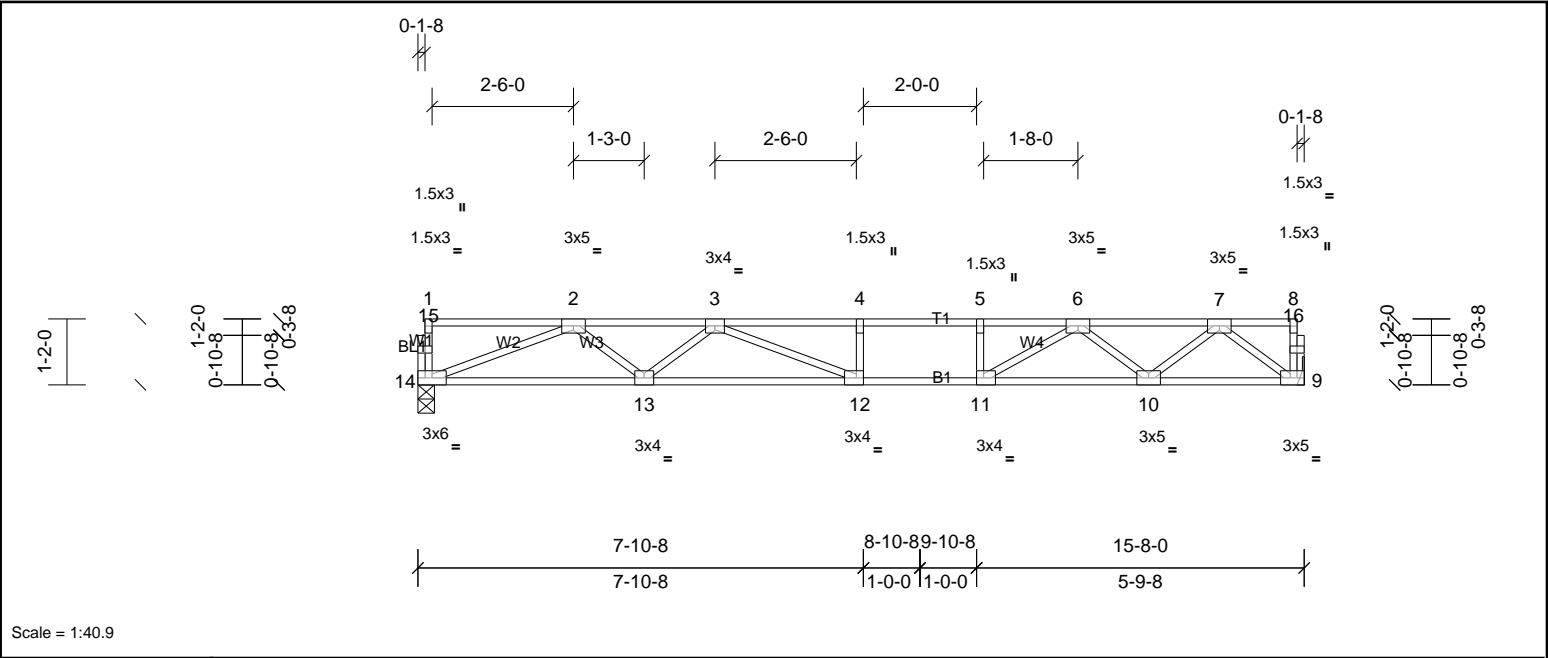


Plate Offsets (X, Y): [9:0-2-0,Edge], [11:0-1-8,Edge], [12:0-1-8,Edge]									
<b>Loading</b>	(psf)	<b>Spacing</b>	2-0-0	<b>CSI</b>		<b>DEFL</b>	in	(loc)	<b>PLATES</b>
TCLL	40.0	Plate Grip DOL	1.00	TC	0.96	Vert(LL)	-0.31	12-13	MT20
TCDL	10.0	Lumber DOL	1.00	BC	0.93	Vert(CT)	-0.42	12-13	GRIP
BCLL	0.0	Rep Stress Incr	YES	WB	0.53	Horz(CT)	0.05	9	244/190
BCDL	5.0	Code	IRC2015/TPI2014	Matrix-SH					Weight: 76 lb
									FT = 20%F, 12%E

<b>LUMBER</b>		<b>BRACING</b>	
TOP CHORD	2x4 SP No.2(flat)	TOP CHORD	Structural wood sheathing directly applied or 2-2-0 oc purlins, except end verticals.
BOT CHORD	2x4 SP No.1(flat)	BOT CHORD	Rigid ceiling directly applied or 2-2-0 oc bracing.
WEBS	2x4 SP No.3(flat)		
OTHERS	2x4 SP No.3(flat)		

<b>REACTIONS</b>	(lb/size)	9=842/ Mechanical, (min. 0-1-8), 14=842/0-3-8, (min. 0-1-8)
<b>FORCES</b>	(lb) - Max. Comp./Max. Ten. - All forces 250 (lb) or less except when shown.	
TOP CHORD	2-3=-2364/0, 3-4=-3053/0, 4-5=-3053/0, 5-6=-3053/0, 6-7=-1717/0	
BOT CHORD	13-14=0/1823, 12-13=0/2826, 11-12=0/3053, 10-11=0/2388, 9-10=0/1048	
WEBS	5-11=-322/0, 2-14=-1954/0, 2-13=0/704, 3-13=-602/0, 3-12=-60/583, 7-9=-1313/0, 7-10=0/870, 6-10=-874/0, 6-11=0/943	

- NOTES**
- Unbalanced floor live loads have been considered for this design.
  - This truss is designed in accordance with the 2015 International Residential Code sections R502.11.1 and R802.10.2 and referenced standard ANSI/TPI 1.
  - Recommend 2x6 strongbacks, on edge, spaced at 10-00-00 oc and fastened to each truss with 3-10d (0.131" X 3") nails. Strongbacks to be attached to walls at their outer ends or restrained by other means.



Job	Truss	Truss Type	Qty	Ply	MUNGO HOMES - TELFAIR 2ND FLR
72435959	F203	Truss	9	1	Job Reference (optional)

UFP Mid Atlantic LLC, 5631 S. NC 62, Burlington, NC, Joy Perry

Run: 8.81 S Sep 13 2024 Print: 8.810 S Sep 13 2024 MiTek Industries, Inc. Mon Nov 18 08:16:54

Page: 1

ID:gybFDKc1Jhmb30WAXcCoLz1jXX-n5MIP6cxB7yA6pb3u8IRIU5lz8VQSf5Nu7DqAwyl0et

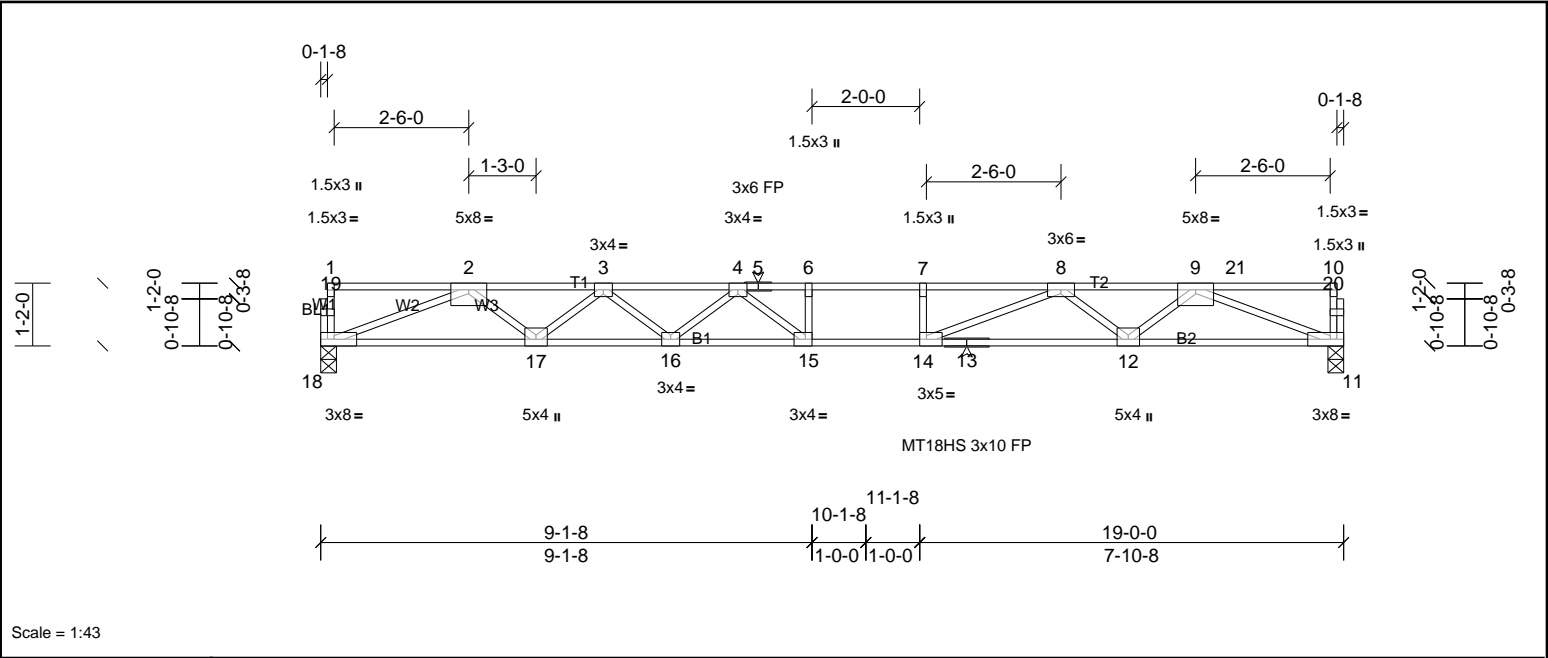


Plate Offsets (X, Y): [14:0-1-8,Edge], [15:0-1-8,Edge]

Loading	(psf)	Spacing	2-0-0	CSI	DEFL	in	(loc)	I/defl	L/d	PLATES	GRIP
TCLL	40.0	Plate Grip DOL	1.00	TC	0.80	Vert(LL)	-0.36	15-16	>617	480	MT18HS 244/190
TCDL	10.0	Lumber DOL	1.00	BC	0.80	Vert(CT)	-0.57	15	>398	360	MT20 244/190
BCLL	0.0	Rep Stress Incr	NO	WB	0.83	Horz(CT)	0.09	11	n/a	n/a	
BCDL	5.0	Code	IRC2015/TPI2014	Matrix-SH							Weight: 92 lb FT = 20%F, 12%E

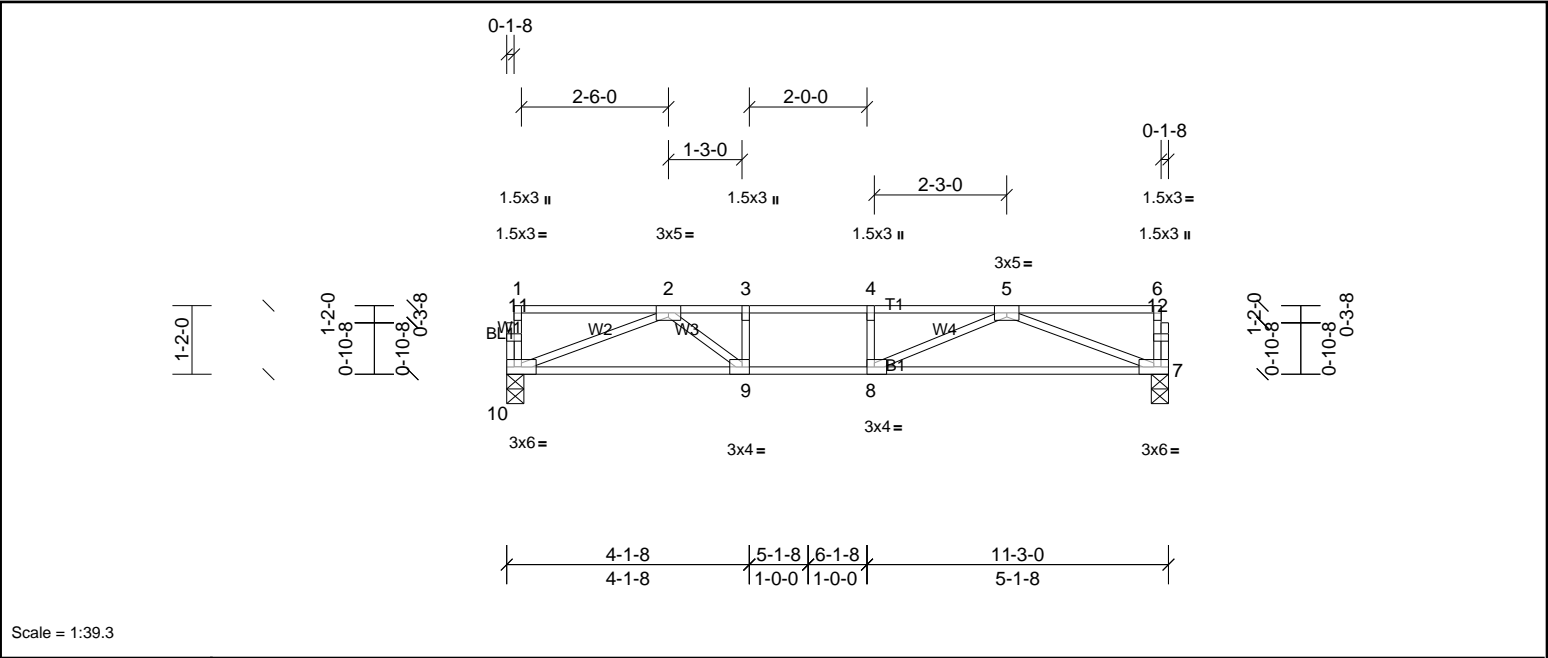
LUMBER		BRACING	
TOP CHORD	2x4 SP SS(flat)	TOP CHORD	Structural wood sheathing directly applied or 5-6-11 oc purlins, except end verticals.
BOT CHORD	2x4 SP SS(flat)	BOT CHORD	Rigid ceiling directly applied or 10-0-0 oc bracing.
WEBS	2x4 SP No.3(flat)		
OTHERS	2x4 SP No.3(flat)		

REACTIONS	(lb/size)	11=1320/0-3-8, (min. 0-1-8), 18=1127/0-3-8, (min. 0-1-8)
FORCES	(lb) - Max. Comp./Max. Ten. - All forces 250 (lb) or less except when shown.	
TOP CHORD	2-3=-3394/0, 3-4=-4744/0, 4-5=-5465/0, 5-6=-5465/0, 6-7=-5465/0, 7-8=-5465/0, 8-9=-3718/0	
BOT CHORD	17-18=0/2528, 16-17=0/4220, 15-16=0/5234, 14-15=0/5465, 13-14=0/4544, 12-13=0/4544, 11-12=0/2845	
WEBS	6-15=-350/0, 7-14=-346/0, 2-18=-2713/0, 2-17=0/1128, 3-17=-1075/0, 3-16=0/683, 4-16=-638/0, 4-15=-89/757, 8-14=0/1227, 8-12=-1075/0, 9-12=0/1137, 9-11=-3049/0	

- NOTES**
- Unbalanced floor live loads have been considered for this design.
  - All plates are MT20 plates unless otherwise indicated.
  - This truss is designed in accordance with the 2015 International Residential Code sections R502.11.1 and R802.10.2 and referenced standard ANSI/TPI 1.
  - Load case(s) 1 has/have been modified. Building designer must review loads to verify that they are correct for the intended use of this truss.
  - Recommend 2x6 strongbacks, on edge, spaced at 10-00-00 oc and fastened to each truss with 3-10d (0.131" X 3") nails. Strongbacks to be attached to walls at their outer ends or restrained by other means.
- LOAD CASE(S)** Standard
- Dead + Floor Live (balanced): Lumber Increase=1.00, Plate Increase=1.00  
Uniform Loads (lb/ft)  
Vert: 11-18=-10, 1-4=-100, 4-21=-130, 10-21=-166



Job	Truss	Truss Type	Qty	Ply	MUNGO HOMES - TELFAIR 2ND FLR
72435959	F204	Truss	2	1	Job Reference (optional)



Scale = 1:39.3

Plate Offsets (X, Y): [8:0-1-8,Edge], [9:0-1-8,Edge]

Loading	(psf)	Spacing	2-0-0	CSI		DEFL	in	(loc)	l/defl	L/d	PLATES	GRIP
TCLL	40.0	Plate Grip DOL	1.00	TC	0.86	Vert(LL)	-0.15	7-8	>859	480	MT20	244/190
TCDL	30.0	Lumber DOL	1.00	BC	0.86	Vert(CT)	-0.29	7-8	>454	360		
BCLL	0.0	Rep Stress Incr	YES	WB	0.48	Horz(CT)	0.03	7	n/a	n/a		
BCDL	5.0	Code	IRC2015/TPI2014	Matrix-SH							Weight: 55 lb	FT = 20%F, 12%E

LUMBER		BRACING	
TOP CHORD	2x4 SP No.2(flat)	TOP CHORD	Structural wood sheathing directly applied or 5-6-0 oc purlins, except end verticals.
BOT CHORD	2x4 SP No.2(flat)	BOT CHORD	Rigid ceiling directly applied or 10-0-0 oc bracing.
WEBS	2x4 SP No.3(flat)		
OTHERS	2x4 SP No.3(flat)		

REACTIONS	(lb/size)	7=816/0-3-8, (min. 0-1-8), 10=816/0-3-8, (min. 0-1-8)
FORCES	(lb) - Max. Comp./Max. Ten. - All forces 250 (lb) or less except when shown.	
TOP CHORD	2-3=-2128/0, 3-4=-2128/0, 4-5=-2128/0	
BOT CHORD	9-10=0/1647, 8-9=0/2128, 7-8=0/1639	
WEBS	3-9=-377/0, 2-10=-1762/0, 2-9=0/751, 5-7=-1754/0, 5-8=0/668	

- NOTES**
- Unbalanced floor live loads have been considered for this design.
  - This truss is designed in accordance with the 2015 International Residential Code sections R502.11.1 and R802.10.2 and referenced standard ANSI/TPI 1.
  - Recommend 2x6 strongbacks, on edge, spaced at 10-00-00 oc and fastened to each truss with 3-10d (0.131" X 3") nails. Strongbacks to be attached to walls at their outer ends or restrained by other means.



Job	Truss	Truss Type	Qty	Ply	MUNGO HOMES - TELFAIR 2ND FLR
72435959	F205	Truss	3	1	Job Reference (optional)

UFP Mid Atlantic LLC, 5631 S. NC 62, Burlington, NC, Joy Perry

Run: 8.81 S Sep 13 2024 Print: 8.810 S Sep 13 2024 MiTek Industries, Inc. Mon Nov 18 08:16:54

Page: 1

ID:a?q6?71yTv6SHVH?OIzqv2z8qqv-n5MIP6cxB?yA6pb3u8IRiU5nN8YgSnyNu7DqAwyl0et

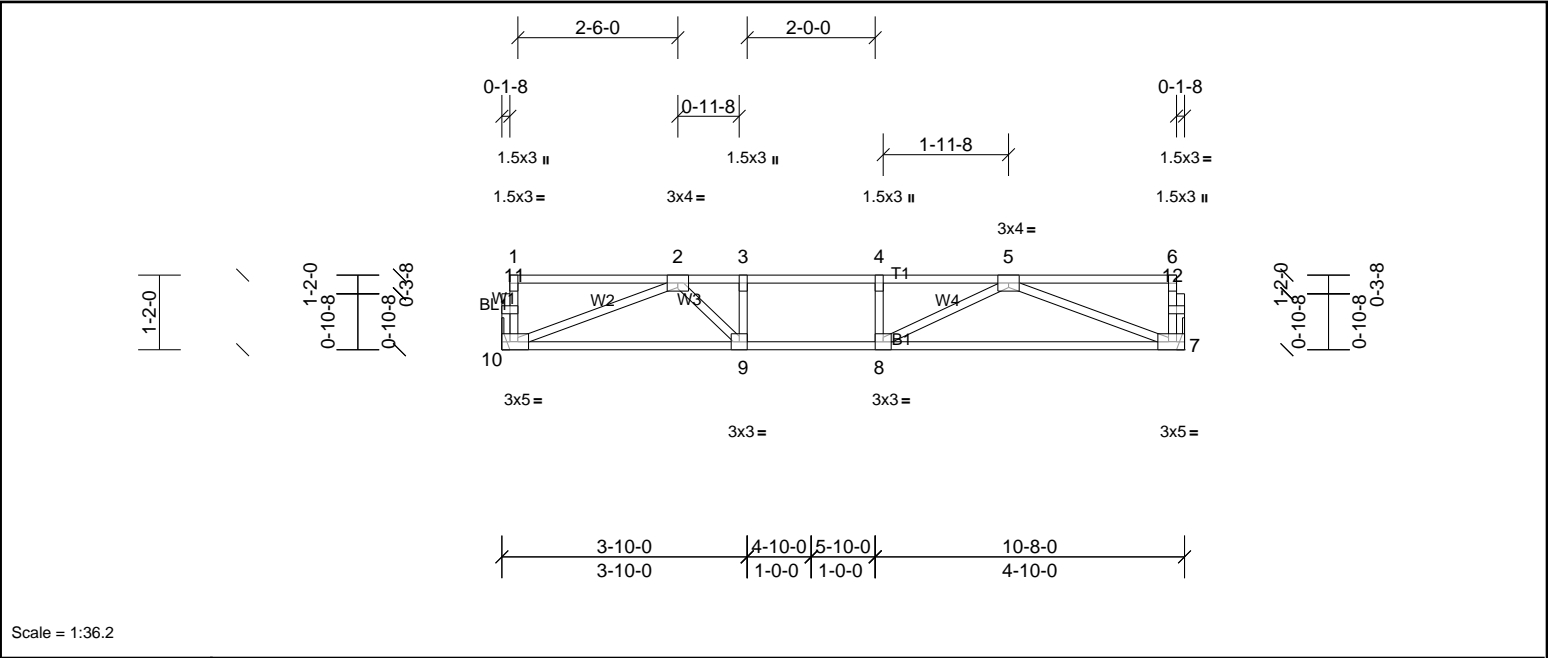


Plate Offsets (X, Y): [7:0-2-0,Edge], [10:0-2-0,Edge]												
<b>Loading</b>	(psf)	<b>Spacing</b>	2-0-0	<b>CSI</b>		<b>DEFL</b>	in	(loc)	I/defl	L/d	<b>PLATES</b>	<b>GRIP</b>
TCLL	40.0	Plate Grip DOL	1.00	TC	0.65	Vert(LL)	-0.12	7-8	>999	480	MT20	244/190
TCDL	10.0	Lumber DOL	1.00	BC	0.59	Vert(CT)	-0.19	7-8	>647	360		
BCLL	0.0	Rep Stress Incr	YES	WB	0.33	Horz(CT)	0.02	7	n/a	n/a		
BCDL	5.0	Code	IRC2015/TPI2014	Matrix-SH							Weight: 52 lb	FT = 20%F, 12%E

**LUMBER**  
TOP CHORD 2x4 SP No.2(flat)  
BOT CHORD 2x4 SP No.2(flat)  
WEBS 2x4 SP No.3(flat)  
OTHERS 2x4 SP No.3(flat)

**BRACING**  
TOP CHORD Structural wood sheathing directly applied or 6-0-0 oc purlins, except end verticals.  
BOT CHORD Rigid ceiling directly applied or 10-0-0 oc bracing.

**REACTIONS** (lb/size) 7=567/ Mechanical, (min. 0-1-8), 10=567/ Mechanical, (min. 0-1-8)

**FORCES** (lb) - Max. Comp./Max. Ten. - All forces 250 (lb) or less except when shown.  
TOP CHORD 2-3=-1396/0, 3-4=-1396/0, 4-5=-1396/0  
BOT CHORD 9-10=0/1129, 8-9=0/1396, 7-8=0/1112  
WEBS 3-9=-308/0, 2-10=-1207/0, 2-9=0/534, 5-7=-1190/0, 5-8=0/458

**NOTES**  
1) Unbalanced floor live loads have been considered for this design.  
2) This truss is designed in accordance with the 2015 International Residential Code sections R502.11.1 and R802.10.2 and referenced standard ANSI/TPI 1.  
3) Recommend 2x6 strongbacks, on edge, spaced at 10-00-00 oc and fastened to each truss with 3-10d (0.131" X 3") nails. Strongbacks to be attached to walls at their outer ends or restrained by other means.





Job	Truss	Truss Type	Qty	Ply	MUNGO HOMES - TELFAIR 2ND FLR
72435959	F206	Truss	1	1	Job Reference (optional)

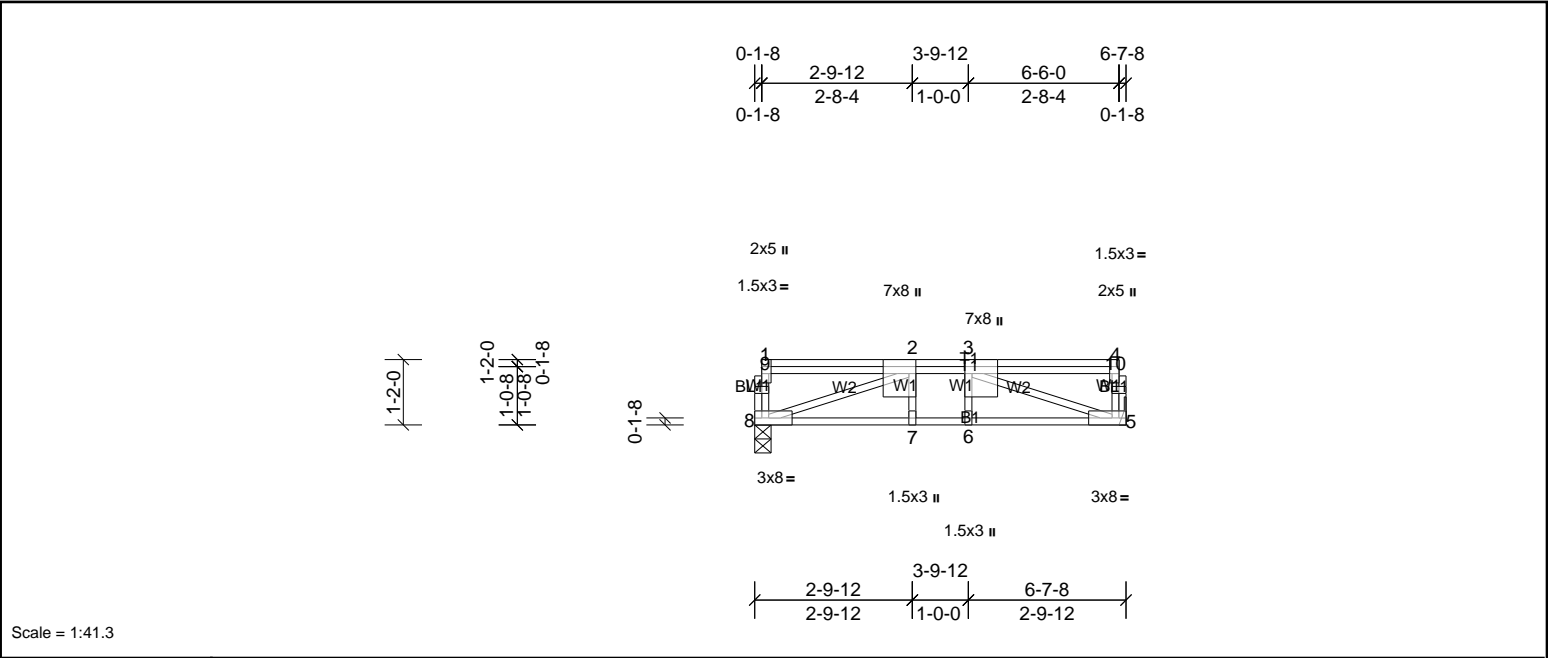


Plate Offsets (X, Y): [2:0-3-0,Edge], [3:0-3-0,Edge], [4:0-3-0,Edge]

Loading	(psf)	Spacing	2-0-0	CSI		DEFL	in	(loc)	I/defl	L/d	PLATES	GRIP
TCLL	40.0	Plate Grip DOL	1.00	TC	0.67	Vert(LL)	-0.09	5-6	>865	480	MT20	244/190
TCDL	10.0	Lumber DOL	1.00	BC	0.85	Vert(CT)	-0.12	5-6	>623	360		
BCLL	0.0	Rep Stress Incr	YES	WB	0.77	Horz(CT)	0.02	5	n/a	n/a		
BCDL	5.0	Code	IRC2015/TPI2014	Matrix-SH							Weight: 44 lb	FT = 20%F, 12%E

LUMBER		BRACING	
TOP CHORD	2x4 SP No.2(flat)	TOP CHORD	Structural wood sheathing directly applied or 6-0-0 oc purlins, except end verticals.
BOT CHORD	2x4 SP No.1(flat)	BOT CHORD	Rigid ceiling directly applied or 10-0-0 oc bracing.
WEBS	2x4 SP No.3(flat)		
OTHERS	2x4 SP No.3(flat)		

REACTIONS	(lb/size)	5=1247/ Mechanical, (min. 0-1-8), 8=1002/0-3-8, (min. 0-1-8)
FORCES	(lb) - Max. Comp./Max. Ten. - All forces 250 (lb) or less except when shown.	
TOP CHORD	5-10=-254/0, 4-10=-253/0, 2-3=-2660/0	
BOT CHORD	7-8=0/2660, 6-7=0/2660, 5-6=0/2660	
WEBS	2-8=-2829/0, 3-5=-2815/0	

- NOTES**
- Unbalanced floor live loads have been considered for this design.
  - This truss is designed in accordance with the 2015 International Residential Code sections R502.11.1 and R802.10.2 and referenced standard ANSI/TPI 1.
  - Recommend 2x6 strongbacks, on edge, spaced at 10-00-00 oc and fastened to each truss with 3-10d (0.131" X 3") nails. Strongbacks to be attached to walls at their outer ends or restrained by other means.

LOAD CASE(S)	Standard
1) Dead + Floor Live (balanced): Lumber Increase=1.00, Plate Increase=1.00	
Uniform Loads (lb/ft)	
Vert: 5-8=-10, 1-4=-100	
Concentrated Loads (lb)	
Vert: 3=-1560	



Job	Truss	Truss Type	Qty	Ply	MUNGO HOMES - TELFAIR 2ND FLR
72435959	F207	Truss	2	1	Job Reference (optional)

UFP Mid Atlantic LLC, 5631 S. NC 62, Burlington, NC, Joy Perry

Run: 8.81 S Sep 13 2024 S Sep 13 2024 MiTek Industries, Inc. Mon Nov 18 08:16:55

Page: 1

ID:a?q6?71yTv6SHVH?OIzQv2z8gqv-GHW7cSdZyl41kz9GSsGgEidxKYtgB9KW7nyNjMyl0es

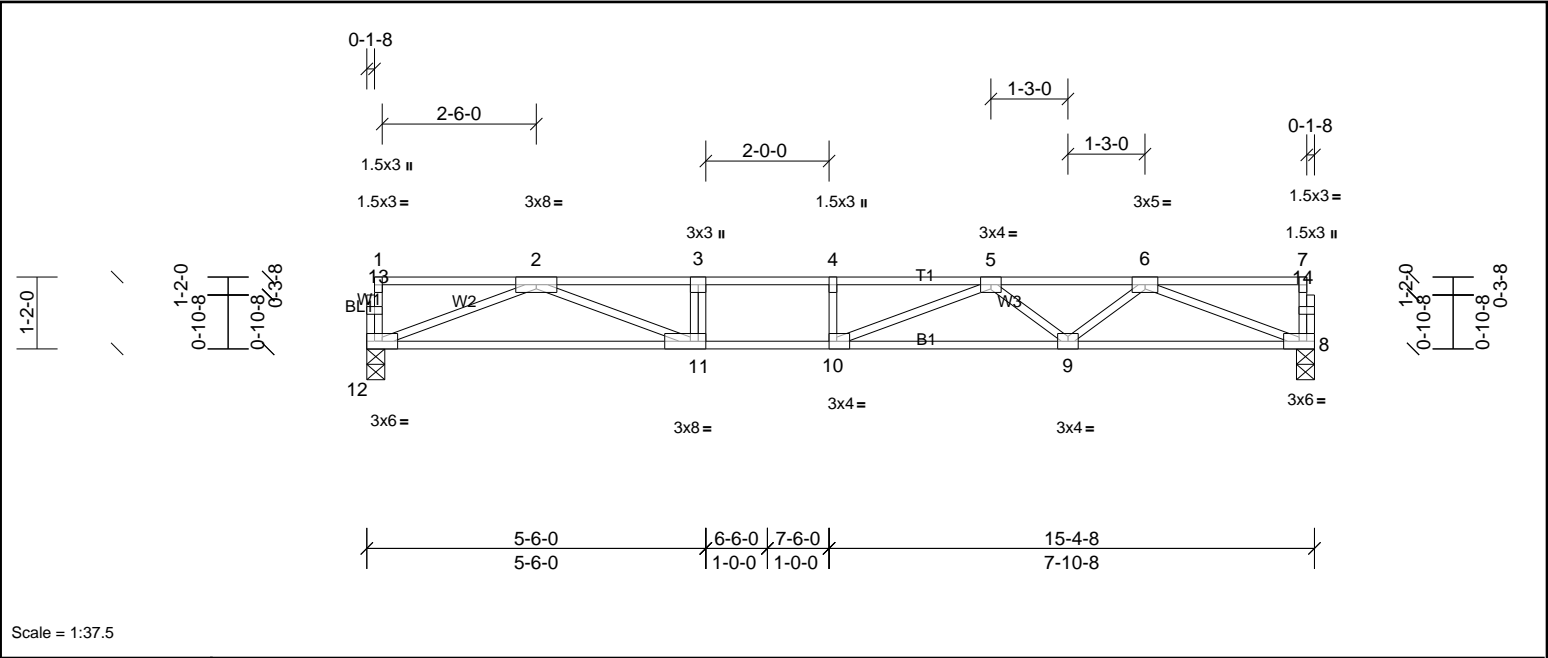


Plate Offsets (X, Y): [10:0-1-8,Edge], [11:0-3-0,Edge]												
<b>Loading</b>	(psf)	<b>Spacing</b>	1-7-3	<b>CSI</b>		<b>DEFL</b>	in	(loc)	I/defl	L/d	<b>PLATES</b>	<b>GRIP</b>
TCLL	40.0	Plate Grip DOL	1.00	TC	0.76	Vert(LL)	-0.26	9-10	>694	480	MT20	244/190
TCDL	30.0	Lumber DOL	1.00	BC	0.67	Vert(CT)	-0.45	9-10	>402	360		
BCLL	0.0	Rep Stress Incr	YES	WB	0.64	Horz(CT)	0.05	8	n/a	n/a		
BCDL	5.0	Code	IRC2015/TPI2014	Matrix-SH							Weight: 75 lb	FT = 20%F, 12%E

**LUMBER**  
TOP CHORD 2x4 SP No.1(flat)  
BOT CHORD 2x4 SP SS(flat)  
WEBS 2x4 SP No.3(flat)  
OTHERS 2x4 SP No.3(flat)

**BRACING**  
TOP CHORD Structural wood sheathing directly applied or 5-6-0 oc purlins, except end verticals.  
BOT CHORD Rigid ceiling directly applied or 10-0-0 oc bracing.

**REACTIONS** (lb/size) 8=900/0-3-8, (min. 0-1-8), 12=900/0-3-8, (min. 0-1-8)

**FORCES** (lb) - Max. Comp./Max. Ten. - All forces 250 (lb) or less except when shown.  
TOP CHORD 2-3=-3169/0, 3-4=-3169/0, 4-5=-3169/0, 5-6=-2511/0  
BOT CHORD 11-12=0/1944, 10-11=0/3169, 9-10=0/3000, 8-9=0/1947  
WEBS 3-11=-378/0, 2-12=-2084/0, 2-11=0/1350, 6-8=-2087/0, 6-9=0/735, 5-9=-636/0, 5-10=-51/486

**NOTES**  
1) Unbalanced floor live loads have been considered for this design.  
2) This truss is designed in accordance with the 2015 International Residential Code sections R502.11.1 and R802.10.2 and referenced standard ANSI/TPI 1.  
3) Recommend 2x6 strongbacks, on edge, spaced at 10-00-00 oc and fastened to each truss with 3-10d (0.131" X 3") nails. Strongbacks to be attached to walls at their outer ends or restrained by other means.





Job 72435959	Truss F208	Truss Type Truss	Qty 6	Ply 1	MUNGO HOMES - TELFAIR 2ND FLR Job Reference (optional)
-----------------	---------------	---------------------	----------	----------	---

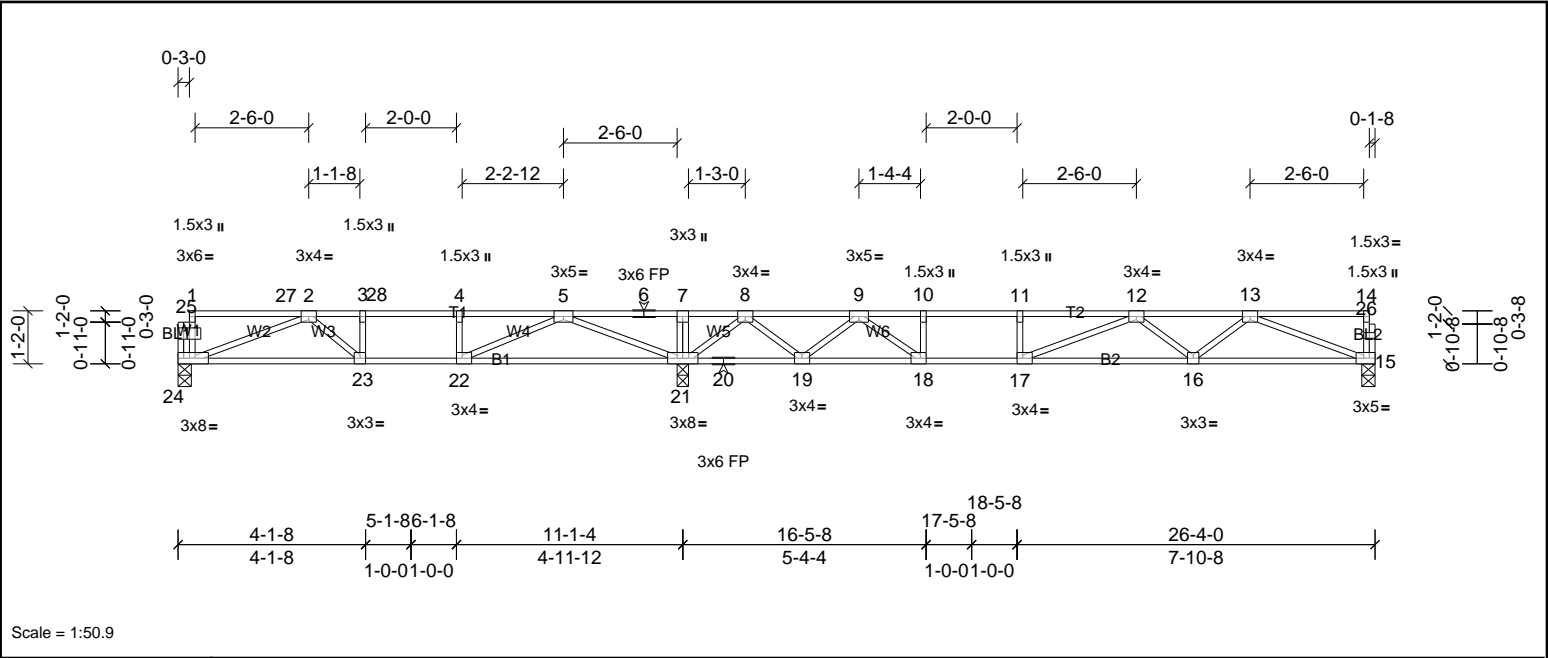


Plate Offsets (X, Y): [15:0-2-0,Edge], [17:0-1-8,Edge], [18:0-1-8,Edge], [22:0-1-8,Edge], [24:0-3-8,Edge]

Loading	(psf)	Spacing	1-7-3	CSI		DEFL	in	(loc)	L/defl	L/d	PLATES	GRIP
TCLL	40.0	Plate Grip DOL	1.00	TC	0.91	Vert(LL)	-0.24	16-17	>768	480	MT20	244/190
TCDL	10.0	Lumber DOL	1.00	BC	0.86	Vert(CT)	-0.33	16-17	>555	360		
BCLL	0.0	Rep Stress Incr	NO	WB	0.45	Horz(CT)	0.04	15	n/a	n/a		
BCDL	5.0	Code	IRC2015/TPI2014	Matrix-SH								
											Weight: 128 lb	FT = 20%F, 12%E

LUMBER	BRACING
TOP CHORD 2x4 SP No.1(flat)	TOP CHORD Structural wood sheathing directly applied or 6-0-0 oc purlins, except end verticals.
BOT CHORD 2x4 SP No.1(flat)	BOT CHORD Rigid ceiling directly applied or 10-0-0 oc bracing, Except:
WEBS 2x4 SP No.3(flat)	6-0-0 oc bracing: 19-21,18-19.
OTHERS 2x4 SP No.3(flat)	

REACTIONS	(lb/size)	15=585/0-3-8, (min. 0-1-8), 21=1517/0-3-0, (min. 0-1-8), 24=575/0-3-8, (min. 0-1-8)
Max Grav		15=608 (LC 14), 21=1517 (LC 1), 24=612 (LC 8)

FORCES	(lb) - Max. Comp./Max. Ten. - All forces 250 (lb) or less except when shown.
TOP CHORD	2-3=-1431/0, 3-28=-1431/0, 4-28=-1431/0, 4-5=-1431/0, 5-6=0/1095, 6-7=0/1095, 7-8=0/1087, 8-9=-708/218, 9-10=-1903/0, 10-11=-1903/0, 11-12=-1903/0, 12-13=-1657/0
BOT CHORD	23-24=0/1241, 22-23=0/1431, 21-22=0/781, 20-21=-418/140, 19-20=-418/140, 18-19=-10/1309, 17-18=0/1903, 16-17=0/1945, 15-16=0/1295
WEBS	4-22=-306/0, 10-18=-352/0, 2-24=-1315/0, 2-23=0/253, 5-21=-1635/0, 5-22=0/853, 8-21=-1081/0, 8-19=0/772, 9-19=-837/0, 9-18=0/878, 13-15=-1387/0, 13-16=0/471, 12-16=-376/0, 12-17=-270/142

- NOTES**
- Unbalanced floor live loads have been considered for this design.
  - All plates are 3x4 MT20 unless otherwise indicated.
  - This truss is designed in accordance with the 2015 International Residential Code sections R502.11.1 and R802.10.2 and referenced standard ANSI/TPI 1.
  - Load case(s) 1 has/have been modified. Building designer must review loads to verify that they are correct for the intended use of this truss.
  - Recommend 2x6 strongbacks, on edge, spaced at 10-0-0-0 oc and fastened to each truss with 3-10d (0.131" X 3") nails. Strongbacks to be attached to walls at their outer ends or restrained by other means.
  - CAUTION, Do not erect truss backwards.

LOAD CASE(S)	Standard
1) Dead + Floor Live (balanced): Lumber Increase=1.00, Plate Increase=1.00	
Uniform Loads (lb/ft)	
Vert: 15-24=-8, 1-27=-112, 27-28=-141, 7-28=-112, 7-14=-80	





Job	Truss	Truss Type	Qty	Ply	MUNGO HOMES - TELFAIR 2ND FLR
72435959	F210	Truss	2	1	Job Reference (optional)

UFP Mid Atlantic LLC, 5631 S. NC 62, Burlington, NC, Joy Perry

Run: 8.81 S Sep 13 2024 Print: 8.810 S Sep 13 2024 MiTek Industries, Inc. Mon Nov 18 08:16:55

Page: 1

ID:a?q6?71yTv6SHVH?OIzqv2z8gqv-GHW7cSdZyl41kz9GSsGgEidwFYpEBaVW7nyNjMyl0es

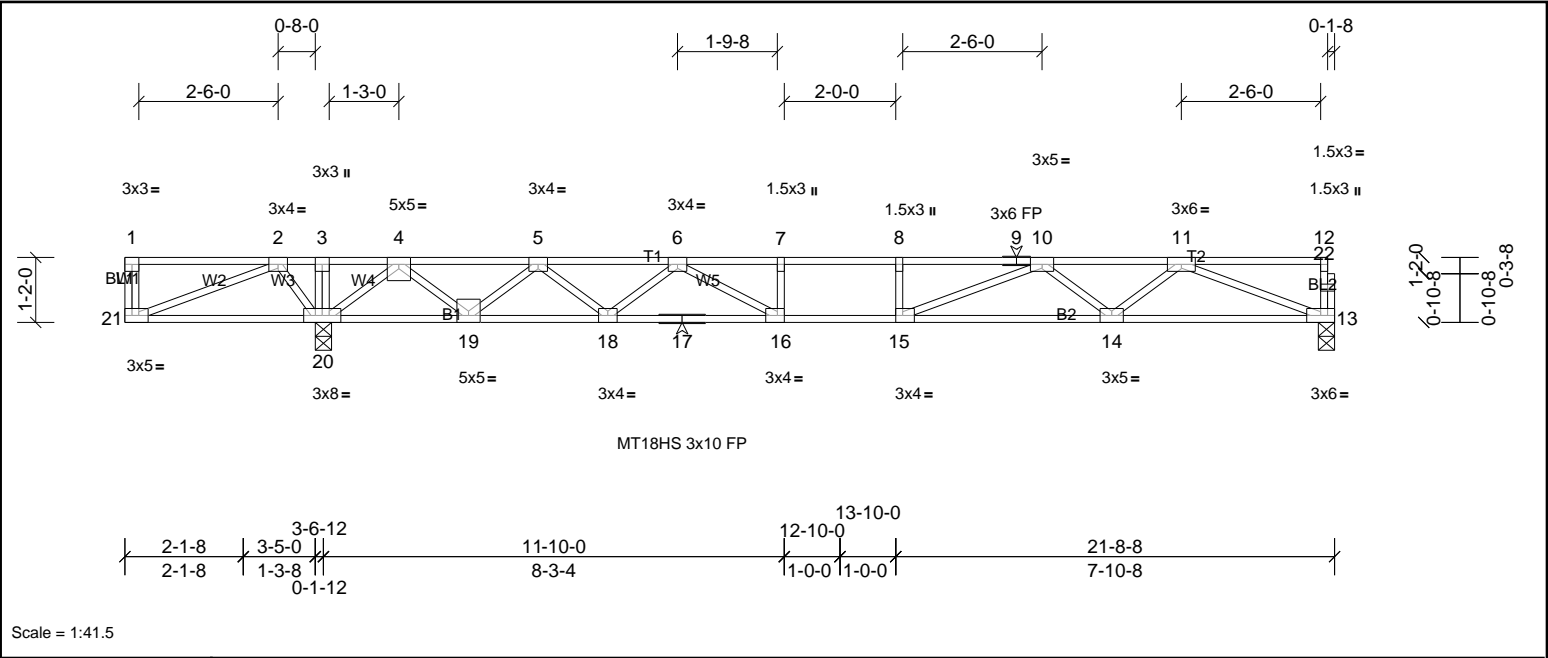


Plate Offsets (X, Y): [15:0-1-8,Edge], [16:0-1-8,Edge], [21:0-2-0,Edge]

Loading	(psf)	Spacing	2-0-0	CSI	DEFL	in	(loc)	I/defl	L/d	PLATES	GRIP
TCLL	40.0	Plate Grip DOL	1.00	TC	0.83	Vert(LL)	-0.35	15-16	>621	480	MT18HS 244/190
TCDL	10.0	Lumber DOL	1.00	BC	0.95	Vert(CT)	-0.46	15-16	>467	360	MT20 244/190
BCLL	0.0	Rep Stress Incr	YES	WB	0.63	Horz(CT)	0.07	13	n/a	n/a	
BCDL	5.0	Code	IRC2015/TPI2014	Matrix-SH							Weight: 108 lb FT = 20%F, 12%E

<b>LUMBER</b>		<b>BRACING</b>	
TOP CHORD	2x4 SP No.2(flat)	TOP CHORD	Structural wood sheathing directly applied or 2-2-0 oc purlins, except end verticals.
BOT CHORD	2x4 SP No.1(flat)	BOT CHORD	Rigid ceiling directly applied or 2-2-0 oc bracing.
WEBS	2x4 SP No.3(flat)		
OTHERS	2x4 SP No.3(flat)		
<b>REACTIONS</b>	(lb/size)	13=949/0-3-8, (min. 0-1-8), 20=1405/0-3-8, (min. 0-1-8)	
	Max Grav	13=975 (LC 4), 20=1405 (LC 1)	
<b>FORCES</b>	(lb) - Max. Comp./Max. Ten. - All forces 250 (lb) or less except when shown.		
TOP CHORD	2-3=0/612, 3-4=0/611, 4-5=-1942/0, 5-6=-3330/0, 6-7=-4164/0, 7-8=-4164/0, 8-9=-4164/0, 9-10=-4164/0, 10-11=-2838/0		
BOT CHORD	20-21=-298/0, 19-20=-239/1071, 18-19=0/2794, 17-18=0/3825, 16-17=0/3825, 15-16=0/4164, 14-15=0/3474, 13-14=0/2152		
WEBS	7-16=-278/0, 8-15=-256/0, 2-21=0/320, 2-20=-514/0, 4-20=-1585/0, 4-19=0/1175, 5-19=-1146/0, 5-18=0/732, 6-18=-692/0, 6-16=-50/851, 11-13=-2309/0, 11-14=0/893, 10-14=-828/0, 10-15=0/1001		

- NOTES**
- Unbalanced floor live loads have been considered for this design.
  - All plates are MT20 plates unless otherwise indicated.
  - This truss is designed in accordance with the 2015 International Residential Code sections R502.11.1 and R802.10.2 and referenced standard ANSI/TPI 1.
  - Recommend 2x6 strongbacks, on edge, spaced at 10-00-00 oc and fastened to each truss with 3-10d (0.131" X 3") nails. Strongbacks to be attached to walls at their outer ends or restrained by other means.
  - CAUTION, Do not erect truss backwards.



Job	Truss	Truss Type	Qty	Ply	MUNGO HOMES - TELFAIR 2ND FLR
72435959	F211	Truss	3	1	Job Reference (optional)

UFP Mid Atlantic LLC, 5631 S. NC 62, Burlington, NC, Joy Perry

Run: 8.81 S Sep 13 2024 Print: 8.810 S Sep 13 2024 MiTek Industries, Inc. Mon Nov 18 08:16:55

Page: 1

ID:a?q6?771yTv6SHVH?OIzqv2z8gqv-GHw7cSdZyl41kz9GSsGgEidvCYs2B9zW7nyNjMyl0es

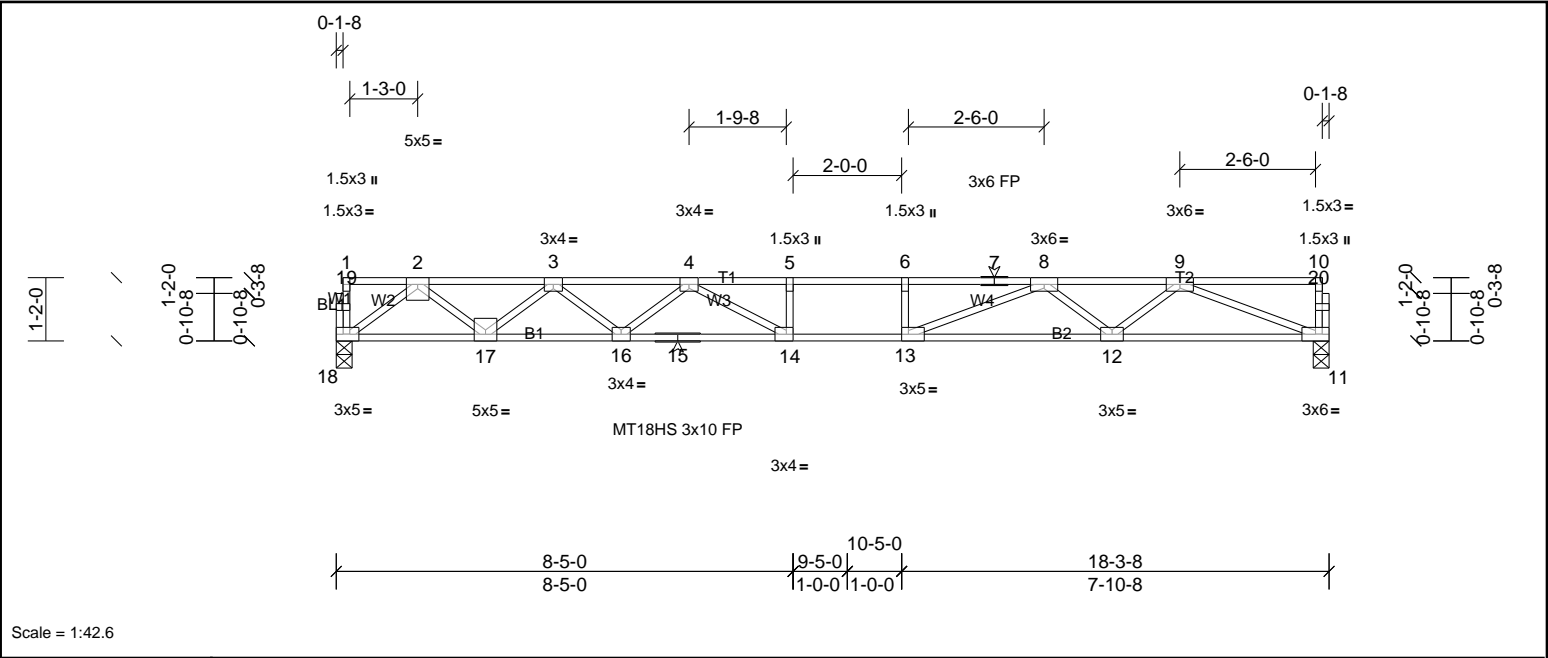


Plate Offsets (X, Y): [13:0-1-8,Edge], [14:0-1-8,Edge], [18:0-2-0,Edge]

Loading	(psf)	Spacing	2-1-0	CSI		DEFL	in	(loc)	I/defl	L/d	PLATES	GRIP
TCLL	40.0	Plate Grip DOL	1.00	TC	0.83	Vert(LL)	-0.32	13-14	>667	480	MT18HS	244/190
TCDL	10.0	Lumber DOL	1.00	BC	0.71	Vert(CT)	-0.45	14	>485	360	MT20	244/190
BCLL	0.0	Rep Stress Incr	NO	WB	0.67	Horz(CT)	0.07	11	n/a	n/a		
BCDL	5.0	Code	IRC2015/TPI2014	Matrix-SH							Weight: 89 lb	FT = 20%F, 12%E

LUMBER		BRACING	
TOP CHORD	2x4 SP No.1(flat)	TOP CHORD	2-0-0 oc purlins (5-9-13 max.); 1-10
BOT CHORD	2x4 SP SS(flat)		(Switched from sheeted: Spacing > 2-0-0).
WEBS	2x4 SP No.3(flat)	BOT CHORD	Rigid ceiling directly applied or 10-0-0 oc bracing.
OTHERS	2x4 SP No.3(flat)		

REACTIONS	(lb/size)	11=1027/0-3-8, (min. 0-1-8), 18=1027/0-3-8, (min. 0-1-8)
FORCES	(lb) - Max. Comp./Max. Ten. - All forces 250 (lb) or less except when shown.	
TOP CHORD	2-3=-2189/0, 3-4=-3605/0, 4-5=-4428/0, 5-6=-4428/0, 6-7=-4428/0, 7-8=-4428/0, 8-9=-2995/0	
BOT CHORD	17-18=0/1287, 16-17=0/3061, 15-16=0/4107, 14-15=0/4107, 13-14=0/4428, 12-13=0/3672, 11-12=0/2268	
WEBS	5-14=-254/0, 6-13=-276/0, 2-18=-1611/0, 2-17=0/1175, 3-17=-1135/0, 3-16=0/709, 4-16=-653/0, 4-14=-88/763, 9-11=-2433/0, 9-12=0/946, 8-12=-881/0, 8-13=0/1083	

- NOTES**
- Unbalanced floor live loads have been considered for this design.
  - All plates are MT20 plates unless otherwise indicated.
  - This truss is designed in accordance with the 2015 International Residential Code sections R502.11.1 and R802.10.2 and referenced standard ANSI/TPI 1.
  - Graphical purlin representation does not depict the size or the orientation of the purlin along the top and/or bottom chord.
  - Recommend 2x6 strongbacks, on edge, spaced at 10-00-00 oc and fastened to each truss with 3-10d (0.131" X 3") nails. Strongbacks to be attached to walls at their outer ends or restrained by other means.



Job	Truss	Truss Type	Qty	Ply	MUNGO HOMES - TELFAIR 2ND FLR
72435959	F212	Truss	3	1	Job Reference (optional)

UFP Mid Atlantic LLC, 5631 S. NC 62, Burlington, NC, Joy Perry

Run: 8.81 S Sep 13 2024 Print: 8.810 S Sep 13 2024 MiTek Industries, Inc. Mon Nov 18 08:16:56

Page: 1

ID:a?q6?771yTv6SHVH?OIZqv2z8gqv-kTUVqneBjcCuL6kS?ZnvnvA5ax8kwcDfMRixFoyl0er

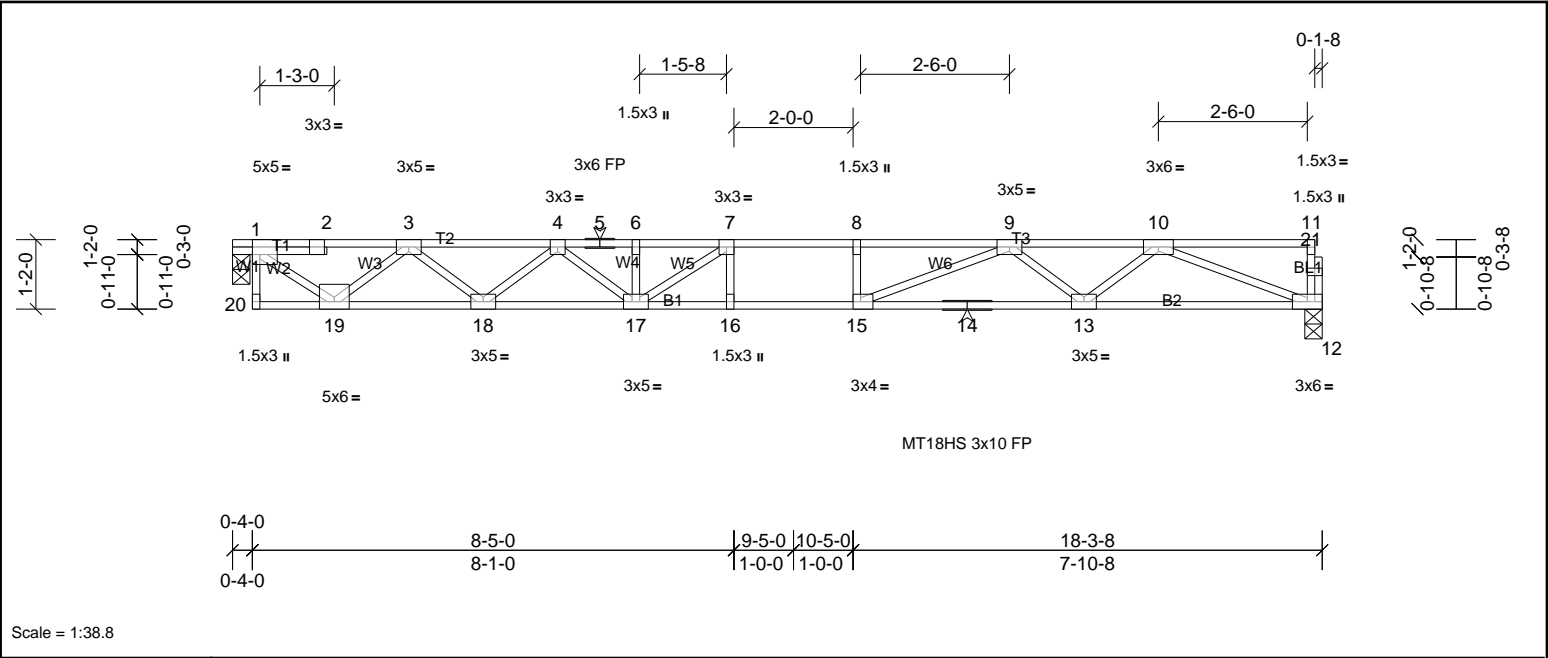


Plate Offsets (X, Y): [1:0-1-8,Edge], [15:0-1-8,Edge]												
<b>Loading</b>	(psf)	<b>Spacing</b>	2-0-0	<b>CSI</b>		<b>DEFL</b>	in	(loc)	I/defl	L/d	<b>PLATES</b>	<b>GRIP</b>
TCLL	40.0	Plate Grip DOL	1.00	TC	0.79	Vert(LL)	-0.32	15-16	>659	480	MT20	244/190
TCDL	10.0	Lumber DOL	1.00	BC	1.00	Vert(CT)	-0.44	15-16	>479	360	MT18HS	244/190
BCLL	0.0	Rep Stress Incr	YES	WB	0.66	Horz(CT)	0.02	12	n/a	n/a		
BCDL	5.0	Code	IRC2015/TPI2014	Matrix-SH							Weight: 90 lb	FT = 20%F, 12%E

<b>LUMBER</b>		<b>BRACING</b>	
TOP CHORD	2x4 SP No.2(flat)	TOP CHORD	Structural wood sheathing directly applied or 4-8-2 oc purlins, except end verticals.
BOT CHORD	2x4 SP No.1(flat)	BOT CHORD	Rigid ceiling directly applied or 10-0-0 oc bracing, Except:
WEBS	2x4 SP No.3(flat)		2-2-0 oc bracing: 16-17
OTHERS	2x4 SP No.3(flat)		1-4-12 oc bracing: 15-16.

<b>REACTIONS</b>	(lb/size)	1=977/0-3-8, (min. 0-1-8), 12=971/0-3-8, (min. 0-1-8)
<b>FORCES</b>	(lb) - Max. Comp./Max. Ten. - All forces 250 (lb) or less except when shown.	
TOP CHORD	1-2=-1123/0, 2-3=-1119/0, 3-4=-2770/0, 4-5=-3829/0, 5-6=-3829/0, 6-7=-3829/0, 7-8=-4128/0, 8-9=-4128/0, 9-10=-2823/0	
BOT CHORD	18-19=0/2095, 17-18=0/3415, 16-17=0/4128, 15-16=0/4128, 14-15=0/3453, 13-14=0/3453, 12-13=0/2142	
WEBS	1-19=0/1396, 3-19=-1271/0, 3-18=0/879, 4-18=-839/0, 4-17=0/529, 7-17=-752/124, 10-12=-2297/0, 10-13=0/887, 9-13=-821/0, 9-15=0/978	

- NOTES**
- 1) Unbalanced floor live loads have been considered for this design.
  - 2) All plates are MT20 plates unless otherwise indicated.
  - 3) This truss is designed in accordance with the 2015 International Residential Code sections R502.11.1 and R802.10.2 and referenced standard ANSI/TPI 1.
  - 4) Recommend 2x6 strongbacks, on edge, spaced at 10-00-00 oc and fastened to each truss with 3-10d (0.131" X 3") nails. Strongbacks to be attached to walls at their outer ends or restrained by other means.
  - 5) Gap between inside of top chord bearing and first diagonal or vertical web shall not exceed 0.500in.
  - 6) CAUTION, Do not erect truss backwards.



Job	Truss	Truss Type	Qty	Ply	MUNGO HOMES - TELFAIR 2ND FLR
72435959	F213	Truss	2	1	Job Reference (optional)

UFP Mid Atlantic LLC, 5631 S. NC 62, Burlington, NC, Joy Perry

Run: 8.81 S Sep 13 2024 Print: 8.810 S Sep 13 2024 MiTek Industries, Inc. Mon Nov 18 08:16:56

Page: 1

ID:Tzyozj?SbaaOv3PhrRrjT3yJGb2-kTUVqneBjcCuL6kS?ZnvnvACxxJkwI8fMRixFoyI0er

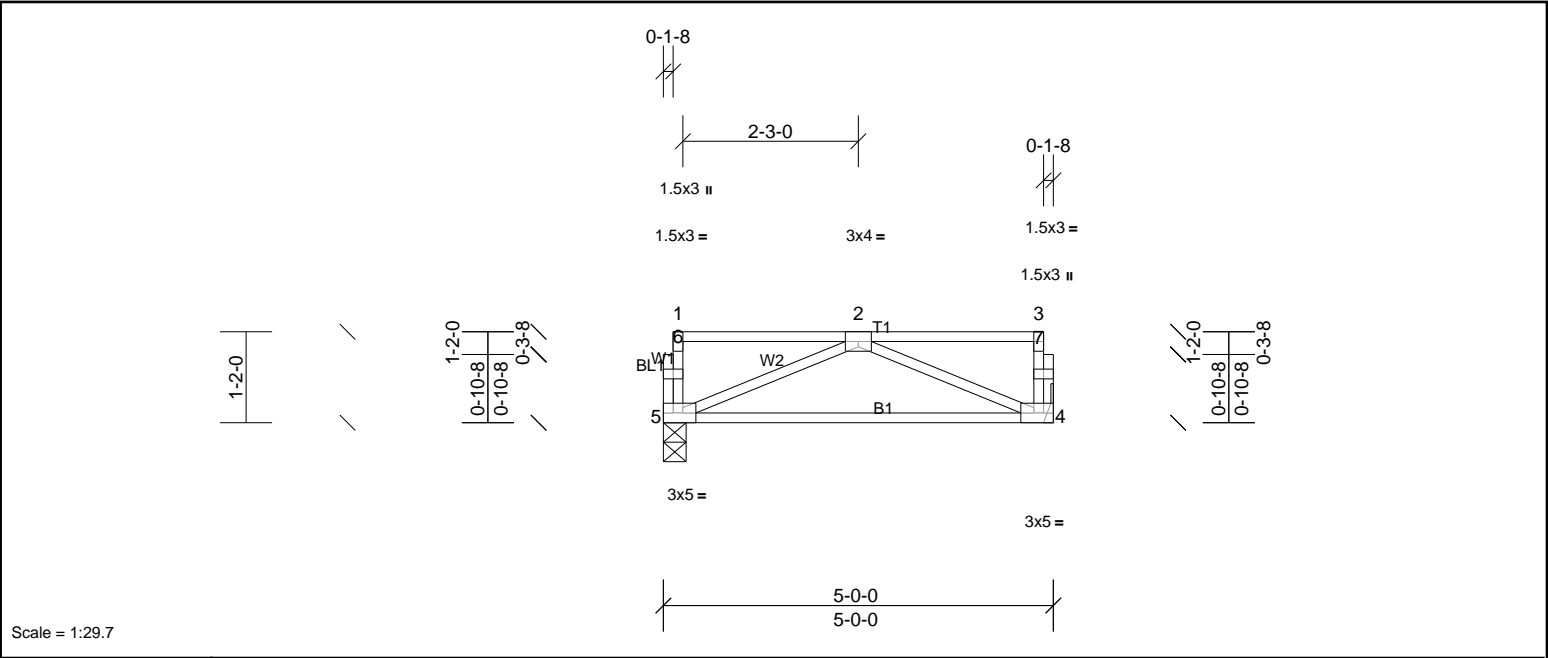


Plate Offsets (X, Y): [4:0-2-0,Edge], [5:0-2-0,Edge]

Loading	(psf)	Spacing	2-0-0	CSI		DEFL	in	(loc)	I/defl	L/d	PLATES	GRIP
TCLL	40.0	Plate Grip DOL	1.00	TC	0.32	Vert(LL)	n/a	-	n/a	999	MT20	244/190
TCDL	10.0	Lumber DOL	1.00	BC	0.30	Vert(CT)	-0.08	4-5	>686	360		
BCLL	0.0	Rep Stress Incr	YES	WB	0.09	Horz(CT)	0.00	4	n/a	n/a		
BCDL	5.0	Code	IRC2015/TPI2014	Matrix-SH							Weight: 27 lb	FT = 20%F, 12%E

LUMBER		BRACING	
TOP CHORD	2x4 SP No.2(flat)	TOP CHORD	Structural wood sheathing directly applied or 5-0-0 oc purlins, except end verticals.
BOT CHORD	2x4 SP No.2(flat)	BOT CHORD	Rigid ceiling directly applied or 10-0-0 oc bracing.
WEBS	2x4 SP No.3(flat)		
OTHERS	2x4 SP No.3(flat)		

REACTIONS	(lb/size)	4=255/ Mechanical, (min. 0-1-8), 5=255/0-3-8, (min. 0-1-8)
FORCES	(lb) - Max. Comp./Max. Ten. - All forces 250 (lb) or less except when shown.	
BOT CHORD	4-5=0/332	
WEBS	2-5=-357/0, 2-4=-357/0	

- NOTES**
- This truss is designed in accordance with the 2015 International Residential Code sections R502.11.1 and R802.10.2 and referenced standard ANSI/TPI 1.
  - Recommend 2x6 strongbacks, on edge, spaced at 10-00-00 oc and fastened to each truss with 3-10d (0.131" X 3") nails. Strongbacks to be attached to walls at their outer ends or restrained by other means.





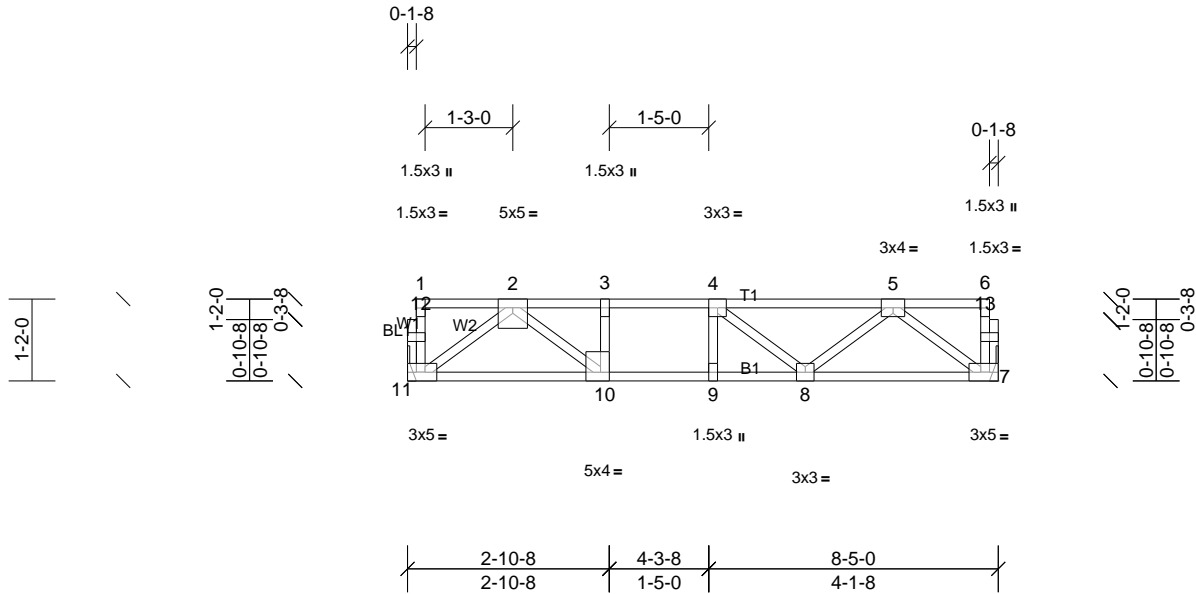
Job 72435959	Truss F214	Truss Type Truss	Qty 3	Ply 1	MUNGO HOMES - TELFAIR 2ND FLR Job Reference (optional)
-----------------	---------------	---------------------	----------	----------	---

UFP Mid Atlantic LLC, 5631 S. NC 62, Burlington, NC, Joy Perry

Run: 8.81 S Sep 13 2024 Print: 8.810 S Sep 13 2024 MiTek Industries, Inc. Mon Nov 18 08:16:56

Page: 1

ID:22eXVdwFJYVtLYgmhyG4vWyJGcQ-kTUVqneBjcCuL6kS?ZnvnvA5?x8?weXfMRixFoyI0er



Scale = 1:33												
Plate Offsets (X, Y): [7:0-2-0,Edge], [10:0-1-8,Edge], [11:0-2-0,Edge]												
<b>Loading</b>	(psf)	<b>Spacing</b>	2-0-0	<b>CSI</b>		<b>DEFL</b>	in	(loc)	l/defl	L/d	<b>PLATES</b>	<b>GRIP</b>
TCLL	40.0	Plate Grip DOL	1.00	TC	0.83	Vert(LL)	-0.07	8-9	>999	480	MT20	244/190
TCDL	10.0	Lumber DOL	1.00	BC	0.98	Vert(CT)	-0.13	8-9	>781	360		
BCLL	0.0	Rep Stress Incr	NO	WB	0.52	Horz(CT)	0.02	7	n/a	n/a		
BCDL	5.0	Code	IRC2015/TPI2014	Matrix-SH							Weight: 44 lb	FT = 20%F, 12%E

<b>LUMBER</b>		<b>BRACING</b>	
TOP CHORD	2x4 SP No.1(flat)	TOP CHORD	Structural wood sheathing directly applied or 6-0-0 oc purlins, except end verticals.
BOT CHORD	2x4 SP No.1(flat)	BOT CHORD	Rigid ceiling directly applied or 10-0-0 oc bracing.
WEBS	2x4 SP No.3(flat)		
OTHERS	2x4 SP No.3(flat)		
<b>REACTIONS</b>	(lb/size)	7=1086/ Mechanical, (min. 0-1-8), 11=1086/ Mechanical, (min. 0-1-8)	
<b>FORCES</b>	(lb) - Max. Comp./Max. Ten. - All forces 250 (lb) or less except when shown.		
TOP CHORD	2-3=-2088/0, 3-4=-2088/0, 4-5=-1780/0		
BOT CHORD	10-11=0/1254, 9-10=0/2088, 8-9=0/2088, 7-8=0/1344		
WEBS	5-7=-1681/0, 2-11=-1562/0, 5-8=0/568, 2-10=0/1084, 4-8=-446/0, 3-10=-502/0		
<b>NOTES</b>			
1)	Unbalanced floor live loads have been considered for this design.		
2)	This truss is designed in accordance with the 2015 International Residential Code sections R502.11.1 and R802.10.2 and referenced standard ANSI/TPI 1.		
3)	Load case(s) 1 has/have been modified. Building designer must review loads to verify that they are correct for the intended use of this truss.		
4)	Magnitude of user added load(s) on this truss have been applied uniformly across all gravity load cases with no adjustments.		
5)	Recommend 2x6 strongbacks, on edge, spaced at 10-00-00 oc and fastened to each truss with 3-10d (0.131" X 3") nails. Strongbacks to be attached to walls at their outer ends or restrained by other means.		
<b>LOAD CASE(S)</b> Standard			
1)	Dead + Floor Live (balanced): Lumber Increase=1.00, Plate Increase=1.00		
	Uniform Loads (lb/ft)		
	Vert: 7-11=-10, 1-6=-260		



This design is based upon parameters shown, and is for an individual building component to be installed and loaded vertically. Applicability of design parameters and proper incorporation of component is responsibility of the Building Designer. Building Designer shall verify all design information on this sheet for conformance with conditions and requirements of the specific building and governing codes and ordinances. Building Designer accepts responsibility for the correctness or accuracy of the design information as it may relate to a specific building. Certification is valid only when truss is fabricated by a UFPI plant. Bracing shown is for lateral support of truss members only and does not replace erection and permanent bracing. Refer to Building Component Safety Information (BCSI) for general guidance regarding storage, erection and bracing available from SBCA and Truss Plate Institute.



Job	Truss	Truss Type	Qty	Ply	MUNGO HOMES - TELFAIR 2ND FLR
72435959	FG1	Truss	1	1	Job Reference (optional)

UFP Mid Atlantic LLC, 5631 S. NC 62, Burlington, NC, Joy Perry

Run: 8.81 S Sep 13 2024 Print: 8.810 S Sep 13 2024 MiTek Industries, Inc. Mon Nov 18 08:16:56

Page: 1

ID:a?q6?71yTv6SHVH?OIzqv2z8gqv-kTUVqneBjcCuL6kS?ZnvnvAAexBDwcvfMRixFoyl0er

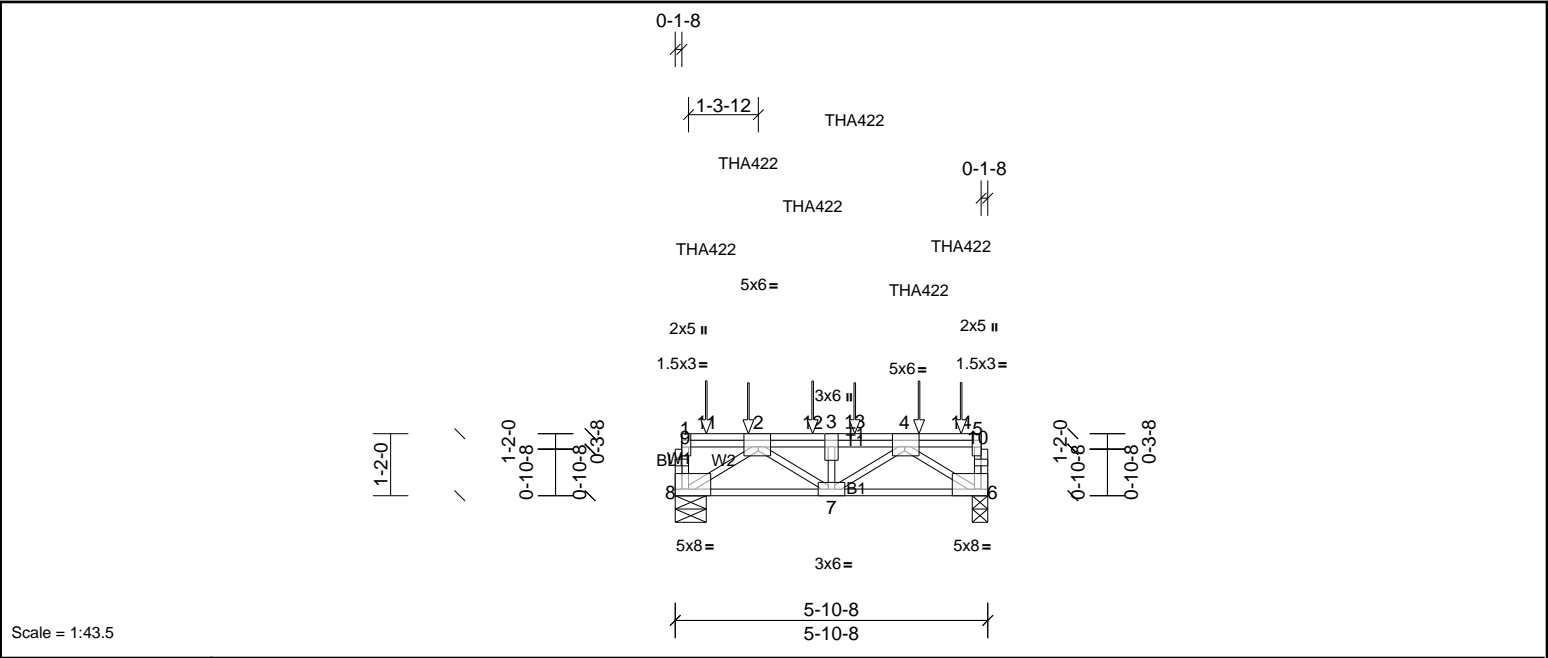


Plate Offsets (X, Y): [2:0-2-12,Edge], [4:0-2-12,Edge], [5:0-3-0,Edge], [6:Edge,0-1-8], [8:Edge,0-1-8]

Loading	(psf)	Spacing	2-0-0	CSI	DEFL	in	(loc)	I/defl	L/d	PLATES	GRIP
TCLL	40.0	Plate Grip DOL	1.00	TC	0.47	Vert(LL)	-0.03	7	>999	480	MT20
TCDL	10.0	Lumber DOL	1.00	BC	0.78	Vert(CT)	-0.05	7	>999	360	244/190
BCLL	0.0	Rep Stress Incr	NO	WB	0.68	Horz(CT)	0.02	6	n/a	n/a	
BCDL	5.0	Code	IRC2015/TPI2014	Matrix-SH							Weight: 40 lb FT = 20%F, 12%E

LUMBER		BRACING	
TOP CHORD	2x4 SP No.2(flat)	TOP CHORD	Structural wood sheathing directly applied or 5-10-8 oc purlins, except end verticals.
BOT CHORD	2x4 SP No.2(flat)	BOT CHORD	Rigid ceiling directly applied or 10-0-0 oc bracing.
WEBS	2x4 SP No.3(flat)		
OTHERS	2x4 SP No.3(flat)		

REACTIONS	(lb/size)	6=2099/0-3-8, (min. 0-1-8), 8=2197/0-7-0, (min. 0-1-8)
FORCES	(lb) - Max. Comp./Max. Ten. - All forces 250 (lb) or less except when shown.	
TOP CHORD	8-9=-573/0, 1-9=-572/0, 6-10=-447/0, 5-10=-446/0, 2-12=-3179/0, 3-12=-3179/0, 3-13=-3179/0, 4-13=-3179/0	
BOT CHORD	7-8=0/2399, 6-7=0/2431	
WEBS	2-8=-2859/0, 3-7=-1063/0, 2-7=0/957, 4-6=-2907/0, 4-7=0/918	

- NOTES**
- This truss is designed in accordance with the 2015 International Residential Code sections R502.11.1 and R802.10.2 and referenced standard ANSI/TPI 1.
  - Recommend 2x6 strongbacks, on edge, spaced at 10-00-00 oc and fastened to each truss with 3-10d (0.131" X 3") nails. Strongbacks to be attached to walls at their outer ends or restrained by other means.
  - Use Simpson Strong-Tie THA422 (6-16d Girder, 6-10d Truss) or equivalent spaced at 2-0-0 oc max. starting at 0-7-0 from the left end to 4-7-0 to connect truss(es) to front face of top chord.
  - Use Simpson Strong-Tie THA422 (6-16d Girder, 6-10d Truss) or equivalent at 1-4-8 from the left end to connect truss(es) to back face of top chord.
  - Use Simpson Strong-Tie THA422 (6-16d Girder, 6-10d Truss) or equivalent spaced at 2-0-0 oc max. starting at 3-4-8 from the left end to 5-4-8 to connect truss(es) to back face of top chord.
  - Fill all nail holes where hanger is in contact with lumber.
  - In the LOAD CASE(S) section, loads applied to the face of the truss are noted as front (F) or back (B).

LOAD CASE(S)	Standard
1) Dead + Floor Live (balanced): Lumber Increase=1.00, Plate Increase=1.00	
Uniform Loads (lb/ft)	
Vert: 6-8=-10, 1-5=-100	
Concentrated Loads (lb)	
Vert: 2=-467 (B), 4=-742 (F), 11=-772 (F), 12=-742 (F), 13=-467 (B), 14=-501 (B)	



This design is based upon parameters shown, and is for an individual building component to be installed and loaded vertically. Applicability of design parameters and proper incorporation of component is responsibility of the Building Designer. Building Designer shall verify all design information on this sheet for conformance with conditions and requirements of the specific building and governing codes and ordinances. Building Designer accepts responsibility for the correctness or accuracy of the design information as it may relate to a specific building. Certification is valid only when truss is fabricated by a UFPI plant. Bracing shown is for lateral support of truss members only and does not replace erection and permanent bracing. Refer to Building Component Safety Information (BCSI) for general guidance regarding storage, erection and bracing available from SBCA and Truss Plate Institute.



Job	Truss	Truss Type	Qty	Ply	MUNGO HOMES - TELFAIR 2ND FLR
72435959	FG2	Truss	1	1	Job Reference (optional)

UFP Mid Atlantic LLC, 5631 S. NC 62, Burlington, NC, Joy Perry

Run: 8.81 S Sep 13 2024 Print: 8.810 S Sep 13 2024 MiTek Industries, Inc. Mon Nov 18 08:16:56

Page: 1

ID:a?q6?71yTv6SHVH?OIzqv2z8gqv-kTUVqneBjcCuL6kS?ZnvnvA5\_xANwa8fMRixFoyl0er

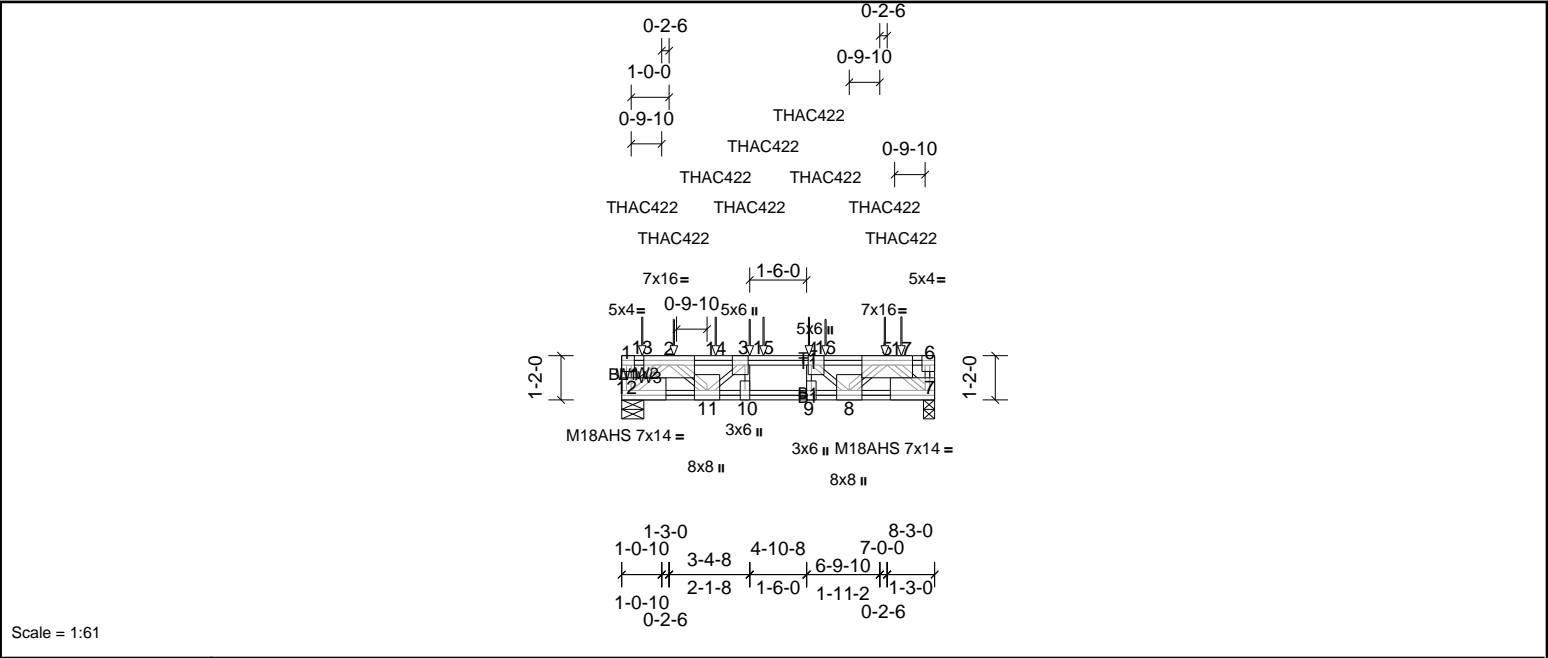


Plate Offsets (X, Y): [1:Edge,0-3-0], [3:0-3-0,Edge], [4:0-3-0,Edge], [6:0-1-8,Edge], [7:Edge,0-3-0], [9:0-3-0,Edge], [12:Edge,0-3-0]												
<b>Loading</b>	(psf)	<b>Spacing</b>	2-0-0	<b>CSI</b>		<b>DEFL</b>	in	(loc)	L/defl	L/d	<b>PLATES</b>	<b>GRIP</b>
TCLL	40.0	Plate Grip DOL	1.00	TC	0.83	Vert(LL)	-0.07	10-11	>999	480	M18AHS	186/179
TCDL	10.0	Lumber DOL	1.00	BC	0.83	Vert(CT)	-0.13	10	>766	360	MT20	244/190
BCLL	0.0	Rep Stress Incr	NO	WB	0.80	Horz(CT)	0.03	7	n/a	n/a		
BCDL	5.0	Code	IRC2015/TPI2014	Matrix-SH							Weight: 72 lb	FT = 20%F, 12%E

<b>LUMBER</b>		<b>BRACING</b>	
TOP CHORD	2x4 SP No.1(flat)	TOP CHORD	Structural wood sheathing directly applied or 5-4-12 oc purlins, except end verticals.
BOT CHORD	2x4 SP SS(flat)	BOT CHORD	Rigid ceiling directly applied or 10-0-0 oc bracing.
WEBS	2x4 SP No.3(flat)		
OTHERS	2x4 SP No.3(flat)		

<b>REACTIONS</b>	(lb/size)	7=4416/0-3-8, (min. 0-3-0), 12=4274/0-7-0, (min. 0-2-14)
	Max Grav	7=4446 (LC 4), 12=4274 (LC 1)

<b>FORCES</b>	(lb) - Max. Comp./Max. Ten. - All forces 250 (lb) or less except when shown.
TOP CHORD	1-12=-566/0, 6-7=-368/0, 2-14=-6834/0, 3-14=-6834/0, 3-15=-8947/0, 4-15=-8947/0, 4-16=-6969/0, 5-16=-6969/0
BOT CHORD	11-12=0/4523, 10-11=0/8962, 9-10=0/8947, 8-9=0/8941, 7-8=0/4979
WEBS	3-10=-619/300, 4-9=-390/523, 2-12=-5835/0, 2-11=0/3349, 3-11=-3424/0, 5-8=0/3105, 4-8=-3345/0, 5-7=-6423/0

- NOTES**
- Unbalanced floor live loads have been considered for this design.
  - All plates are MT20 plates unless otherwise indicated.
  - The Fabrication Tolerance at joint 12 = 8%, joint 7 = 8%
  - This truss is designed in accordance with the 2015 International Residential Code sections R502.11.1 and R802.10.2 and referenced standard ANSI/TPI 1.
  - Recommend 2x6 strongbacks, on edge, spaced at 10-00-00 oc and fastened to each truss with 3-10d (0.131" X 3") nails. Strongbacks to be attached to walls at their outer ends or restrained by other means.
  - Use Simpson Strong-Tie THAC422 (6-16d Girder, 6-16d Truss) or equivalent spaced at 2-0-0 oc max. starting at 1-4-8 from the left end to 7-4-8 to connect truss(es) to front face of top chord.
  - Use Simpson Strong-Tie THAC422 (6-16d Girder, 6-16d Truss) or equivalent spaced at 2-0-0 oc max. starting at 0-6-8 from the left end to 6-11-4 to connect truss(es) to back face of top chord.
  - Fill all nail holes where hanger is in contact with lumber.
  - In the LOAD CASE(S) section, loads applied to the face of the truss are noted as front (F) or back (B).

<b>LOAD CASE(S)</b>	Standard
1) Dead + Floor Live (balanced): Lumber Increase=1.00, Plate Increase=1.00	
Uniform Loads (lb/ft)	
Vert: 7-12=-10, 1-6=-100	
Concentrated Loads (lb)	
Vert: 3=-467 (F), 4=-1044 (B), 2=-467 (F), 5=-1044 (B), 13=-1074 (B), 14=-1044 (B), 15=-1044 (B), 16=-467 (F), 17=-1159 (F)	





Job	Truss	Truss Type	Qty	Ply	MUNGO HOMES - TELFAIR 2ND FLR
72435959	FG4	Truss	2	1	Job Reference (optional)

UFP Mid Atlantic LLC, 5631 S. NC 62, Burlington, NC, Joy Perry

Run: 8.81 S Sep 13 2024 Print: 8.810 S Sep 13 2024 MiTek Industries, Inc. Mon Nov 18 08:16:57

Page: 1

ID: \_JXHzVwhl7PPnsAyqUficOyJGW\_-Cg1t17fpUwKlzGJeZGI8J7jG9LeJf5Ypa5RUnFyl0eq

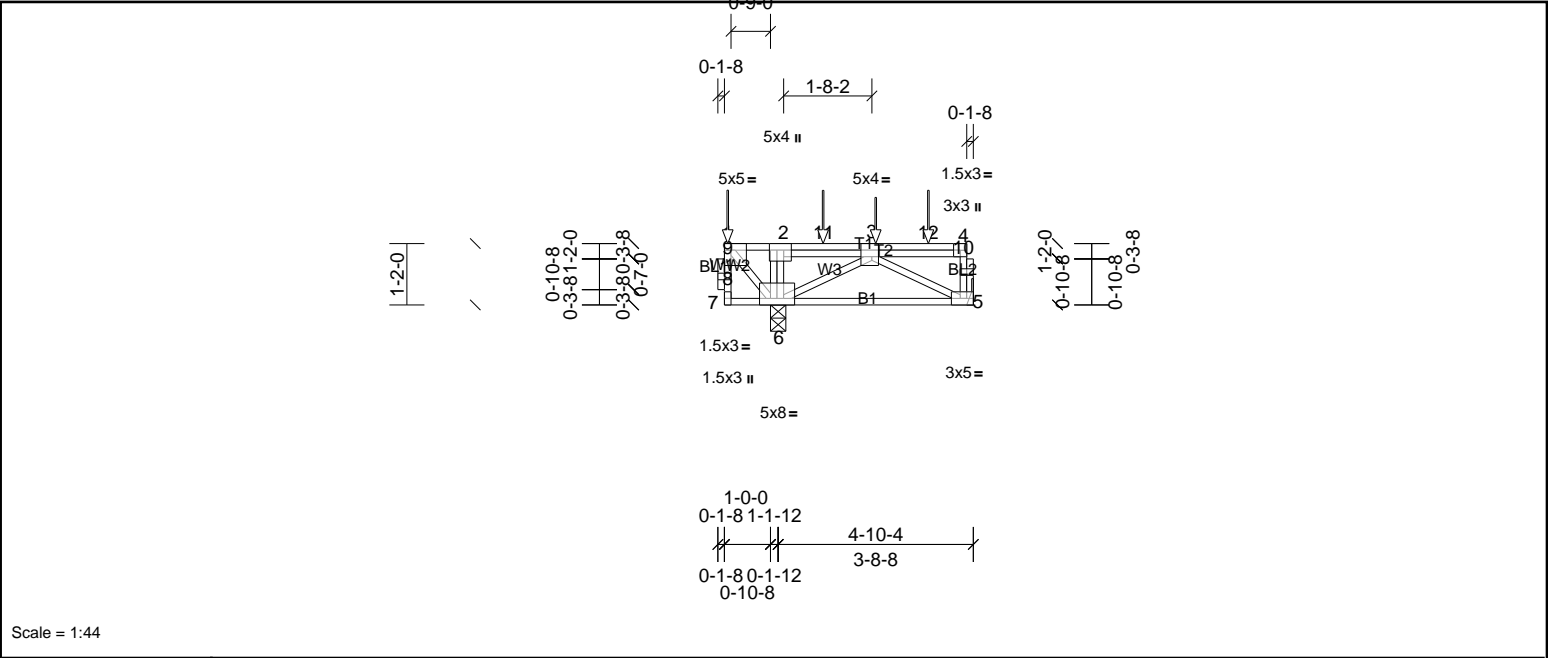


Plate Offsets (X, Y): [1:Edge,0-1-8], [3:0-1-8,Edge], [5:0-2-0,Edge]												
<b>Loading</b>	(psf)	<b>Spacing</b>	2-0-0	<b>CSI</b>		<b>DEFL</b>	in	(loc)	I/defl	L/d	<b>PLATES</b>	<b>GRIP</b>
TCLL	40.0	Plate Grip DOL	1.00	TC	0.80	Vert(LL)	0.01	5-6	>999	480	MT20	244/190
TCDL	10.0	Lumber DOL	1.00	BC	0.34	Vert(CT)	-0.01	5-6	>999	360		
BCLL	0.0	Rep Stress Incr	NO	WB	0.53	Horz(CT)	0.01	5	n/a	n/a		
BCDL	5.0	Code	IRC2015/TPI2014	Matrix-P							Weight: 34 lb	FT = 20%F, 12%E

<b>LUMBER</b>			<b>BRACING</b>		
TOP CHORD	2x4 SP No.1(flat)		TOP CHORD	Structural wood sheathing directly applied or 4-10-4 oc purlins, except end verticals.	
BOT CHORD	2x4 SP No.2(flat)		BOT CHORD	Rigid ceiling directly applied or 6-0-0 oc bracing.	
WEBS	2x4 SP No.3(flat)				
OTHERS	2x4 SP No.3(flat)				

<b>REACTIONS</b>	(lb/size)	5=882/ Mechanical, (min. 0-1-8), 6=3279/0-3-8, (min. 0-1-11)
	Max Grav	5=1031 (LC 4), 6=3279 (LC 1)

<b>FORCES</b>	(lb) - Max. Comp./Max. Ten. - All forces 250 (lb) or less except when shown.
TOP CHORD	5-10=-567/0, 4-10=-566/0, 1-2=0/1430, 2-11=0/1394, 3-11=0/1394
BOT CHORD	5-6=-144/865
WEBS	2-6=-678/0, 1-6=-2095/0, 3-6=-2194/0, 3-5=-946/182

- NOTES**
- Unbalanced floor live loads have been considered for this design.
  - This truss is designed in accordance with the 2015 International Residential Code sections R502.11.1 and R802.10.2 and referenced standard ANSI/TPI 1.
  - Load case(s) 1 has/have been modified. Building designer must review loads to verify that they are correct for the intended use of this truss.
  - Magnitude of user added load(s) on this truss have been applied uniformly across all gravity load cases with no adjustments.
  - Recommend 2x6 strongbacks, on edge, spaced at 10-00-00 oc and fastened to each truss with 3-10d (0.131" X 3") nails. Strongbacks to be attached to walls at their outer ends or restrained by other means.
  - CAUTION, Do not erect truss backwards.
  - Hanger(s) or other connection device(s) shall be provided sufficient to support concentrated load(s) 1044 lb down at 0-2-4, 986 lb down at 2-0-0, and 155 lb down at 3-0-0, and 1003 lb down at 4-0-0 on top chord. The design/selection of such connection device(s) is the responsibility of others.
  - In the LOAD CASE(S) section, loads applied to the face of the truss are noted as front (F) or back (B).

<b>LOAD CASE(S)</b>	Standard
1) Dead + Floor Live (balanced): Lumber Increase=1.00, Plate Increase=1.00	
Uniform Loads (lb/ft)	
Vert: 5-7=-10, 1-2=-180, 2-4=-100	
Concentrated Loads (lb)	
Vert: 1=-1438 (F=-1038), 3=-155 (B), 11=-986 (F), 12=-1003 (F)	



This design is based upon parameters shown, and is for an individual building component to be installed and loaded vertically. Applicability of design parameters and proper incorporation of component is responsibility of the Building Designer. Building Designer shall verify all design information on this sheet for conformance with conditions and requirements of the specific building and governing codes and ordinances. Building Designer accepts responsibility for the correctness or accuracy of the design information as it may relate to a specific building. Certification is valid only when truss is fabricated by a UFPI plant. Bracing shown is for lateral support of truss members only and does not replace erection and permanent bracing. Refer to Building Component Safety Information (BCSI) for general guidance regarding storage, erection and bracing available from SBCA and Truss Plate Institute.







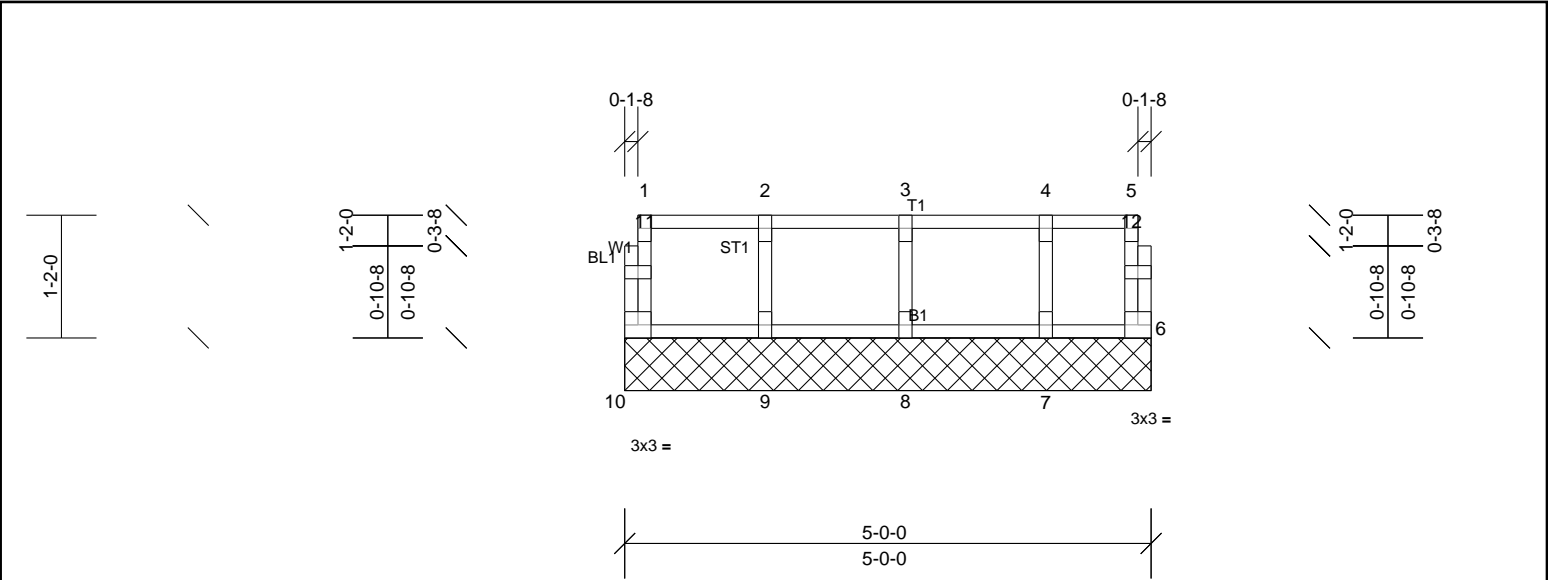
Job	Truss	Truss Type	Qty	Ply	MUNGO HOMES - TELFAIR 2ND FLR
72435959	K201	Truss	2	1	Job Reference (optional)

UFP Mid Atlantic LLC, 5631 S. NC 62, Burlington, NC, Joy Perry

Run: 8.81 S Sep 13 2024 Print: 8.810 S Sep 13 2024 MiTek Industries, Inc. Mon Nov 18 08:16:57

Page: 1

ID:aO80RvKyYhfBpci67OMqITyJGbv-Cg1t17fpUwKlzGJeZGI8J7jRTLjNfDMpa5RUnFyl0eq



Scale = 1:22

Loading	(psf)	Spacing	2-0-0	CSI		DEFL	in	(loc)	I/defl	L/d	PLATES	GRIP
TCLL	40.0	Plate Grip DOL	1.00	TC	0.08	Vert(LL)	n/a	-	n/a	999	MT20	244/190
TCDL	10.0	Lumber DOL	1.00	BC	0.02	Vert(TL)	n/a	-	n/a	999		
BCLL	0.0	Rep Stress Incr	YES	WB	0.03	Horiz(TL)	0.00	6	n/a	n/a		
BCDL	5.0	Code	IRC2015/TPI2014	Matrix-R							Weight: 24 lb	FT = 20%F, 12%E

LUMBER		BRACING	
TOP CHORD	2x4 SP No.2(flat)	TOP CHORD	Structural wood sheathing directly applied or 5-0-0 oc purlins, except end verticals.
BOT CHORD	2x4 SP No.2(flat)	BOT CHORD	Rigid ceiling directly applied or 10-0-0 oc bracing.
WEBS	2x4 SP No.3(flat)		
OTHERS	2x4 SP No.3(flat)		

**REACTIONS** All bearings 5-0-0.  
(lb) - Max Grav All reactions 250 (lb) or less at joint(s) 6, 7, 8, 9, 10

**FORCES** (lb) - Max. Comp./Max. Ten. - All forces 250 (lb) or less except when shown.

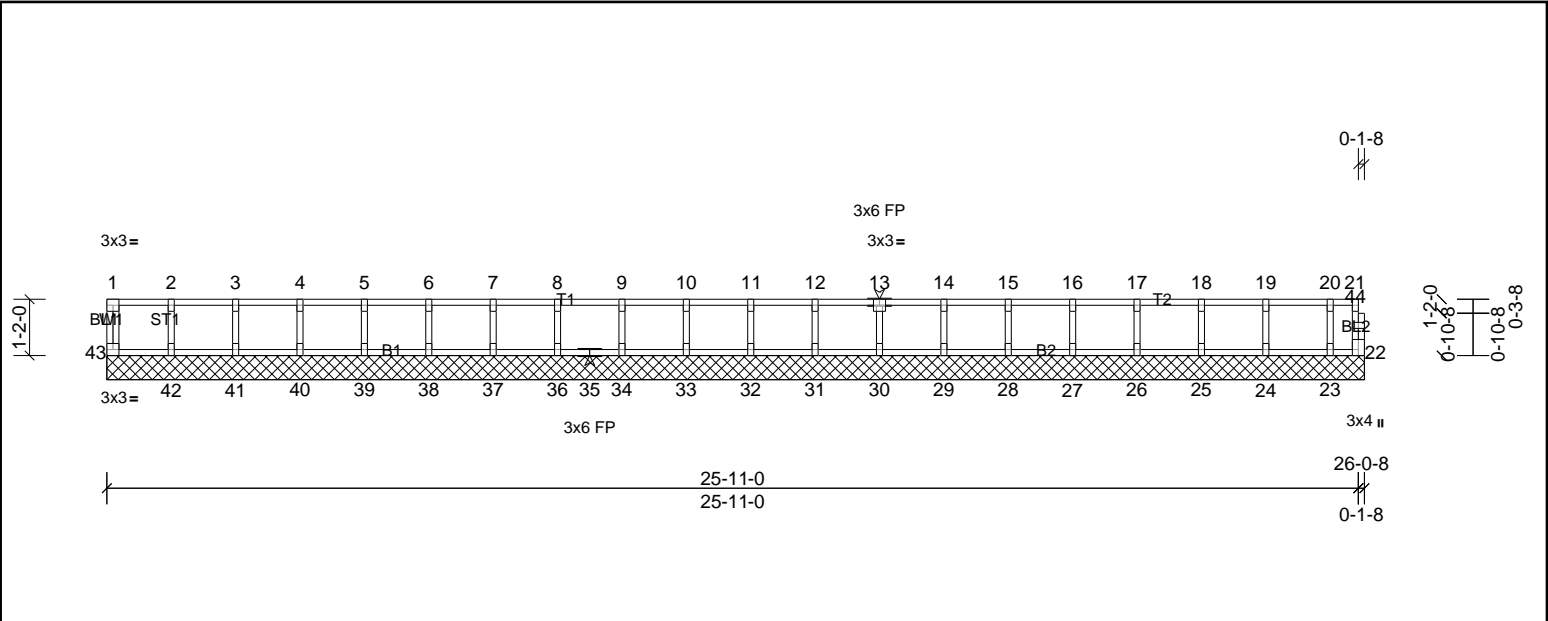
- NOTES**
- 1) All plates are 1.5x3 MT20 unless otherwise indicated.
  - 2) Gable requires continuous bottom chord bearing.
  - 3) Truss to be fully sheathed from one face or securely braced against lateral movement (i.e. diagonal web).
  - 4) Gable studs spaced at 1-4-0 oc.
  - 5) This truss is designed in accordance with the 2015 International Residential Code sections R502.11.1 and R802.10.2 and referenced standard ANSI/TPI 1.
  - 6) Recommend 2x6 strongbacks, on edge, spaced at 10-00-00 oc and fastened to each truss with 3-10d (0.131" X 3") nails. Strongbacks to be attached to walls at their outer ends or restrained by other means.







Job	Truss	Truss Type	Qty	Ply	MUNGO HOMES - TELFAIR 2ND FLR
72435959	K204	Truss	1	1	Job Reference (optional)



Scale = 1:47.9

<b>Loading</b>	(psf)	<b>Spacing</b>	2-0-0	<b>CSI</b>		<b>DEFL</b>	in	(loc)	I/defl	L/d	<b>PLATES</b>	<b>GRIP</b>
TCLL	40.0	Plate Grip DOL	1.00	TC	0.08	Vert(LL)	n/a	-	n/a	999	MT20	244/190
TCDL	10.0	Lumber DOL	1.00	BC	0.02	Vert(TL)	n/a	-	n/a	999		
BCLL	0.0	Rep Stress Incr	YES	WB	0.03	Horiz(TL)	0.00	22	n/a	n/a		
BCDL	5.0	Code	IRC2015/TPI2014	Matrix-R							Weight: 108 lb	FT = 20%F, 12%E

<b>LUMBER</b>		<b>BRACING</b>	
TOP CHORD	2x4 SP No.2(flat)	TOP CHORD	Structural wood sheathing directly applied or 6-0-0 oc purlins, except end verticals.
BOT CHORD	2x4 SP No.2(flat)	BOT CHORD	Rigid ceiling directly applied or 10-0-0 oc bracing.
WEBS	2x4 SP No.3(flat)		
OTHERS	2x4 SP No.3(flat)		

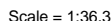
<b>REACTIONS</b>	All bearings 26-0-8.
(lb) - Max Grav	All reactions 250 (lb) or less at joint(s) 22, 23, 24, 25, 26, 27, 28, 29, 30, 31, 32, 33, 34, 36, 37, 38, 39, 40, 41, 42, 43

<b>FORCES</b>	(lb) - Max. Comp./Max. Ten. - All forces 250 (lb) or less except when shown.
---------------	--

- NOTES**
- 1) All plates are 1.5x3 MT20 unless otherwise indicated.
  - 2) Gable requires continuous bottom chord bearing.
  - 3) Truss to be fully sheathed from one face or securely braced against lateral movement (i.e. diagonal web).
  - 4) Gable studs spaced at 1-4-0 oc.
  - 5) Bearing at joint(s) 22 considers parallel to grain value using ANSI/TPI 1 angle to grain formula. Building designer should verify capacity of bearing surface.
  - 6) This truss is designed in accordance with the 2015 International Residential Code sections R502.11.1 and R802.10.2 and referenced standard ANSI/TPI 1.
  - 7) Recommend 2x6 strongbacks, on edge, spaced at 10-00-00 oc and fastened to each truss with 3-10d (0.131" X 3") nails. Strongbacks to be attached to walls at their outer ends or restrained by other means.



UFP Mid Atlantic LLC, 5631 S. NC 62, Burlington, NC, Joy Perry Run: 8.81 S Sep 13 2024 Print: 8.810 S Sep 13 2024 MiTek Industries, Inc. Mon Nov 18 08:16:58 Page: 1  
ID:a?q6?71yTv6SHVH?OIzQv2z8ggv-gsbFFTIRFDScbQur7\_pNsKfEI3/OgcypIB1JhyI0ep



<b>Loading</b>	(psf)	<b>Spacing</b>	2-0-0	<b>CSI</b>		<b>DEFL</b>	in	(loc)	I/defl	L/d	<b>PLATES</b>	<b>GRIP</b>
TCLL	40.0	Plate Grip DOL	1.00	TC	0.08	Vert(LL)	n/a	-	n/a	999	MT20	244/190
TCDL	10.0	Lumber DOL	1.00	BC	0.01	Vert(CT)	n/a	-	n/a	999		
BCLL	0.0	Rep Stress Incr	YES	WB	0.03	Horz(CT)	0.00	18	n/a	n/a		
BCDL	5.0	Code	IRC2015/TPI2014	Matrix-R							Weight: 77 lb	FT = 20%F, 12%E

<b>REACTIONS</b>	All bearings 18-3-8.
(lb) - Max Grav	All reactions 250 (lb) or less at joint(s) 18, 19, 20, 21, 22, 24, 25, 26, 27, 28, 29, 30, 31, 32, 33

**FORCES** (lb) - Max. Comp./Max. Ten. - All forces 250 (lb) or less except when shown.

- 1) All plates are 1.5x3 MT20 unless otherwise indicated.
- 2) Gable requires continuous bottom chord bearing.
- 3) Truss to be fully sheathed from one face or securely braced against lateral movement (i.e. diagonal web).
- 4) Gable studs spaced at 1-4-0 oc.
- 5) This truss is designed in accordance with the 2015 International Residential Code sections R502.11.1 and R802.10.2 and referenced standard ANSI/ TPI 1.
- 6) Recommend 2x6 strongbacks, on edge, spaced at 10-00-00 oc and fastened to each truss with 3-10d (0.131" X 3") nails. Strongbacks to be attached to walls at their outer ends or restrained by other means.
- 7) CAUTION. Do not erect truss backwards.



This design is based upon parameters shown, and is for an individual building component to be installed and loaded vertically. Applicability of design parameters and proper incorporation of component is responsibility of the Building Designer. Building Designer shall verify all design information on this sheet for conformance with conditions and requirements of the specific building and governing codes and ordinances. Building Designer accepts responsibility for the correctness or accuracy of the design information as it may relate to a specific building. Certification is valid only when truss is fabricated by a UFPI plant. Bracing shown is for lateral support of truss members only and does not replace erection and permanent bracing. Refer to Building Component Safety Information (BCSI) for general guidance regarding storage, erection and bracing available from SBGA and Truss Plate Institute.

