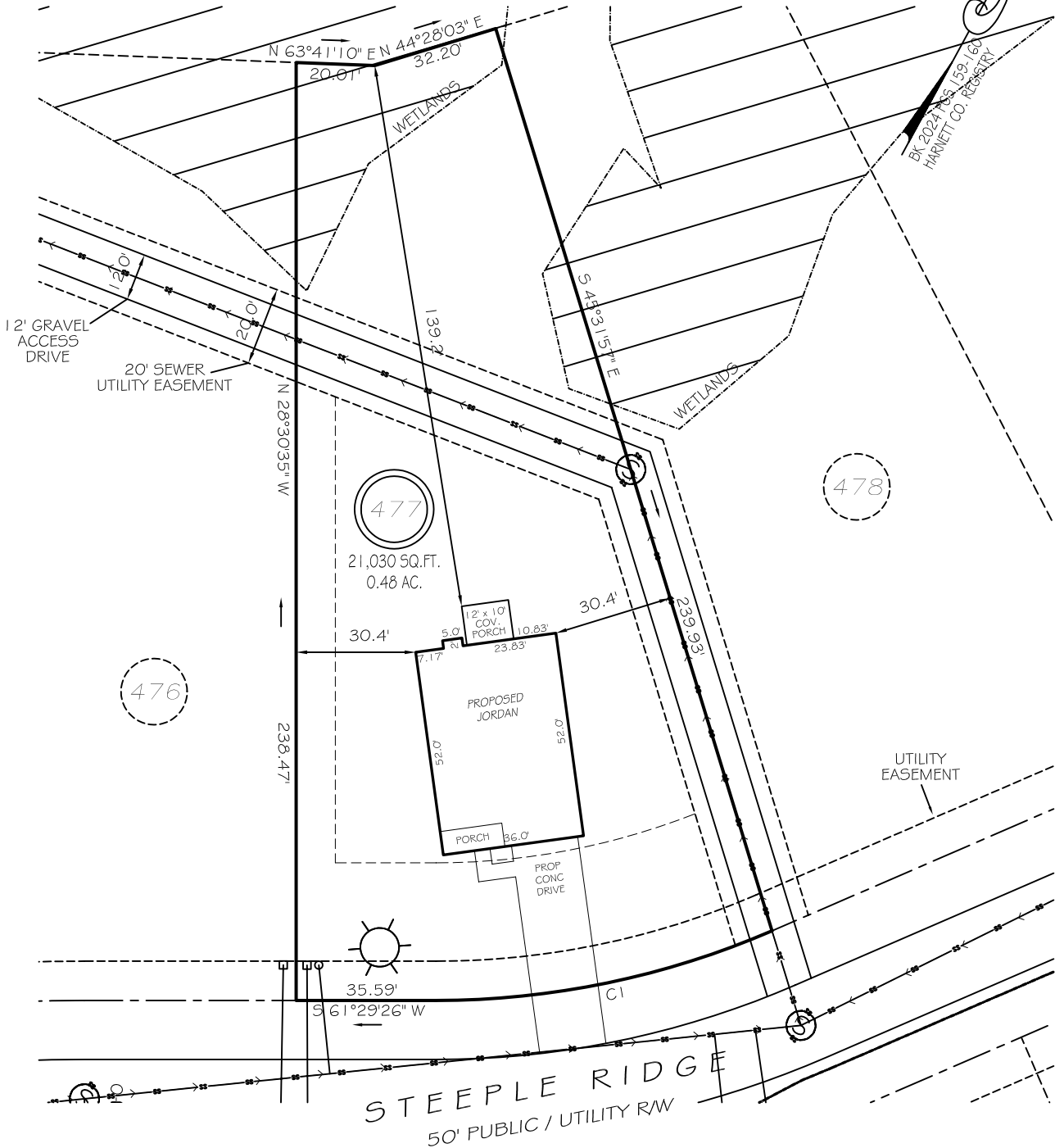
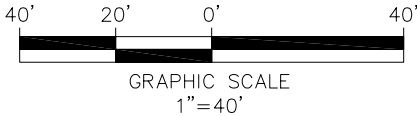


I, MICHAEL P. GRIFFIN, certify that under my direction and supervision this map was drawn from an actual field survey; that the error of closure of the survey as calculated by coordinates is 1: 10,000+; that the area shown hereon was calculated by coordinates. Dashed lines shown hereon were not surveyed. Witness my hand and seal this day of MONTH 2025.

N/F  
MANORS AT LEXINGTON PLANTATION  
HOA & C/O LITTLE AND YOUNG  
DEED BOOK 3460, PAGE 0965  
MAP BOOK 2016, PAGE 0349  
PIN 9595-62-1415.000



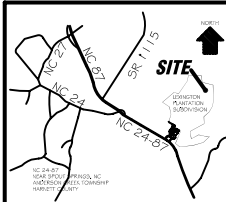
SETBACKS	
FRONT	35'
REAR	25'
SIDE (ONE SIDE)	5'
SIDE (ONE SIDE)	10'
CORNER SIDE	20'



CI R=215.00' L=87.87' N49°46'58"E 87.26'

**P R E L I M I N A R Y**  
NOT FOR RECORDATION,  
SALES OR CONVEYANCE

EIP	EXISTING IRON PIPE	FES	FLARED END SECTION
IPS	IRON PIPE SET	WM	WATER METER
R/W	RIGHT OF WAY	CO	CLEAN OUT
N/F	NOW OR FORMERLY	FH	FIRE HYDRANT
EIS	EXISTING IRON STAKE	CB	CATCH BASIN



**GRIFFIN LAND SURVEYING, INC.**

P. O. BOX 148  
FUQUAY-VARINA, NC 27526  
(919) - 567 - 1963

FIRM LIC.# C-1345

**PLOT PLAN**  
FOR

**DREAM FINDERS HOMES, LLC**

**LEXINGTON PLANTATION**

**LOT 477**

STEEPLE RIDGE

NORTH CAROLINA

HARNETT COUNTY ANDERSON CREEK TOWNSHIP

DRAWN BY **KDF**

DATE **4/22/25**

CHECKED BY **MPG**

SCALE **1" = 40'**