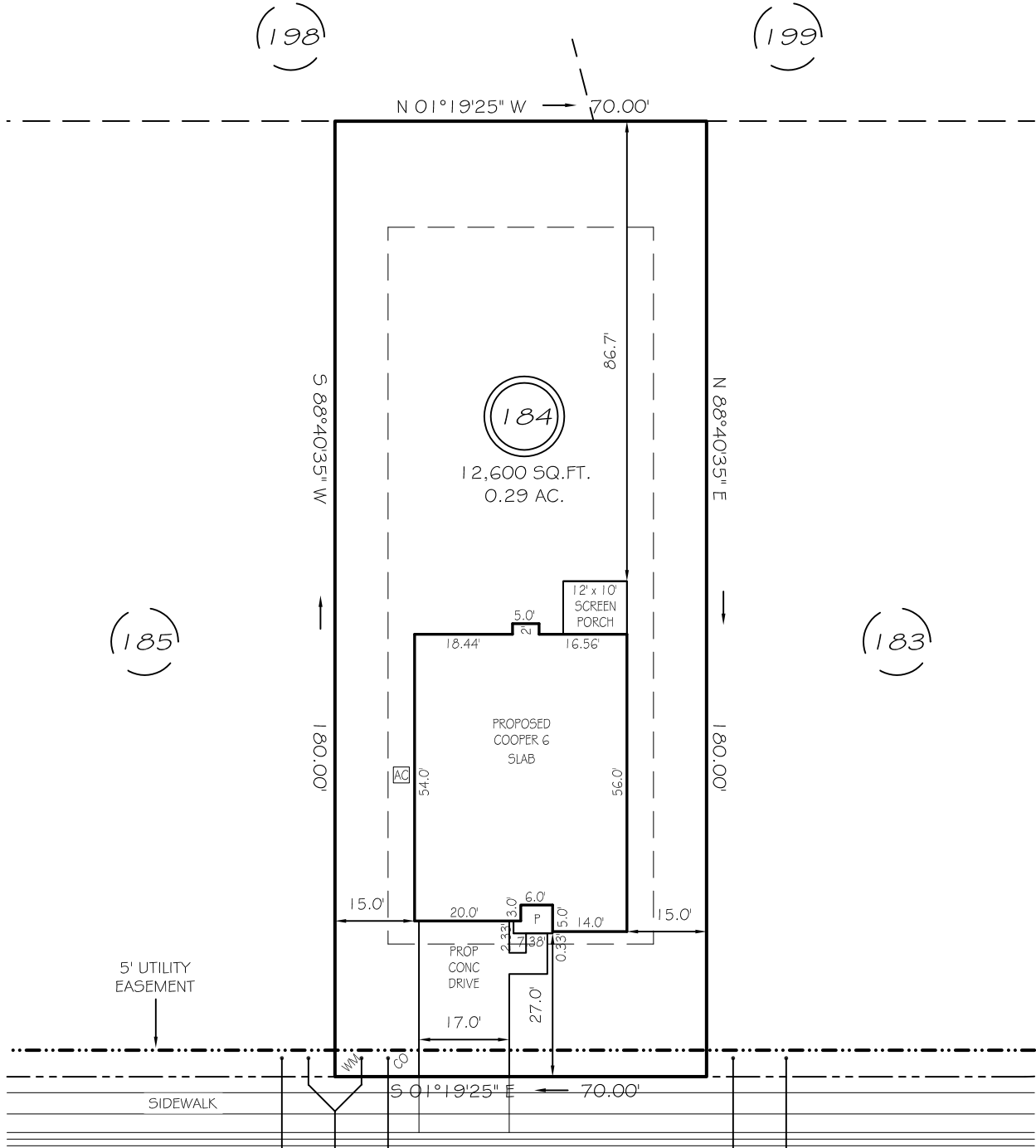


I, MICHAEL P. GRIFFIN, certify that under my direction and supervision this map was drawn from an actual field survey; that the error of closure of the survey as calculated by coordinates is 1: 10,000+; that the area shown hereon was calculated by coordinates. Dashed lines shown hereon were not surveyed.

Witness my hand and seal this day of MONTH 2025.

BK 2023 PGS 658-660
HARNETT CO. REGISTRY



APPLESEED DRIVE

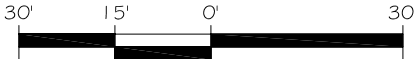
50' PUBLIC RW & UTILITY ACCESS

IMPERVIOUS AREAS

HOUSE	2335 SQ. FT.
DRIVE & WALKS	542 SQ. FT.
A/C PAD	9 SQ. FT.
TOTAL	2886 SQ. FT.
ALLOWED	3800 SQ. FT.

SETBACKS

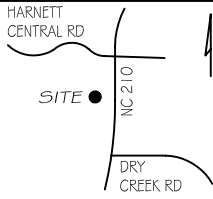
FRONT	25'
REAR	20'
SIDE	10'
CORNER SIDE	20'



GRAPHIC SCALE
1"=30'

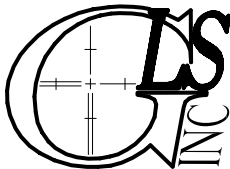
LEGEND

EIP	EXISTING IRON PIPE	FES	FLARED END SECTION
IPS	IRON PIPE SET	WM	WATER METER
R/W	RIGHT OF WAY	CO	CLEAN OUT
N/F	NOW OR FORMERLY	FH	FIRE HYDRANT
EIS	EXISTING IRON STAKE	CB	CATCH BASIN



PRELIMINARY

NOT FOR RECORDATION,
SALES OR CONVEYANCE



GRIFFIN LAND SURVEYING, INC.

P. O. BOX 148
FUQUAY-VARINA, NC 27526
(919) - 567 - 1963

FIRM LIC.# C-1345

PLOT PLAN
FOR
DRB HOMES

THE FARM AT
NEILLS CREEK
LOT 184

102 APPLESEED DRIVE
NORTH CAROLINA

HARNETT COUNTY NEILL'S CREEK TWSHP

DRAWN BY KDF

DATE 3/28/25

CHECKED BY MPG

SCALE 1" = 30'